

PUBLIC BUILDING COMMISSION OF CHICAGO

# CDOT Works Progress Administration Street Reconstruction

**West 114th Street - South Rockwell Street to  
South Western Avenue**

**Thursday, September 11, 2025 | 6:00PM  
Kennedy Park | 11320 S Western Ave**

Mayor Brandon Johnson | Chairman | Public Building Commission of Chicago  
Ray Giderof | Executive Director | Public Building Commission of Chicago  
Craig Turner | Acting Commissioner | Chicago Department of Transportation  
Anne Zhang, P.E. | Deputy Commissioner of Engineering | Chicago Department of Transportation

# .00 Introduction

- Ward 19: Alderman Matt O'Shea
- Chicago Department of Transportation
- Public Building Commission of Chicago
- Engineer of Record: Peralte-Clark
- Contractor: MQ Construction Company



# .01 Agenda

1. Agenda
2. Project Location & Overview
3. Anticipated Sequence of Work
4. Anticipated Project Schedule
5. Project Surroundings
6. Contractor's Proposed Phasing & Logistics
7. Contractor's Routing + Delivery + Staging
8. Critical Coordination Elements
9. Community Hiring Opportunities
10. PBC Alerts
11. Questions

# .02 Project Location & Overview

## Location:

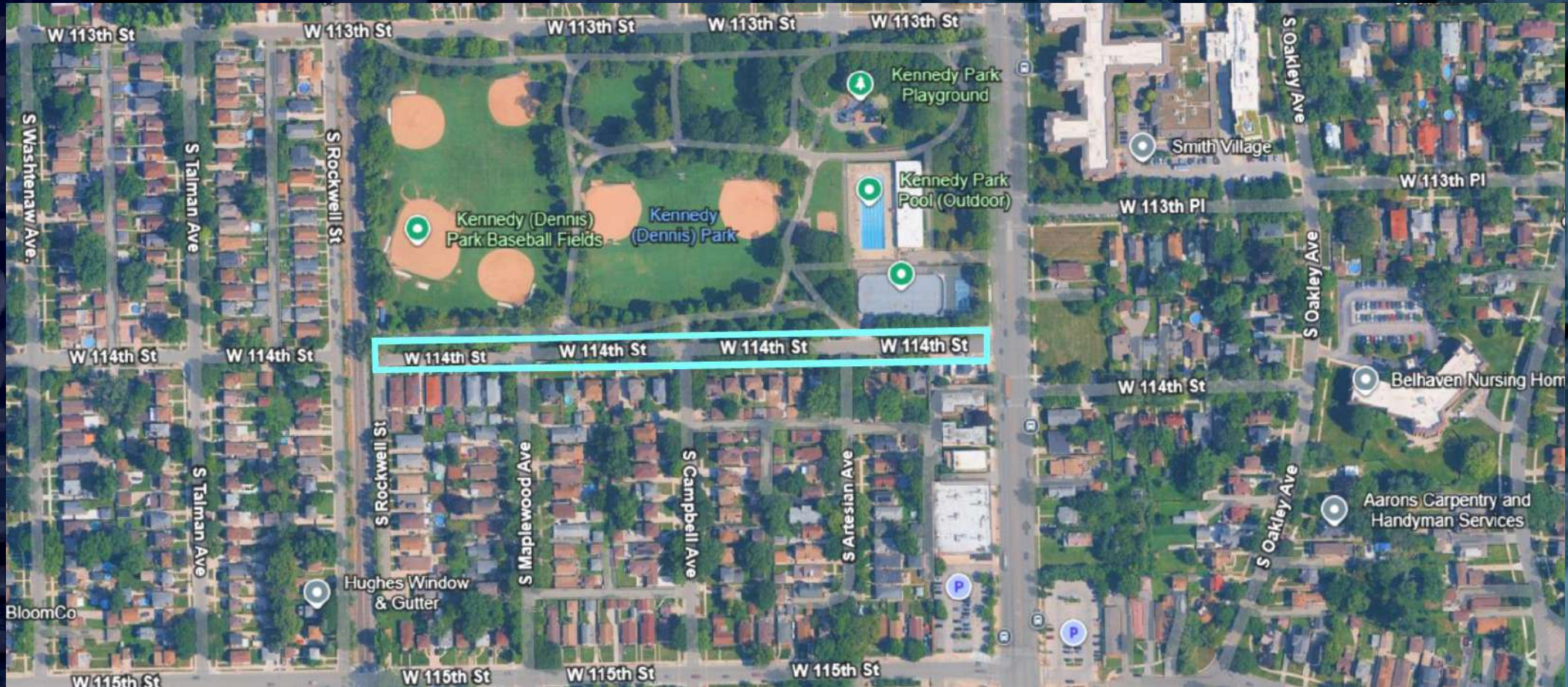
- West 114th Street - South Rockwell Street to South Western Avenue

## Scope Overview:

- This project consists of a Works Progress Administration (“WPA”) street reconstruction including full-depth pavement reconstruction.
- Work includes but isn’t limited to excavation, portland cement concrete base course, hot-mix asphalt surface course, sewer main and drainage structures, water main, concrete curbs and gutters, concrete sidewalks, tactile/detectable warning surface system for curb ramps, concrete driveways and alleys, lighting, thermoplastic pavement marking, signs, topsoil, sodding, and tree removal & planting.

# .02 Project Location & Overview

West 114th Street - South Rockwell Street to South Western Avenue



# .02 Project Location & Overview

West 114th Street - South Rockwell Street to South Western Avenue

Existing Conditions



2553 W 114<sup>th</sup> St  
(View Looking East)



2717 W 114<sup>th</sup> St  
(View Looking East)



2447 W 114<sup>th</sup> St  
(View Looking East)

## Objectives

- Install curbs and gutters
- Complete street restoration
- Install proper alley & driveway aprons
- Install speed bumps
- Address improper water drainage within the public right of way

# .03 Anticipated Sequence of Work

West 114th Street - South Rockwell Street to South Western Avenue

- Traffic Control (set-up)
- Sewer Catch basin installation (2)
- Subbase Preparation for Street Reconstruction
- Curb and Gutter Construction
- Pavement Construction
- Sidewalk Removal and Replacement
- Parkway Landscaping
- Hot-Mix Asphalt (HMA) Restoration
- Street Lighting & Pole Installation
- Pavement Marking
- Street Signage
- Site Cleanup
- Project Completion & Demobilization

# .04 Anticipated Schedule\*

West 114th Street - South Rockwell Street to South Western Avenue

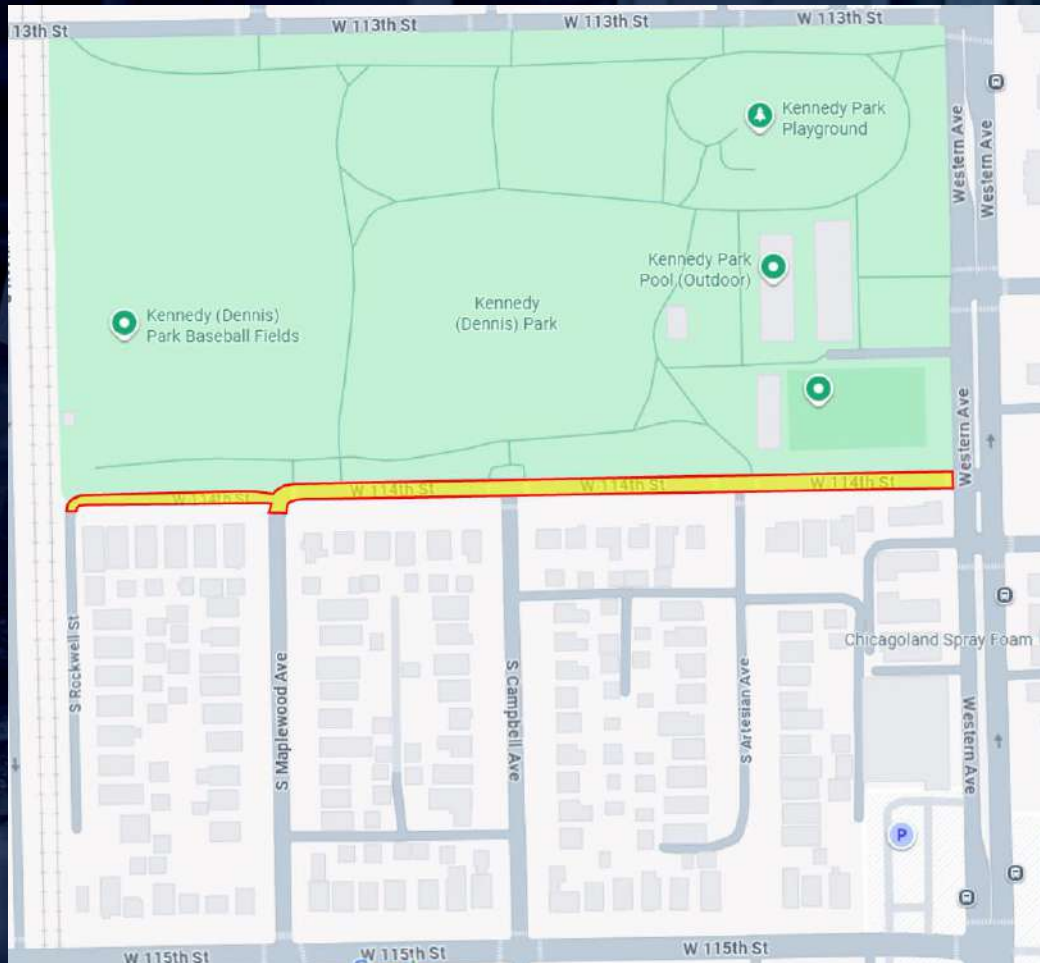
- Notice of Award: July 8, 2025
- Notice to Proceed: July 24, 2025
- Construction Flyer & Notices: August 2025
- Pre-Construction (Phased): August 2025 - September 2025
- Mobilization & Site Control: September 2025 - October 2025
- Street Reconstruction: September 2025 - November 2025
- New Landscaping (Tree Planting): October 2025 - November 2025
- Clean-up & Demobilization: November 2025
- Project Completion: November 2025

\*Dates & Durations are subject to change & weather dependent

# .05 Project Surroundings

West 114th Street - South Rockwell Street to South Western Avenue

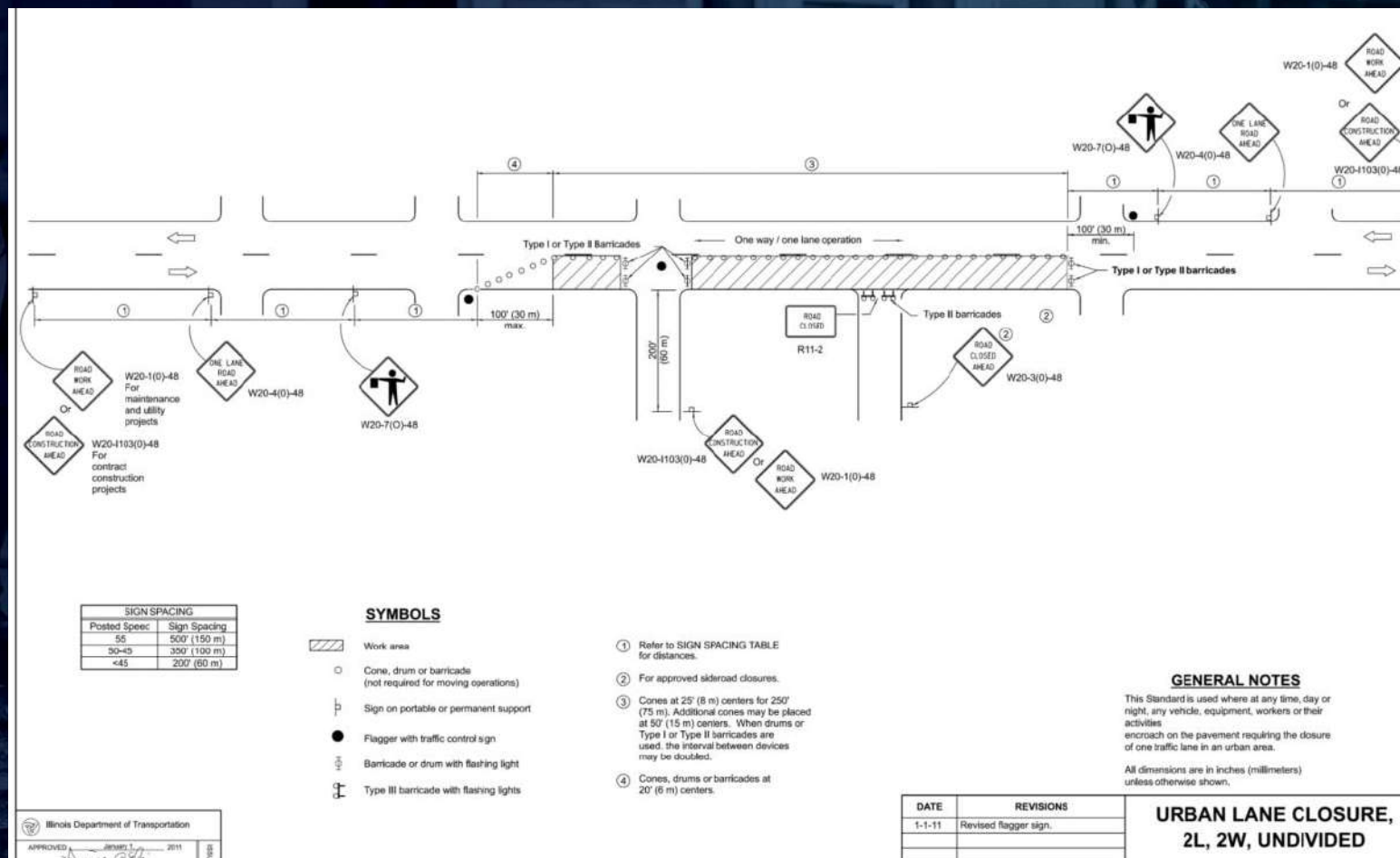
September 2025 - November 2025



- Various Residences
- Kennedy Park
  - Park will remain accessible
  - Parking at 114<sup>th</sup> will be restricted throughout the duration of the project.

# .06 Contractor's Proposed Phasing & Logistics

## General Lane Closure Logistics



### SYMBOLS

- Work area
- Sign on portable or permanent support
- Barricade or chain
- Cone, drum or barricade
- Type II barricade
- Detectable pedestrian channeling barricade

#### SIDEWALK DIVERSION

① W20-1102(45)-48 for contract construction projects

Or

① W20-102-48 for maintenance and utility projects

#### SIDEWALK CLOSURE

① W20-1102(45)-48 for contract construction projects

Or

① W20-102-48 for maintenance and utility projects

#### GENERAL NOTES

This Standard is used where, at any time, pedestrian traffic must be rerouted due to work being performed.

This Standard must be used in conjunction with other Traffic Control & Protection Standards when roadway traffic is affected.

Temporary facilities shall be detectable and accessible.

The temporary pedestrian facilities shall be provided on the same side of the closed facilities whenever possible.

The SIDEWALK CLOSED / USE OTHER SIDE sign shall be placed at the nearest crosswalk or intersection to each end of the closure. Where the closure occurs at a corner, the signs shall be erected on the corner across the street from the closure. The SIDEWALK CLOSED signs shall be used at the ends of the actual closures.

Type II barricades and R11-2-4330 signs shall be positioned as shown in "CROSSWALK CLOSED TO ALL TRAFFIC" detail in Standard 701801.

All dimensions are in inches (millimeters) unless otherwise shown.

### REVISIONS

DATE	REVISIONS
4-1-16	Omitted orange safety fence from standard as this is covered in the standard sign.
1-1-12	Added SIDEWALK DIVERSION. Modified appearance of plan views.

### SIDEWALK, CORNER OR CROSSWALK CLOSURE

STANDARD 701801-06

(Sheet 1 of 2)

### REVISIONS

DATE	REVISIONS
4-1-16	Omitted orange safety fence from standard as this is covered in the standard sign.
1-1-12	Added SIDEWALK DIVERSION. Modified appearance of plan views.

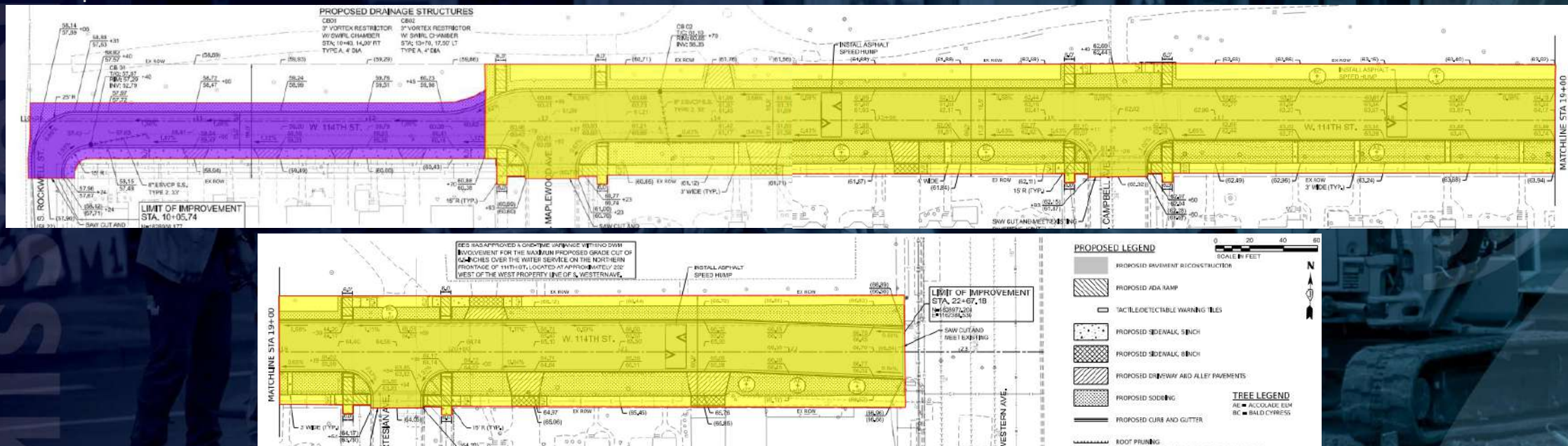
### CORNER CLOSURE

### CROSSWALK CLOSURE

# .06 Contractor's Proposed Phasing & Logistics

West 114th Street - South Rockwell Street to South Western Avenue

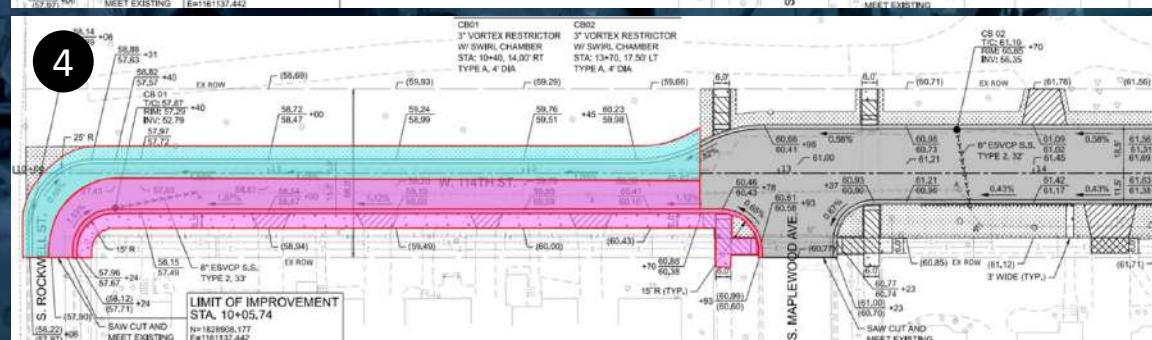
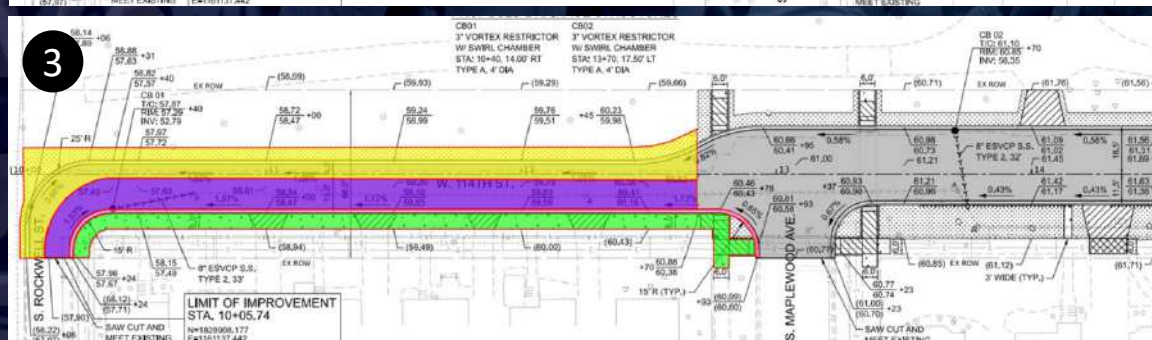
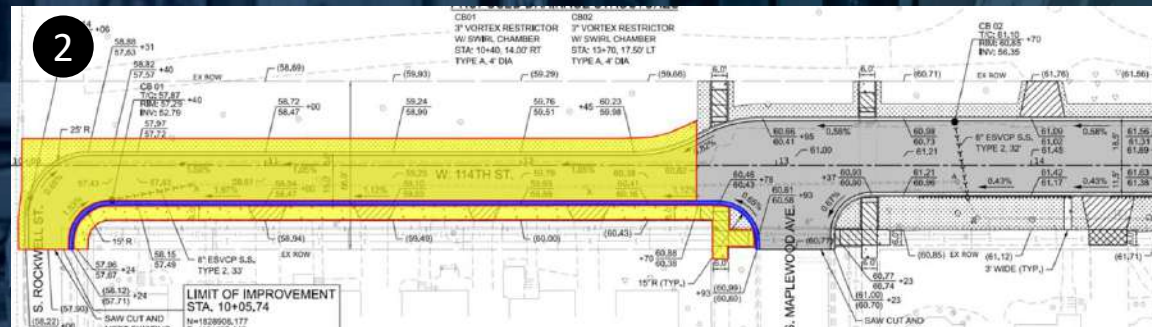
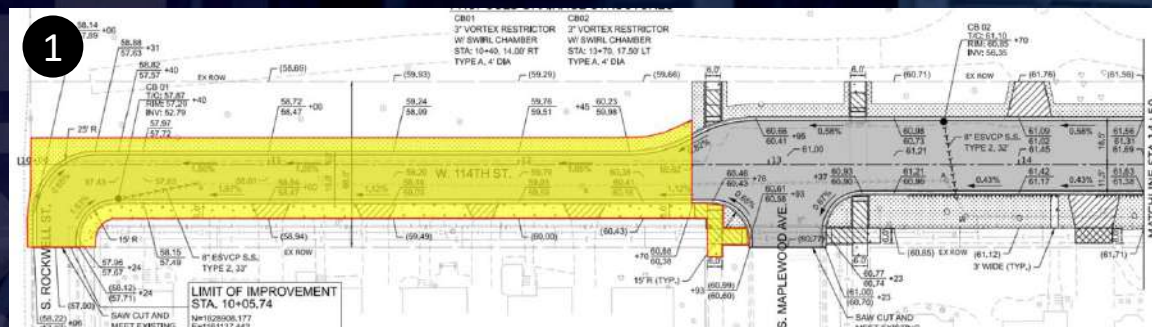
September 2025 - November 2025



- **Yellow Shading:** Continuously active work area. Will remain accessible open for local traffic.
- **Purple Shading:** Prioritized work area intended to maintain ingress/egress for local residential traffic.
- Working days & hours; 6a-7p (M-F); 8a-5p (Saturdays) as necessary; 9a-5p (Sundays).
- No residential parking will be permitted within the work area, but adjacent streets will not be impacted.
- When work is performed in the intersections, flaggers will be used to safely maintain traffic.
- All construction deliveries will be received and unloaded within the continuously active work area.
- All construction equipment staging will occur within the continuously active work area.

# .06 Contractor's Proposed Phasing & Logistics

West 114th Street - South Rockwell Street to South Western Avenue  
Rockwell to Maplewood Acceleration (Mid-Sept to Mid-Oct)



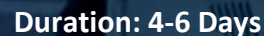
- **Yellow Shading:** Area will be fully demolished then filled and graded with stone aggregate on day 1. Yellow shaded areas will remain as a passable aggregate surface during subsequent construction phases unless shading is removed.
- **Blue Shading:** Curb & Gutter will be installed. Driveway access will be restricted.
- **Green Shading:** New sidewalk & driveways will be poured. Driveway access will be restricted.
- **Purple Shading:** South half of base course will be poured. Driveway access will be restricted.
- **Cyan Shading:** North half of base course will be poured.
- **Pink Shading:** Area completed in a previous stage & passable during this stage.

West 114th Street - South Rockwell Street to South Western Avenue  
Rockwell to Maplewood Acceleration (Mid-Sept to Mid-Oct)



- **Yellow Shading:** Area will be fully demolished then filled and graded with stone aggregate on day 1. Yellow shaded areas will remain as a passable aggregate surface during subsequent construction phase.

West 114th Street - South Rockwell Street to South Western Avenue  
Rockwell to Maplewood Acceleration (Mid-Sept to Mid-Oct)

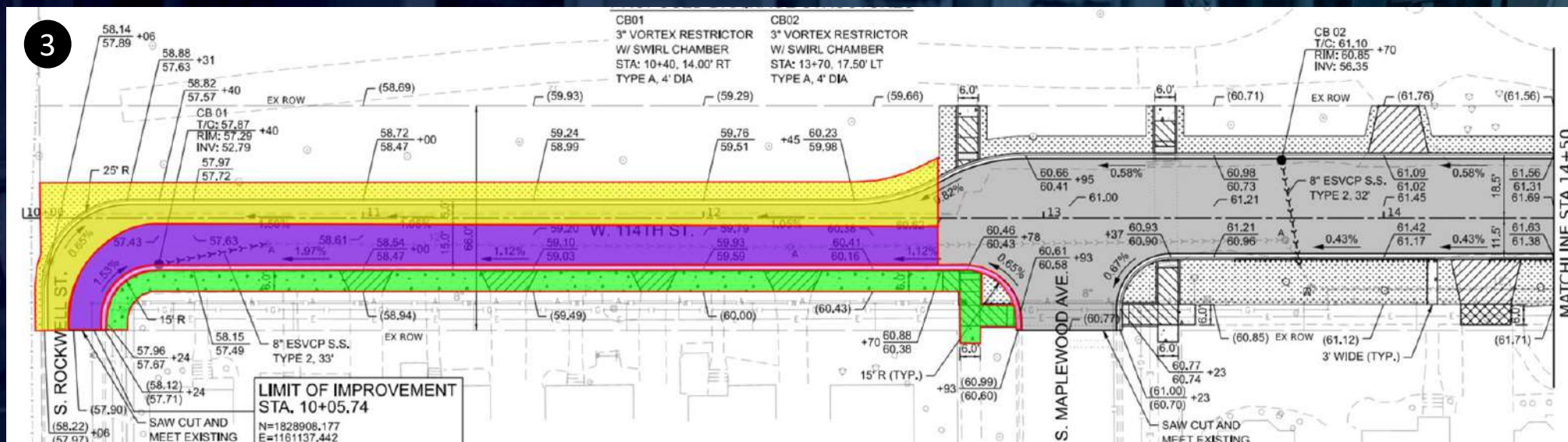


- **Yellow Shading:** Area will be fully demolished then filled and graded with stone aggregate on day 1. Yellow shaded areas will remain as a passable aggregate surface during subsequent construction phases.
- **Blue Shading:** Curb & Gutter will be installed. Driveway access will be restricted.

## .06 Contractor's Proposed Phasing & Logistics

## West 114th Street - South Rockwell Street to South Western Avenue

## Rockwell to Maplewood Acceleration (Mid-Sept to Mid-Oct)



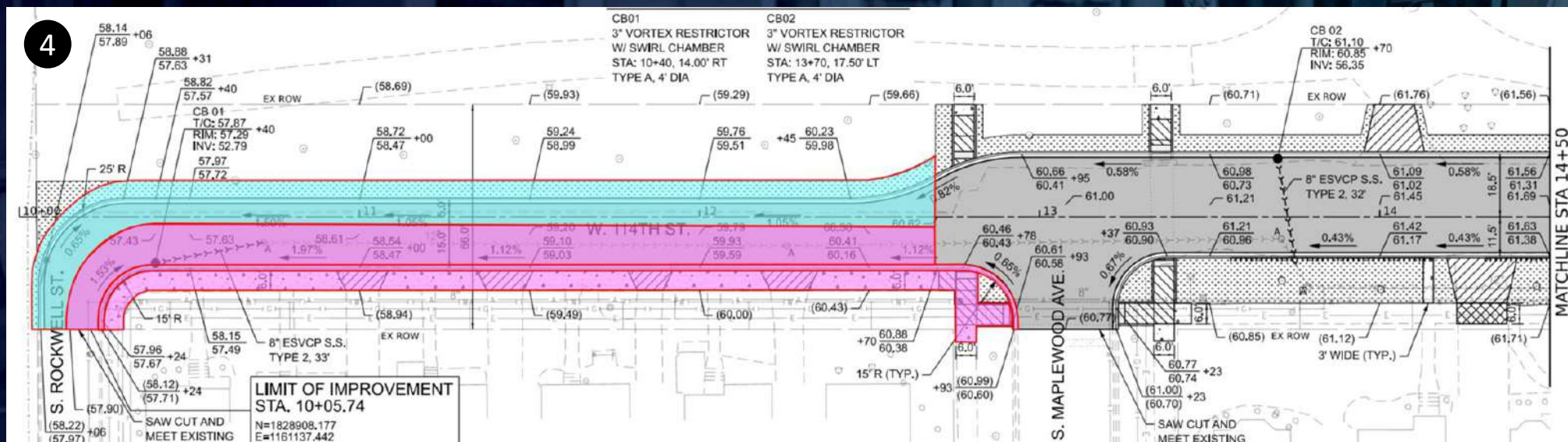
**Duration: 5-7 Days**

- **Yellow Shading:** Area will be fully demolished then filled and graded with stone aggregate on day 1. Yellow shaded areas will remain as a passable aggregate surface during subsequent construction phases.
- **Green Shading:** New sidewalk & driveways will be poured. Driveway access will be restricted.
- **Purple Shading:** South half of base course will be poured. Driveway access will be restricted.
- **Pink Shading:** Area completed in a previous stage & passable during this stage

## .06 Contractor's Proposed Phasing & Logistics

## West 114th Street - South Rockwell Street to South Western Avenue

## Rockwell to Maplewood Acceleration (Mid-Sept to Mid-Oct)

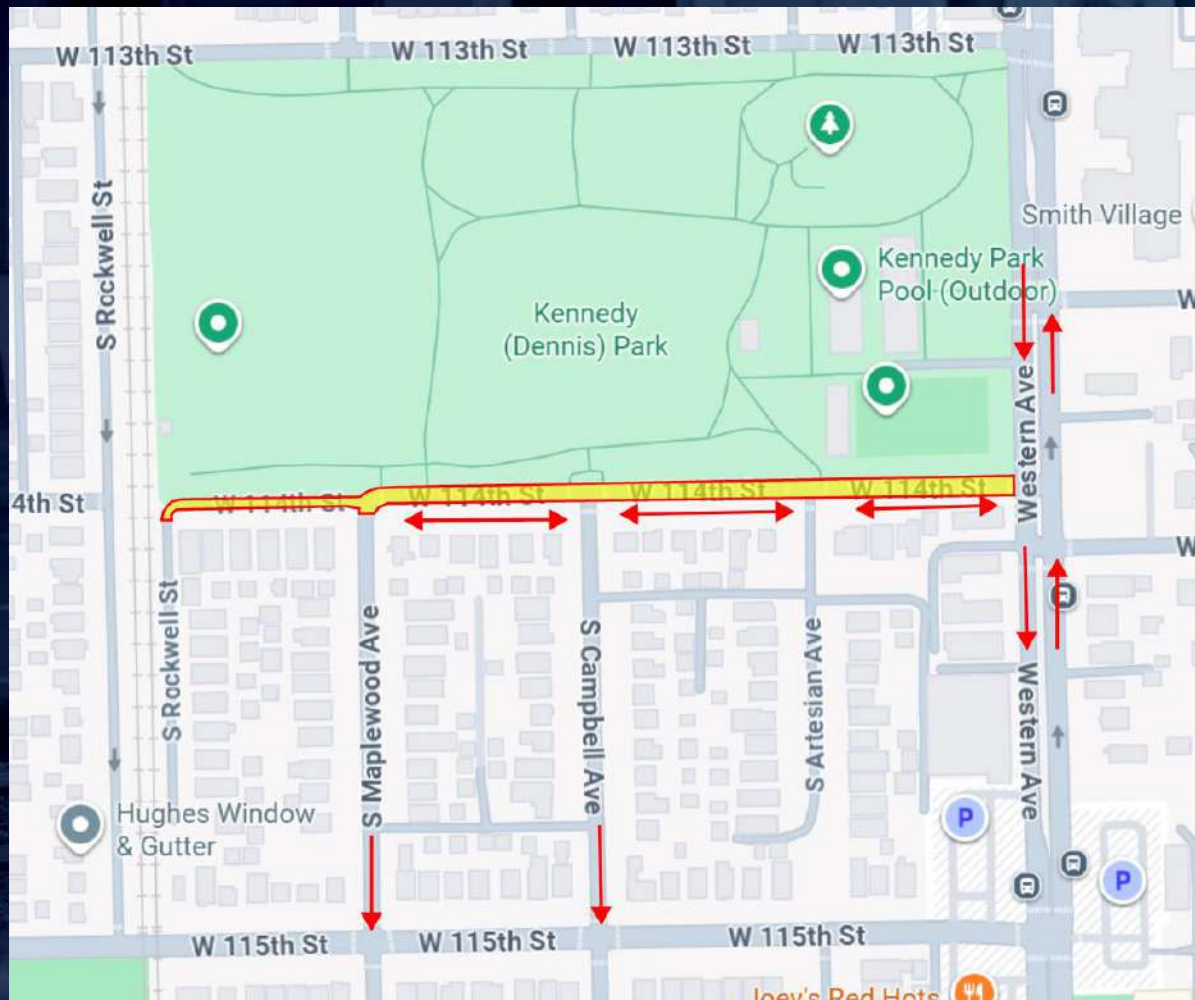


**Duration: 5-7 Days**

- **Cyan Shading:** North half of base course will be poured.
- **Pink Shading:** Area completed in a previous stage & passable during this stage.
- **Driveway access** will be restored

# .07 Contractor's Routing + Delivery + Staging

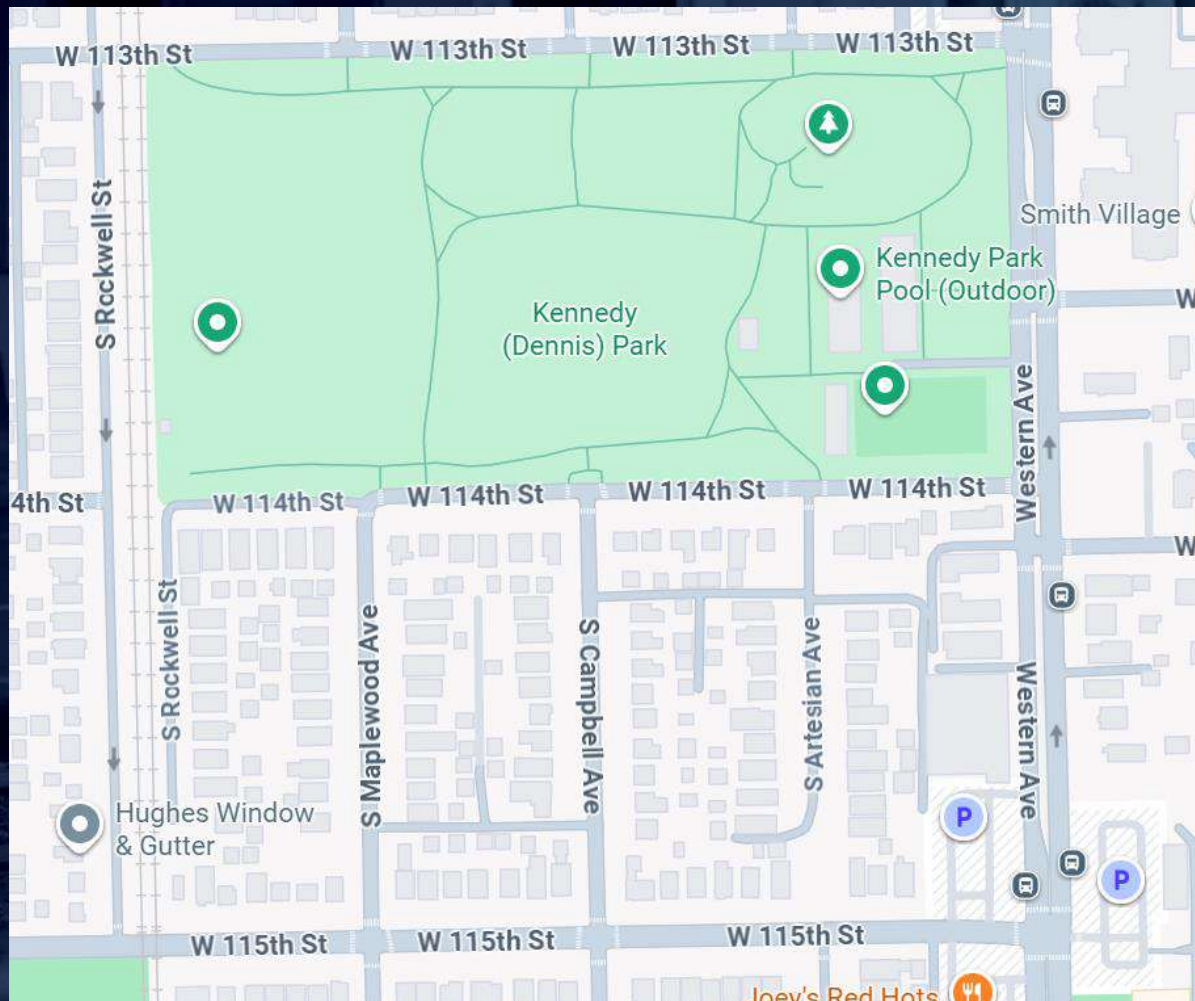
West 114th Street - South Rockwell Street to South Western Avenue



- Trucks may proceed to the construction zone and loop back towards Western via 114<sup>th</sup> as indicated by red arrows. Maplewood, or Campbell may be used for egress when necessary.
- Equipment or material staging will take place on W 114<sup>th</sup> St directly West of Western.

# .08 Critical Coordination Elements

West 114th Street - South Rockwell Street to South Western Avenue



- Chicago Park District
  - Coordination Ongoing.
- Streets & Sanitation
  - Garbage and Recycling pickup to proceed as normal.

# .08 Critical Coordination Elements

West 114th Street - South Rockwell Street to South Western Avenue

Reduced ingress & egress  
Driveway inaccessible (7-10 days)

2553 W 114<sup>th</sup>  
2549 W 114<sup>th</sup>  
2545 W 114<sup>th</sup>  
2539 W 114<sup>th</sup>  
11406 S Maplewood

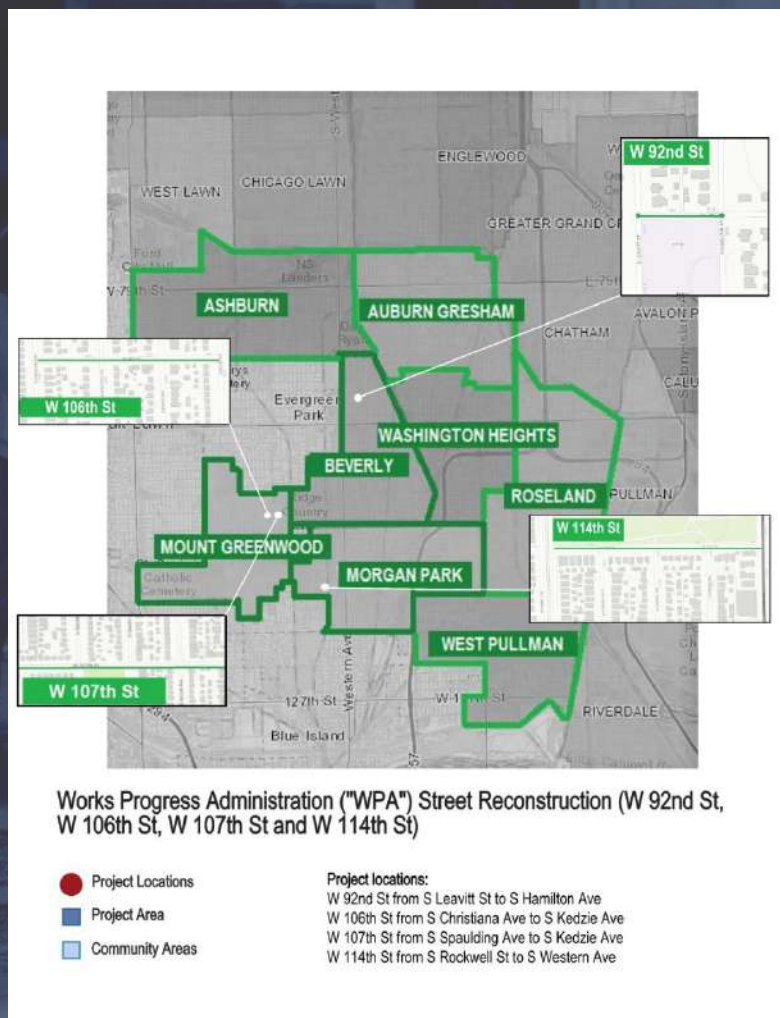
Reduced ingress & egress  
Full driveway access

11401 S Rockwell  
11415 S Rockwell  
11419 S Rockwell  
11423 S Rockwell  
11427 S Rockwell  
11431 S Rockwell  
11435 S Rockwell  
11439 S Rockwell  
11445 S Rockwell

Reduced ingress & egress  
Driveway inaccessible (8-12 days)

2517 W 114<sup>th</sup>  
2515 W 114<sup>th</sup>  
2511 W 114<sup>th</sup>  
2507 W 114<sup>th</sup>  
2425 W 114<sup>th</sup>

# .09 Community Hiring



## VIRTUAL COMMUNITY HIRING SESSION

CDOT Capital Program Alleys (Various Locations) and CDOT Works Progress Administration ("WPA") Street Reconstruction

Monday, September 22, 2025

10:00am - 2:00pm

Wednesday, September 24, 2025

10:00am - 2:00pm

These projects consist of CDOT Capital Program Alleys (Various Locations) and CDOT Works Progress Administration ("WPA") Street Reconstruction including alley reconstruction and full-depth pavement of twenty-two (22) locations.

Work includes but is not limited to a cement concrete base course, hot-mix asphalt, garage aprons, curbs and gutters, ADA curb ramps, sidewalks, alleys, driveways, brick pavers, surface course, sewer main, water main and drainage structures, sewer cleaning and televising, roadway lighting, pavement marking, signs, geotechnical fabric, hydraulic seeding, topsoil, sodding, tree removal and planting.

Scan the QR code or Follow the link to schedule an interview.

[tinyurl.com/CAWPA0922](https://tinyurl.com/CAWPA0922)



For more information please contact [compliance@pbcchicago.com](mailto:compliance@pbcchicago.com)

[www.pbcchicago.com](http://www.pbcchicago.com) | 312.744.3090

# .10 PBC Alerts

**PBC Alerts** is an email and text subscription service that alerts you of upcoming PBC procurement opportunities and activities, community hiring events, and other information and announcements.

[Subscribe here](#)



# Questions