



# ADDENDUM

**ADDENDUM NO.:** 01  
**PROJECT NAME:** WPA Street Reconstruction (W. Bryn Mawr Ave.- N. Knox Ave./ W. Bryn Mawr Ave.-N. Lawler Ave.)  
**PROJECT NO.:** 22813  
**CONTRACT NO.:** C1628  
**DATE OF ISSUE:** July 23, 2025

## NOTICE OF CHANGES, MODIFICATIONS, OR CLARIFICATIONS TO CONTRACT DOCUMENTS

The following changes, modifications, or clarifications are hereby incorporated and made an integral part of the Contract Documents. Unless clearly expressed otherwise by this Addendum, all terms and conditions defined in the original Contract Documents shall continue in full force and effect and shall have the same meaning in this Addendum. Issued Addenda represent responses/clarifications to various inquiries. Contractors shall be responsible for including all associated labor/material costs in its bid. Drawings/specifications corresponding to inquiry responses will be issued with the Issue for Construction Documents, upon issuance of building permit.

**ITEM NO. 1: CHANGE TO KEY DATES**  
None.

**ITEM NO. 2: REVISIONS TO BOOK 1 – PBC INSTRUCTIONS TO BIDDERS**  
**Change 1** Book 1 – **DELETE** Page 13 Master Bid Form and **REPLACE WITH** attached Updated Master Bid Form. **DELETE** Pages 20 - 21 Schedule of Prices – Location W. Bryn Mawr Ave. – N. Lawler Ave. and **REPLACE WITH** attached Updated Schedule of Prices. Quantities for Line Item Nos. 63, 65 and 66 have been updated.  
**NOTE:** [Updated Fillable Master Bid Form](https://www.xhodesplanroom.com/) (Excel version) is available from the Planroom: <https://www.xhodesplanroom.com/>, the [PBC Current Opportunities Page](#), as well as the PBC Alert communication.

**ITEM NO. 3: REVISIONS TO BOOK 2 – PBC STANDARD TERMS AND CONDITIONS**  
None.

**ITEM NO. 4: REVISIONS TO BOOK 3 – TECHNICAL SPECIFICATIONS**  
None.

**ITEM NO. 5: REVISIONS TO DRAWINGS**  
**Change 1** **REVISED** Drawing Sheet No. 3 – GENERAL NOTES, SUMMARY OF QUANTITIES  
a. Item No. 63 – CONDUIT IN TRENCH, PVC (SCHEDULE 80), 2" DIA.  
i. Quantity decreased by 80 LN FT (from 1771 LN FT to 1691 LN FT)  
b. Item No. 65 – CONDUIT, DIRECTIONAL BORED, COILABLE NONMETALLIC CONDUIT, (SCHEDULE 80), 2" DIA.  
i. Quantity increased by 80 LN FT (from 0 LN FT to 80 LN FT)  
c. Item No. 66 – TRENCH AND BACKFILL WITH SCREENINGS  
i. Quantity decreased by 80 LN FT (from 1771 LN FT to 1691 LN FT)  
**Change 2** **REVISED** Drawing Sheet No. 14 FOUNDATION AND CONDUIT PLAN  
a. Identified locations for directional boring.

**ITEM NO. 6: REQUESTS FOR INFORMATION**  
None.

This Addendum includes the following attached Specifications and/or Documents:

1. Book 1 – Updated Master Bid Form and Updated Schedule of Prices
2. Note: Contractors MUST use **Updated [Updated Fillable Master Bid Form](#)** (Excel) when submitting bids. Document is available on the printer's planroom, the PBC Current Opportunities Page of our website, and the PBC Alert communication as noted in Item No. 2. Change I above.

This Addendum includes the following attached Drawings:

1. Updated Drawing No. 3 – GENERAL NOTES, SUMMARY OF QUANTITIES, dated July 23, 2025.
2. Updated Drawing No. 14 – FOUNDATION AND CONDUIT PLAN, dated July 23, 2025

**END OF ADDENDUM NO. 01**

**B. BID FORM - WPA STREET RECONSTRUCTION (W. Bryn Mawr Ave.-N. Knox Ave./W. Bryn Mawr Ave.-N. Lawler Ave.)**

<b>PROJECT NAME:</b>	<b>Chicago Department of Transportation Works Progress Administration ("WPA") Street Reconstruction</b>
<b>LOCATION:</b>	<b>W. Bryn Mawr Ave. - N. Knox Ave./W. Bryn Mawr Ave. - N Lawler Ave.</b>
<b>CONTRACT NO:</b>	<b>C1628</b>
<b>PROJECT NO(S):</b>	<b>22813</b>
<b>FIRM NAME:</b>	

**BID FORM**

Bidders MUST use the Excel File available to bidders from the Cross Rhodes Planroom (<https://www.x-rhodesplanroom.com/>) or the PBC Website (<https://pbchicago.com/opportunities/cdotwpa/wbrynmawrnknoxandwbrynmawrnlawler/>) to ensure accurate calculations for the Total Base Bid and Total Award Criteria.  
Please follow instructions on the Bid Form (below) for Electronic Submission.

LINE	DESCRIPTION	AMOUNT
<b>W. Bryn Mawr Ave. - North Knox Ave.</b>		
1	Base Work Only	\$ -
2	Commission's Contract Contingency	\$ 225,000.00
3	Sitework Allowance	\$ 25,000.00
4	Brick Paver Allowance	\$ 5,000.00
5	<b>TOTAL BASE BID</b>	\$ <b>255,000.00</b>
Accepted by the Commission <input type="checkbox"/>		
LINE	DESCRIPTION	AMOUNT
<b>W. Bryn Mawr Ave. - North Lawler Ave.</b>		
6	Base Work Only	\$ -
7	Commission's Contract Contingency	\$ 305,000.00
8	Sitework Allowance	\$ 25,000.00
9	<b>TOTAL BASE BID</b>	\$ <b>330,000.00</b>
Accepted by the Commission <input type="checkbox"/>		
LINE	DESCRIPTION	TOTAL AMOUNTS
10	<b>GRAND TOTAL BASE BID - ALL STREETS (Total of Lines 5 and 9)</b>	\$ <b>585,000.00</b>
11	<b>GRAND TOTAL AWARD CRITERIA FIGURE - ALL STREETS</b>	\$ <b>585,000.00</b>

**SURETY INFORMATION**  
(Provide Legal Name and address of Surety)

Name: \_\_\_\_\_

Address: \_\_\_\_\_

**BIDDER'S INFORMATION**

Firm Name: \_\_\_\_\_

Date: \_\_\_\_\_

**NOTES/INSTRUCTIONS**

- Prior to submitting your bid electronically, please do the following:
1. Ensure BOTH of the TWO (2) Schedule of Prices Worksheets are Complete.
  2. Ensure Award Criteria Worksheet is Complete.
  3. Ensure Surety Information section, and Bidder's Information section have been populated.
  4. Save the file.
  5. Convert the file to PDF.
  6. Include copy of the Bid Form and Schedule of Prices within the scanned copy of the bid.
  7. Attach the PDF version AND the Excel file, along with the scanned copy of the bid.
  8. Send email to: [dee.taylor@cityofchicago.org](mailto:dee.taylor@cityofchicago.org) and [pbcc-procurement@cityofchicago.org](mailto:pbcc-procurement@cityofchicago.org)

Light Gray	Base Work Only	Base Work Only automatically populates from each Schedule of Prices Worksheet (Line 89)
Light Blue	Contingency(ies)	Amount is fixed and will automatically calculate to determine Total Base Bid (Total of all Streets)
Light Yellow	Allowance(s)	Amount is fixed and will automatically calculate to determine Total Base Bid (Total of All Streets)
Maroon	Grand Total Base Bid	Equals Total of Lines 5 and 9. Grand Total Base Bid automatically populates.
Blue	Grand Total Award Criteria Figure	Based on Line 10 (Grand Total Base Bid figure). Grand Total Award Criteria Figure (Line 11) automatically populates from Award Criteria Figure Worksheet.

**SCHEDULE OF PRICES**  
**CHICAGO DEPARTMENT OF TRANSPORTATION WORKS PROGRESS ADMINISTRATION ("WPA") STREET RECONSTRUCTION**  
**LOCATION: W. Bryn Mawr Avenue-N. Lawler Avenue (from N. Lawler Avenue-N. LaPorte Avenue to Edens Parkway)**  
**CDOT PROJECT NO.: B-5-253 PBC PROJECT NO.: 22813**  
**PBC CONTRACT: C1628**

Bidder's pricing for each line item should carry its share of the costs of work, plus its share of overhead and profit. Bidders should avoid nominal pricing for some lines and enhanced pricing for other lines.  
 Bids that the PBC considers to be materially unbalanced will be rejected.

Line	Code Number	Description	Unit	Estimated Quantity	Unit Price	Cost
1	20200100	EARTH EXCAVATION	CU YD	1289	\$	-
2	20101100C	TREE PROTECTION	EACH	18	\$	-
3	20800150	TRENCH BACKFILL	CU YD	87	\$	-
4	21101615	TOPSOIL FURNISH AND PLACE, 4"	SQ YD	1899	\$	-
5	25200110	SODDING, SALT TOLERANT	SQ YD	1832	\$	-
6	*****	TREE PLANTING, 2-1/2 INCH TO 3-INCH B&B	EACH	18	\$	-
7	251K0100C	SHREDDED HARDWOOD BARK MULCH	SQ YD	68	\$	-
8	28000510	INLET FILTERS	EACH	4	\$	-
9	CDOT3110010	SAND CUSHION, VARIABLE DEPTH	CU YD	59	\$	-
10	31101400	SUB-BASE GRANULAR MATERIAL, TYPE B, 6"	SQ YD	2940	\$	-
11	35300200	PORTLAND CEMENT CONCRETE BASE COURSE, 7"	SQ YD	2380	\$	-
12	40600290	BITUMINOUS MATERIALS (TACK COAT)	POUND	1071	\$	-
13	40600525	LEVELING BINDER (HAND METHOD), N50	TON	2	\$	-
14	40600635	LEVELING BINDER (MACHINE METHOD), N50	TON	200	\$	-
15	40604060	HOT-MIX ASPHALT SURFACE COURSE, IL-9.5, MIX "D", N50	TON	267	\$	-
16	42000300	PORTLAND CEMENT CONCRETE PAVEMENT 8"	SQ YD	73	\$	-
17	42300400	PORTLAND CEMENT CONCRETE DRIVEWAY PAVEMENT, 8"	SQ YD	63	\$	-
18	42400200C	PORTLAND CEMENT CONCRETE SIDEWALK, 5-INCH	SQ FT	3694	\$	-
19	42400210C	PORTLAND CEMENT CONCRETE ADA CURB RAMP, 5-INCH	SQ FT	1094	\$	-
20	42400800C	LINEAR DETECTABLE WARNING TILES (CAST IRON)	SQ FT	108	\$	-
21	44000100C	PAVEMENT REMOVAL	SQ YD	2610	\$	-
22	44000500	COMBINATION CURB AND GUTTER REMOVAL	FOOT	497	\$	-
23	44000600	SIDEWALK REMOVAL	SQ FT	1072	\$	-
24	442Z0200C	SAW CUTTING PAVEMENT	FOOT	81	\$	-
25	550Z0108C	STORM SEWER, EXTRA STRENGTH VITRIFIED CLAY PIPE, TYPE 2, 8 INCH	FOOT	24	\$	-
26	550Z0112C	STORM SEWER, EXTRA STRENGTH VITRIFIED CLAY PIPE, TYPE 2, 12 INCH	FOOT	303	\$	-
27	551Z0400C	SEWER CLEANING AND TELEVISION	FOOT	2,534	\$	-
28	60200105C	CATCH BASINS, TYPE A, 4-FOOT DIAMETER, TYPE 1 FRAME, OPEN LID (CITY OF CHICAGO)	EACH	4	\$	-
29	*****	MANHOLES, TYPE B, 4'-DIAMETER, FRAME AND OPEN LID (CITY OF CHICAGO)	EACH	2	\$	-
30	602Z0700C	ADDITIONAL MASONRY	VERT FT	2	\$	-
31	60250200C	CATCH BASINS TO BE ADJUSTED	EACH	1	\$	-
32	60255500C	MANHOLES TO BE ADJUSTED	EACH	1	\$	-
33	60500050C	REMOVING CATCH BASINS	EACH	3	\$	-
34	606Z0100C	COMBINATION CONCRETE CURB AND GUTTER, TYPE B-V.12	FOOT	1687	\$	-
35	606006050C	CONCRETE CURB, TYPE B	FOOT	23	\$	-
36	670Z0100C	ENGINEER'S FIELD OFFICE	CAL MONTH	6	\$	-
37	701Z0300C	TRAFFIC CONTROL COMPLETE	L SUM	1	\$	-
38	701Z0800C	AGGREGATE FOR TEMPORARY ACCESS	TON	193	\$	-
39	720Z0300C	CONSTRUCTION SIGN	EACH	2	\$	-
40	724Z0100C	REMOVE AND SALVAGE SIGN PANEL	EACH	2	\$	-
41	724Z0110C	REMOVE AND SALVAGE SIGN PANEL AND POST ASSEMBLY	EACH	0	\$	-
42	729Z0110C	SIGN SUPPORT POST, DIG METHOD	EACH	5	\$	-
43	729Z0120C	SIGN SUPPORT POST, DRILL METHOD	EACH	0	\$	-
44	78000400	THERMOPLASTIC PAVEMENT MARKING-LINE 6"	FOOT	95	\$	-
45	78000650	THERMOPLASTIC PAVEMENT MARKING-LINE 24"	FOOT	16	\$	-
46	X2600009	SIGN PANEL, TYPE 1, RETROREFLECTIVE, TYPE A - DOUBLE-SIDED	SQ FT	2	\$	-
47	X2600010	SIGN PANEL, TYPE 1, RETROREFLECTIVE, TYPE A - SINGLE-SIDED	SQ FT	5	\$	-
48	999X1000C	PROTECTIVE COAT	SQ YD	3,218	\$	-
49	999X0900C	DRILL AND GROUT DOWEL AND TIE BARS	EACH	6	\$	-
50	*****	DRIVEWAY AND ALLEY RETURN PAVEMENT REMOVAL (SPECIAL)	SQ YD	555	\$	-
51	IDOT 56100020	DUCTILE IRON WATER MAIN TEE, 8" X 8"	EACH	1	\$	-
52	CDOT 56120200C	WATER MAIN INSALLED IN OPEN CUT, 8"	FOOT	408	\$	-
53	CDOT 56105000C	WATER VALVE, 8"	EACH	1	\$	-
54	IDOT 56109420	DUCTILE IRON WATER MAIN FITTINGS 8" 45 DEGREE BEND	EACH	9	\$	-
55	IDOT 56200300	WATER SERVICE LINE 1"	LF	84	\$	-
56	IDOT 56400700	FIRE HYDRANTS (SPECIAL - FLUSHING HYDRANT)	EACH	1	\$	-
57	CDOT 60221100C	MANHOLE, 5 FT DIAMETER, TYPE A, FRAME AND CLOSED LID (CITY OF CHICAGO)	EACH	1	\$	-
58	CDOT 561Z0603C	TRANSITION SLEEVE, 8"	EACH	3	\$	-
59	IDOT X5620030	WATER SERVICE CONNECTION 1-INCH	EACH	2	\$	-
60	*****	RESILIENT WEDGE VALVE 8"	EACH	2	\$	-
61	CDOT 565Z0700C	WATER SERVICE SHUT OFF BOX REMOVAL AND REPLACEMENT	EACH	2	\$	-
62	CDOT 208Z0200C	TRENCH BACKFILL, WATERMAIN	CY	204	\$	-
63	810Z0265C	CONDUIT IN TRENCH, PVC (SCHEDULE 80), 2" DIA.	LN FT	1691	\$	-
64	810Z0280C	CONDUIT, DIRECTIONAL BORED, COILABLE NONMETALLIC CONDUIT, SCHEDULE 80, 1 1/4" DIA.	LN FT	0	\$	-
65	810Z0285C	CONDUIT, DIRECTIONAL BORED, COILABLE NONMETALLIC CONDUIT, SCHEDULE 80, 2" DIA.	LN FT	80	\$	-

**SCHEDULE OF PRICES**

**CHICAGO DEPARTMENT OF TRANSPORTATION WORKS PROGRESS ADMINISTRATION ("WPA") STREET RECONSTRUCTION**

**LOCATION: W. Bryn Mawr Avenue-N. Lawler Avenue (from N. Lawler Avenue-N. LaPorte Avenue to Edens Parkway)**

**CDOT PROJECT NO.: B-5-253 PBC PROJECT NO.: 22813**

**PBC CONTRACT: C1628**

Bidder's pricing for each line item should carry its share of the costs of work, plus its share of overhead and profit. Bidders should avoid nominal pricing for some lines and enhanced pricing for other lines. Bids that the PBC considers to be materially unbalanced will be rejected.

Line	Code Number	Description	Unit	Estimated Quantity	Unit Price	Cost	
66	810Z0300C	TRENCH AND BACKFILL WITH SCREENINGS	LN FT	1691	\$	-	
67	811Z0210C	CONDUIT RISER ATTACHED TO POLE, 2"	EACH	1	\$	-	
68	814Z0120C	HANDHOLE, ELECTRIC, WITH 24" FRAME AND COVER	EACH	1	\$	-	
69	817Z0220C	ELECTRIC CABLE IN CONDUIT, TRIPLEX, 2-1/C NO. 6, 1-1/C NO. 8 GROUND	LN FT	1939	\$	-	
70	821Z0300C	LUMINAIRE, LED, ACORN, ARTERIAL, RESIDENTIAL	EACH	10	\$	-	
71	821Z0860C	LUMINAIRE, LED, COBRA HEAD, RESIDENTIAL	EACH	10	\$	-	
72	821Z1300C	LUMINAIRE NODE, INTERNAL	EACH	10	\$	-	
73	825Z0200C	CONTROLLER, STREET LIGHTING, POLE MOUNTED, CONSTANT POWER, 1-PHASE, 120/240V, 60A	EACH	1	\$	-	
74	83000023C	LIGHT POLE, ALUMINUM, DAVIT, 18 FT. M.H., 8 FT DAVIT ARM	EACH	10	\$	-	
75	836Z0210C	LIGHT POLE FOUNDATION, METAL, 10" BOLT CIRCLE, 8 5/8" X 5'	EACH	10	\$	-	
76	*****	CABLE ANTI-THEFT DEVICE FOR HELIX FOUNDATIONS	EACH	10	\$	-	
77	895Z0100C	REMOVE EXISTING STREET LIGHTING EQUIPMENT	EACH	7	\$	-	
78	895Z1100C	BREAKDOWN CONCRETE FOUNDATION, LIGHT POLE	EACH	7	\$	-	
79	66900530	SOIL DISPOSAL ANALYSIS	EACH	1	\$	-	
80	66901001	REGULATED SUBSTANCES PRE-CONSTRUCTION PLAN	L SUM	1	\$	-	
81	66901003	REGULATED SUBSTANCES FINAL CONSTRUCTION REPORT	L SUM	1	\$	-	
82	66901006	ON-SITE MONITORING OF REGULATED SUBSTANCES	CAL DA	15	\$	-	
83	66900200	NON-SPECIAL WASTE DISPOSAL	CU YD	1,155	\$	-	
84	599Z3900C	PLUG EXISTING SEWER	EACH	3	\$	-	
85	699Z1400C	CATCH BASIN, MANHOLES, WATER VALVES, ROUNDWAYS AND INLETS TO BE CLEANED	EACH	2	\$	-	
86	X0327989	REMOVE EXISTING BRICK PAVERS	SQ FT	0	\$	-	
87	X0540000	BRICK PAVERS	SQ FT	0	\$	-	
88	35300060	PORTLAND CEMENT CONCRETE BASE COURSE, 4"	SQ YD	0	\$	-	
89	<b>TOTAL FOR 22813/B-5-253- W. Bryn Mawr Ave.-North Lawler Ave.</b>					\$	-

**UTILITY NOTES (CONT.)**

- THE USE OF CONCRETE, FLOW FILL, OR THE LIKE IS PROHIBITED WITHIN 24 INCHES OF ALL GAS FACILITIES, NOR SHALL IT ENCASE ANY GAS FACILITY. A BUFFER OF 24" SAND IS TO BE USED BETWEEN FLOW FILL AND ALL GAS FACILITIES. A MINIMUM OF 6" FA-02 OR FM-02 SAND SHALL BE USED WHEN BACKFILLING OTHER MATERIALS AROUND ANY EXPOSED GAS FACILITY. CONTRACTOR EXPOSING GAS FACILITY IS RESPONSIBLE FOR PROVIDING THE SAND. ANY DAMAGES TO PEOPLES GAS FACILITIES SHALL BE THE RESPONSIBILITY OF THE INSTALLING UTILITY AND THEIR CONTRACTOR(S). CALL 866-556-6002 IMMEDIATELY FOR ANY DAMAGES TO THE GAS FACILITIES. VERTICAL ADJUSTMENTS REQUIRED FOR VALVE BASIN FRAMES, COVERS, GAS SHUT-OFF VALVES, ROADWAY BOXES SHALL BE COMMUNICATED TO RANDY PEREZ, PLANNING-PERMIT GROUP, RANDY.PEREZ@PEOPLESGASDELIVERY.COM, 4 WEEKS PRIOR TO THE START OF RESTORATION FOR PLANNING & SCHEDULING. ALL GAS FACILITIES ARE TO BE MAINTAINED.
- PEOPLES GAS CAST IRON AND DUCTILE IRON GAS MAINS MAY REQUIRE SUPPORT DURING CONSTRUCTION AND RELATED EXCAVATION ACTIVITIES. ANY EXPOSED JOINTS MUST BE SUPPORTED AND CAST IRON JOINTS SEALED BY GAS COMPANY PERSONNEL. CONTACT THE LOCAL PGL SHOP ENGINEERING SUPERVISOR, A MINIMUM OF 5 BUSINESS DAYS PRIOR TO EXCAVATION TO SET UP ON-SITE INSPECTION. INSPECTION BY PEOPLES GAS IS REQUIRED PRIOR TO BACKFILL. INSPECT GAS MAIN AND COATING INTEGRITY PRIOR TO BACKFILL.

**ADA NOTES**

- FOR THE LATEST CITY OF CHICAGO ADA REQUIREMENTS FOR THE PLANS GO TO WWW.CITYOFCHICAGO.ORG.

**LANDSCAPING NOTES**

- THE CONTRACTOR IS REQUIRED TO OBTAIN A PERMIT TO REMOVE, PLANT, SPRAY, OR IN ANY WAY AFFECT THE GENERAL HEALTH OR STRUCTURE OF TREES IN THE PUBLIC WAY. THIS PERMIT MAY BE OBTAINED FROM THE DEPUTY COMMISSIONER OF CITY OF CHICAGO BUREAU OF FORESTRY.
- TREES MUST BE TAGGED BY C.D.O.T. CONTACT JEFF BRINK AT (312) 744-7844.

**DEPT. OF WATER MANAGEMENT NOTES**

- THE CONTRACTOR IS RESPONSIBLE FOR THE ADEQUATE PROTECTION OF THE EXISTING SEWERS, DRAIN CONNECTIONS, SEWER STRUCTURES, AND BENCH MONUMENTS DURING CONSTRUCTION OPERATIONS, AND THE USE OF HEAVY EQUIPMENT WITHIN THE LIMITS OF THE PROJECT.
- IT IS THE RESPONSIBILITY OF THE UTILITY COMPANY/GOVERNMENT AGENCY AND ITS CONSULTANTS/CONTRACTORS TO OBTAIN THE NECESSARY BACKGROUND INFORMATION FROM THE DRAWINGS/CONTRACT PLANS AND FOR EXISTING FACILITIES PROTECTION DURING THE CONSTRUCTION STAGE. RECORDS FROM THE DEPARTMENT OF BUILDINGS, SEWER UNIT INCLUDE: EXISTING SEWERS, DRAIN CONNECTIONS, SEWER STRUCTURES, BENCH MONUMENT LOCATIONS, ORDINANCE GRADES, AGE OF SEWER, AND PIPE MATERIAL. COPIES OF SEWER RECORDS CAN BE OBTAINED ON PAYMENT TO THE DEPARTMENT OF BUILDINGS, SEWER UNIT, LOCATED AT CITY HALL, 121 N. LASALLE ST. ROOM 900, CHICAGO, IL 60602.
- A PERMIT IS REQUIRED FROM THE DEPARTMENT OF BUILDINGS, SEWER UNIT PRIOR TO THE CONSTRUCTION OF, OR REPAIRS TO, UNDERGROUND SEWERS, DRAIN CONNECTIONS, OR SEWER STRUCTURES, INCLUDING THE ADJUSTMENT OF SEWER STRUCTURES AND THE REMOVAL/REPLACEMENT OF FRAMES AND LIDS. THE PERMIT MUST BE OBTAINED BY A DRAINLAYER CURRENTLY LICENSED FROM THE DEPARTMENT OF BUILDINGS, SEWER UNIT.
- IN ORDER TO PROTECT THE CITY'S BENCH MONUMENTS, ALL BENCH MONUMENT LOCATIONS WITHIN THE LIMITS OF THE PROJECT SHOULD BE LISTED ON THE PLAN SHEETS. IF ANY BENCH MONUMENTS ARE NOT LOCATED OR IF DAMAGE TO ANY BENCH MONUMENTS IS ENCOUNTERED, PLEASE CONTACT THE DEPARTMENT OF WATER MANAGEMENT IMMEDIATELY AT (312) 747-7892 OR (312) 747-7893. THE CONTRACTOR IS RESPONSIBLE FOR THE COST OF REPLACEMENT OF ANY BENCH MONUMENT DAMAGED OR DESTROYED DURING CONSTRUCTION.
- IN THE RELOCATION OR CONSTRUCTION OF PRIVATE OR PUBLIC UTILITIES, INCLUDING PIPE UNDERDRAINS AND/OR SUBDRAINS, THE UTILITY SHOULD BE LOCATED AS FAR AWAY AS POSSIBLE FROM THE DEPARTMENT OF WATER MANAGEMENT FACILITY. A MINIMUM DISTANCE OF THE OUTSIDE DIAMETER OF THE SEWER (O.D.) PLUS 4 FEET MUST BE MAINTAINED BETWEEN THE SEWER AND THE UTILITY CENTER LINES. IF THE OUTSIDE DIAMETER/WIDTH OF UTILITY CONDUIT IS MORE THAN THE SEWER O.D., A MINIMUM OF 4 FEET HORIZONTAL CLEARANCE MUST BE OBTAINED FROM THE OUTSIDE FACE TO OUTSIDE FACE. FOUR FEET HORIZONTAL CLEARANCE IS ALSO REQUIRED FROM ALL SEWER STRUCTURES. A MINIMUM OF 10 FEET HORIZONTAL CLEARANCE AND 18 INCHES VERTICAL CLEARANCE IS DESIRABLE BETWEEN THE SEWER AND A WATER MAIN.
- MANHOLES, CATCH BASINS, AND INLETS MUST BE PROTECTED FROM THE ENTRY OF ASPHALT/DEBRIS INTO THE SEWER SYSTEM DURING CONSTRUCTION. THE CONTRACTOR WILL MARK LOCATIONS OF ALL SEWER STRUCTURES ON THE SIDEWALK BEFORE STARTING PAVEMENT REMOVAL/REPLACEMENT. ADJUSTMENT OF FRAMES AND LIDS OF SEWER STRUCTURES MUST BE COMPLETED PRIOR TO STREET RESURFACING.
- THE UTILITY COMPANY/GOVERNMENT AGENCY OR ITS REPRESENTING CONTRACTOR MUST MAINTAIN ACCESS TO THE EXISTING SEWER FACILITIES, INCLUDING SEWER STRUCTURES, AT ALL TIMES AND COORDINATE THE PROPOSED IMPROVEMENTS WITH THE DEPARTMENT OF WATER MANAGEMENT ENGINEER/INSPECTOR TO AVOID ANY INTERRUPTION OF THE SEWER FACILITIES' MAINTENANCE OR SERVICES. THE SEWER FLOW MUST BE MAINTAINED AT ALL TIMES.

- THE CONTRACTOR MUST LOCATE AND PROMPTLY AND PROPERLY CONNECT TO THE NEW SEWERS ALL LIVE HOUSE DRAINS, CATCH BASIN DRAINS, AND OTHER EXISTING LATERALS, DRAINS, AND SEWERS OF WHATEVER NATURE WHICH ARE CONNECTED TO THE EXISTING SEWERS BEING REPAIRED OR REPLACED.
- EXISTING CATCH BASIN LATERALS TO BE REUSED MUST BE RODDED AND FLUSHED IN THE PRESENCE OF THE DEPARTMENT OF WATER MANAGEMENT INSPECTOR. A NEW CONNECTION TO THE MAIN SEWER IS REQUIRED IF THE EXISTING CATCH BASIN LATERAL IS NOT APPROVED BY THE SEWER INSPECTOR.
- WHEN A SEWER STRUCTURE IS ABANDONED, ALL PIPE OPENINGS MUST BE PLUGGED, STRUCTURES FILLED WITH TRENCH BACKFILL, LIDS AND FRAMES REMOVED, AND SURFACE RESTORED AS PER THE DEPARTMENT OF WATER MANAGEMENT STANDARDS AND SPECIFICATIONS.
- WHEN DIRECTED BY THE COMMISSIONER, THE CONTRACTOR IS REQUIRED TO REPLACE ANY BROKEN FRAMES AND LIDS OF SEWER STRUCTURES WITH THE DEPARTMENT OF WATER MANAGEMENT STANDARD FRAMES AND LIDS.
- THE FRAMES AND LIDS OF SEWER STRUCTURES TO BE ABANDONED, REMOVED, OR FILLED SHOULD BE SALVAGED, AND THE CONTRACTOR MUST NOTIFY THE DEPARTMENT OF WATER MANAGEMENT FOR PICK UP.
- IN ARTERIAL STREETS, PERFORATED LIDS MUST BE PLACED ON ALL SEWER STRUCTURES UNLESS OTHERWISE APPROVED BY THE COMMISSIONER. IN RESIDENTIAL STREETS, MANHOLES MAY REQUIRE CLOSED LIDS. CONTRACTOR TO COORDINATE WITH THE DEPARTMENT OF WATER MANAGEMENT INSPECTOR.
- DURING CONSTRUCTION OF THIS PROJECT, THE CONTRACTOR SHALL MAINTAIN THE SURFACE DRAINAGE OF THE ROAD AT ALL TIMES.
- IF THE CONDITION OF EXISTING CATCH BASINS OR INLETS IS SUCH THAT THEIR ADJUSTMENT IS NOT FEASIBLE AT THE TIME OF CONSTRUCTION, THE CONTRACTOR MUST FURNISH AND INSTALL NEW CATCH BASINS OR INLETS AND THEIR APPURTENANCES AS DIRECTED BY THE COMMISSIONER AND WITH THE CONCURRENCE OF THE DEPARTMENT OF WATER MANAGEMENT. THIS WORK WILL BE PAID FOR AT THE CONTRACT UNIT PRICE EACH FOR 'CATCH BASINS, TYPE A, 4 FT DIAMETER, TYPE 1 FRAME, OPEN LID (CITY OF CHICAGO)' OR FOR 'INLETS, TYPE A, TYPE 1 FRAME, OPEN LID (CITY OF CHICAGO)'.
- THE LOCATION OF PROPOSED WATER LINES, METER VAULTS, VALVES AND RPZ'S SHOWN ON THE PLANS ARE APPROXIMATE. THE CONTRACTOR SHALL MARK THE LAYOUT AND LOCATION OF THE WATER LINES, METER VAULTS, VALVES, AND RPZ'S FOR REVIEW BY COMMISSIONER PRIOR TO ANY EXCAVATION.
- THE CONTRACTOR SHALL VERIFY THE LOCATION OF ALL PROPOSED WATER SERVICE CONNECTIONS, THE CITY OF CHICAGO, DEPARTMENT OF WATER MANAGEMENT WILL PERFORM THE WATER SERVICE CONNECTION TO THE EXISTING WATER MAIN. IT SHALL BE THE CONTRACTOR'S RESPONSIBILITY TO OBTAIN ALL NECESSARY PERMITS AND PAY THE ASSOCIATED FEES. ALL PERMIT FEES WILL BE CONSIDERED INCIDENTAL TO THE CONTRACT.
- IN CASE OF DAMAGE TO THE CITY'S SEWER SYSTEM, PRIVATE AND PUBLIC DRAIN CONNECTIONS, AND/OR BENCH MONUMENTS, THE CONTRACTOR MUST CONTACT THE DEPARTMENT OF BUILDINGS, SEWER UNIT, IMMEDIATELY AT PHONE NUMBER (312) 744-3351. THE CONTRACTOR MUST, AT HIS/HER OWN COST, REPLACE THE AFFECTED SEWERS, DRAIN CONNECTIONS, SEWER STRUCTURES AND/OR BENCH MONUMENTS AS NECESSARY. THE SEWER FLOWS MUST BE MAINTAINED AT ALL TIMES.
- FLOW RESTRICTORS MUST BE INSTALLED IN ALL CATCH BASINS, OUTSIDE OF THE CENTRAL BUSINESS DISTRICT. FLOW RESTRICTORS MUST NOT BE INSTALLED IN CLOSE PROXIMITY TO VIADUCT AREAS, BUS STOPS, OR EMERGENCY ENTRANCES. FLOW RESTRICTORS ARE AVAILABLE FOR PICK-UP AT THE DWM'S CENTRAL DISTRICT, LOCATED AT 3901 S. ASHLAND AVENUE, BY CALLING (312) 747-1777, BETWEEN 7:00 AM - 3:00 PM, 48 HOURS IN ADVANCE.
- AS-BUILT PLANS MUST BE SUBMITTED SOON AFTER WORK COMPLETION. FINAL PAYMENT WILL NOT BE MADE TO THE CONTRACTOR UNTIL THE SEWER UNIT OF THE DWM ACKNOWLEDGES RECEIPT OF "AS-BUILT PLANS".
- IN CASE OF DAMAGE TO THE CITY OF CHICAGO SEWERS, PRIVATE AND PUBLIC DRAINS, SEWER STRUCTURES AND/OR BENCH MONUMENTS, THE CONTRACTOR SHALL IMMEDIATELY CONTACT THE DEPARTMENT OF WATER MANAGEMENT AT (312) 747-7892 OR (312) 747-7893.
- PERFORATED LIDS SHALL BE PLACED ON ALL MANHOLES AND CATCH BASINS.
- CITY OF CHICAGO WATER VALVE VAULTS AND SEWER STRUCTURES SHALL NOT BE CLOSED, COVERED OR OTHERWISE OBSTRUCTED DURING CONSTRUCTION WITHOUT WRITTEN PERMISSION FROM THE CITY OF CHICAGO DEPARTMENT OF WATER MANAGEMENT.
- WHENEVER, DURING CONSTRUCTION OPERATIONS, ANY LOOSE MATERIAL IS DEPOSITED IN THE FLOW LINE OF DRAINAGE STRUCTURES SUCH THAT THE NATURAL FLOW OF WATER IS OBSTRUCTED, IT SHALL BE REMOVED AT THE CLOSE OF EACH WORKING DAY. AT THE CONCLUSION OF CONSTRUCTION OPERATIONS, ALL UTILITY STRUCTURES SHALL BE FREE FROM DIRT AND DEBRIS. THE WORK SPECIFIED ABOVE WILL NOT BE PAID FOR SEPARATELY BUT SHALL BE INCLUDED IN THE COST FOR CATCH BASINS AND MANHOLES TO BE ADJUSTED IN THIS CONTRACT.
- ANY EXISTING STORM SEWER DAMAGED BY THE CONTRACTOR DURING CONSTRUCTION SHALL BE REPLACED BY THE CONTRACTOR AT NO COST TO THE CITY.
- THE CONTRACTOR SHALL MAINTAIN THE SURFACE DRAINAGE OF THE ROAD DURING CONSTRUCTION UNTIL THE CITY ACCEPTS MAINTENANCE OF THE IMPROVED STREET.
- FOR FULL DEPTH CONSTRUCTION OF THE STREET, PLEASE MAKE A NOTE IN THE PLAN ALL THE SEWER(S) IN THE PROJECT AREA WILL BE TELEVIEWED BEFORE AND AFTER CONSTRUCTION. CONTACT DEPARTMENT OF WATER MANAGEMENT AT (312) 747-4680.
- THE CONTRACTOR IS REQUIRED TO CONDUCT A PRE-CONSTRUCTION VIDEOTAPED INSPECTION PRIOR TO THE ISSUANCE OF A SEWER PERMIT AND A POST-CONSTRUCTION VIDEOTAPED INSPECTION PRIOR TO ACCEPTANCE OF THE SEWER. THE VIDEOTAPE MUST BE SUBMITTED TO THE SEWER UNIT OF THE DWM FOR REVIEW AND APPROVAL. SHOULD PRE-CONSTRUCTION TELEVISION INDICATE CONDITIONAL ISSUES WITH THE SEWER, IT SHALL BE REPLACED OR REHABILITATED PRIOR TO CONSTRUCTION AS PART OF THE PROJECT IMPROVEMENT.
- PLEASE SEE CDWM-SEWER SECTION'S REQUIREMENTS FOR EXISTING FACILITY CONSTRUCTION.

**SUMMARY OF QUANTITIES**

Item No.	Code Number	Description	Unit	Quantity
1	20200100	EARTH EXCAVATION	CU YD	1289
2	20101100C	TREE PROTECTION	EACH	18
3	20800150	TRENCH BACKFILL	CU YD	87
4	21101615	TOPSOIL FURNISH AND PLACE, 4"	SQ YD	1899
5	25200110	SODDING, SALT TOLERANT	SQ YD	1832
6	*****	TREE PLANTING, 2-1/2 INCH TO 3-INCH B&B	EACH	18
7	251K0100C	SHREDDED HARDWOOD BARK MULCH	SQ YD	68
8	28000510	INLET FILTERS	EACH	4
9	CDOT3110010	SAND CUSHION, VARIABLE DEPTH	CU YD	59
10	31101400	SUB-BASE GRANULAR MATERIAL, TYPE B, 6"	SQ YD	2940
11	35300200	PORTLAND CEMENT CONCRETE BASE COURSE, 7"	SQ YD	2380
12	40600290	BITUMINOUS MATERIALS (TACK COAT)	POUND	1071
13	40600525	LEVELING BINDER (HAND METHOD), N50	TON	2
14	40600635	LEVELING BINDER (MACHINE METHOD), N50	TON	200
15	40604060	HOT-MIX ASPHALT SURFACE COURSE, IL-9.5, MIX "D", N50	TON	267
16	42000300	PORTLAND CEMENT CONCRETE PAVEMENT 8"	SQ YD	73
17	42300400	PORTLAND CEMENT CONCRETE DRIVEWAY PAVEMENT, 8"	SQ YD	63
18	42400200C	PORTLAND CEMENT CONCRETE SIDEWALK, 5-INCH	SQ FT	3694
19	42400210C	PORTLAND CEMENT CONCRETE ADA CURB RAMP, 5-INCH	SQ FT	1094
20	42400800C	LINEAR DETECTABLE WARNING TILES (CAST IRON)	SQ FT	108
21	44000100C	PAVEMENT REMOVAL	SQ YD	2610
22	44000500	COMBINATION CURB AND GUTTER REMOVAL	FOOT	497
23	44000600	SIDEWALK REMOVAL	SQ FT	1072
24	4420200C	SAW CUTTING PAVEMENT	FOOT	81
25	55020108C	STORM SEWER, EXTRA STRENGTH VITRIFIED CLAY PIPE, TYPE 2, 8 INCH	FOOT	24
26	55020112C	STORM SEWER, EXTRA STRENGTH VITRIFIED CLAY PIPE, TYPE 2, 12 INCH	FOOT	303
27	55120400C	SEWER CLEANING AND TELEVISION	FOOT	2,534
28	60200105C	CATCH BASINS, TYPE A, 4-FOOT DIAMETER, TYPE 1 FRAME, OPEN LID (CITY OF CHICAGO)	EACH	4
29	*****	MANHOLES, TYPE B, 4'-DIAMETER, FRAME AND OPEN LID (CITY OF CHICAGO)	EACH	2
30	60220700C	ADDITIONAL MASONRY	VERT FT	2
31	60250200C	CATCH BASINS TO BE ADJUSTED	EACH	1
32	60255000C	MANHOLES TO BE ADJUSTED	EACH	1
33	60500050C	REMOVING CATCH BASINS	EACH	3
34	60620100C	COMBINATION CONCRETE CURB AND GUTTER, TYPE B-V.12	FOOT	1687
35	6060060500C	CONCRETE CURB, TYPE B	FOOT	23
36	67020100C	ENGINEER'S FIELD OFFICE	CAL MONTH	6
37	70120300C	TRAFFIC CONTROL COMPLETE	L SUM	1
38	70120800C	AGGREGATE FOR TEMPORARY ACCESS	TON	193
39	72020300C	CONSTRUCTION SIGN	EACH	2
40	72420100C	REMOVE AND SALVAGE SIGN PANEL	EACH	2
41	72420110C	REMOVE AND SALVAGE SIGN PANEL AND POST ASSEMBLY	EACH	0
42	72920110C	SIGN SUPPORT POST, DIG METHOD	EACH	5
43	72920120C	SIGN SUPPORT POST, DRILL METHOD	EACH	0
44	78000400	THERMOPLASTIC PAVEMENT MARKING-LINE 6"	FOOT	95
45	78000650	THERMOPLASTIC PAVEMENT MARKING-LINE 24"	FOOT	16
46	X2600009	SIGN PANEL, TYPE 1, RETROREFLECTIVE, TYPE A - DOUBLE-SIDED	SQ FT	2
47	X2600010	SIGN PANEL, TYPE 1, RETROREFLECTIVE, TYPE A - SINGLE-SIDED	SQ FT	5
48	999X1000C	PROTECTIVE COAT	SQ YD	3,218
49	999X0900C	DRILL AND GROUT DOWEL AND TIE BARS	EACH	6
50	*****	DRIVEWAY AND ALLEY RETURN PAVEMENT REMOVAL (SPECIAL)	SQ YD	555
51	IDOT 56100020	DUCTILE IRON WATER MAIN TEE, 8" X 8"	EACH	1
52	CDOT 56120200C	WATER MAIN INSTALLED IN OPEN CUT, 8"	FOOT	408
53	CDOT 56105000C	WATER VALVE, 8"	EACH	1
54	IDOT 56109420	DUCTILE IRON WATER MAIN FITTINGS 8" 45 DEGREE BEND	EACH	9
55	IDOT 56200300	WATER SERVICE LINE 1"	LF	84
56	IDOT 56400700	FIRE HYDRANTS (SPECIAL - FLUSHING HYDRANT)	EACH	1
57	CDOT 60221100C	MANHOLE, 5 FT DIAMETER, TYPE A, FRAME AND CLOSED LID (CITY OF CHICAGO)	EACH	1
58	CDOT 56120603C	TRANSITION SLEEVE, 8"	EACH	3
59	IDOT X5620030	WATER SERVICE CONNECTION 1-INCH	EACH	2
60	*****	RESILIENT WEDGE VALVE 8"	EACH	2
61	CDOT 56520700C	WATER SERVICE SHUT OFF BOX REMOVAL AND REPLACEMENT	EACH	2
62	CDOT 20820200C	TRENCH BACKFILL, WATERMAIN	CU YD	209
63	81020280C	CONDUIT, DIRECTIONAL BORED, COILABLE NONMETALLIC CONDUIT, SCHEDULE 80, 1 1/4" DIA.	LN FT	1691
64	81020285C	CONDUIT, DIRECTIONAL BORED, COILABLE NONMETALLIC CONDUIT, SCHEDULE 80, 2" DIA.	LN FT	80
65	81020300C	TRENCH AND BACKFILL WITH SCREENINGS	LN FT	1691
66	81120110C	CONDUIT, WATER ATTACHED TO POLE, 2"	EACH	1
67	81420120C	HANDHOLE, ELECTRIC, WITH 24" FRAME AND COVER	EACH	1
68	81720220C	ELECTRIC CABLE IN CONDUIT, TRIPLEX, 2-1/C NO. 6, 1-1/C NO. 8 GROUND	LN FT	1939
70	82120300C	LUMINAIRE, LED, ACORN, ARTERIAL, RESIDENTIAL	EACH	10
71	82120860C	LUMINAIRE, LED, COBRA HEAD, RESIDENTIAL	EACH	10
72	82121300C	LUMINAIRE NODE, INTERNAL	EACH	10
73	82520200C	CONTROLLER, STREET LIGHTING, POLE MOUNTED, CONSTANT POWER, 1-PHASE, 120/240V, 60A	EACH	1
74	8300023C	LIGHT POLE, ALUMINUM, DAVIT, 18 FT. M.H., 8 FT DAVIT ARM	EACH	10
75	83620210C	LIGHT POLE FOUNDATION, METAL, 10" BOLT CIRCLE, 8 5/8" X 5'	EACH	10
76	*****	CABLE ANTI-THEFT DEVICE FOR HELIX FOUNDATIONS	EACH	10
77	89520100C	REMOVE EXISTING STREET LIGHTING EQUIPMENT	EACH	7
78	89521100C	BREAKDOWN CONCRETE FOUNDATION, LIGHT POLE	EACH	7
79	66900530	SOIL DISPOSAL ANALYSIS	EACH	1
80	66901001	REGULATED SUBSTANCES PRE-CONSTRUCTION PLAN	L SUM	1
81	66901003	REGULATED SUBSTANCES FINAL CONSTRUCTION REPORT	L SUM	1
82	66901006	ON-SITE MONITORING OF REGULATED SUBSTANCES	CAL DA	15
83	66900200	NON-SPECIAL WASTE DISPOSAL	CU YD	1,155
84	59923900C	PLUG EXISTING SEWER	EACH	3
85	69921400C	CATCH BASIN, MANHOLES, WATER VALVES, ROUNDWAYS AND INLETS TO BE CLEANED	EACH	2
86	X0327989	REMOVE EXISTING BRICK PAVERS	SQ FT	0
87	X0540000	BRICK PAVERS	SQ FT	0
88	35300060	PORTLAND CEMENT CONCRETE BASE COURSE, 4"	SQ YD	0

**TREE SCHEDULE**

SYMBOL	NAME	COMMON NAME	QUANTITY
BO	QUERCUS MACROCARPA	BURR OAK	7 EACH
CO	CELTIS OCCIDENTALS	HACKBERRY	7 EACH
BC	TAXODIUM DISTICHUM	BALD CYPRESS	4 EACH
	• SPRING PLANTING	TOTALS	18 EACH

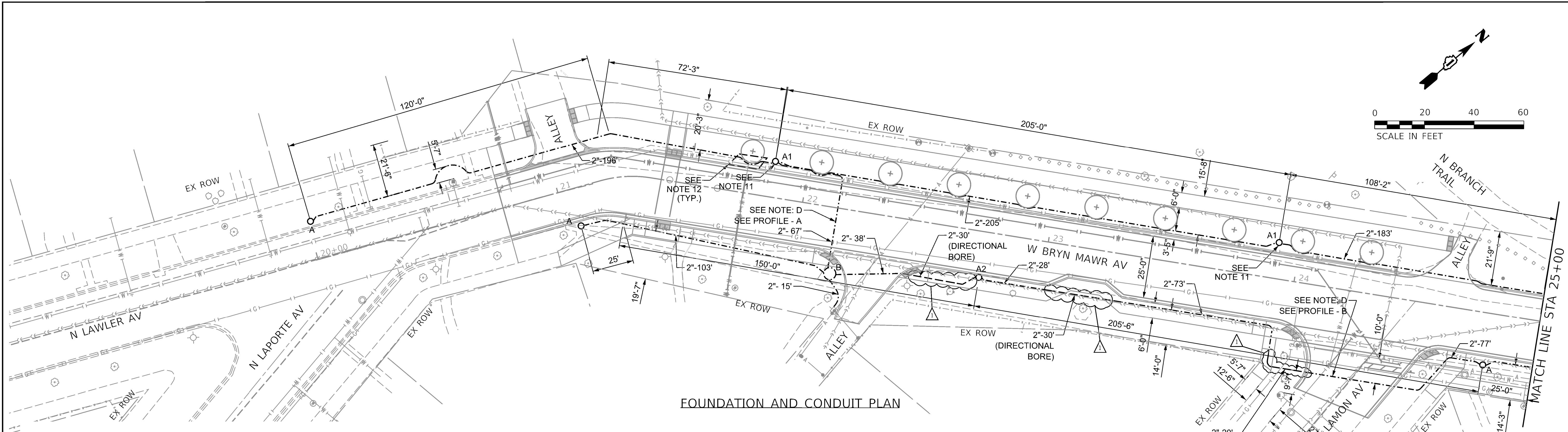
**GENERAL NOTES**

SCALE:	SHEET	OF	SHEETS	STA.	TO	STA.	F.A. RTE.	SECTION	COUNTY	TOTAL SHEETS	SHEET NO.
									COOK	32	3
CONTRACT NO.											
ILLINOIS   FED. AID PROJECT											

**CITY OF CHICAGO  
DEPARTMENT OF TRANSPORTATION**

USER NAME = SUSERS	DESIGNED - JS	ADDENDUM #1 - 07/23/2025
	CHECKED - GC	REVISED -
PLOT SCALE = 1:20	DRAWN - PM	REVISED -
PLOT DATE = SDATES	DATE - 05/30/2025	REVISED -

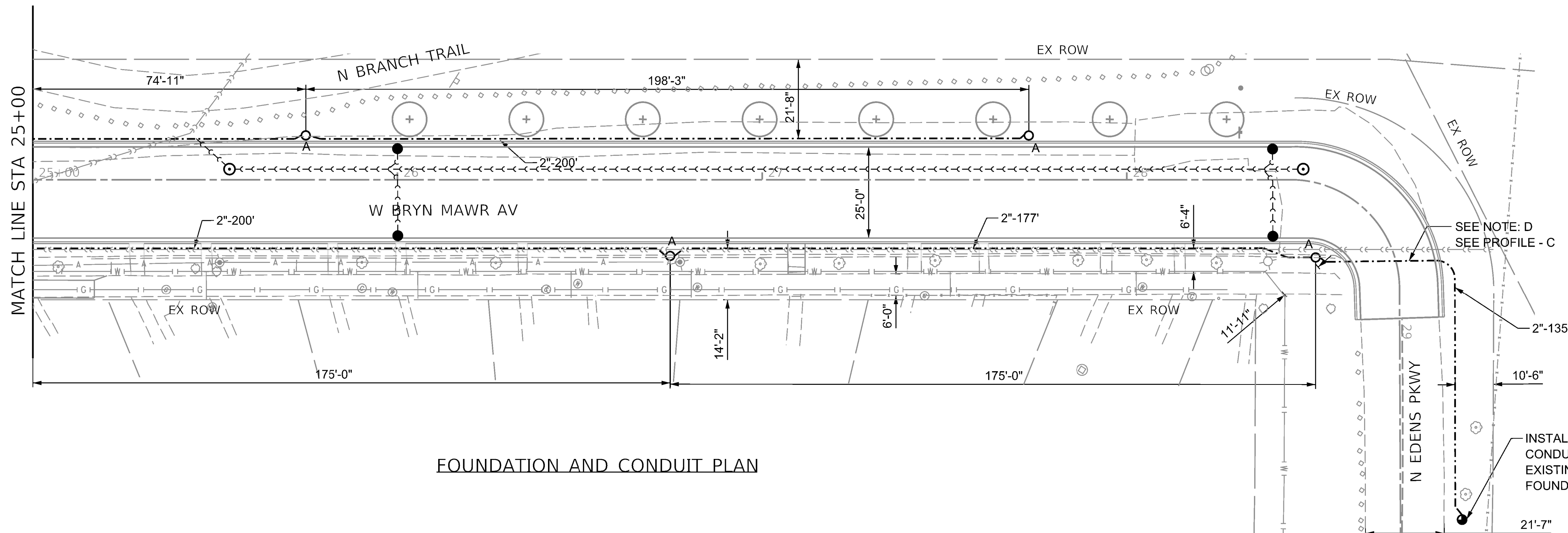
**DELTA ENGINEERING GROUP, LLC**  
CONSULTING ENGINEERS, CONSTRUCTION MANAGERS, SURVEYORS  
111 W JACKSON BLVD, SUITE 910  
CHICAGO, IL 60604  
T.312.377.7700, F.312.427.6145



FOUNDATION AND CONDUIT PLAN

**GENERAL NOTES:**

1. ALL FOUNDATION FOR LIGHT POLES LOCATED 3'-0" FROM THE FACE OF THE CURB, EITHER SIDE OF THE ROADWAY.
2. GROUND RODS ARE TO BE CONNECTED TO THE POLE OR CONTROLLER GROUNDING LUGS VIA A #2 BARE COPPER WIRE. SEE FOUNDATION DETAIL-DRAWING NO. 828.
3. THE GROUND CONNECTOR SHALL HAVE NO SPLICE OR KINKS BELOW GRADE. IT SHALL BE SOLIDLY CONNECTED TO THE GROUNDING LUG OF EACH POLE AND TO THE GROUND ROD AT THE SERVICE INSTALLATION.
4. ALL POLES AND THE STREET LIGHT CONTROLLER SHALL BE CONNECTED TO A CONTINUOUS GROUND CONSISTING OF A GREEN INSULATED ELECTRICAL CONDUCTOR 600 V. EPRN WITH HYPLON JACKET. THIS CONDUCTOR SHALL BE PLACED INSIDE THE CONDUIT ALONG WITH THE INSULATED CABLES.
5. UPON COMPLETION OF INSTALLATION OF ELECTRICAL GROUNDING SYSTEMS, TEST GROUND RESISTANCE WITH GROUND RESISTANCE TESTER, WHERE TESTS SHOW RESISTANCE IS OVER 25 OHMS. TAKE APPROPRIATE ACTION TO REDUCE RESISTANCE TO 25 OHMS, OR LESS, BY DRIVING ADDITIONAL GROUND RODS; THEN RETEST TO DEMONSTRATE COMPLIANCE.
6. LIGHT POLE FOUNDATIONS AT THE END OF ALL CIRCUIT RUNS SHALL BE INSTALLED WITH (2) 2" ELBOWS. THE EXTRA ELBOW WILL BE SEALED AND CAPPED FOR FUTURE EXPANSION OF THE LIGHTING SYSTEM. THIS WORK SHALL BE INCLUDED IN THE CONTRACT.
7. WHENEVER NEW CONDUIT IS BROUGHT TO EXISTING MH/HH, THAT MH/HH NEEDS TO BE CLEANED. A HOLE DRILLED INTO MH/HH FOR CONDUITS TO GO INTO THE MH/HH. CABLES SHALL BE RACKED.
8. CONTRACTOR TO CONTACT D.I.G.G.E.R @ 312-744-7000 ALL UTILITY COMPANIES TO LOCATE EXISTING UNDERGROUND UTILITY LINES PRIOR TO COMMENCEMENT OF WORK.
9. CITY OF CONSTRUCTION DEPARTMENT OR ITS CONTRACTOR MUST COORDINATE THE LIGHTING SCHEME WITH COMED BY CALLING THEIR ACCOUNT MANAGER @ 773-838-4345
10. CONDUIT TO BE INSTALLED USING OPEN CUT TRENCH METHOD, UNLESS OTHERWISE NOTED.
11. R.E. SHALL BE PRESENT DURING THE EXCAVATION AND INSTALLATION OF THE PROPOSED CONDUIT.
12. R.E. SHALL BE PRESENT DURING THE EXCAVATION AND INSTALLATION OF THE PROPOSED CONDUIT.



FOUNDATION AND CONDUIT PLAN

**LEGEND:**

- OPEN CUT TRENCH (SCHEDULE 80)
- DIRECTIONAL BORE (SCHEDULE 80)

**NOTES:**

- "A" -- INSTALL 10" B.C. X 5' HELIX FOUNDATION AS PER DRAWING NO. 936, 3' OFF FACE OF CURB UNLESS NOTED OTHERWISE
- "A1" -- INSTALL 10" B.C. X 5' HELIX FOUNDATION AS PER DRAWING NO. 936, 4' OFF FACE OF CURB UNLESS NOTED OTHERWISE
- "A2" -- INSTALL 10" B.C. X 5' HELIX FOUNDATION AS PER DRAWING NO. 936, 1.5' OFF FACE OF CURB UNLESS NOTED OTHERWISE
- "B" -- INSTALL 30" HANDHOLE AS PER DRAWING NO. 867 WITH 24" FRAME AND COVER AS PER DRAWING NO. 872
- "D" -- REFER CONDUIT DETAILS SHEET 17 FOR DETAILS

MODEL: SHODLNAME  
FILE NAME: SFILELS

**DELTA ENGINEERING GROUP, LLC**  
CONSULTING ENGINEERS, CONSTRUCTION MANAGERS, SURVEYORS  
111 W JACKSON BLVD, SUITE 910  
CHICAGO, IL 60604  
T 312.377.7700, F 312.427.6145

USER NAME = SUSERS	DESIGNED - AM	ADDENDUM #1 - 07/23/2025
PLOT SCALE = 1:20	CHECKED - HM	REVISED -
PLOT DATE = SDATES	DRAWN - SA	REVISED -
	DATE - 05/30/2025	REVISED -

**CITY OF CHICAGO**  
**DEPARTMENT OF TRANSPORTATION**

WPA  
W BRYN MAWR AV (N LAPORTE AV TO N EDENS PKWY)  
LIGHTING FOUNDATION AND CONDUIT PLAN

SCALE: SHEET OF SHEETS STA. TO STA.

ATLAS D - 9	DWG. NO. 24-044			
F.A. RTE.	SECTION	COUNTY	TOTAL SHEETS	SHEET NO.
		COOK	32	14
CONTRACT NO.				
ILLINOIS FED. AID PROJECT				