



ADDENDUM

Public Building Commission of Chicago | Richard J. Daley Center | 50 West Washington Street, Room 200 | Chicago, Illinois 60602 | (312) 744-3090 | pbcchicago.com

ADDENDUM NO.: 01
PROJECT NAME: CDOT WPA Street Reconstruction (W. 92nd St./W. 106th St./W. 107th St./W. 114th St.)
PROJECT NO.: #22837
CONTRACT NO.: C1625
DATE OF ISSUE: June 27, 2025

NOTICE OF CHANGES, MODIFICATIONS, OR CLARIFICATIONS TO CONTRACT DOCUMENTS

The following changes, modifications, or clarifications are hereby incorporated and made an integral part of the Contract Documents. Unless clearly expressed otherwise by this Addendum, all terms and conditions defined in the original Contract Documents shall continue in full force and effect and shall have the same meaning in this Addendum. Issued Addenda represent responses/clarifications to various inquiries. Contractors shall be responsible for including all associated labor/material costs in its bid. Drawings/specifications corresponding to inquiry responses will be issued with the Issue for Construction Documents, upon issuance of building permit.

ITEM NO. 1: CHANGE TO KEY DATES

None.

ITEM NO. 2: REVISIONS TO BOOK 1 – PBC INSTRUCTIONS TO BIDDERS

Change 1 Book 1 – **DELETE** SCHEDULE OF PRICES – W. 92nd STREET (Pages 19 and 20 of 55) and **REPLACE WITH** REVISED SCHEDULE OF PRICES – W. 92nd STREET, included in this Addendum No. 1. - *Line 99 - Cable Anti-Theft Device for Helix Foundation was added.*

Change 2 Book 1 – **DELETE** SCHEDULE OF PRICES – W. 106th STREET (Pages 21 and 22 of 55) and **REPLACE WITH** REVISED SCHEDULE OF PRICES – W. 106th STREET included in this Addendum No. 1. - *Line 99 - Cable Anti-Theft Device for Helix Foundation was added.*

Change 3 Book 1 – **DELETE** SCHEDULE OF PRICES – W. 107th STREET (Pages 23 and 24 of 55) and **REPLACE WITH** REVISED SCHEDULE OF PRICES – W. 107th STREET included in this Addendum No. 1. - *Line 99 - Cable Anti-Theft Device for Helix Foundation was added.*

Change 4 Book 1 – **DELETE** SCHEDULE OF PRICES – 114th STREET (Pages 25 and 26 of 55) and **REPLACE WITH** REVISED SCHEDULE OF PRICES – 114th STREET included in this Addendum No. 1. - *Line 99 - Cable Anti-Theft Device for Helix Foundation was added.*

NOTE: Updated Fillable Master Bid Form (Excel version) is available from the Cross Rhodes Print & Technologies Planroom: <https://www.x-rhodesplanroom.com/>, the Current Opportunities Page at: <https://www.pbcchicago.com/opportunities/cdotwpa92nd106th107th114th/> the hyperlink at the bottom of this document, as well as the PBC Alert communication.

ITEM NO. 3: REVISIONS TO BOOK 2 – PBC STANDARD TERMS AND CONDITIONS

None.

ITEM NO. 4: REVISIONS TO BOOK 3 – TECHNICAL SPECIFICATIONS

CHANGE 1: Book 3 – **ADD** Electrical Specification 1593 CABLE ANTI-THEFT DEVICE FOR HELIX FOUNDATIONS

ITEM NO. 5: REVISIONS TO DRAWINGS

None.

ITEM NO. 6: REQUESTS FOR INFORMATION

RFI-1.

Question: Please tell me the warranty period for the above-referenced project.

Response: Please refer to Book 2 Standard Terms and Conditions, Section 13.10 Guarantees and Warranties.

This Addendum includes the following attached specifications and hyperlinked Documents:

1. BOOK 1 – REVISED SCHEDULE OF PRICES – W. 92nd STREET (Pages 19 and 20 of 55) (*attached*).
2. BOOK 1 – REVISED SCHEDULE OF PRICES – W. 106TH STREET (Pages 21 and 22 of 55) (*attached*).
3. BOOK 1 – REVISED SCHEDULE OF PRICES – W. 107TH STREET (Pages 23 and 24 of 55) (*attached*).
4. BOOK 1 – REVISED SCHEDULE OF PRICES – W. 114TH STREET.(Pages 25 and 26 of 55) (*attached*).
5. BOOK 3 – ELECTRICAL SPECIFICATION 1593 CABLE ANTI-THEFT DEVICE FOR HELIX FOUNDATIONS (*attached*).
6. Updated Fillable Master Bid Form: https://www.pbcchicago.com/wp-content/uploads/2025/05/FM_PBC_DBT_WPA_92nd106th107th114th_C1625_MasterBidForm_20250627_Final_Ad1.xlsx

This Addendum includes the following attached Drawings:

1. None.

END OF ADDENDUM NO. 01

SCHEDULE OF PRICES

CHICAGO DEPARTMENT OF TRANSPORTATION WORKS PROGRESS ADMINISTRATION ("WPA") STREET RECONSTRUCTION

LOCATION: W. 92nd St. (from S. Leavitt St. to S. Hamilton Ave.)

CDOT PROJECT NO.: B-4-305 PBC PROJECT NO.: 22837

PBC CONTRACT: C1625

Bidder's pricing for each line item should carry its share of the costs of work, plus its share of overhead and profit. Bidders should avoid nominal pricing for some lines and enhanced pricing for other lines.

Bids that the PBC considers to be materially unbalanced will be rejected.

Line	Code Number	Description	Unit	Estimated Quantity	Unit Price	Cost
1	20100110	TREE REMOVAL (6 TO 15 UNITS DIAMETER)	UNIT	15	\$	-
2	20100210	TREE REMOVAL (OVER 15 UNITS DIAMETER)	UNIT	0	\$	-
3	20101100C	TREE PROTECTION	EACH	15	\$	-
4	20101210C	ROOT PRUNING	FOOT	278	\$	-
5	20200100	EARTH EXCAVATION	CU YD	524	\$	-
6	202Z0200C	EARTH EXCAVATION (SOIL TO CCDD FACILITY)	CU YD	298	\$	-
7	20700220C	POROUS GRANULAR EMBANKMENT, SUBGRADE	CU YD	36	\$	-
8	20800150	TRENCH BACKFILL	CU YD	60	\$	-
9	208Z0200C	TRENCH BACKFILL, WATERMAIN	CU YD	0	\$	-
10	21101615	TOPSOIL FURNISH AND PLACE, 4"	SQ YD	646	\$	-
11	251K0100C	SHREDDED HARDWOOD BARK MULCH	SQ YD	21	\$	-
12	25200110	SODDING, SALT TOLERANT	SQ YD	646	\$	-
13	253T0018C	TREE, ORNAMENTAL, 2.5" - 3.0" CALIPER, BALLED AND BURLAPPED	EACH	0	\$	-
14	253T0028C	TREE, SHADE, 2.5" - 3.0" CALIPER, BALLED AND BURLAPPED	EACH	1	\$	-
15	28000510	INLET FILTERS	EACH	4	\$	-
16	31101400	SUBBASE GRANULAR MATERIAL, TYPE B 6"	SQ YD	1173	\$	-
17	35300200	PORTLAND CEMENT CONCRETE BASE COURSE 7"	SQ YD	901	\$	-
18	40600290	BITUMINOUS MATERIALS (TACK COAT)	POUND	896	\$	-
19	40600525	LEVELING BINDER (HAND METHOD), N50	TON	2	\$	-
20	40600635	LEVELING BINDER (MACHINE METHOD), N50 1-1/2 INCH	TON	112	\$	-
21	40604060	HOT-MIX ASPHALT SURFACE COURSE, IL-9.5, MIX "D", N50	TON	149	\$	-
22	42001300	PROTECTIVE COAT	SQ YD	481	\$	-
23	42300400	PORTLAND CEMENT CONCRETE DRIVEWAY PAVEMENT, 8 INCH	SQ YD	145	\$	-
24	42400200C	PORTLAND CEMENT CONCRETE SIDEWALK 5 INCH	SQ FT	630	\$	-
25	42400210C	PORTLAND CEMENT CONCRETE ADA RAMP 5 INCH	SQ FT	614	\$	-
26	42400410C	PORTLAND CEMENT CONCRETE SIDEWALK 8 INCH	SQ FT	356	\$	-
27	42400420C	PORTLAND CEMENT CONCRETE ADA RAMP 8 INCH	SQ FT	60	\$	-
28	42400800C	LINEAR DETECTABLE WARNING TILES (CAST IRON)	SQ FT	72	\$	-
29	42400810C	RADIAL DETECTABLE WARNING TILES (CAST IRON)	SQ FT	0	\$	-
30	44000050C	HOT-MIX ASPHALT SURFACE REMOVAL, VARIABLE DEPTH	SQ YD	427	\$	-
31	44000100	PAVEMENT REMOVAL	SQ YD	1267	\$	-
32	44000300	CURB REMOVAL	FOOT	117	\$	-
33	44000500	COMBINATION CURB AND GUTTER REMOVAL	FOOT	134	\$	-
34	44000600	SIDEWALK REMOVAL	SQ FT	1275	\$	-
35	442Z0200C	SAW CUTTING PAVEMENT	FOOT	465	\$	-
36	550Z0108C	STORM SEWER, EXTRA STRENGTH VITRIFIED CLAY PIPE, TYPE 2, 8 INCH	FOOT	0	\$	-
37	550Z0132C	STORM SEWER, DUCTILE IRON PIPE, TYPE 2, 8 INCH	FOOT	72	\$	-
38	550Z0134C	STORM SEWER, DUCTILE IRON PIPE, TYPE 2, 12 INCH	FOOT	0	\$	-
39	551Z0200C	EXISTING SEWER TO BE REMOVED	FOOT	0	\$	-
40	551Z0400C	SEWER CLEANING AND TELEVISION	FOOT	1132	\$	-
41	56100020	DUCTILE IRON WATER MAIN TEE, 8" X 8"	EACH	0	\$	-
42	56105000C	WATER VALVE, 8 INCH	EACH	0	\$	-
43	56109420	DUCTILE IRON WATER MAIN FITTINGS 8" 45.00 DEGREE BEND	EACH	0	\$	-
44	561Z0200C	WATER MAIN INSTALLED IN OPEN CUT, 8 INCH	FOOT	0	\$	-
45	56400500C	REMOVE EXISTING FIRE HYDRANT	EACH	0	\$	-
46	56400600C	HYDRANT INSTALLATION	EACH	0	\$	-
47	56400700	FIRE HYDRANTS (SPECIAL)	EACH	0	\$	-
48	565Z0100C	REMOVE EXISTING VALVE AND VAULT	EACH	0	\$	-
49	*****	RESILIENT WEDGE VALVE 8"	EACH	0	\$	-
50	60200105C	CATCH BASINS, TYPE A, 4'-DIAMETER, TYPE 1 FRAME, OPEN LID (CITY OF CHICAGO)	EACH	4	\$	-
51	60221100C	MANHOLES, TYPE A, 5'-DIAMETER, TYPE 1 FRAME, CLOSED LID (CITY OF CHICAGO)	EACH	0	\$	-
52	60255800C	MANHOLES TO BE ADJUSTED WITH NEW TYPE 1 FRAME, CLOSED LID	EACH	1	\$	-
53	602Z0700C	ADDITIONAL MASONRY	FOOT	1	\$	-
54	604Z0100C	FRAMES	EACH	1	\$	-
55	604Z0200C	LIDS	EACH	1	\$	-
56	60500040C	REMOVING MANHOLES	EACH	2	\$	-
57	60500050C	REMOVING CATCH BASINS	EACH	3	\$	-
58	60500060C	REMOVING INLETS	EACH	3	\$	-
59	60600605	CONCRETE CURB, TYPE B	FOOT	47	\$	-
60	606Z0100C	COMBINATION CONCRETE CURB AND GUTTER, TYPE B-V12	FOOT	659	\$	-
61	66900200	NON-SPECIAL WASTE DISPOSAL	CU YD	524	\$	-
62	66900530	SOIL DISPOSAL ANALYSIS	EACH	1	\$	-
63	66901001	REGULATED SUBSTANCES PRE-CONSTRUCTION PLAN	L SUM	1	\$	-
64	66901003	REGULATED SUBSTANCES FINAL CONSTRUCTION REPORT	L SUM	1	\$	-
65	66901006	REGULATED SUBSTANCES MONITORING	CAL DAY	20	\$	-

SCHEDULE OF PRICES

CHICAGO DEPARTMENT OF TRANSPORTATION WORKS PROGRESS ADMINISTRATION ("WPA") STREET RECONSTRUCTION

LOCATION: W. 92nd St. (from S. Leavitt St. to S. Hamilton Ave.)

CDOT PROJECT NO.: B-4-305 PBC PROJECT NO.: 22837

PBC CONTRACT: C1625

Bidder's pricing for each line item should carry its share of the costs of work, plus its share of overhead and profit. Bidders should avoid nominal pricing for some lines and enhanced pricing for other lines.

Bids that the PBC considers to be materially unbalanced will be rejected.

Line	Code Number	Description	Unit	Estimated Quantity	Unit Price	Cost
66	670Z0100C	ENGINEER'S FIELD OFFICE	CAL MO	3	\$	-
67	701Z0300C	TRAFFIC CONTROL COMPLETE	L SUM	1	\$	-
68	701Z0800C	AGGREGATE FOR TEMPORARY ACCESS	TON	142	\$	-
69	*****	CONSTRUCTION SIGN	EACH	2	\$	-
70	720Z0810C	SIGN PANEL, TYPE 1, RETROREFLECTIVE	SQ FT	67	\$	-
71	724Z0100C	REMOVE AND SALVAGE SIGN PANEL	SQ FT	12	\$	-
72	724Z0110C	REMOVE AND SALVAGE SIGN PANEL AND POST ASSEMBLY	EACH	7	\$	-
73	729Z0110C	SIGN SUPPORT POST, DIG METHOD	FOOT	127	\$	-
74	729Z0120C	SIGN SUPPORT POST, DRILL METHOD	FOOT	0	\$	-
75	78000400	THERMOPLASTIC PAVEMENT MARKING - LINE 6"	FOOT	0	\$	-
76	78000650	THERMOPLASTIC PAVEMENT MARKING - LINE 24"	FOOT	295	\$	-
77	799Z0300C	FURNISH AND INSTALL POLE AND BASE	EACH	4	\$	-
78	801Z0100C	MAINTENANCE OF STREET LIGHTING SYSTEM	L SUM	1	\$	-
79	80400200C	ELECTRIC UTILITY SERVICE CONNECTION	EACH	1	\$	-
80	804Z0140C	ELECTRIC SERVICE INSTALLATION, 200 AMP	EACH	1	\$	-
81	810Z0205C	CONDUIT IN TRENCH, GALVANIZED STEEL, 2" DIA.	FOOT	35	\$	-
82	810Z0265C	CONDUIT IN TRENCH, PVC (SCHEDULE 80), 2" DIA.	FOOT	115	\$	-
83	810Z0280C	CONDUIT, DIRECTIONAL BORED, COILABLE NONMETALLIC CONDUIT, SCHEDULE 80, 1 1/4" DIA.	FOOT	0	\$	-
84	810Z0285C	CONDUIT, DIRECTIONAL BORED, COILABLE NONMETALLIC CONDUIT, SCHEDULE 80, 2" DIA.	FOOT	434	\$	-
85	810Z0300C	TRENCH AND BACKFILL WITH SCREENINGS	FOOT	150	\$	-
86	811Z0210C	CONDUIT RISER ATTACHED TO POLE, 2"	EACH	1	\$	-
87	814Z0120C	HANDHOLE, ELECTRIC, WITH 24" FRAME AND COVER	EACH	1	\$	-
88	814Z0400C	CLEAN EXISTING CITY MANHOLE OR HANDHOLE	EACH	0	\$	-
89	814Z0500C	DRILL EXISTING ELECTRIC HANDHOLE OR MANHOLE	EACH	0	\$	-
90	817Z0220C	ELECTRIC CABLE IN CONDUIT, TRIPLEX, 2-1/C NO. 6, 1-1/C NO. 8 GROUND	FOOT	675	\$	-
91	81800320	AERIAL CABLE, 3-1/C NO. 4 WITH MESSENGER WIRE	FOOT	370	\$	-
92	818Z0120C	RACK, SECONDARY AERIAL 3 WIRE	EACH	2	\$	-
93	821Z0300C	LUMINAIRE, LED, ACORN, ARTERIAL, RESIDENTIAL	EACH	3	\$	-
94	821Z0860C	LUMINAIRE, LED, COBRA HEAD, RESIDENTIAL	EACH	3	\$	-
95	821Z1300C	LUMINAIRE NODE, INTERNAL	EACH	3	\$	-
96	825Z0200C	CONTROLLER, STREET LIGHTING, POLE MOUNTED, CONSTANT POWER, 1-PHASE, 120/240V, 60A	EACH	1	\$	-
97	83000023C	LIGHT POLE, ALUMINUM, DAVIT, 18 FT. M.H., 8 FT DAVIT ARM	EACH	3	\$	-
98	836Z0210C	LIGHT POLE FOUNDATION, METAL, 10" BOLT CIRCLE, 8 5/8" X 5'	EACH	4	\$	-
99	1593	CABLE ANTI-THEFT DEVICE FOR HELIX FOUNDATION	EACH	4	\$	-
100	84400105	RELOCATE EXISTING LIGHTING UNIT	EACH	1	\$	-
101	895Z0100C	REMOVE EXISTING STREET LIGHTING EQUIPMENT	L SUM	900	\$	-
102	895Z1100C	BREAKDOWN CONCRETE FOUNDATION, LIGHT POLE	EACH	2	\$	-
103	999X0700C	RAILROAD PROTECTIVE LIABILITY INSURANCE	L SUM	0	\$	-
104	999X0900C	DRILL AND GROUT DOWEL AND TIE BARS	EACH	315	\$	-
105	TOTAL FOR 22837/B-4-305 - W. 92nd St.					\$ -

SCHEDULE OF PRICES

CHICAGO DEPARTMENT OF TRANSPORTATION WORKS PROGRESS ADMINISTRATION ("WPA") STREET RECONSTRUCTION

LOCATION: W. 106th St. from S. Christiana Ave. to S. Kedzie Ave.

CDOT PROJECT NO.: B-4-308 PBC PROJECT NO.: 22837

PBC CONTRACT: C1625

Bidder's pricing for each line item should carry its share of the costs of work, plus its share of overhead and profit. Bidders should avoid nominal pricing for some lines and enhanced pricing for other lines.

Bids that the PBC considers to be materially unbalanced will be rejected.

Line	Code Number	Description	Unit	Estimated Quantity	Unit Price	Cost
1	20100110	TREE REMOVAL (6 TO 15 UNITS DIAMETER)	UNIT	0	\$	-
2	20100210	TREE REMOVAL (OVER 15 UNITS DIAMETER)	UNIT	0	\$	-
3	20101100C	TREE PROTECTION	EACH	18	\$	-
4	20101210C	ROOT PRUNING	FOOT	298	\$	-
5	20200100	EARTH EXCAVATION	CU YD	895	\$	-
6	202Z0200C	EARTH EXCAVATION (SOIL TO CCDD FACILITY)	CU YD	1241	\$	-
7	20700220C	POROUS GRANULAR EMBANKMENT, SUBGRADE	CU YD	134	\$	-
8	20800150	TRENCH BACKFILL	CU YD	120	\$	-
9	208Z0200C	TRENCH BACKFILL, WATERMAIN	CU YD	220	\$	-
10	21101615	TOPSOIL FURNISH AND PLACE, 4"	SQ YD	1543	\$	-
11	251K0100C	SHREDDED HARDWOOD BARK MULCH	SQ YD	26	\$	-
12	25200110	SODDING, SALT TOLERANT	SQ YD	1543	\$	-
13	253T0018C	TREE, ORNAMENTAL, 2.5" - 3.0" CALIPER, BALLED AND BURLAPPED	EACH	0	\$	-
14	253T0028C	TREE, SHADE, 2.5" - 3.0" CALIPER, BALLED AND BURLAPPED	EACH	19	\$	-
15	28000510	INLET FILTERS	EACH	10	\$	-
16	31101400	SUBBASE GRANULAR MATERIAL, TYPE B 6"	SQ YD	4105	\$	-
17	35300200	PORTLAND CEMENT CONCRETE BASE COURSE 7"	SQ YD	3457	\$	-
18	40600290	BITUMINOUS MATERIALS (TACK COAT)	POUND	2334	\$	-
19	40600525	LEVELING BINDER (HAND METHOD), N50	TON	3	\$	-
20	40600635	LEVELING BINDER (MACHINE METHOD), N50 1-1/2 INCH	TON	290	\$	-
21	40604060	HOT-MIX ASPHALT SURFACE COURSE, IL-9.5, MIX "D", N50	TON	387	\$	-
22	42001300	PROTECTIVE COAT	SQ YD	1469	\$	-
23	42300400	PORTLAND CEMENT CONCRETE DRIVEWAY PAVEMENT, 8 INCH	SQ YD	431	\$	-
24	42400200C	PORTLAND CEMENT CONCRETE SIDEWALK 5 INCH	SQ FT	1606	\$	-
25	42400210C	PORTLAND CEMENT CONCRETE ADA RAMP 5 INCH	SQ FT	1891	\$	-
26	42400410C	PORTLAND CEMENT CONCRETE SIDEWALK 8 INCH	SQ FT	1674	\$	-
27	42400420C	PORTLAND CEMENT CONCRETE ADA RAMP 8 INCH	SQ FT	120	\$	-
28	42400800C	LINEAR DETECTABLE WARNING TILES (CAST IRON)	SQ FT	212	\$	-
29	42400810C	RADIAL DETECTABLE WARNING TILES (CAST IRON)	SQ FT	0	\$	-
30	44000050C	HOT-MIX ASPHALT SURFACE REMOVAL, VARIABLE DEPTH	SQ YD	0	\$	-
31	44000100	PAVEMENT REMOVAL	SQ YD	4655	\$	-
32	44000300	CURB REMOVAL	FOOT	336	\$	-
33	44000500	COMBINATION CURB AND GUTTER REMOVAL	FOOT	425	\$	-
34	44000600	SIDEWALK REMOVAL	SQ FT	3497	\$	-
35	442Z0200C	SAW CUTTING PAVEMENT	FOOT	229	\$	-
36	550Z0108C	STORM SEWER, EXTRA STRENGTH VITRIFIED CLAY PIPE, TYPE 2, 8 INCH	FOOT	70	\$	-
37	550Z0132C	STORM SEWER, DUCTILE IRON PIPE, TYPE 2, 8 INCH	FOOT	174	\$	-
38	550Z0134C	STORM SEWER, DUCTILE IRON PIPE, TYPE 2, 12 INCH	FOOT	24	\$	-
39	551Z0200C	EXISTING SEWER TO BE REMOVED	FOOT	24	\$	-
40	551Z0400C	SEWER CLEANING AND TELEVISIONING	FOOT	2100	\$	-
41	56100020	DUCTILE IRON WATER MAIN TEE, 8" X 8"	EACH	2	\$	-
42	56105000C	WATER VALVE, 8 INCH	EACH	3	\$	-
43	56109420	DUCTILE IRON WATER MAIN FITTINGS 8" 45.00 DEGREE BEND	EACH	6	\$	-
44	561Z0200C	WATER MAIN INSTALLED IN OPEN CUT, 8 INCH	FOOT	432	\$	-
45	56400500C	REMOVE EXISTING FIRE HYDRANT	EACH	1	\$	-
46	56400600C	HYDRANT INSTALLATION	EACH	1	\$	-
47	56400700	FIRE HYDRANTS (SPECIAL)	EACH	1	\$	-
48	565Z0100C	REMOVE EXISTING VALVE AND VAULT	EACH	1	\$	-
49	*****	RESILIENT WEDGE VALVE 8"	EACH	1	\$	-
50	60200105C	CATCH BASINS, TYPE A, 4'-DIAMETER, TYPE 1 FRAME, OPEN LID (CITY OF CHICAGO)	EACH	10	\$	-
51	60221100C	MANHOLES, TYPE A, 5'-DIAMETER, TYPE 1 FRAME, CLOSED LID (CITY OF CHICAGO)	EACH	3	\$	-
52	60255800C	MANHOLES TO BE ADJUSTED WITH NEW TYPE 1 FRAME, CLOSED LID	EACH	5	\$	-
53	602Z0700C	ADDITIONAL MASONRY	FOOT	1	\$	-
54	604Z0100C	FRAMES	EACH	1	\$	-
55	604Z0200C	LIDS	EACH	1	\$	-
56	60500040C	REMOVING MANHOLES	EACH	0	\$	-
57	60500050C	REMOVING CATCH BASINS	EACH	10	\$	-
58	60500060C	REMOVING INLETS	EACH	0	\$	-
59	60600605	CONCRETE CURB, TYPE B	FOOT	102	\$	-
60	606Z0100C	COMBINATION CONCRETE CURB AND GUTTER, TYPE B-V12	FOOT	1977	\$	-
61	66900200	NON-SPECIAL WASTE DISPOSAL	CU YD	895	\$	-
62	66900530	SOIL DISPOSAL ANALYSIS	EACH	1	\$	-
63	66901001	REGULATED SUBSTANCES PRE-CONSTRUCTION PLAN	L SUM	1	\$	-
64	66901003	REGULATED SUBSTANCES FINAL CONSTRUCTION REPORT	L SUM	1	\$	-
65	66901006	REGULATED SUBSTANCES MONITORING	CAL DAY	20	\$	-

SCHEDULE OF PRICES

CHICAGO DEPARTMENT OF TRANSPORTATION WORKS PROGRESS ADMINISTRATION ("WPA") STREET RECONSTRUCTION

LOCATION: W. 106th St. from S. Christiana Ave. to S. Kedzie Ave.

CDOT PROJECT NO.: B-4-308 PBC PROJECT NO.: 22837

PBC CONTRACT: C1625

Bidder's pricing for each line item should carry its share of the costs of work, plus its share of overhead and profit. Bidders should avoid nominal pricing for some lines and enhanced pricing for other lines.

Bids that the PBC considers to be materially unbalanced will be rejected.

Line	Code Number	Description	Unit	Estimated Quantity	Unit Price	Cost
66	670Z0100C	ENGINEER'S FIELD OFFICE	CAL MO	3		\$ -
67	701Z0300C	TRAFFIC CONTROL COMPLETE	L SUM	1		\$ -
68	701Z0800C	AGGREGATE FOR TEMPORARY ACCESS	TON	214		\$ -
69	*****	CONSTRUCTION SIGN	EACH	2		\$ -
70	720Z0810C	SIGN PANEL, TYPE 1, RETROREFLECTIVE	SQ FT	29		\$ -
71	724Z0100C	REMOVE AND SALVAGE SIGN PANEL	SQ FT	16		\$ -
72	724Z0110C	REMOVE AND SALVAGE SIGN PANEL AND POST ASSEMBLY	EACH	2		\$ -
73	729Z0110C	SIGN SUPPORT POST, DIG METHOD	FOOT	58		\$ -
74	729Z0120C	SIGN SUPPORT POST, DRILL METHOD	FOOT	0		\$ -
75	78000400	THERMOPLASTIC PAVEMENT MARKING - LINE 6"	FOOT	576		\$ -
76	78000650	THERMOPLASTIC PAVEMENT MARKING - LINE 24"	FOOT	57		\$ -
77	799Z0300C	FURNISH AND INSTALL POLE AND BASE	EACH	14		\$ -
78	801Z0100C	MAINTENANCE OF STREET LIGHTING SYSTEM	L SUM	1		\$ -
79	80400200C	ELECTRIC UTILITY SERVICE CONNECTION	EACH	1		\$ -
80	804Z0140C	ELECTRIC SERVICE INSTALLATION, 200 AMP	EACH	1		\$ -
81	810Z0205C	CONDUIT IN TRENCH, GALVANIZED STEEL, 2" DIA.	FOOT	179		\$ -
82	810Z0265C	CONDUIT IN TRENCH, PVC (SCHEDULE 80), 2" DIA.	FOOT	206		\$ -
83	810Z0280C	CONDUIT, DIRECTIONAL BORED, COILABLE NONMETALLIC CONDUIT, SCHEDULE 80, 1 1/4" DIA.	FOOT	0		\$ -
84	810Z0285C	CONDUIT, DIRECTIONAL BORED, COILABLE NONMETALLIC CONDUIT, SCHEDULE 80, 2" DIA.	FOOT	1549		\$ -
85	810Z0300C	TRENCH AND BACKFILL WITH SCREENINGS	FOOT	385		\$ -
86	811Z0210C	CONDUIT RISER ATTACHED TO POLE, 2"	EACH	5		\$ -
87	814Z0120C	HANDHOLE, ELECTRIC, WITH 24" FRAME AND COVER	EACH	5		\$ -
88	814Z0400C	CLEAN EXISTING CITY MANHOLE OR HANDHOLE	EACH	0		\$ -
89	814Z0500C	DRILL EXISTING ELECTRIC HANDHOLE OR MANHOLE	EACH	0		\$ -
90	817Z0220C	ELECTRIC CABLE IN CONDUIT, TRIPLEX, 2-1/C NO. 6, 1-1/C NO. 8 GROUND	FOOT	2381		\$ -
91	81800320	AERIAL CABLE, 3-1/C NO. 4 WITH MESSENGER WIRE	FOOT	350		\$ -
92	818Z0120C	RACK, SECONDARY AERIAL 3 WIRE	EACH	1		\$ -
93	821Z0300C	LUMINAIRE, LED, ACORN, ARTERIAL, RESIDENTIAL	EACH	11		\$ -
94	821Z0860C	LUMINAIRE, LED, COBRA HEAD, RESIDENTIAL	EACH	11		\$ -
95	821Z1300C	LUMINAIRE NODE, INTERNAL	EACH	11		\$ -
96	825Z0200C	CONTROLLER, STREET LIGHTING, POLE MOUNTED, CONSTANT POWER, 1-PHASE, 120/240V, 60A	EACH	3		\$ -
97	83000023C	LIGHT POLE, ALUMINUM, DAVIT, 18 FT. M.H., 8 FT DAVIT ARM	EACH	11		\$ -
98	836Z0210C	LIGHT POLE FOUNDATION, METAL, 10" BOLT CIRCLE, 8 5/8" X 5'	EACH	14		\$ -
99	1593	CABLE ANTI-THEFT DEVICE FOR HELIX FOUNDATION	EACH	14		\$ -
100	84400105	RELOCATE EXISTING LIGHTING UNIT	EACH	3		\$ -
101	895Z0100C	REMOVE EXISTING STREET LIGHTING EQUIPMENT	L SUM	0		\$ -
102	895Z1100C	BREAKDOWN CONCRETE FOUNDATION, LIGHT POLE	EACH	6		\$ -
103	999X0700C	RAILROAD PROTECTIVE LIABILITY INSURANCE	L SUM	0		\$ -
104	999X0900C	DRILL AND GROUT DOWEL AND TIE BARS	EACH	836		\$ -
105	TOTAL FOR 22837/B-4-308 - W. 106th St.					\$ -

SCHEDULE OF PRICES

CHICAGO DEPARTMENT OF TRANSPORTATION WORKS PROGRESS ADMINISTRATION ("WPA") STREET RECONSTRUCTION

LOCATION: W. 107th St. from S. Spaulding Ave. to S. Kedzie Ave.

CDOT PROJECT NO.: B-4-309 PBC PROJECT NO.: 22837

PBC CONTRACT: C1625

Bidder's pricing for each line item should carry its share of the costs of work, plus its share of overhead and profit. Bidders should avoid nominal pricing for some lines and enhanced pricing for other lines.

Bids that the PBC considers to be materially unbalanced will be rejected.

Line	Code Number	Description	Unit	Estimated Quantity	Unit Price	Cost
1	20100110	TREE REMOVAL (6 TO 15 UNITS DIAMETER)	UNIT	15	\$	-
2	20100210	TREE REMOVAL (OVER 15 UNITS DIAMETER)	UNIT	46	\$	-
3	20101100C	TREE PROTECTION	EACH	14	\$	-
4	20101210C	ROOT PRUNING	FOOT	158	\$	-
5	20200100	EARTH EXCAVATION	CU YD	1131	\$	-
6	202Z0200C	EARTH EXCAVATION (SOIL TO CCDD FACILITY)	CU YD	355	\$	-
7	20700220C	POROUS GRANULAR EMBANKMENT, SUBGRADE	CU YD	95	\$	-
8	20800150	TRENCH BACKFILL	CU YD	20	\$	-
9	208Z0200C	TRENCH BACKFILL, WATERMAIN	CU YD	0	\$	-
10	21101615	TOPSOIL FURNISH AND PLACE, 4"	SQ YD	855	\$	-
11	251K0100C	SHREDDED HARDWOOD BARK MULCH	SQ YD	20	\$	-
12	25200110	SODDING, SALT TOLERANT	SQ YD	855	\$	-
13	253T0018C	TREE, ORNAMENTAL, 2.5" - 3.0" CALIPER, BALLED AND BURLAPPED	EACH	0	\$	-
14	253T0028C	TREE, SHADE, 2.5" - 3.0" CALIPER, BALLED AND BURLAPPED	EACH	7	\$	-
15	28000510	INLET FILTERS	EACH	4	\$	-
16	31101400	SUBBASE GRANULAR MATERIAL, TYPE B 6"	SQ YD	2913	\$	-
17	35300200	PORTLAND CEMENT CONCRETE BASE COURSE 7"	SQ YD	2470	\$	-
18	40600290	BITUMINOUS MATERIALS (TACK COAT)	POUND	1869	\$	-
19	40600525	LEVELING BINDER (HAND METHOD), N50	TON	3	\$	-
20	40600635	LEVELING BINDER (MACHINE METHOD), N50 1-1/2 INCH	TON	233	\$	-
21	40604060	HOT-MIX ASPHALT SURFACE COURSE, IL-9.5, MIX "D", N50	TON	310	\$	-
22	42001300	PROTECTIVE COAT	SQ YD	1049	\$	-
23	42300400	PORTLAND CEMENT CONCRETE DRIVEWAY PAVEMENT, 8 INCH	SQ YD	163	\$	-
24	42400200C	PORTLAND CEMENT CONCRETE SIDEWALK 5 INCH	SQ FT	2821	\$	-
25	42400210C	PORTLAND CEMENT CONCRETE ADA RAMP 5 INCH	SQ FT	1510	\$	-
26	42400410C	PORTLAND CEMENT CONCRETE SIDEWALK 8 INCH	SQ FT	786	\$	-
27	42400420C	PORTLAND CEMENT CONCRETE ADA RAMP 8 INCH	SQ FT	120	\$	-
28	42400800C	LINEAR DETECTABLE WARNING TILES (CAST IRON)	SQ FT	144	\$	-
29	42400810C	RADIAL DETECTABLE WARNING TILES (CAST IRON)	SQ FT	59	\$	-
30	44000050C	HOT-MIX ASPHALT SURFACE REMOVAL, VARIABLE DEPTH	SQ YD	300	\$	-
31	44000100	PAVEMENT REMOVAL	SQ YD	3068	\$	-
32	44000300	CURB REMOVAL	FOOT	256	\$	-
33	44000500	COMBINATION CURB AND GUTTER REMOVAL	FOOT	377	\$	-
34	44000600	SIDEWALK REMOVAL	SQ FT	4403	\$	-
35	442Z0200C	SAW CUTTING PAVEMENT	FOOT	370	\$	-
36	550Z0108C	STORM SEWER, EXTRA STRENGTH VITRIFIED CLAY PIPE, TYPE 2, 8 INCH	FOOT	24	\$	-
37	550Z0132C	STORM SEWER, DUCTILE IRON PIPE, TYPE 2, 8 INCH	FOOT	52	\$	-
38	550Z0134C	STORM SEWER, DUCTILE IRON PIPE, TYPE 2, 12 INCH	FOOT	0	\$	-
39	551Z0200C	EXISTING SEWER TO BE REMOVED	FOOT	0	\$	-
40	551Z0400C	SEWER CLEANING AND TELEVISIONING	FOOT	2112	\$	-
41	56100020	DUCTILE IRON WATER MAIN TEE, 8" X 8"	EACH	0	\$	-
42	56105000C	WATER VALVE, 8 INCH	EACH	0	\$	-
43	56109420	DUCTILE IRON WATER MAIN FITTINGS 8" 45.00 DEGREE BEND	EACH	0	\$	-
44	561Z0200C	WATER MAIN INSTALLED IN OPEN CUT, 8 INCH	FOOT	0	\$	-
45	56400500C	REMOVE EXISTING FIRE HYDRANT	EACH	0	\$	-
46	56400600C	HYDRANT INSTALLATION	EACH	0	\$	-
47	56400700	FIRE HYDRANTS (SPECIAL)	EACH	0	\$	-
48	565Z0100C	REMOVE EXISTING VALVE AND VAULT	EACH	0	\$	-
49	*****	RESILIENT WEDGE VALVE 8"	EACH	0	\$	-
50	60200105C	CATCH BASINS, TYPE A, 4'-DIAMETER, TYPE 1 FRAME, OPEN LID (CITY OF CHICAGO)	EACH	4	\$	-
51	60221100C	MANHOLES, TYPE A, 5'-DIAMETER, TYPE 1 FRAME, CLOSED LID (CITY OF CHICAGO)	EACH	0	\$	-
52	60255800C	MANHOLES TO BE ADJUSTED WITH NEW TYPE 1 FRAME, CLOSED LID	EACH	2	\$	-
53	602Z0700C	ADDITIONAL MASONRY	FOOT	1	\$	-
54	604Z0100C	FRAMES	EACH	1	\$	-
55	604Z0200C	LIDS	EACH	1	\$	-
56	60500040C	REMOVING MANHOLES	EACH	0	\$	-
57	60500050C	REMOVING CATCH BASINS	EACH	4	\$	-
58	60500060C	REMOVING INLETS	EACH	0	\$	-
59	60600605	CONCRETE CURB, TYPE B	FOOT	81	\$	-
60	606Z0100C	COMBINATION CONCRETE CURB AND GUTTER, TYPE B-V12	FOOT	1329	\$	-
61	66900200	NON-SPECIAL WASTE DISPOSAL	CU YD	1131	\$	-
62	66900530	SOIL DISPOSAL ANALYSIS	EACH	1	\$	-
63	66901001	REGULATED SUBSTANCES PRE-CONSTRUCTION PLAN	L SUM	1	\$	-
64	66901003	REGULATED SUBSTANCES FINAL CONSTRUCTION REPORT	L SUM	1	\$	-
65	66901006	REGULATED SUBSTANCES MONITORING	CAL DAY	40	\$	-

SCHEDULE OF PRICES

CHICAGO DEPARTMENT OF TRANSPORTATION WORKS PROGRESS ADMINISTRATION ("WPA") STREET RECONSTRUCTION

LOCATION: W. 107th St. from S. Spaulding Ave. to S. Kedzie Ave.

CDOT PROJECT NO.: B-4-309 PBC PROJECT NO.: 22837

PBC CONTRACT: C1625

Bidder's pricing for each line item should carry its share of the costs of work, plus its share of overhead and profit. Bidders should avoid nominal pricing for some lines and enhanced pricing for other lines.

Bids that the PBC considers to be materially unbalanced will be rejected.

Line	Code Number	Description	Unit	Estimated Quantity	Unit Price	Cost
66	670Z0100C	ENGINEER'S FIELD OFFICE	CAL MO	4	\$	-
67	701Z0300C	TRAFFIC CONTROL COMPLETE	L SUM	1	\$	-
68	701Z0800C	AGGREGATE FOR TEMPORARY ACCESS	TON	145	\$	-
69	*****	CONSTRUCTION SIGN	EACH	2	\$	-
70	720Z0810C	SIGN PANEL, TYPE 1, RETROREFLECTIVE	SQ FT	151	\$	-
71	724Z0100C	REMOVE AND SALVAGE SIGN PANEL	SQ FT	7	\$	-
72	724Z0110C	REMOVE AND SALVAGE SIGN PANEL AND POST ASSEMBLY	EACH	15	\$	-
73	729Z0110C	SIGN SUPPORT POST, DIG METHOD	FOOT	161	\$	-
74	729Z0120C	SIGN SUPPORT POST, DRILL METHOD	FOOT	0	\$	-
75	78000400	THERMOPLASTIC PAVEMENT MARKING - LINE 6"	FOOT	125	\$	-
76	78000650	THERMOPLASTIC PAVEMENT MARKING - LINE 24"	FOOT	748	\$	-
77	799Z0300C	FURNISH AND INSTALL POLE AND BASE	EACH	7	\$	-
78	801Z0100C	MAINTENANCE OF STREET LIGHTING SYSTEM	L SUM	1	\$	-
79	80400200C	ELECTRIC UTILITY SERVICE CONNECTION	EACH	2	\$	-
80	804Z0140C	ELECTRIC SERVICE INSTALLATION, 200 AMP	EACH	2	\$	-
81	810Z0205C	CONDUIT IN TRENCH, GALVANIZED STEEL, 2" DIA.	FOOT	68	\$	-
82	810Z0265C	CONDUIT IN TRENCH, PVC (SCHEDULE 80), 2" DIA.	FOOT	97	\$	-
83	810Z0280C	CONDUIT, DIRECTIONAL BORED, COILABLE NONMETALLIC CONDUIT, SCHEDULE 80, 1 1/4" DIA.	FOOT	365	\$	-
84	810Z0285C	CONDUIT, DIRECTIONAL BORED, COILABLE NONMETALLIC CONDUIT, SCHEDULE 80, 2" DIA.	FOOT	557	\$	-
85	810Z0300C	TRENCH AND BACKFILL WITH SCREENINGS	FOOT	243	\$	-
86	811Z0210C	CONDUIT RISER ATTACHED TO POLE, 2"	EACH	0	\$	-
87	814Z0120C	HANDHOLE, ELECTRIC, WITH 24" FRAME AND COVER	EACH	1	\$	-
88	814Z0400C	CLEAN EXISTING CITY MANHOLE OR HANDHOLE	EACH	1	\$	-
89	814Z0500C	DRILL EXISTING ELECTRIC HANDHOLE OR MANHOLE	EACH	2	\$	-
90	817Z0220C	ELECTRIC CABLE IN CONDUIT, TRIPLEX, 2-1/C NO. 6, 1-1/C NO. 8 GROUND	FOOT	1343	\$	-
91	81800320	AERIAL CABLE, 3-1/C NO. 4 WITH MESSENGER WIRE	FOOT	100	\$	-
92	818Z0120C	RACK, SECONDARY AERIAL 3 WIRE	EACH	1	\$	-
93	821Z0300C	LUMINAIRE, LED, ACORN, ARTERIAL, RESIDENTIAL	EACH	6	\$	-
94	821Z0860C	LUMINAIRE, LED, COBRA HEAD, RESIDENTIAL	EACH	6	\$	-
95	821Z1300C	LUMINAIRE NODE, INTERNAL	EACH	6	\$	-
96	825Z0200C	CONTROLLER, STREET LIGHTING, POLE MOUNTED, CONSTANT POWER, 1-PHASE, 120/240V, 60A	EACH	2	\$	-
97	83000023C	LIGHT POLE, ALUMINUM, DAVIT, 18 FT. M.H., 8 FT DAVIT ARM	EACH	6	\$	-
98	836Z0210C	LIGHT POLE FOUNDATION, METAL, 10" BOLT CIRCLE, 8 5/8" X 5'	EACH	7	\$	-
99	1593	CABLE ANTI-THEFT DEVICE FOR HELIX FOUNDATION	EACH	7	\$	-
100	84400105	RELOCATE EXISTING LIGHTING UNIT	EACH	1	\$	-
101	895Z0100C	REMOVE EXISTING STREET LIGHTING EQUIPMENT	L SUM	2018	\$	-
102	895Z1100C	BREAKDOWN CONCRETE FOUNDATION, LIGHT POLE	EACH	3	\$	-
103	999X0700C	RAILROAD PROTECTIVE LIABILITY INSURANCE	L SUM	0	\$	-
104	999X0900C	DRILL AND GROUT DOWEL AND TIE BARS	EACH	663	\$	-
105	TOTAL FOR 22837/B-4-309 - W. 107th St.					\$ -

SCHEDULE OF PRICES

CHICAGO DEPARTMENT OF TRANSPORTATION WORKS PROGRESS ADMINISTRATION ("WPA") STREET RECONSTRUCTION

LOCATION: W. 114th St. from S. Rockwell St. to S. Western Ave.

CDOT PROJECT NO.: B-4-310 PBC PROJECT NO.: 22837

PBC CONTRACT: C1625

Bidder's pricing for each line item should carry its share of the costs of work, plus its share of overhead and profit. Bidders should avoid nominal pricing for some lines and enhanced pricing for other lines.

Bids that the PBC considers to be materially unbalanced will be rejected.

1	20100110	TREE REMOVAL (6 TO 15 UNITS DIAMETER)	UNIT	0	\$	-
2	20100210	TREE REMOVAL (OVER 15 UNITS DIAMETER)	UNIT	0	\$	-
3	20101100C	TREE PROTECTION	EACH	40	\$	-
4	20101210C	ROOT PRUNING	FOOT	354	\$	-
5	20200100	EARTH EXCAVATION	CU YD	1584	\$	-
6	202Z0200C	EARTH EXCAVATION (SOIL TO CCDD FACILITY)	CU YD	1367	\$	-
7	20700220C	POROUS GRANULAR EMBANKMENT, SUBGRADE	CU YD	155	\$	-
8	20800150	TRENCH BACKFILL	CU YD	20	\$	-
9	208Z0200C	TRENCH BACKFILL, WATERMAIN	CU YD	0	\$	-
10	21101615	TOPSOIL FURNISH AND PLACE, 4"	SQ YD	1910	\$	-
11	251K0100C	SHREDDED HARDWOOD BARK MULCH	SQ YD	56	\$	-
12	25200110	SODDING, SALT TOLERANT	SQ YD	1910	\$	-
13	253T0018C	TREE, ORNAMENTAL, 2.5" - 3.0" CALIPER, BALLED AND BURLAPPED	EACH	4	\$	-
14	253T0028C	TREE, SHADE, 2.5" - 3.0" CALIPER, BALLED AND BURLAPPED	EACH	5	\$	-
15	28000510	INLET FILTERS	EACH	2	\$	-
16	31101400	SUBBASE GRANULAR MATERIAL, TYPE B 6"	SQ YD	4647	\$	-
17	35300200	PORTLAND CEMENT CONCRETE BASE COURSE 7"	SQ YD	3921	\$	-
18	40600290	BITUMINOUS MATERIALS (TACK COAT)	POUND	2646	\$	-
19	40600525	LEVELING BINDER (HAND METHOD), N50	TON	4	\$	-
20	40600635	LEVELING BINDER (MACHINE METHOD), N50 1-1/2 INCH	TON	329	\$	-
21	40604060	HOT-MIX ASPHALT SURFACE COURSE, IL-9.5, MIX "D", N50	TON	439	\$	-
22	42001300	PROTECTIVE COAT	SQ YD	1241	\$	-
23	42300400	PORTLAND CEMENT CONCRETE DRIVEWAY PAVEMENT, 8 INCH	SQ YD	191	\$	-
24	42400200C	PORTLAND CEMENT CONCRETE SIDEWALK 5 INCH	SQ FT	2152	\$	-
25	42400210C	PORTLAND CEMENT CONCRETE ADA RAMP 5 INCH	SQ FT	1713	\$	-
26	42400410C	PORTLAND CEMENT CONCRETE SIDEWALK 8 INCH	SQ FT	513	\$	-
27	42400420C	PORTLAND CEMENT CONCRETE ADA RAMP 8 INCH	SQ FT	0	\$	-
28	42400800C	LINEAR DETECTABLE WARNING TILES (CAST IRON)	SQ FT	216	\$	-
29	42400810C	RADIAL DETECTABLE WARNING TILES (CAST IRON)	SQ FT	0	\$	-
30	44000050C	HOT-MIX ASPHALT SURFACE REMOVAL, VARIABLE DEPTH	SQ YD	0	\$	-
31	44000100	PAVEMENT REMOVAL	SQ YD	4836	\$	-
32	44000300	CURB REMOVAL	FOOT	611	\$	-
33	44000500	COMBINATION CURB AND GUTTER REMOVAL	FOOT	400	\$	-
34	44000600	SIDEWALK REMOVAL	SQ FT	3852	\$	-
35	442Z0200C	SAW CUTTING PAVEMENT	FOOT	132	\$	-
36	550Z0108C	STORM SEWER, EXTRA STRENGTH VITRIFIED CLAY PIPE, TYPE 2, 8 INCH	FOOT	65	\$	-
37	550Z0132C	STORM SEWER, DUCTILE IRON PIPE, TYPE 2, 8 INCH	FOOT	0	\$	-
38	550Z0134C	STORM SEWER, DUCTILE IRON PIPE, TYPE 2, 12 INCH	FOOT	0	\$	-
39	551Z0200C	EXISTING SEWER TO BE REMOVED	FOOT	0	\$	-
40	551Z0400C	SEWER CLEANING AND TELEVISIONING	FOOT	2776	\$	-
41	56100020	DUCTILE IRON WATER MAIN TEE, 8" X 8"	EACH	0	\$	-
42	56105000C	WATER VALVE, 8 INCH	EACH	0	\$	-
43	56109420	DUCTILE IRON WATER MAIN FITTINGS 8" 45.00 DEGREE BEND	EACH	0	\$	-
44	561Z0200C	WATER MAIN INSTALLED IN OPEN CUT, 8 INCH	FOOT	0	\$	-
45	56400500C	REMOVE EXISTING FIRE HYDRANT	EACH	0	\$	-
46	56400600C	HYDRANT INSTALLATION	EACH	0	\$	-
47	56400700	FIRE HYDRANTS (SPECIAL)	EACH	0	\$	-
48	565Z0100C	REMOVE EXISTING VALVE AND VAULT	EACH	0	\$	-
49	*****	RESILIENT WEDGE VALVE 8"	EACH	0	\$	-
50	60200105C	CATCH BASINS, TYPE A, 4'-DIAMETER, TYPE 1 FRAME, OPEN LID (CITY OF CHICAGO)	EACH	2	\$	-
51	60221100C	MANHOLES, TYPE A, 5'-DIAMETER, TYPE 1 FRAME, CLOSED LID (CITY OF CHICAGO)	EACH	0	\$	-
52	60255800C	MANHOLES TO BE ADJUSTED WITH NEW TYPE 1 FRAME, CLOSED LID	EACH	12	\$	-
53	602Z0700C	ADDITIONAL MASONRY	FOOT	1	\$	-
54	604Z0100C	FRAMES	EACH	1	\$	-
55	604Z0200C	LIDS	EACH	1	\$	-
56	60500040C	REMOVING MANHOLES	EACH	0	\$	-
57	60500050C	REMOVING CATCH BASINS	EACH	2	\$	-
58	60500060C	REMOVING INLETS	EACH	1	\$	-
59	60600605	CONCRETE CURB, TYPE B	FOOT	0	\$	-
60	606Z0100C	COMBINATION CONCRETE CURB AND GUTTER, TYPE B-V12	FOOT	2538	\$	-
61	66900200	NON-SPECIAL WASTE DISPOSAL	CU YD	1584	\$	-
62	66900530	SOIL DISPOSAL ANALYSIS	EACH	1	\$	-
63	66901001	REGULATED SUBSTANCES PRE-CONSTRUCTION PLAN	L SUM	1	\$	-
64	66901003	REGULATED SUBSTANCES FINAL CONSTRUCTION REPORT	L SUM	1	\$	-
65	66901006	REGULATED SUBSTANCES MONITORING	CAL DAY	60	\$	-

SCHEDULE OF PRICES

CHICAGO DEPARTMENT OF TRANSPORTATION WORKS PROGRESS ADMINISTRATION ("WPA") STREET RECONSTRUCTION

LOCATION: W. 114th St. from S. Rockwell St. to S. Western Ave.

CDOT PROJECT NO.: B-4-310 PBC PROJECT NO.: 22837

PBC CONTRACT: C1625

Bidder's pricing for each line item should carry its share of the costs of work, plus its share of overhead and profit. Bidders should avoid nominal pricing for some lines and enhanced pricing for other lines.

Bids that the PBC considers to be materially unbalanced will be rejected.

66	670Z0100C	ENGINEER'S FIELD OFFICE	CAL MO	6		\$ -
67	701Z0300C	TRAFFIC CONTROL COMPLETE	L SUM	1		\$ -
68	701Z0800C	AGGREGATE FOR TEMPORARY ACCESS	TON	68		\$ -
69	*****	CONSTRUCTION SIGN	EACH	2		\$ -
70	720Z0810C	SIGN PANEL, TYPE 1, RETROREFLECTIVE	SQ FT	159		\$ -
71	724Z0100C	REMOVE AND SALVAGE SIGN PANEL	SQ FT	20		\$ -
72	724Z0110C	REMOVE AND SALVAGE SIGN PANEL AND POST ASSEMBLY	EACH	16		\$ -
73	729Z0110C	SIGN SUPPORT POST, DIG METHOD	FOOT	311		\$ -
74	729Z0120C	SIGN SUPPORT POST, DRILL METHOD	FOOT	11		\$ -
75	78000400	THERMOPLASTIC PAVEMENT MARKING - LINE 6"	FOOT	0		\$ -
76	78000650	THERMOPLASTIC PAVEMENT MARKING - LINE 24"	FOOT	514		\$ -
77	799Z0300C	FURNISH AND INSTALL POLE AND BASE	EACH	14		\$ -
78	801Z0100C	MAINTENANCE OF STREET LIGHTING SYSTEM	L SUM	1		\$ -
79	80400200C	ELECTRIC UTILITY SERVICE CONNECTION	EACH	1		\$ -
80	804Z0140C	ELECTRIC SERVICE INSTALLATION, 200 AMP	EACH	1		\$ -
81	810Z0205C	CONDUIT IN TRENCH, GALVANIZED STEEL, 2" DIA.	FOOT	36		\$ -
82	810Z0265C	CONDUIT IN TRENCH, PVC (SCHEDULE 80), 2" DIA.	FOOT	0		\$ -
83	810Z0280C	CONDUIT, DIRECTIONAL BORED, COILABLE NONMETALLIC CONDUIT, SCHEDULE 80, 1 1/4" DIA.	FOOT	2809		\$ -
84	810Z0285C	CONDUIT, DIRECTIONAL BORED, COILABLE NONMETALLIC CONDUIT, SCHEDULE 80, 2" DIA.	FOOT	0		\$ -
85	810Z0300C	TRENCH AND BACKFILL WITH SCREENINGS	FOOT	157		\$ -
86	811Z0210C	CONDUIT RISER ATTACHED TO POLE, 2"	EACH	2		\$ -
87	814Z0120C	HANDHOLE, ELECTRIC, WITH 24" FRAME AND COVER	EACH	0		\$ -
88	814Z0400C	CLEAN EXISTING CITY MANHOLE OR HANDHOLE	EACH	1		\$ -
89	814Z0500C	DRILL EXISTING ELECTRIC HANDHOLE OR MANHOLE	EACH	2		\$ -
90	817Z0220C	ELECTRIC CABLE IN CONDUIT, TRIPLEX, 2-1/C NO. 6, 1-1/C NO. 8 GROUND	FOOT	3254		\$ -
91	81800320	AERIAL CABLE, 3-1/C NO. 4 WITH MESSENGER WIRE	FOOT	129		\$ -
92	818Z0120C	RACK, SECONDARY AERIAL 3 WIRE	EACH	3		\$ -
93	821Z0300C	LUMINAIRE, LED, ACORN, ARTERIAL, RESIDENTIAL	EACH	15		\$ -
94	821Z0860C	LUMINAIRE, LED, COBRA HEAD, RESIDENTIAL	EACH	15		\$ -
95	821Z1300C	LUMINAIRE NODE, INTERNAL	EACH	15		\$ -
96	825Z0200C	CONTROLLER, STREET LIGHTING, POLE MOUNTED, CONSTANT POWER, 1-PHASE, 120/240V, 60A	EACH	1		\$ -
97	83000023C	LIGHT POLE, ALUMINUM, DAVIT, 18 FT. M.H., 8 FT DAVIT ARM	EACH	15		\$ -
98	836Z0210C	LIGHT POLE FOUNDATION, METAL, 10" BOLT CIRCLE, 8 5/8" X 5'	EACH	16		\$ -
99	1593	CABLE ANTI-THEFT DEVICE FOR HELIX FOUNDATION	EACH	16		\$ -
100	84400105	RELOCATE EXISTING LIGHTING UNIT	EACH	1		\$ -
101	895Z0100C	REMOVE EXISTING STREET LIGHTING EQUIPMENT	L SUM	0		\$ -
102	895Z1100C	BREAKDOWN CONCRETE FOUNDATION, LIGHT POLE	EACH	7		\$ -
103	999X0700C	RAILROAD PROTECTIVE LIABILITY INSURANCE	L SUM	1		\$ -
104	999X0900C	DRILL AND GROUT DOWEL AND TIE BARS	EACH	1087		\$ -
105			TOTAL FOR 22837/B-4-310 - W. 114th St.			\$ -

**ELECTRICAL SPECIFICATION 1593
DIVISION OF ENGINEERING
DEPARTMENT OF TRANSPORTATION
CITY OF CHICAGO
REVISED FEBRUARY 11, 2015**

**CABLE ANTI-THEFT DEVICE
FOR HELIX FOUNDATIONS**

SUBJECT

1. This specification covers the requirements for a cable anti-theft device to be used with steel helix foundations with either ten inch diameter bolt circles or fifteen inch diameter bolt circles. The device will secure the cable so as to prevent removal of the cable without removing the pole first.

GENERAL

2. (a) Specifications. The devices must conform in detail to the requirements herein stated and to the specifications and methods of test of the American Society for Testing and Materials cited by ASTM Designation Number of which the most recently published revision will govern.
- (b) Acceptance. Devices not conforming to this specification will not be accepted.
- (c) Drawings. The drawing mentioned herein is a drawing of the Department of Transportation, and is an integral part of this specification.
- (d) Bidders Drawings. If requested, the apparent low bidder must submit detailed scale drawings of the device showing actual dimensions, details, and welds. Shop drawings must be original engineering drawings created by the manufacturer. The drawings must give every dimension necessary to show how the device will function. These drawings must be submitted in electronic format, preferably Microstation 95, if so requested by the City.
- (e) Sample. One complete device of the manufacture intended to be furnished must be submitted within fifteen (15) business days upon request of the Chief Procurement Officer.
- (f) Warranty. The manufacturer must warrant the performance and construction of the devices to meet the requirements of this specification and must warrant all parts, components, and appurtenances against defects due to design, workmanship, or material developing within a period of three years after the

devices have been delivered. This will be interpreted particularly to mean structural or mechanical failure of any element or weld, or failure of any portion of the painting system. The warranty must be furnished in writing guaranteeing material replacement including shipment, free of charge to the City. The Commissioner will be the sole judge in determining which replacements are to be made and the Commissioner's decision will be final.

DESIGN

3. (a) Material. Steel must meet or exceed the requirements of ASTM A36.
- (b) Construction. Each device must be dimensioned as shown on Standard Drawing 982. All parts shown on the standard drawing must be supplied as part of this specification.

The device must be powder coated silver or black, as directed on the order.

The clamping device shall be constructed so that cables can only be clamped or un-clamped when the pole is not in place. When the pole is in place the clamping mechanism shall not be accessible. The clamping device can only be installed after the cable is pulled and before the pole is set. When installed, the device and the clamping mechanism shall have a great enough strength that when a pulling force is applied to the cable, the cable will break before it will slip through the device.

Any similar device, other than that shown in Standard Drawing 982, may be considered. The City will be the final judge as to whether a device meets the intent of this specification.

WELDING

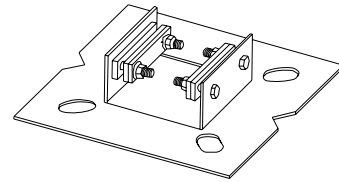
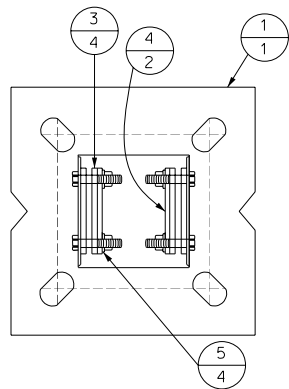
4. (a) Standards. Every weld must be made in conformity with the American Welding Society. If so requested, the apparent low bidder must submit a drawing showing the sizes and types of welds, must state the type of electrode, and must describe the welding methods he proposes to employ in fabricating the devices.

TESTING

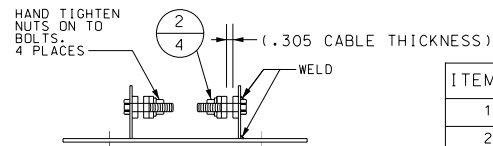
5. (a) The welds must be inspected for penetration and soundness by the magnetic particle inspection method or by radiography. If the magnetic inspection process is used, the dry method with direct current must be employed.
- (b) The manufacturer must certify the type of steel used to form the devices.

PACKAGING

6. (a) General. The devices must be packaged so as not to incur any damage during shipping and unloading. Materials such as lumber (2"x4" min.), non-marring banding, and other appropriate bundling materials must be used to make a rigid, long lasting, bundle capable of being handled , shipped and stored without shifting or breaking of the contents. Each bundle must be capable of being lifted by a fork lift truck and the bundles must be shipped in a flat bed truck to facilitate unloading.
- (b) All devices will be delivered to the Division of Electrical Operations storage yard at 1539 South Ashland Avenue in Chicago, or to another location within the City as indicated on the order.

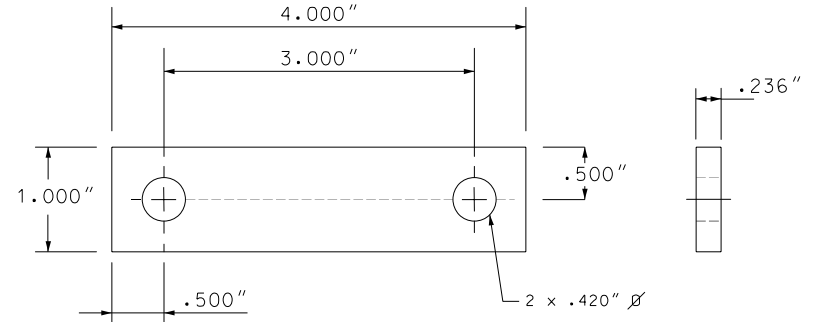


POWDER COAT SILVER OR BLACK



ANTI THEFT PLATE ASSEMBLY

ITEM #	QTY	DESCRIPTION
1	1	ANTI THEFT PLATE W/ WELDED STUDS
2	4	3/8 - 16 SS NUT
3	4	GASKET
4	2	ANTI THEFT BAR
5	4	WASHER



ANTI THEFT BAR

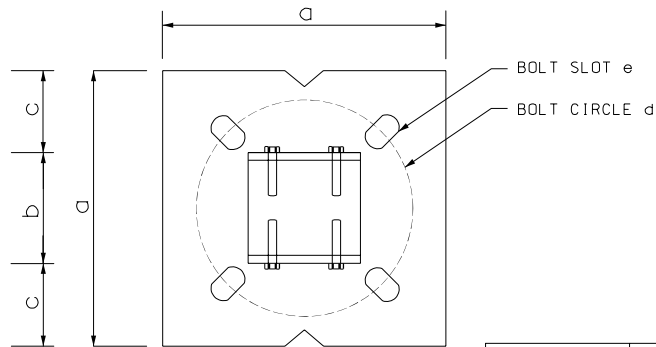
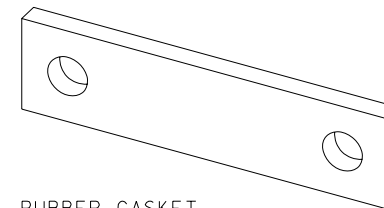
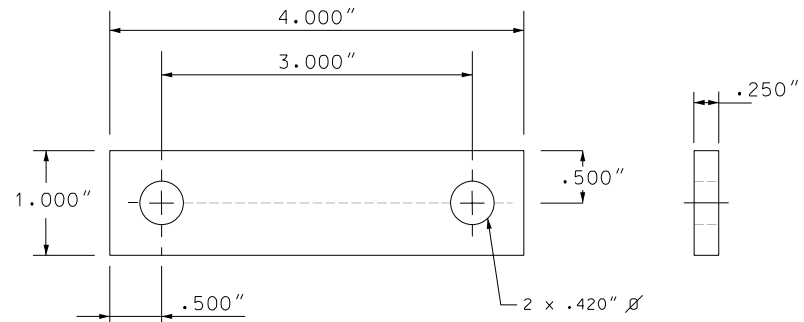
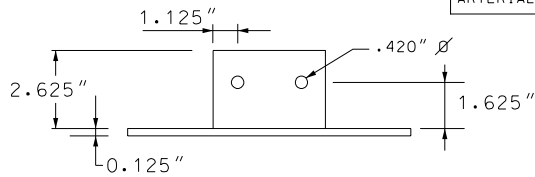


PLATE DIMENSIONS	a	b	c	d	e
RESIDENTIAL	11"	5.25"	2.875"	10"-11"	1.25" x 1.75"
ARTERIAL	14"	5.25"	4.375"	14"-15"	1.40" x 2.00"



RUBBER GASKET



A	DATE	REVISION
CABLE ANTI-THEFT DEVICE FOR HELIX FOUNDATIONS		
CITY OF CHICAGO DEPARTMENT OF TRANSPORTATION DIVISION OF ENGINEERING		
DRAFTSMAN/ENGINEER :	G.M.PADIYAR	DWG. NO. 982
SUP. ENGINEER/PM :	O.LETAMENDI	
PROFESSIONAL ENGINEER :	R.POOL	
ENGINEER OF ELECTRICITY:		
DEPUTY COMMISSIONER:		
SIZE: 16" 22"	SCALE: NONE	DATE: 01/27/2015