



ADDENDUM

ADDENDUM NO.: 03
PROJECT NAME: WPA Street Reconstruction (E 109th St., S Hoyne Ave., S Harding Ave., E 102nd St.)
PROJECT NO.: 22312, 22313, 22314, and 22329
CONTRACT NO.: C1616
DATE OF ISSUE: December 2, 2024

NOTICE OF CHANGES, MODIFICATIONS, OR CLARIFICATIONS TO CONTRACT DOCUMENTS

The following changes, modifications, or clarifications are hereby incorporated and made an integral part of the Contract Documents. Unless clearly expressed otherwise by this Addendum, all terms and conditions defined in the original Contract Documents shall continue in full force and effect and shall have the same meaning in this Addendum. Issued Addenda represent responses/clarifications to various inquiries. Contractors shall be responsible for including all associated labor/material costs in its bid. Drawings/specifications corresponding to inquiry responses will be issued with the Issue for Construction Documents, upon issuance of building permit.

ITEM NO. 1: CHANGE TO KEY DATES
None.

ITEM NO. 2: REVISIONS TO BOOK 1 – PBC INSTRUCTIONS TO BIDDERS

Change 1 Book 1 – **INSERT** Updated Schedule of Prices following Page 17 “(D) SCHEDULE OF PRICES”. The following Line Items were updated:

East 109th Street

1. 670Z0100C – Engineer’s Field Office
2. 701Z0800C – Aggregate for Temporary Access

South Hoyne Avenue

1. 670Z0100C – Engineer’s Field Office

South Harding Avenue

1. 670Z0100C – Engineer’s Field Office

East 102nd Street

1. 670Z0100C – Engineer’s Field Office

NOTE: Updated Fillable Master Bid Form (Excel version) is available from [Cross Rhodes Reprographics](#) the [PBC Current Opportunities Page](#), as well as the PBC Alert communication.

ITEM NO. 3: REVISIONS TO BOOK 2 – PBC STANDARD TERMS AND CONDITIONS
None.

ITEM NO. 4: REVISIONS TO BOOK 3 – TECHNICAL SPECIFICATIONS

Change 1 Book 3 – **REVISED** Table of Contents.

a. Added Line 97 – 821Z0860C – Luminaire, LED, Cobra Head, Residential.

Change 2 Book 3 – **ADDED** Specification Item 97 – 821Z0860C – Luminaire, LED, Cobra Head, Residential.

ITEM NO. 5: REVISIONS TO DRAWINGS

Change 1 **DELETE** SHEET 3 for E. 109th; S. Hoyne; S. Harding; and E. 102nd; and **REPLACE** with Revised SHEET 3 for E. 109th; S. Hoyne; S. Harding; and E. 102nd; included in this Addendum No. 3. – *Unit quantities updated as indicated on each sheet.*

Change 2 **DELETE** SHEET 1 for E. 102nd and **REPLACE** with Revised SHEET 1 included in this Addendum No. 3 – *Updated Index of Drawings*

Change 3 ADD SHEET 31A CDWM Sewer Detail for E. 102nd

Change 4 ADD SHEET 31B CDWM Sewer Detail for E. 102nd

ITEM NO. 6: REQUESTS FOR INFORMATION

RFI-1.

Question: The schedule of values for each location lists a pay item for an Engineer's Field Office, 2 locations for 6 Months and the other 2 for 3 months each. Please confirm if we will be required to set up an engineer's field office at each of the 4 locations, or if one single location is acceptable for this project.

Response: At a minimum, two (2) field offices are required, one (1) field office for both E. 109th & E. 102nd at a location to be reviewed and approved by Commission and CDOT, and one (1) field office for both S. Hoyne & S. Harding at a location to be reviewed and approved by the Commission and CDOT. The Contractor shall be responsible for providing and maintaining the field offices from issuance of the NTP through Substantial Completion. A revised Schedule of Prices is included in this Addendum No. 3.

RFI-2.

Question: Will we be allowed to close each of the 4 streets to traffic in order to complete the project? Please provide traffic control plans with acceptable phasing if this is not possible or allowed as this will greatly impact contractor pricing.

Response: Specific traffic control plans are not included in the Contract Documents. The final traffic plans will require coordination upon submittal of the Contractor's proposed Phasing and Logistics Plans. Upon completion and acceptance of the Milestone 1 Work, the Contractor may close streets as approved. The Contractor shall be responsible for any/all costs for proper street closures, including signage and maintenance. Prior to implementing any street closures, the Contractor shall submit its Project Phasing and Logistics Plan for each street for review and approval by CDOT and the Commission. At a minimum, the Contractor's Phasing and Logistics Plan shall include any proposed street closures, including Project name/street, proposed closure durations, temporary protection and barricades, traffic and sidewalk closures, and construction and directional signage, etc. The Contractor shall maintain access throughout the Project duration for any adjacent businesses including, but not limited to "J&L Auto Body" at the South Harding Project, and cross intersections at any/all locations for through traffic.

This Addendum includes the following attached Specifications and/or Documents:

1. [Updated Fillable Master Bid Form](#)
2. Book 3 – Revised TABLE OF CONTENTS, page vi, issue date 12/2/2024.
3. Book 3 – Added Specification Item 97 – 821Z0860C – Luminaire, Led, Cobra Head, Residential, issue date 12/2/2024.

This Addendum includes the following attached Drawings:

1. Sheet 1, E. 102nd Street
2. Sheet 3, E. 109th Street
3. Sheet 3, S. Hoyne Avenue
4. Sheet 3, S. Harding Avenue
5. Sheet 3, E. 102nd Street
6. Sheet 31A – E. 102nd Street
7. Sheet 31B - E. 102nd Street

END OF ADDENDUM NO. 03

BOOK 3 – DETAILED SPECIFICATIONS

TABLE OF CONTENTS

WPA Street Improvement Program

E. 109th Street from S. Burley Ave to S Ave O
 CDOT Project No. B-4-312/ PBC Project No. 22312
 S. Hoyne Avenue from W. 52nd Place to Dead End
 CDOT Project No. B-4-313/PBC Project No. 22313
 S. Harding Avenue from W. 24th Street to Dead End
 CDOT Project No. B-4-314/ PBC Project No. 22314
 E. 102nd Street from Dead End to S. Commercial Ave
 CDOT Project No. B-4-329/ PBC Project No. 22329

82	895Z0100C	REMOVE EXISTING STREET LIGHTING EQUIPMENT	Y	DS-91
83	895Z1100C	BREAKDOWN CONCRETE FOUNDATION, LIGHT POLE	Y	DS-92
84	*****	POLE, ANCHOR BASE, RELOCATE COMPLETE	Y	DS-93
85	*****	WIRE, TEMPORARY AERIAL, 3-1/C No.8 ALUMINUM	Y	DS-94
86	66900530	SOIL DISPOSAL ANALYSIS	Y	DS-95
87	66901001	REGULATED SUBSTANCES PRE-CONSTRUCTION PLAN	Y	DS-95
88	66901003	REGULATED SUBSTANCES FINAL CONSTRUCTION REPORT	Y	DS-95
89	66901006	REGULATED SUBSTANCES MONITORING	Y	DS-95
90	66900200	NON-SPECIAL WASTE DISPOSAL	Y	DS-95
91	*****	TEMPORARY CONCRETE BARRIER (TO REMAIN)	Y	DS-109
92	*****	PLUG EXISTING SEWER	Y	DS-110
93	699Z1400C	CATCH BASINS, MANHOLES, WATER VALVES, ROUNDWAYS AND INLETS TO BE CLEANED	Y	DS-111
94	54248510	CONCRETE COLLARS	Y	DS-112
95	551Z0200C	EXISTING SEWER TO BE REMOVED	Y	DS-113
96	60500040C	REMOVING MANHOLES	Y	DS-114
97	821Z0860C	LUMINAIRE, LED, COBRA HEAD, RESIDENTIAL	Y	DS-115

Addendum 01,
11/25/24

E. 109th Street from S. Burley Ave to S Ave O
CDOT Project No. B-4-312/ PBC Project No. 22312
S. Hoyne Avenue from W. 52nd Place to Dead End
CDOT Project No. B-4-313/ PBC Project No. 22313
S. Harding Avenue from W. 24th Street to Dead End
CDOT Project No. B-4-314/ PBC Project No. 22314
E. 102nd Street from Dead End to S. Commercial Ave
CDOT Project No. B-4-329/ PBC Project No. 22329

ITEM No.97 – 821Z0860C - LUMINAIRE, LED, COBRA HEAD, RESIDENTIAL

Revised: 6/16/2022

Material Specifications: 1351, 1608, 1609, 1627, 1628, 1629

Standard Drawings: none

Description. This item shall consist of furnishing and installing a LED street light luminaire of the output noted on the plans with external smart node.

Materials. Luminaires shall meet the requirements of Material Specification 1609, 1627, 1628, 1629. External smart lighting nodes shall meet the requirements of Material Specification 1608. Pole wire shall meet the requirements of Material Specification 1351.

Installation. This work shall meet the applicable requirements of Sections 801 and 821.03 of the Standard Specifications. Each luminaire shall be installed per the manufacturer's instructions. Luminaires shall be securely attached to the end of a two-inch diameter pipe arm and leveled to provide proper illumination.

Pole wiring shall be connected to the luminaire terminal block, or quick disconnect, in accordance with the Material Specifications and the manufacturer's recommendation. Pole wires shall be spliced to the field wires at the base of the pole using splicing methods approved by the Engineer, and as detailed under related special provisions. The pole wires shall be of sufficient length to connect the luminaire to the field wires at the base of the pole.

Basis of Payment. This work will be paid for at the contract unit price per each for LUMINAIRE, LED, COBRA HEAD, RESIDENTIAL.

Addendum 01,
11/25/24

UTILITY NOTES (CONT.)

- THE USE OF CONCRETE, FLOW FILL, OR THE LIKE IS PROHIBITED WITHIN 24 INCHES OF ALL GAS FACILITIES, NOR SHALL IT ENCASE ANY GAS FACILITY. A BUFFER OF 24" SAND IS TO BE USED BETWEEN FLOW FILL AND ALL GAS FACILITIES. A MINIMUM OF 6" FA-02 OR FM-02 SAND SHALL BE USED WHEN BACKFILLING OTHER MATERIALS AROUND ANY EXPOSED GAS FACILITY. CONTRACTOR EXPOSING GAS FACILITY IS RESPONSIBLE FOR PROVIDING THE SAND. ANY DAMAGES TO PEOPLES GAS FACILITIES SHALL BE THE RESPONSIBILITY OF THE INSTALLING UTILITY AND THEIR CONTRACTOR(S). CALL 866-556-6002 IMMEDIATELY FOR ANY DAMAGES TO THE GAS FACILITIES. VERTICAL ADJUSTMENTS REQUIRED FOR VALVE BASIN FRAMES, COVERS, GAS SHUT-OFF VALVES, ROADWAY BOXES SHALL BE COMMUNICATED TO RANDY PEREZ, PLANNING-PERMIT GROUP, RANDY.PEREZ@PEOPLES GASDELIVERY.COM, 4 WEEKS PRIOR TO THE START OF RESTORATION FOR PLANNING & SCHEDULING. ALL GAS FACILITIES ARE TO BE MAINTAINED.
- PEOPLES GAS CAST IRON AND DUCTILE IRON GAS MAINS MAY REQUIRE SUPPORT DURING CONSTRUCTION AND RELATED EXCAVATION ACTIVITIES. ANY EXPOSED JOINTS MUST BE SUPPORTED AND CAST IRON JOINTS SEALED BY GAS COMPANY PERSONNEL. CONTACT THE LOCAL PGL SHOP ENGINEERING SUPERVISOR, A MINIMUM OF 5 BUSINESS DAYS PRIOR TO EXCAVATION TO SET UP ON-SITE INSPECTION. INSPECTION BY PEOPLES GAS IS REQUIRED PRIOR TO BACKFILL. INSPECT GAS MAIN AND COATING INTEGRITY PRIOR TO BACKFILL.

ADA NOTES

- FOR THE LATEST CITY OF CHICAGO ADA REQUIREMENTS FOR THE PLANS GO TO WWW.CITYOFCHICAGO.ORG.

LANDSCAPING NOTES

- THE CONTRACTOR IS REQUIRED TO OBTAIN A PERMIT TO REMOVE, PLANT, SPRAY, OR IN ANY WAY AFFECT THE GENERAL HEALTH OR STRUCTURE OF TREES IN THE PUBLIC WAY. THIS PERMIT MAY BE OBTAINED FROM THE DEPUTY COMMISSIONER OF CITY OF CHICAGO BUREAU OF FORESTRY.
- TREES MUST BE TAGGED BY C.D.O.T. CONTACT JEFF BRINK AT (312) 744-7844.

DEPT. OF WATER MANAGEMENT NOTES

- THE CONTRACTOR IS RESPONSIBLE FOR THE ADEQUATE PROTECTION OF THE EXISTING SEWERS, DRAIN CONNECTIONS, SEWER STRUCTURES, AND BENCH MONUMENTS DURING CONSTRUCTION OPERATIONS, AND THE USE OF HEAVY EQUIPMENT WITHIN THE LIMITS OF THE PROJECT.
- IT IS THE RESPONSIBILITY OF THE UTILITY COMPANY/GOVERNMENT AGENCY AND ITS CONSULTANTS/CONTRACTORS TO OBTAIN THE NECESSARY BACKGROUND INFORMATION FROM THE DRAWINGS/CONTRACT PLANS AND FOR EXISTING FACILITIES PROTECTION DURING THE CONSTRUCTION STAGE. RECORDS FROM THE DEPARTMENT OF BUILDINGS, SEWER UNIT INCLUDE: EXISTING SEWERS, DRAIN CONNECTIONS, SEWER STRUCTURES, BENCH MONUMENT LOCATIONS, ORDINANCE GRADES, AGE OF SEWER, AND PIPE MATERIAL. COPIES OF SEWER RECORDS CAN BE OBTAINED ON PAYMENT TO THE DEPARTMENT OF BUILDINGS, SEWER UNIT, LOCATED AT CITY HALL, 121 N. LASALLE ST. ROOM 900, CHICAGO, IL 60602.
- A PERMIT IS REQUIRED FROM THE DEPARTMENT OF BUILDINGS, SEWER UNIT PRIOR TO THE CONSTRUCTION OF, OR REPAIRS TO, UNDERGROUND SEWERS, DRAIN CONNECTIONS, OR SEWER STRUCTURES, INCLUDING THE ADJUSTMENT OF SEWER STRUCTURES AND THE REMOVAL/REPLACEMENT OF FRAMES AND LIDS. THE PERMIT MUST BE OBTAINED BY A DRAINLAYER CURRENTLY LICENSED FROM THE DEPARTMENT OF BUILDINGS, SEWER UNIT.
- IN ORDER TO PROTECT THE CITY'S BENCH MONUMENTS, ALL BENCH MONUMENT LOCATIONS WITHIN THE LIMITS OF THE PROJECT SHOULD BE LISTED ON THE PLAN SHEETS. IF ANY BENCH MONUMENTS ARE NOT LOCATED OR IF DAMAGE TO ANY BENCH MONUMENTS IS ENCOUNTERED, PLEASE CONTACT THE DEPARTMENT OF WATER MANAGEMENT IMMEDIATELY AT (312) 747-7892 OR (312) 747-7893. THE CONTRACTOR IS RESPONSIBLE FOR THE COST OF REPLACEMENT OF ANY BENCH MONUMENT DAMAGED OR DESTROYED DURING CONSTRUCTION.
- IN THE RELOCATION OR CONSTRUCTION OF PRIVATE OR PUBLIC UTILITIES, INCLUDING PIPE UNDERDRAINS AND/OR SUBDRAINS, THE UTILITY SHOULD BE LOCATED AS FAR AWAY AS POSSIBLE FROM THE DEPARTMENT OF WATER MANAGEMENT FACILITY. A MINIMUM DISTANCE OF THE OUTSIDE DIAMETER OF THE SEWER (O.D.) PLUS 4 FEET MUST BE MAINTAINED BETWEEN THE SEWER AND THE UTILITY CENTER LINES. IF THE OUTSIDE DIAMETER/WIDTH OF UTILITY CONDUIT IS MORE THAN THE SEWER O.D., A MINIMUM OF 4 FEET HORIZONTAL CLEARANCE MUST BE OBTAINED FROM THE OUTSIDE FACE TO OUTSIDE FACE. FOUR FEET HORIZONTAL CLEARANCE IS ALSO REQUIRED FROM ALL SEWER STRUCTURES. A MINIMUM OF 10 FEET HORIZONTAL CLEARANCE AND 18 INCHES VERTICAL CLEARANCE IS DESIRABLE BETWEEN THE SEWER AND A WATER MAIN.
- MANHOLES, CATCH BASINS, AND INLETS MUST BE PROTECTED FROM THE ENTRY OF ASPHALT/DEBRIS INTO THE SEWER SYSTEM DURING CONSTRUCTION. THE CONTRACTOR WILL MARK LOCATIONS OF ALL SEWER STRUCTURES ON THE SIDEWALK BEFORE STARTING PAVEMENT REMOVAL/REPLACEMENT. ADJUSTMENT OF FRAMES AND LIDS OF SEWER STRUCTURES MUST BE COMPLETED PRIOR TO STREET RESURFACING.
- THE UTILITY COMPANY/GOVERNMENT AGENCY OR ITS REPRESENTING CONTRACTOR MUST MAINTAIN ACCESS TO THE EXISTING SEWER FACILITIES, INCLUDING SEWER STRUCTURES, AT ALL TIMES AND COORDINATE THE PROPOSED IMPROVEMENTS WITH THE DEPARTMENT OF WATER MANAGEMENT ENGINEER/INSPECTOR TO AVOID ANY INTERRUPTION OF THE SEWER FACILITIES' MAINTENANCE OR SERVICES. THE SEWER FLOW MUST BE MAINTAINED AT ALL TIMES.
- THE CONTRACTOR MUST LOCATE AND PROMPTLY AND PROPERLY CONNECT TO THE NEW SEWERS ALL LIVE HOUSE DRAINS, CATCH BASIN DRAINS, AND OTHER EXISTING LATERALS, DRAINS, AND SEWERS OF WHATEVER NATURE WHICH ARE CONNECTED TO THE EXISTING SEWERS BEING REPAIRED OR REPLACED.
- EXISTING CATCH BASIN LATERALS TO BE REUSED MUST BE RODDED AND FLUSHED IN THE PRESENCE OF THE DEPARTMENT OF WATER MANAGEMENT INSPECTOR. A NEW CONNECTION TO THE MAIN SEWER IS REQUIRED IF THE EXISTING CATCH BASIN LATERAL IS NOT APPROVED BY THE SEWER INSPECTOR.
- WHEN A SEWER STRUCTURE IS ABANDONED, ALL PIPE OPENINGS MUST BE PLUGGED, STRUCTURES FILLED WITH TRENCH BACKFILL, LIDS AND FRAMES REMOVED, AND SURFACE RESTORED AS PER THE DEPARTMENT OF WATER MANAGEMENT STANDARDS AND SPECIFICATIONS.
- WHEN DIRECTED BY THE COMMISSIONER, THE CONTRACTOR IS REQUIRED TO REPLACE ANY BROKEN FRAMES AND LIDS OF SEWER STRUCTURES WITH THE DEPARTMENT OF WATER MANAGEMENT STANDARD FRAMES AND LIDS.
- THE FRAMES AND LIDS OF SEWER STRUCTURES TO BE ABANDONED, REMOVED, OR FILLED SHOULD BE SALVAGED, AND THE CONTRACTOR MUST NOTIFY THE DEPARTMENT OF WATER MANAGEMENT FOR PICK UP.
- IN ARTERIAL STREETS, PERFORATED LIDS MUST BE PLACED ON ALL SEWER STRUCTURES UNLESS OTHERWISE APPROVED BY THE COMMISSIONER. IN RESIDENTIAL STREETS, MANHOLES MAY REQUIRE CLOSED LIDS. CONTRACTOR TO COORDINATE WITH THE DEPARTMENT OF WATER MANAGEMENT INSPECTOR.
- DURING CONSTRUCTION OF THIS PROJECT, THE CONTRACTOR SHALL MAINTAIN THE SURFACE DRAINAGE OF THE ROAD AT ALL TIMES.
- IF THE CONDITION OF EXISTING CATCH BASINS OR INLETS IS SUCH THAT THEIR ADJUSTMENT IS NOT FEASIBLE AT THE TIME OF CONSTRUCTION, THE CONTRACTOR MUST FURNISH AND INSTALL NEW CATCH BASINS OR INLETS AND THEIR APPURTENANCES AS DIRECTED BY THE COMMISSIONER AND WITH THE CONCURRENCE OF THE DEPARTMENT OF WATER MANAGEMENT. THIS WORK WILL BE PAID FOR AT THE CONTRACT UNIT PRICE EACH FOR 'CATCH BASINS, TYPE A, 4 FT DIAMETER, TYPE 1 FRAME, OPEN LID (CITY OF CHICAGO)' OR FOR 'INLETS, TYPE A, TYPE 1 FRAME, OPEN LID (CITY OF CHICAGO)'.
 17. THE CONTRACTOR SHALL VERIFY THE LOCATION OF ALL PROPOSED WATER SERVICE CONNECTIONS. THE CITY OF CHICAGO, DEPARTMENT OF WATER MANAGEMENT WILL PERFORM THE WATER SERVICE CONNECTION TO THE EXISTING WATER MAIN. IT SHALL BE THE CONTRACTOR'S RESPONSIBILITY TO OBTAIN ALL NECESSARY PERMITS AND PAY THE ASSOCIATED FEES. ALL PERMIT FEES WILL BE CONSIDERED INCIDENTAL TO THE CONTRACT.
 18. IN CASE OF DAMAGE TO THE CITY'S SEWER SYSTEM, PRIVATE AND PUBLIC DRAIN CONNECTIONS, AND/OR BENCH MONUMENTS, THE CONTRACTOR MUST CONTACT THE DEPARTMENT OF BUILDINGS, SEWER UNIT, IMMEDIATELY AT PHONE NUMBER (312) 744-3351. THE CONTRACTOR MUST, AT HIS/HER OWN COST, REPLACE THE AFFECTED SEWERS, DRAIN CONNECTIONS, SEWER STRUCTURES AND/OR BENCH MONUMENTS AS NECESSARY. THE SEWER FLOWS MUST BE MAINTAINED AT ALL TIMES.
 19. FLOW RESTRICTORS MUST BE INSTALLED IN ALL CATCH BASINS, OUTSIDE OF THE CENTRAL BUSINESS DISTRICT. FLOW RESTRICTORS MUST NOT BE INSTALLED IN CLOSE PROXIMITY TO VIADUCT AREAS, BUS STOPS, OR EMERGENCY ENTRANCES. FLOW RESTRICTORS ARE AVAILABLE FOR PICK-UP AT THE DWM'S CENTRAL DISTRICT, LOCATED AT 3901 S. ASHLAND AVENUE, BY CALLING (312) 747-1777, BETWEEN 7:00 AM - 3:00 PM, 48 HOURS IN ADVANCE.
 20. AS-BUILT PLANS MUST BE SUBMITTED SOON AFTER WORK COMPLETION. FINAL PAYMENT WILL NOT BE MADE TO THE CONTRACTOR UNTIL THE SEWER UNIT OF THE DWM ACKNOWLEDGES RECEIPT OF "AS-BUILT PLANS".
 21. IN CASE OF DAMAGE TO THE CITY OF CHICAGO SEWERS, PRIVATE AND PUBLIC DRAINS, SEWER STRUCTURES AND/OR BENCH MONUMENTS, THE CONTRACTOR SHALL IMMEDIATELY CONTACT THE DEPARTMENT OF WATER MANAGEMENT AT (312) 747-7892 OR (312) 747-7893.
 22. PERFORATED LIDS SHALL BE PLACED ON ALL MANHOLES AND CATCH BASINS.
 23. CITY OF CHICAGO WATER VALVE VAULTS AND SEWER STRUCTURES SHALL NOT BE CLOSED, COVERED OR OTHERWISE OBSTRUCTED DURING CONSTRUCTION WITHOUT WRITTEN PERMISSION FROM THE CITY OF CHICAGO DEPARTMENT OF WATER MANAGEMENT.
 24. WHENEVER, DURING CONSTRUCTION OPERATIONS, ANY LOOSE MATERIAL IS DEPOSITED IN THE FLOW LINE OF DRAINAGE STRUCTURES SUCH THAT THE NATURAL FLOW OF WATER IS OBSTRUCTED, IT SHALL BE REMOVED AT THE CLOSE OF EACH WORKING DAY. AT THE CONCLUSION OF CONSTRUCTION OPERATIONS, ALL UTILITY STRUCTURES SHALL BE FREE FROM DIRT AND DEBRIS. THE WORK SPECIFIED ABOVE WILL NOT BE PAID FOR SEPARATELY BUT SHALL BE INCLUDED IN THE COST FOR CATCH BASINS AND MANHOLES TO BE ADJUSTED IN THIS CONTRACT.
 25. ANY EXISTING STORM SEWER DAMAGED BY THE CONTRACTOR DURING CONSTRUCTION SHALL BE REPLACED BY THE CONTRACTOR AT NO COST TO THE CITY.
 26. THE CONTRACTOR SHALL MAINTAIN THE SURFACE DRAINAGE OF THE ROAD DURING CONSTRUCTION UNTIL THE CITY ACCEPTS MAINTENANCE OF THE IMPROVED STREET.
 27. FOR FULL DEPTH CONSTRUCTION OF THE STREET, PLEASE MAKE A NOTE IN THE PLAN ALL THE SEWER(S) IN THE PROJECT AREA WILL BE TELEVIEWED BEFORE AND AFTER CONSTRUCTION. CONTACT DEPARTMENT OF WATER MANAGEMENT AT (312) 747-4680.
 28. THE CONTRACTOR IS REQUIRED TO CONDUCT A PRE-CONSTRUCTION VIDEOTAPED INSPECTION PRIOR TO THE ISSUANCE OF A SEWER PERMIT AND A POST-CONSTRUCTION VIDEOTAPED INSPECTION PRIOR TO ACCEPTANCE OF THE SEWER. THE VIDEOTAPE MUST BE SUBMITTED TO THE SEWER UNIT OF THE DWM FOR REVIEW AND APPROVAL. SHOULD PRE-CONSTRUCTION TELEVISION INDICATE CONDITIONAL ISSUES WITH THE SEWER, IT SHALL BE REPLACED OR REHABILITATED PRIOR TO CONSTRUCTION AS PART OF THE PROJECT IMPROVEMENT.
 29. PLEASE SEE CDWM-SEWER SECTION'S REQUIREMENTS FOR EXISTING FACILITY CONSTRUCTION.

SUMMARY OF QUANTITIES

Item No.	Description	Unit	Quantity
1	TREE REMOVAL (1 TO 6 IN DIAMETER)	UNIT	6
2	TREE REMOVAL (6 TO 15 IN DIAMETER)	UNIT	15
3	TREE REMOVAL (OVER 15 IN DIAMETER)	UNIT	92
4	EARTH EXCAVATION	CU YD	1698
5	TREE PROTECTION	EACH	8
6	ROOT PRUNING	FOOT	60
7	TRENCH BACKFILL	CU YD	98
8	TOPSOIL FURNISH AND PLACE, 4-INCH	SQ YD	1789
9	SODDING, SALT TOLERANT	SQ YD	1703
10	TREE PLANTING, 2-1/2 INCH TO 3-INCH B&B	EACH	40
11	SHREDDED HARDWOOD BARK MULCH	SQ YD	85
12	INLET FILTERS	EACH	5
13	SAND CUSHION, VARIABLE DEPTH	CU YD	2
14	SUB-BASE GRANULAR MATERIAL, TYPE B, 6-INCH	CU YD	888
15	PORTLAND CEMENT CONCRETE BASE COURSE, 7-INCH	SQ YD	4627
16	BITUMINOUS MATERIALS (TACK COAT)	POUND	4545
17	LEVELING BINDER (HAND METHOD), NSO	TON	2
18	LEVELING BINDER (MACHINE METHOD), NSO 1-1/2 INCH	TON	424
19	HOT-MIX ASPHALT SURFACE COURSE, MIX "D", NSO, 2-INCH	TON	566
20	BITUMINOUS COST ADJUSTMENT	CAL MONTH	3
21	PORTLAND CEMENT CONCRETE DRIVEWAY AND ALLEY PAVEMENTS, 8-INCH	SQ YD	330
22	PORTLAND CEMENT CONCRETE SIDEWALK, 5-INCH	SQ FT	10467
23	PORTLAND CEMENT CONCRETE ADA CURB RAMP, 5-INCH	SQ FT	1639
24	PORTLAND CEMENT CONCRETE SIDEWALK, 8-INCH	SQ FT	1,585
25	PORTLAND CEMENT CONCRETE ADA CURB RAMP, 8-INCH	SQ FT	0
26	LINEAR DETECTABLE WARNING TILES (CAST IRON)	SQ FT	336
27	HOT-MIX ASPHALT SURFACE REMOVAL, VARIABLE DEPTH	SQ YD	422
28	PAVEMENT REMOVAL	SQ YD	4666
29	COMBINATION CURB AND GUTTER REMOVAL	FOOT	830
30	SIDEWALK REMOVAL	SQ FT	11376
31	SAW CUTTING PAVEMENT	FOOT	422
32	STORM SEWER, EXTRA STRENGTH VITRIFIED CLAY PIPE, TYPE 2, 8 INCH	FOOT	0
33	STORM SEWER, EXTRA STRENGTH VITRIFIED CLAY PIPE, TYPE 2, 12 INCH	FOOT	0
34	STORM SEWER, EXTRA STRENGTH VITRIFIED CLAY PIPE, TYPE 2, 15 INCH	FOOT	0
35	STORM SEWER, DUCTILE IRON PIPE, TYPE 2, 8 INCH	FOOT	74
36	SEWER CLEANING AND TELEVISION	FOOT	4,152
37	CATCH BASINS, TYPE A, 4-FOOT DIAMETER, TYPE 1 FRAME, OPEN LID (CITY OF CHICAGO)	EACH	2
38	MANHOLES, TYPE B, 3'-DIAMETER, TYPE 1 FRAME, CLOSED LID (CITY OF CHICAGO)	EACH	0
39	ADDITIONAL MASONRY	VERT FT	3
40	CATCH BASINS TO BE ADJUSTED	EACH	2
41	MANHOLES TO BE ADJUSTED	EACH	7
42	INLETS TO BE ADJUSTED	EACH	1
43	REMOVING CATCH BASINS	EACH	3
44	REMOVING INLETS	EACH	1
45	COMBINATION CONCRETE CURB AND GUTTER, TYPE B-V-12	FOOT	2418
46	CONCRETE CURB, TYPE B	FOOT	541
47	ENGINEER'S FIELD OFFICE	CAL MONTH	12
48	TRAFFIC CONTROL COMPLETE	L SUM	1
49	CONSTRUCTION SIGN	EACH	1
50	REMOVE AND SALVAGE SIGN PANEL	EACH	16
51	REMOVE AND SALVAGE SIGN PANEL AND POST ASSEMBLY	EACH	16
52	SIGN SUPPORT POST, DIG METHOD	EACH	19
53	SIGN SUPPORT POST, DRILL METHOD	EACH	0
54	THERMOPLASTIC PAVEMENT MARKING, LINE 4-INCH	FOOT	0
55	THERMOPLASTIC PAVEMENT MARKING, LINE 6-INCH	FOOT	769
56	THERMOPLASTIC PAVEMENT MARKING, LINE 12-INCH	FOOT	31
57	THERMOPLASTIC PAVEMENT MARKING, LINE 24-INCH	FOOT	464
58	SIGN PANEL, TYPE 1, RETROREFLECTIVE, TYPE A - DOUBLE-SIDED	SQ FT	2
59	SIGN PANEL, TYPE 1, RETROREFLECTIVE, TYPE A - SINGLE-SIDED	SQ FT	38
60	PROTECTIVE COAT	SQ YD	1,380
61	AGGREGATE FOR TEMPORARY ACCESS	TON	240
62	DRILL AND GROUT DOWEL AND TIE BARS	EACH	74
63	DRIVEWAY AND ALLEY RETURN PAVEMENT REMOVAL (SPECIAL)	SQ YD	388
64	HOT-MIX ASPHALT SPEED HUMPS	EACH	1
65	PIPE BOLLARDS	EACH	0
66	MAINTENANCE OF STREET LIGHTING SYSTEM	L SUM	0
67	CONDUIT IN TRENCH, PVC (SCHEDULE 80), 2" DIA.	LN FT	2131
68	CONDUIT, DIRECTIONAL BORED, COILABLE NONMETALLIC CONDUIT, SCHEDULE 80, 1 1/4" DIA.	LN FT	0
69	CONDUIT, DIRECTIONAL BORED, COILABLE NONMETALLIC CONDUIT, SCHEDULE 80, 2" DIA.	LN FT	0
70	TRENCH AND BACKFILL WITH SCREENINGS	LN FT	2131
71	CONDUIT RISER ATTACHED TO POLE, 2"	EACH	6
72	HANDHOLE, ELECTRIC, WITH 24" FRAME AND COVER	EACH	1
73	CLEAN EXISTING CITY MANHOLE OR HANDHOLE	EACH	8
74	DRILL EXISTING ELECTRIC HANDHOLE OR MANHOLE	EACH	8
75	ELECTRIC CABLE IN CONDUIT, TRIPLEX, 2-1/1 C NO. 6, 1-1/1 C NO. 8 GROUND	LN FT	2485
76	LUMINAIRE, LED, ACORN, ARTERIAL, RESIDENTIAL	EACH	15
77	LUMINAIRE NODE, INTERNAL	EACH	15
78	CONTROLLER, STREET LIGHTING, POLE MOUNTED, CONSTANT POWER, 1-PHASE, 120/240V, 60A	EACH	4
79	LIGHT POLE, ALUMINUM, DAVIT, 18 FT. M.H., 8 FT DAVIT ARM	EACH	15
80	LIGHT POLE FOUNDATION, METAL, 10" BOLT CIRCLE, 8 5/8" X 5'	EACH	15
81	PAINT EXISTING LIGHT POLE, MAST ARM(S), AND LUMINAIRE(S)	EACH	1
82	REMOVE EXISTING STREET LIGHTING EQUIPMENT	EACH	9
83	BREAKDOWN CONCRETE FOUNDATION, LIGHT POLE	EACH	9
84	POLE, ANCHOR BASE, RELOCATE COMPLETE	EACH	0
85	WIRE, TEMPORARY AERIAL, 3-1/1 C NO. 8 ALUMINUM	FOOT	0
86	SOIL DISPOSAL ANALYSIS	EACH	1
87	REGULATED SUBSTANCES PRE-CONSTRUCTION PLAN	L SUM	1
88	REGULATED SUBSTANCES FINAL CONSTRUCTION REPORT	L SUM	1
89	ON-SITE MONITORING OF REGULATED SUBSTANCES	CAL DA	20
90	NON-SPECIAL WASTE DISPOSAL	CU YD	1,796
91	TEMPORARY CONCRETE BARRIER (TO REMAIN)	FOOT	25
92	PLUG EXISTING SEWER	EACH	3
93	CATCH BASINS, MANHOLES, WATER VALVES, ROUNDWAYS AND INLETS TO BE CLEANED	EACH	5
94	CONCRETE COLLARS	CU YD	0
95	EXISTING SEWER TO BE REMOVED	FOOT	0
96	REMOVING MANHOLES	EACH	0
97	LUMINAIRE, LED, COBRA HEAD, RESIDENTIAL	EACH	15

Addendum 03, 12/02/24

Addendum 03, 12/02/24

Addendum 01, 11/25/24

Addendum 01, 11/25/24

TREE PLANTING SCHEDULE

SYMBOL	NAME	COMMON NAME	QUANTITY
CO	CELTIS OCCIDENTALIS	HACKBERRY	9 EACH
KC	GYMNOCLADUS DIOICUS	KENTUCKY COFFEE TREE	7 EACH
MM	ACER X FREEMANII	MARMO MAPLE	6 EACH
RL	TILA AMERICANA REDMOND	REDMOND LINDED	7 EACH
SWO	OUERCUS BICOLOR	SWAMP WHITE OAK	11 EACH
	• SPRING PLANTING	TOTAL=	40 EACH

CITY OF CHICAGO DEPARTMENT OF TRANSPORTATION

GENERAL NOTES

SCALE:	SHEET 2 OF 2 SHEETS	STA. TO STA.	F.A. RTE.	SECTION	COUNTY	TOTAL SHEETS	SHEET NO.
					COOK	41	3
						CONTRACT NO. C1616	
						ILLINOIS	FED. AID PROJECT

MODEL: SPODELNAME.S FILE NAME: ST1ELS



USER NAME =	DESIGNED - JS	REVISED -
	CHECKED - GC	REVISED -
PLOT SCALE =	DRAWN - JS, PM	REVISED -
PLOT DATE =	DATE - 12/02/2024	ISSUED FOR BID - 11/06/2024

UTILITY NOTES (CONT.)

- THE USE OF CONCRETE, FLOW FILL, OR THE LIKE IS PROHIBITED WITHIN 24 INCHES OF ALL GAS FACILITIES, NOR SHALL IT ENCASE ANY GAS FACILITY. A BUFFER OF 24" SAND IS TO BE USED BETWEEN FLOW FILL AND ALL GAS FACILITIES. A MINIMUM OF 6" FA-02 OR FM-02 SAND SHALL BE USED WHEN BACKFILLING OTHER MATERIALS AROUND ANY EXPOSED GAS FACILITY. CONTRACTOR EXPOSING GAS FACILITY IS RESPONSIBLE FOR PROVIDING THE SAND. ANY DAMAGES TO PEOPLES GAS FACILITIES SHALL BE THE RESPONSIBILITY OF THE INSTALLING UTILITY AND THEIR CONTRACTOR(S). CALL 866-556-6002 IMMEDIATELY FOR ANY DAMAGES TO THE GAS FACILITIES. VERTICAL ADJUSTMENTS REQUIRED FOR VALVE BASIN FRAMES, COVERS, GAS SHUT-OFF VALVES, ROADWAY BOXES SHALL BE COMMUNICATED TO RANDY PEREZ, PLANNING-PERMIT GROUP, RANDY.PEREZ@PEOPLES GASDELIVERY.COM, 4 WEEKS PRIOR TO THE START OF RESTORATION FOR PLANNING & SCHEDULING. ALL GAS FACILITIES ARE TO BE MAINTAINED.
- PEOPLES GAS CAST IRON AND DUCTILE IRON GAS MAINS MAY REQUIRE SUPPORT DURING CONSTRUCTION AND RELATED EXCAVATION ACTIVITIES. ANY EXPOSED JOINTS MUST BE SUPPORTED AND CAST IRON JOINTS SEALED BY GAS COMPANY PERSONNEL. CONTACT THE LOCAL PGL SHOP ENGINEERING SUPERVISOR, A MINIMUM OF 5 BUSINESS DAYS PRIOR TO EXCAVATION TO SET UP ON-SITE INSPECTION. INSPECTION BY PEOPLES GAS IS REQUIRED PRIOR TO BACKFILL. INSPECT GAS MAIN AND COATING INTEGRITY PRIOR TO BACKFILL.
- ANY ISSUES OR WORK NEEDED WHEN CROSSING OR ADJACENT TO ANY COMED ASSETS, PLEASE CONTACT DEJI AKOSILE, VIA EMAIL DEJI.AKOSILE@EXELONCORP.COM AT LEAST SIX WEEKS PRIOR TO CONSTRUCTION START.

ADA NOTES

- FOR THE LATEST CITY OF CHICAGO ADA REQUIREMENTS FOR THE PLANS GO TO WWW.CITYOFCHICAGO.ORG.

LANDSCAPING NOTES

- THE CONTRACTOR IS REQUIRED TO OBTAIN A PERMIT TO REMOVE, PLANT, SPRAY, OR IN ANY WAY AFFECT THE GENERAL HEALTH OR STRUCTURE OF TREES IN THE PUBLIC WAY. THIS PERMIT MAY BE OBTAINED FROM THE DEPUTY COMMISSIONER OF CITY OF CHICAGO BUREAU OF FORESTRY.
- TREES MUST BE TAGGED BY C.D.O.T. CONTACT JEFF BRINK AT (312) 744-7844.

DEPT. OF WATER MANAGEMENT NOTES

- THE CONTRACTOR IS RESPONSIBLE FOR THE ADEQUATE PROTECTION OF THE EXISTING SEWERS, DRAIN CONNECTIONS, SEWER STRUCTURES, AND BENCH MONUMENTS DURING CONSTRUCTION OPERATIONS, AND THE USE OF HEAVY EQUIPMENT WITHIN THE LIMITS OF THE PROJECT.
- IT IS THE RESPONSIBILITY OF THE UTILITY COMPANY/GOVERNMENT AGENCY AND ITS CONSULTANTS/CONTRACTORS TO OBTAIN THE NECESSARY BACKGROUND INFORMATION FROM THE DRAWINGS/CONTRACT PLANS AND FOR EXISTING FACILITIES PROTECTION DURING THE CONSTRUCTION STAGE. RECORDS FROM THE DEPARTMENT OF BUILDINGS, SEWER UNIT INCLUDE: EXISTING SEWERS, DRAIN CONNECTIONS, SEWER STRUCTURES, BENCH MONUMENT LOCATIONS, ORDINANCE GRADES, AGE OF SEWER, AND PIPE MATERIAL. COPIES OF SEWER RECORDS CAN BE OBTAINED ON PAYMENT TO THE DEPARTMENT OF BUILDINGS, SEWER UNIT, LOCATED AT CITY HALL, 121 N. LASALLE ST. ROOM 900, CHICAGO, IL 60602.
- A PERMIT IS REQUIRED FROM THE DEPARTMENT OF BUILDINGS, SEWER UNIT PRIOR TO THE CONSTRUCTION OF, OR REPAIRS TO, UNDERGROUND SEWERS, DRAIN CONNECTIONS, OR SEWER STRUCTURES, INCLUDING THE ADJUSTMENT OF SEWER STRUCTURES AND THE REMOVAL/REPLACEMENT OF FRAMES AND LIDS. THE PERMIT MUST BE OBTAINED BY A DRAINLAYER CURRENTLY LICENSED FROM THE DEPARTMENT OF BUILDINGS, SEWER UNIT.
- IN ORDER TO PROTECT THE CITY'S BENCH MONUMENTS, ALL BENCH MONUMENT LOCATIONS WITHIN THE LIMITS OF THE PROJECT SHOULD BE LISTED ON THE PLAN SHEETS. IF ANY BENCH MONUMENTS ARE NOT LOCATED OR IF DAMAGE TO ANY BENCH MONUMENTS IS ENCOUNTERED, PLEASE CONTACT THE DEPARTMENT OF WATER MANAGEMENT IMMEDIATELY AT (312) 747-7892 OR (312) 747-7893. THE CONTRACTOR IS RESPONSIBLE FOR THE COST OF REPLACEMENT OF ANY BENCH MONUMENT DAMAGED OR DESTROYED DURING CONSTRUCTION.
- IN THE RELOCATION OR CONSTRUCTION OF PRIVATE OR PUBLIC UTILITIES, INCLUDING PIPE UNDERDRAINS AND/OR SUBDRAINS, THE UTILITY SHOULD BE LOCATED AS FAR AWAY AS POSSIBLE FROM THE DEPARTMENT OF WATER MANAGEMENT FACILITY. A MINIMUM DISTANCE OF THE OUTSIDE DIAMETER OF THE SEWER (O.D.) PLUS 4 FEET MUST BE MAINTAINED BETWEEN THE SEWER AND THE UTILITY CENTER LINES. IF THE OUTSIDE DIAMETER/WIDTH OF UTILITY CONDUIT IS MORE THAN THE SEWER O.D., A MINIMUM OF 4 FEET HORIZONTAL CLEARANCE MUST BE OBTAINED FROM THE OUTSIDE FACE TO OUTSIDE FACE. FOUR FEET HORIZONTAL CLEARANCE IS ALSO REQUIRED FROM ALL SEWER STRUCTURES. A MINIMUM OF 10 FEET HORIZONTAL CLEARANCE AND 18 INCHES VERTICAL CLEARANCE IS DESIRABLE BETWEEN THE SEWER AND A WATER MAIN.
- MANHOLES, CATCH BASINS, AND INLETS MUST BE PROTECTED FROM THE ENTRY OF ASPHALT/DEBRIS INTO THE SEWER SYSTEM DURING CONSTRUCTION. THE CONTRACTOR WILL MARK LOCATIONS OF ALL SEWER STRUCTURES ON THE SIDEWALK BEFORE STARTING PAVEMENT REMOVAL/REPLACEMENT. ADJUSTMENT OF FRAMES AND LIDS OF SEWER STRUCTURES MUST BE COMPLETED PRIOR TO STREET RESURFACING.
- THE UTILITY COMPANY/GOVERNMENT AGENCY OR ITS REPRESENTING CONTRACTOR MUST MAINTAIN ACCESS TO THE EXISTING SEWER FACILITIES, INCLUDING SEWER STRUCTURES, AT ALL TIMES AND COORDINATE THE PROPOSED IMPROVEMENTS WITH THE DEPARTMENT OF WATER MANAGEMENT ENGINEER/INSPECTOR TO AVOID ANY INTERRUPTION OF THE SEWER FACILITIES' MAINTENANCE OR SERVICES. THE SEWER FLOW MUST BE MAINTAINED AT ALL TIMES.

- THE CONTRACTOR MUST LOCATE AND PROMPTLY AND PROPERLY CONNECT TO THE NEW SEWERS ALL LIVE HOUSE DRAINS, CATCH BASIN DRAINS, AND OTHER EXISTING LATERALS, DRAINS, AND SEWERS OF WHATEVER NATURE WHICH ARE CONNECTED TO THE EXISTING SEWERS BEING REPAIRED OR REPLACED.
- EXISTING CATCH BASIN LATERALS TO BE REUSED MUST BE RODDED AND FLUSHED IN THE PRESENCE OF THE DEPARTMENT OF WATER MANAGEMENT INSPECTOR. A NEW CONNECTION TO THE MAIN SEWER IS REQUIRED IF THE EXISTING CATCH BASIN LATERAL IS NOT APPROVED BY THE SEWER INSPECTOR.
- WHEN A SEWER STRUCTURE IS ABANDONED, ALL PIPE OPENINGS MUST BE PLUGGED, STRUCTURES FILLED WITH TRENCH BACKFILL, LIDS AND FRAMES REMOVED, AND SURFACE RESTORED AS PER THE DEPARTMENT OF WATER MANAGEMENT STANDARDS AND SPECIFICATIONS.
- WHEN DIRECTED BY THE COMMISSIONER, THE CONTRACTOR IS REQUIRED TO REPLACE ANY BROKEN FRAMES AND LIDS OF SEWER STRUCTURES WITH THE DEPARTMENT OF WATER MANAGEMENT STANDARD FRAMES AND LIDS.
- THE FRAMES AND LIDS OF SEWER STRUCTURES TO BE ABANDONED, REMOVED, OR FILLED SHOULD BE SALVAGED, AND THE CONTRACTOR MUST NOTIFY THE DEPARTMENT OF WATER MANAGEMENT FOR PICK UP.
- IN ARTERIAL STREETS, PERFORATED LIDS MUST BE PLACED ON ALL SEWER STRUCTURES UNLESS OTHERWISE APPROVED BY THE COMMISSIONER. IN RESIDENTIAL STREETS, MANHOLES MAY REQUIRE CLOSED LIDS. CONTRACTOR TO COORDINATE WITH THE DEPARTMENT OF WATER MANAGEMENT INSPECTOR.
- DURING CONSTRUCTION OF THIS PROJECT, THE CONTRACTOR SHALL MAINTAIN THE SURFACE DRAINAGE OF THE ROAD AT ALL TIMES.
- IF THE CONDITION OF EXISTING CATCH BASINS OR INLETS IS SUCH THAT THEIR ADJUSTMENT IS NOT FEASIBLE AT THE TIME OF CONSTRUCTION, THE CONTRACTOR MUST FURNISH AND INSTALL NEW CATCH BASINS OR INLETS AND THEIR APPURTENANCES AS DIRECTED BY THE COMMISSIONER AND WITH THE CONCURRENCE OF THE DEPARTMENT OF WATER MANAGEMENT. THIS WORK WILL BE PAID FOR AT THE CONTRACT UNIT PRICE EACH FOR 'CATCH BASINS, TYPE A, 4 FT DIAMETER, TYPE 1 FRAME, OPEN LID (CITY OF CHICAGO)' OR FOR 'INLETS, TYPE A, TYPE 1 FRAME, OPEN LID (CITY OF CHICAGO)'.
- THE LOCATION OF PROPOSED WATER LINES, METER VAULTS, VALVES AND RPZ'S SHOWN ON THE PLANS ARE APPROXIMATE. THE CONTRACTOR SHALL MARK THE LAYOUT AND LOCATION OF THE WATER LINES, METER VAULTS, VALVES, AND RPZ'S FOR REVIEW BY COMMISSIONER PRIOR TO ANY EXCAVATION.
- THE CONTRACTOR SHALL VERIFY THE LOCATION OF ALL PROPOSED WATER SERVICE CONNECTIONS PRIOR THE INSTALLATION OF THE IRRIGATION SYSTEM. THE CITY OF CHICAGO, DEPARTMENT OF WATER MANAGEMENT WILL PERFORM THE WATER SERVICE CONNECTION TO THE EXISTING WATER MAIN. IT SHALL BE THE CONTRACTOR'S RESPONSIBILITY TO OBTAIN ALL NECESSARY PERMITS AND PAY THE ASSOCIATED FEES. ALL PERMIT FEES WILL BE CONSIDERED INCIDENTAL TO THE CONTRACT.
- IN CASE OF DAMAGE TO THE CITY'S SEWER SYSTEM, PRIVATE AND PUBLIC DRAIN CONNECTIONS, AND/OR BENCH MONUMENTS, THE CONTRACTOR MUST CONTACT THE DEPARTMENT OF BUILDINGS, SEWER UNIT, IMMEDIATELY AT PHONE NUMBER (312) 744-3351. THE CONTRACTOR MUST, AT HIS/HER OWN COST, REPLACE THE AFFECTED SEWERS, DRAIN CONNECTIONS, SEWER STRUCTURES AND/OR BENCH MONUMENTS AS NECESSARY. THE SEWER FLOWS MUST BE MAINTAINED AT ALL TIMES.
- FLOW RESTRICTORS MUST BE INSTALLED IN ALL CATCH BASINS, OUTSIDE OF THE CENTRAL BUSINESS DISTRICT. FLOW RESTRICTORS MUST NOT BE INSTALLED IN CLOSE PROXIMITY TO VIADUCT AREAS, BUS STOPS, OR EMERGENCY ENTRANCES. FLOW RESTRICTORS ARE AVAILABLE FOR PICK-UP AT THE DWM'S CENTRAL DISTRICT, LOCATED AT 3901 S. ASHLAND AVENUE, BY CALLING (312) 747-1777, BETWEEN 7:00 AM - 3:00 PM, 48 HOURS IN ADVANCE.
- AS-BUILT PLANS MUST BE SUBMITTED SOON AFTER WORK COMPLETION. FINAL PAYMENT WILL NOT BE MADE TO THE CONTRACTOR UNTIL THE SEWER UNIT OF THE DWM ACKNOWLEDGES RECEIPT OF "AS-BUILT PLANS".
- IN CASE OF DAMAGE TO THE CITY OF CHICAGO SEWERS, PRIVATE AND PUBLIC DRAINS, SEWER STRUCTURES AND/OR BENCH MONUMENTS, THE CONTRACTOR SHALL IMMEDIATELY CONTACT THE DEPARTMENT OF WATER MANAGEMENT AT (312) 747-7892 OR (312) 747-7893.
- PERFORATED LIDS SHALL BE PLACED ON ALL MANHOLES AND CATCH BASINS.
- CITY OF CHICAGO WATER VALVE VAULTS AND SEWER STRUCTURES SHALL NOT BE CLOSED, COVERED OR OTHERWISE OBSTRUCTED DURING CONSTRUCTION WITHOUT WRITTEN PERMISSION FROM THE CITY OF CHICAGO DEPARTMENT OF WATER MANAGEMENT.
- WHENEVER, DURING CONSTRUCTION OPERATIONS, ANY LOOSE MATERIAL IS DEPOSITED IN THE FLOW LINE OF DRAINAGE STRUCTURES SUCH THAT THE NATURAL FLOW OF WATER IS OBSTRUCTED, IT SHALL BE REMOVED AT THE CLOSE OF EACH WORKING DAY. AT THE CONCLUSION OF CONSTRUCTION OPERATIONS, ALL UTILITY STRUCTURES SHALL BE FREE FROM DIRT AND DEBRIS. THE WORK SPECIFIED ABOVE WILL NOT BE PAID FOR SEPARATELY BUT SHALL BE INCLUDED IN THE COST FOR CATCH BASINS AND MANHOLES TO BE ADJUSTED IN THIS CONTRACT.
- ANY EXISTING STORM SEWER DAMAGED BY THE CONTRACTOR DURING CONSTRUCTION SHALL BE REPLACED BY THE CONTRACTOR AT NO COST TO THE CITY.
- THE CONTRACTOR SHALL MAINTAIN THE SURFACE DRAINAGE OF THE ROAD DURING CONSTRUCTION UNTIL THE CITY ACCEPTS MAINTENANCE OF THE IMPROVED STREET.
- FOR FULL DEPTH CONSTRUCTION OF THE STREET, PLEASE MAKE A NOTE IN THE PLAN ALL THE SEWER(S) IN THE PROJECT AREA WILL BE TELEVIEWED BEFORE AND AFTER CONSTRUCTION. CONTACT DEPARTMENT OF WATER MANAGEMENT AT (312) 747-4680.
- THE CONTRACTOR IS REQUIRED TO CONDUCT A PRE-CONSTRUCTION VIDEOTAPED INSPECTION PRIOR TO THE ISSUANCE OF A SEWER PERMIT AND A POST-CONSTRUCTION VIDEOTAPED INSPECTION PRIOR TO ACCEPTANCE OF THE SEWER. THE VIDEOTAPE MUST BE SUBMITTED TO THE SEWER UNIT OF THE DWM FOR REVIEW AND APPROVAL. SHOULD PRE-CONSTRUCTION TELEVIEWING INDICATE CONDITIONAL ISSUES WITH THE SEWER, IT SHALL BE REPLACED OR REHABILITATED PRIOR TO CONSTRUCTION AS PART OF THE PROJECT IMPROVEMENT.

SUMMARY OF QUANTITIES

Item No.	Code Number	Description	Unit	Quantity
1	20100010	TREE REMOVAL (1 TO 6 IN DIAMETER)	UNIT	20
2	20100110	TREE REMOVAL (6 TO 15 IN DIAMETER)	UNIT	12
3	20100210	TREE REMOVAL (OVER 15 IN DIAMETER)	UNIT	120
4	20200100	EARTH EXCAVATION	CU YD	1103
5	20101100C	TREE PROTECTION	EACH	11
6	20101210C	ROOT PRUNING	FOOT	0
7	20800150	TRENCH BACKFILL	CU YD	143
8	21101615	TOPSOIL FURNISH AND PLACE, 4-INCH	SQ YD	1639
9	25200110	SODDING, SALT TOLERANT	SQ YD	1639
10	*****	TREE PLANTING, 2-1/2 INCH TO 3-INCH 3/8"	EACH	13
11	251K0100C	SHREDDED HARDWOOD BARK MULCH	SQ YD	41
12	28000510	INLET FILTERS	EACH	0
13	CDOT3110010	SAND CUSHION, VARIABLE DEPTH	CU YD	15
14	31101100	SUB-BASE GRANULAR MATERIAL, TYPE I, 6-INCH	CU YD	386
15	35300200	PORTLAND CEMENT CONCRETE BASE COURSE, 7-INCH	SQ YD	1816
16	40600290	BITUMINOUS MATERIALS (TACK COAT)	POUND	2511
17	40600525	LEVELING BINDER (HAND METHOD), N50	TON	1
18	40600635	LEVELING BINDER (MACHINE METHOD), N50 1-1/2 INCH	TON	156
19	40604060	HOT-MIX ASPHALT SURFACE COURSE, MIX "D", N50, 2-INCH	TON	208
20	80173	BITUMINOUS COST ADJUSTMENT	CAL MONTH	3
21	42300400	PORTLAND CEMENT CONCRETE DRIVEWAY AND ALLEY PAVEMENTS, 8-INCH	SQ YD	328
22	42400200C	PORTLAND CEMENT CONCRETE SIDEWALK, 5-INCH	SQ FT	2,214
23	42400210C	PORTLAND CEMENT CONCRETE ADA CURB RAMP, 5-INCH	SQ FT	751
24	42400410C	PORTLAND CEMENT CONCRETE SIDEWALK, 8-INCH	SQ FT	0
25	42400420C	PORTLAND CEMENT CONCRETE ADA CURB RAMP, 8-INCH	SQ FT	0
26	42400800C	LINEAR DETECTABLE WARNING TILES (CAST IRON)	SQ FT	32
27	44000500C	HOT-MIX ASPHALT SURFACE REMOVAL, VARIABLE DEPTH	SQ YD	44
28	44000100C	PAVEMENT REMOVAL	SQ YD	1315
29	44000500	COMBINATION CURB AND GUTTER REMOVAL	FOOT	106
30	44000600	SIDEWALK REMOVAL	SQ FT	1325
31	44220200C	SAW CUTTING PAVEMENT	FOOT	133
32	55020108C	STORM SEWER, EXTRA STRENGTH VITRIFIED CLAY PIPE, TYPE 2, 8 INCH	FOOT	44
33	55020112C	STORM SEWER, EXTRA STRENGTH VITRIFIED CLAY PIPE, TYPE 2, 12 INCH	FOOT	116
34	55020114C	STORM SEWER, EXTRA STRENGTH VITRIFIED CLAY PIPE, TYPE 2, 15 INCH	FOOT	10
35	55020132C	STORM SEWER, DUCTILE IRON PIPE, TYPE 2, 8 INCH	FOOT	0
36	55120400C	SEWER CLEANING AND TELEVISION	FOOT	538
37	60200105C	CATCH BASINS, TYPE A, 4-FOOT DIAMETER, TYPE 1 FRAME, OPEN LID (CITY OF CHICAGO)	EACH	4
38	60220115C	MANHOLES, TYPE B, 3'-DIAMETER, TYPE 1 FRAME, CLOSED LID (CITY OF CHICAGO)	EACH	3
39	60220700C	ADDITIONAL MASONRY	VERT FT	0
40	60250200	CATCH BASINS TO BE ADJUSTED	EACH	0
41	60255500	MANHOLES TO BE ADJUSTED	EACH	0
42	60260100	INLETS TO BE ADJUSTED	EACH	0
43	60500050C	REMOVING CATCH BASINS	EACH	4
44	60500060C	REMOVING INLETS	EACH	0
45	60620100C	COMBINATION CONCRETE CURB AND GUTTER, TYPE B-V-12	FOOT	1174
46	606006050C	CONCRETE CURB, TYPE B	FOOT	259
47	67020100C	ENGINEER'S FIELD OFFICE	CAL MONTH	0
48	70120300C	TRAFFIC CONTROL COMPLETE	L SUM	0
49	72420300C	CONSTRUCTION SIGN	EACH	1
50	72420300C	REMOVE AND SALVAGE SIGN PANEL	EACH	6
51	72420310C	REMOVE AND SALVAGE SIGN PANEL AND POST ASSEMBLY	EACH	6
52	72920110C	SIGN SUPPORT POST, DIG METHOD	EACH	5
53	72920120C	SIGN SUPPORT POST, DRILL METHOD	EACH	0
54	78000200	THERMOPLASTIC PAVEMENT MARKING, LINE 4-INCH	FOOT	104
55	78000400	THERMOPLASTIC PAVEMENT MARKING, LINE 6-INCH	FOOT	0
56	78000600	THERMOPLASTIC PAVEMENT MARKING, LINE 12-INCH	FOOT	0
57	78000650	THERMOPLASTIC PAVEMENT MARKING, LINE 24-INCH	FOOT	105
58	X2600009	SIGN PANEL, TYPE 1, RETROREFLECTIVE, TYPE A - DOUBLE-SIDED	SQ FT	3
59	X2600010	SIGN PANEL, TYPE 1, RETROREFLECTIVE, TYPE A - SINGLE-SIDED	SQ FT	64
60	999X1000C	PROTECTIVE COAT	SQ YD	945
61	70120800C	AGGREGATE FOR TEMPORARY ACCESS	TON	75
62	999X0900C	DRILL AND GROUT DOWEL AND TIE BARS	EACH	57
63	*****	DRIVEWAY AND ALLEY RETURN PAVEMENT REMOVAL (SPECIAL)	SQ YD	361
64	*****	HOT-MIX ASPHALT SPEED HUMPS	EACH	0
65	CDOTX00010	PIPE BOLLARDS	EACH	0
66	80120100C	MAINTENANCE OF STREET LIGHTING SYSTEM	L SUM	0
67	81020265C	CONDUIT IN TRENCH, PVC (SCHEDULE 80), 2" DIA.	LN FT	964
68	81020280C	CONDUIT, DIRECTIONAL BORED, COILABLE NONMETALLIC CONDUIT, SCHEDULE 80, 1 1/4" DIA.	LN FT	0
69	81020285C	CONDUIT, DIRECTIONAL BORED, COILABLE NONMETALLIC CONDUIT, SCHEDULE 80, 2" DIA.	LN FT	0
70	81020300C	TRENCH AND BACKFILL WITH SCREENINGS	LN FT	964
71	81120120C	CONDUIT RISER ATTACHED TO POLE, 2"	EACH	3
72	81420130C	HANDHOLE, ELECTRIC, WITH 24" FRAME AND COVER	EACH	2
73	81420400C	(IF AN EXISTING CITY MANHOLE FOR MANHOLE F	EACH	0
74	81420500C	DRILL EXISTING ELECTRIC HANDHOLE OR MANHOLE	EACH	0
75	81720220C	ELECTRIC CABLE IN CONDUIT, TRIPLEX, 2-1/1" C NO. 6, 1-1/1" C NO. 8 GROUND	LN FT	1277
76	82120300C	LUMINAIRE, LED, ACORN, ARTERIAL, RESIDENTIAL	EACH	8
77	82121300C	LUMINAIRE NODE, INTERNAL	EACH	8
78	82520200C	CONTROLLER, STREET LIGHTING, POLE MOUNTED, CONSTANT POWER, 1-PHASE, 120/240V, 60A	EACH	2
79	83000023C	LIGHT POLE, ALUMINUM, DAVIT, 18 FT. M.H., 8 FT DAVIT ARM	EACH	8
80	83620210C	LIGHT POLE FOUNDATION, METAL, 10" BOLT CIRCLE, 8 5/8" X 5'	EACH	8
81	85120100C	PAINT EXISTING LIGHT POLE, MAST ARM(S), AND LUMINAIRE(S)	EACH	1
82	89520100C	REMOVE EXISTING STREET LIGHTING EQUIPMENT	EACH	2
83	89521100C	BREAKDOWN CONCRETE FOUNDATION, LIGHT POLE	EACH	2
84	*****	POLE, ANCHOR BASE, RELOCATE COMPLETE	EACH	0
85	*****	WIRE, TEMPORARY AERIAL, 3-1/1" C NO.8 ALUMINUM	FOOT	0
86	66900530	SOIL DISPOSAL ANALYSIS	EACH	1
87	66901001	REGULATED SUBSTANCES PRE-CONSTRUCTION PLAN	L SUM	1
88	66901003	REGULATED SUBSTANCES FINAL CONSTRUCTION REPORT	L SUM	1
89	66901006	ON-SITE MONITORING OF REGULATED SUBSTANCES	CAL DA	20
90	66900200	NON-SPECIAL WASTE DISPOSAL	CU YD	1246
91	*****	TEMPORARY CONCRETE BARRIER (TO REMAIN)	FOOT	0
92	*****	PLUG EXISTING SEWER	EACH	0
93	69921400C	CATCH BASINS, MANHOLES, WATER VALVES, ROUNDWAYS AND INLETS TO BE CLEANED	EACH	0
94	54248510	CONCRETE COLLARS	CU YD	2
95	55120800C	EXISTING SEWER TO BE REMOVED	FOOT	24
96	60300400	REMOVING MANHOLES	EACH	1
97	82120860C	LUMINAIRE, LED, COBRA HEAD, RESIDENTIAL	EACH	8

Addendum 03, 12/02/24

TREE PLANTING SCHEDULE

SYMBOL	NAME	COMMON NAME	QUANTITY
CO	CELTIS OCCIDENTALIS HACKBERRY	HACKBERRY	3 EACH
MM	ACER X FREEMANI 'JEFFERS RED' MARMO MAPLE	MARMO MAPLE	4 EACH
RL	TILIA AMERICANA 'REDMOND' REDMOND LINDEN	REDMOND	3 EACH
MP	MALUS 'PRAIRIE FIRE' 'PRAIRIE FIRE' CRABAPPLE	CRABAPPLE	3 EACH
* SPRING PLANTING			TOTAL= 13

Addendum 01, 11/25/24

MODEL: Default FILE NAME: A:\04\03\2024\04\23\06\00\00\Project_16_102406_S1\WPA_102406_S1-312-CEN\NOTE_02.dgn

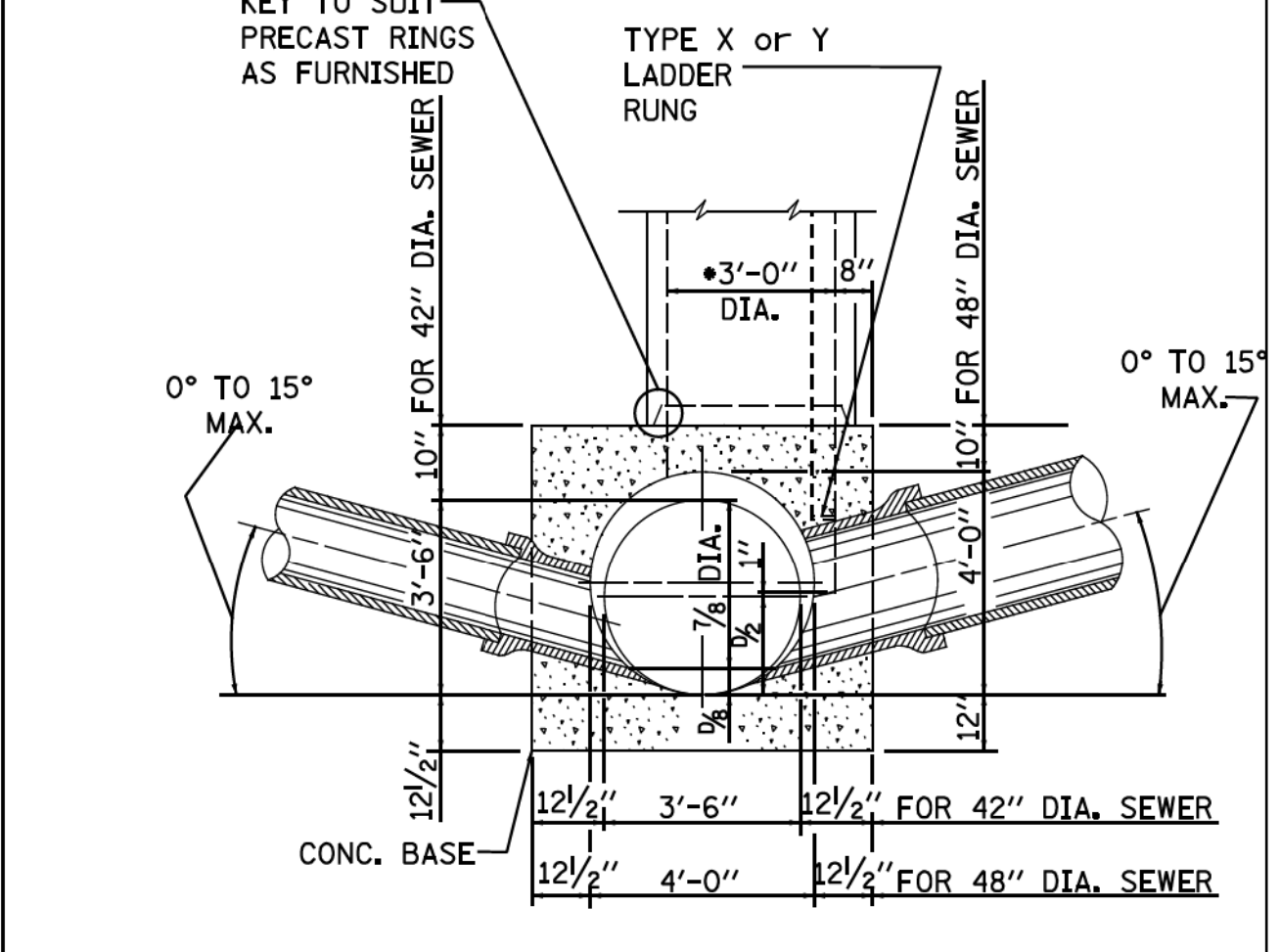
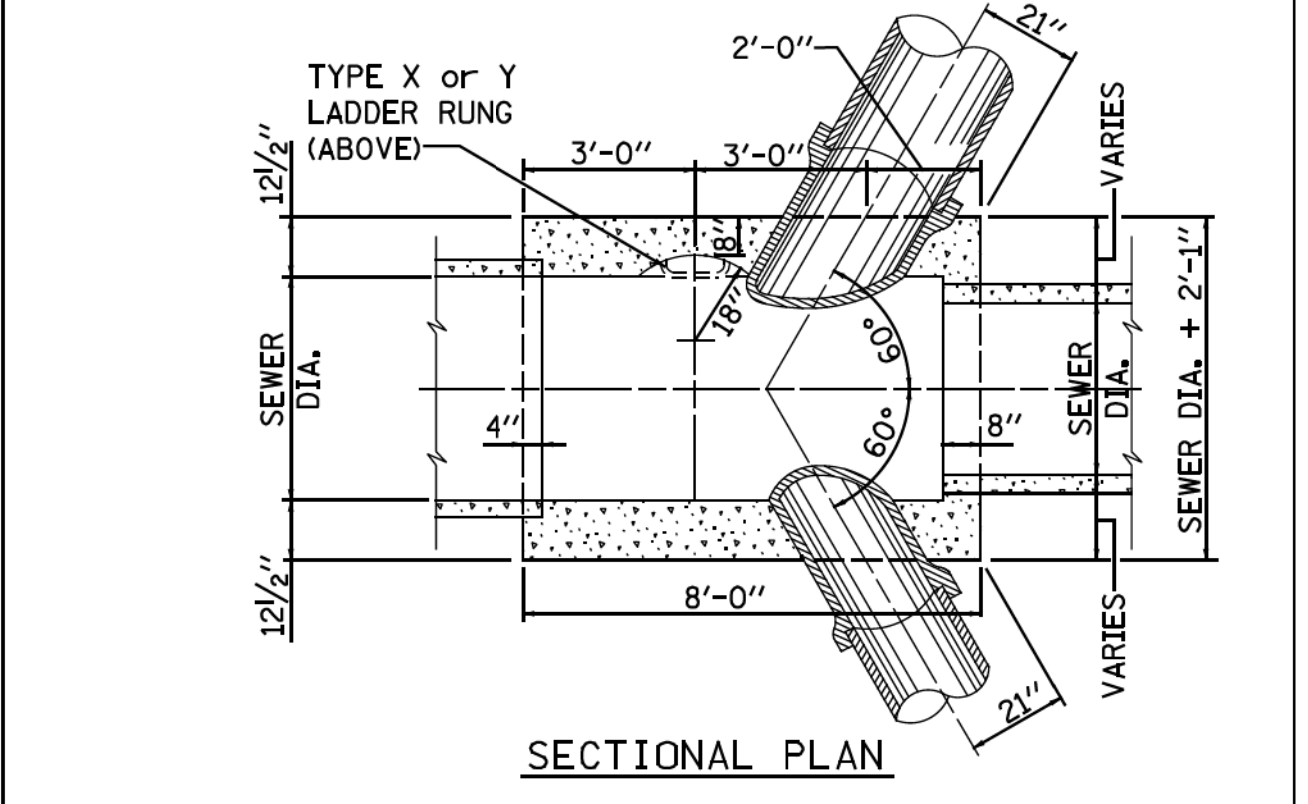
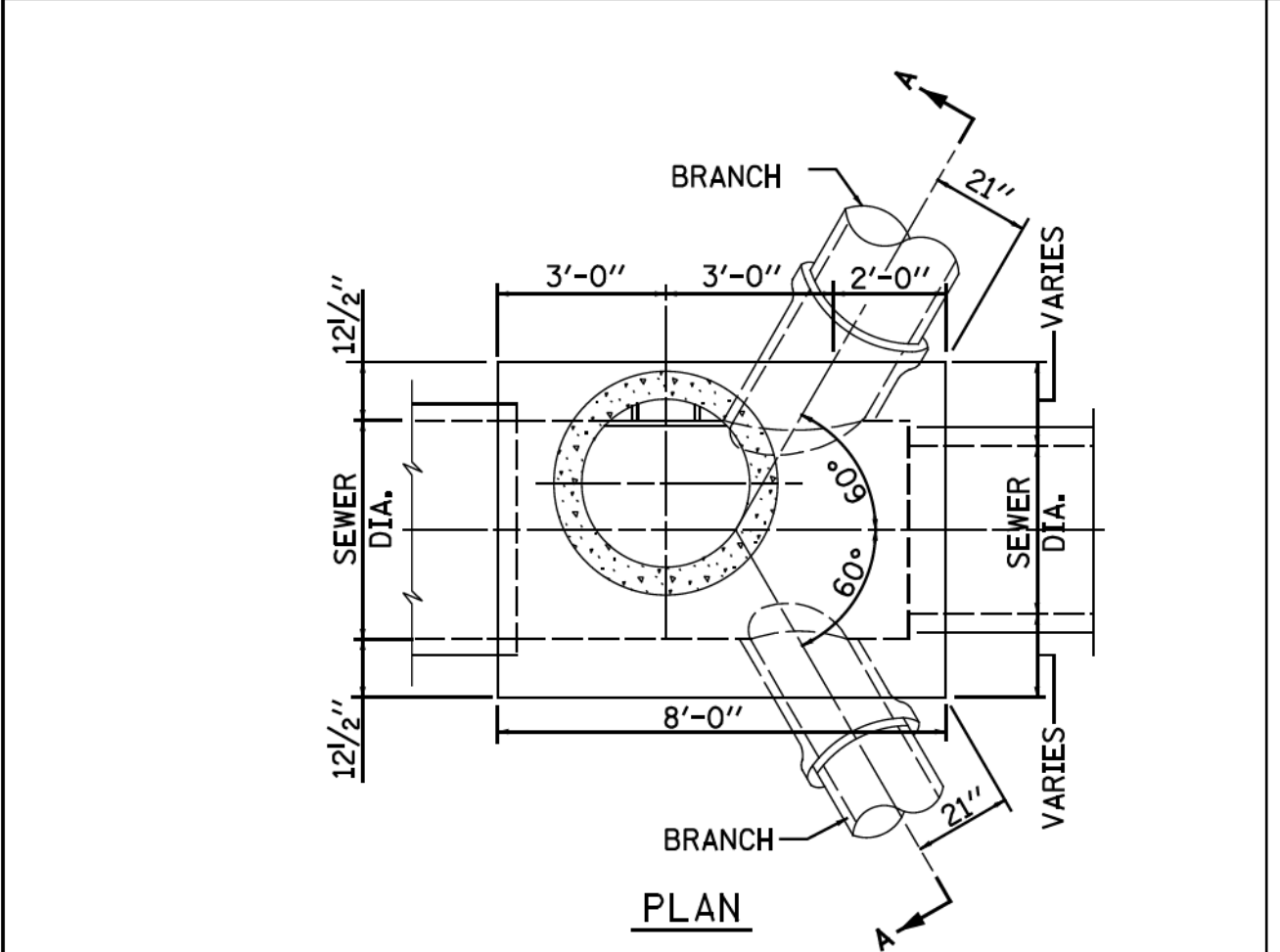


USER NAME = 0766	DESIGNED - JO	REVISED -
	DRAWN - MA	REVISED -
PLOT SCALE = 40.0000' / in.	CHECKED - TNS	REVISED -
PLOT DATE = 12/2/2024 - 2:00:12 PM	DATE - 12/2/2024	ISSUE FOR BID - 11/06/2024

CITY OF CHICAGO DEPARTMENT OF TRANSPORTATION

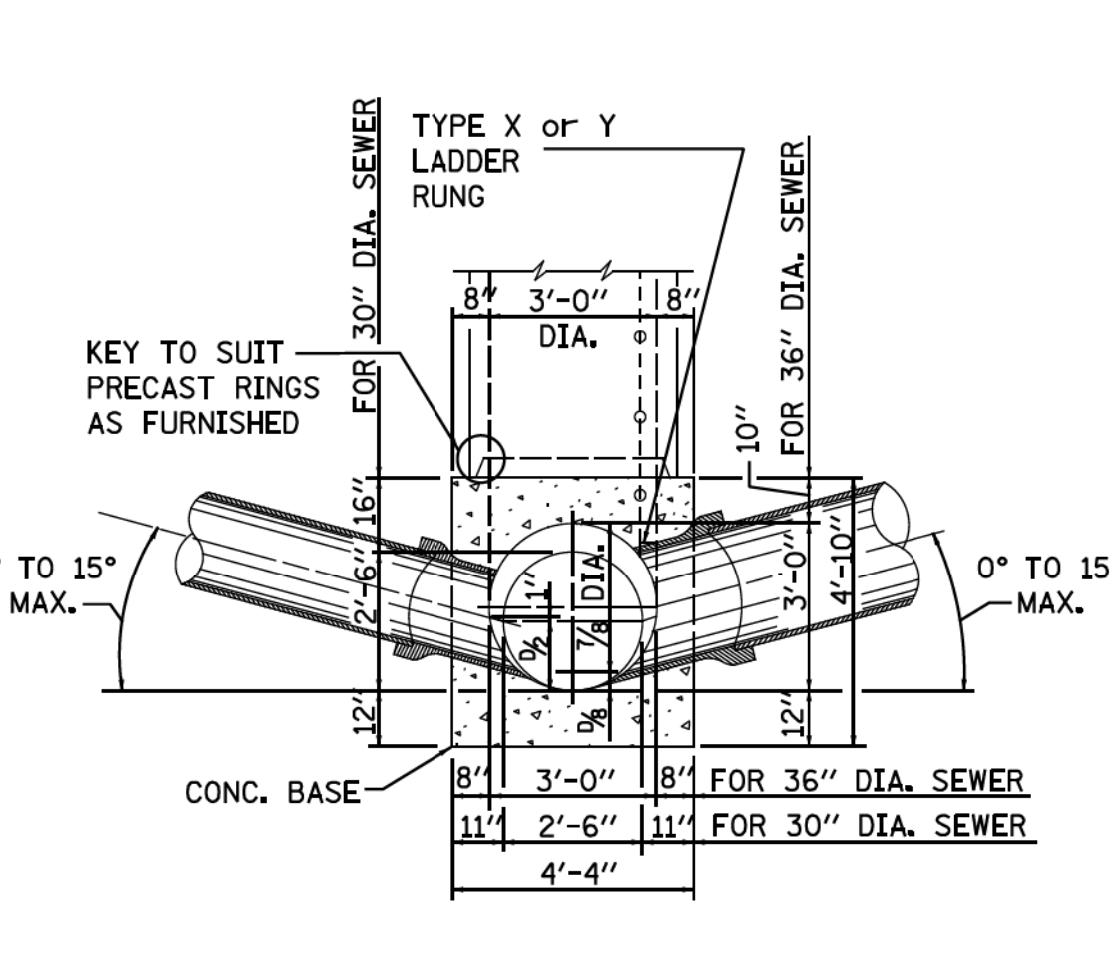
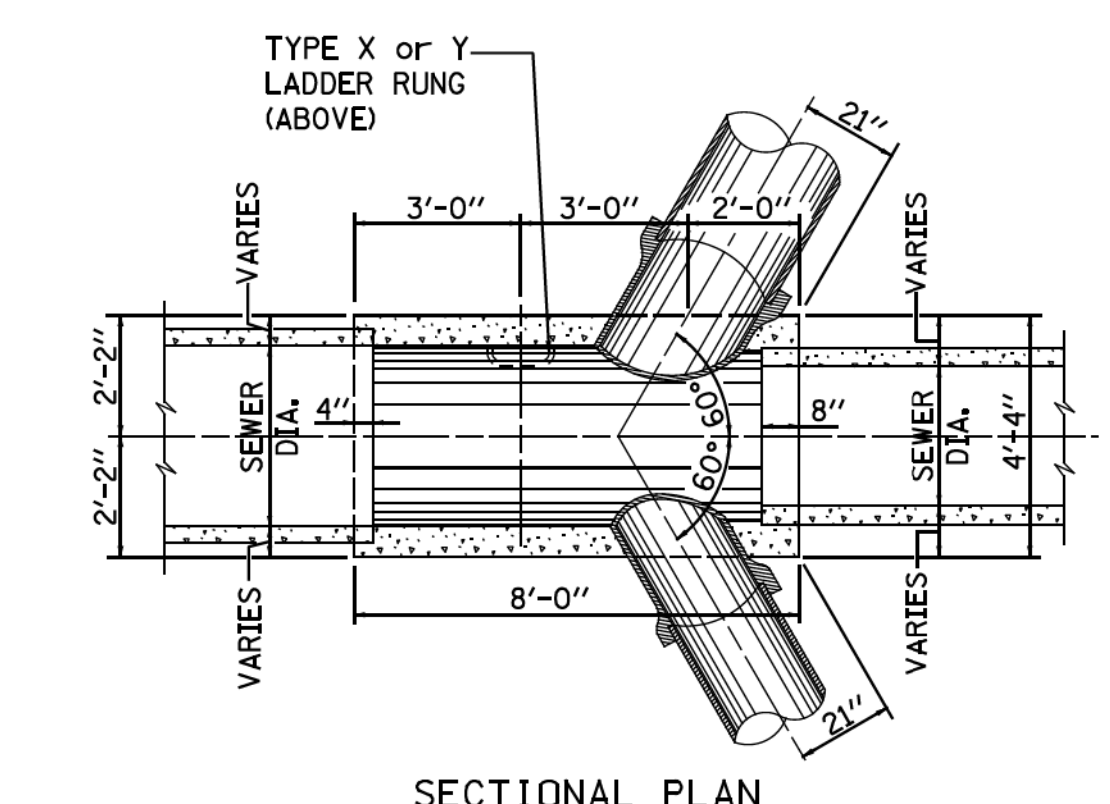
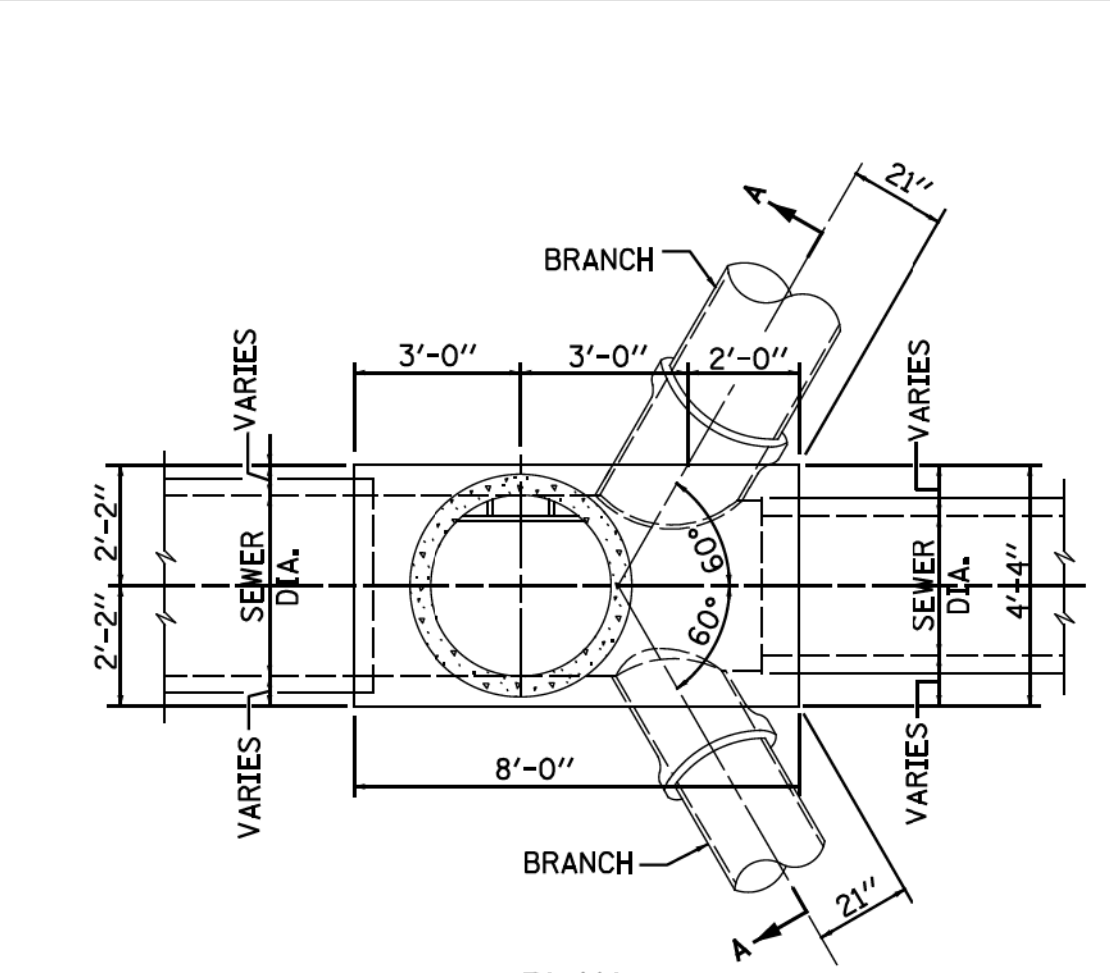
GENERAL NOTES

SCALE: 1"=20'	SHEET 2	OF 2 SHEETS	STA. TO STA.	F.A. RTE.	SECTION	COUNTY	TOTAL SHEETS	SHEET NO.	
							COOK	31	3
							CONTRACT NO. C1616		
							ILLINOIS	FED. AID PROJECT	



SECTION A-A
TYPE "B" MANHOLE
FOR SEWERS 48" DIA. & 42" DIA.

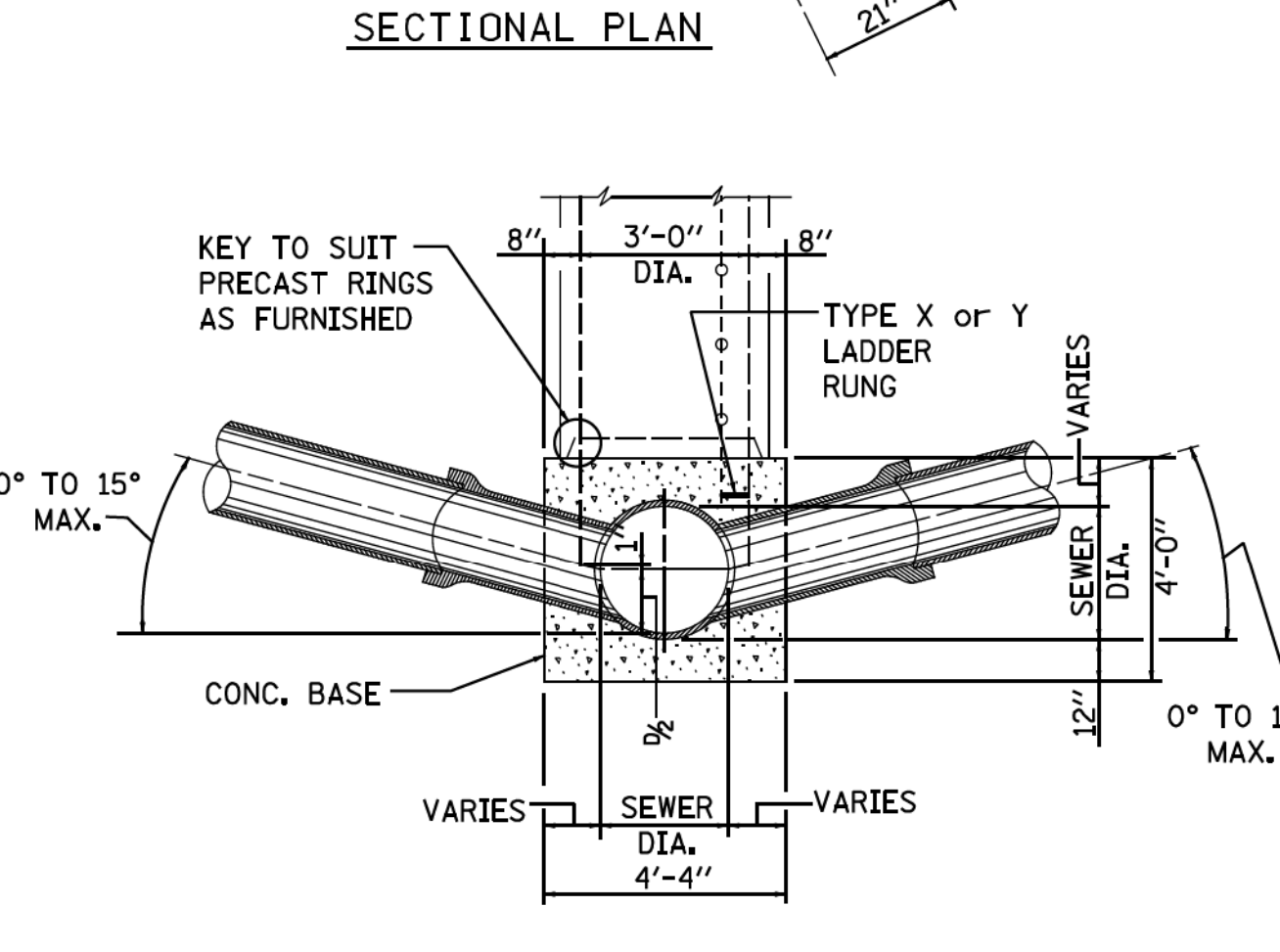
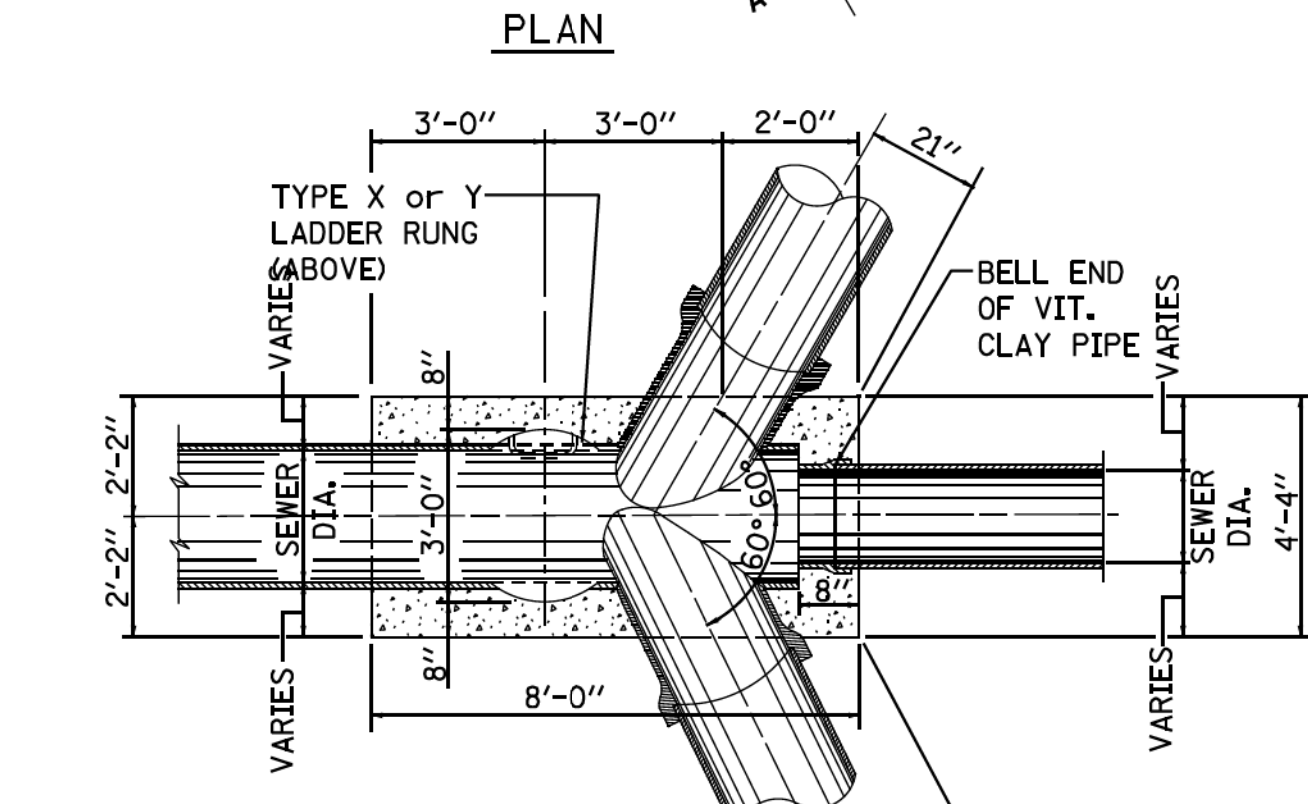
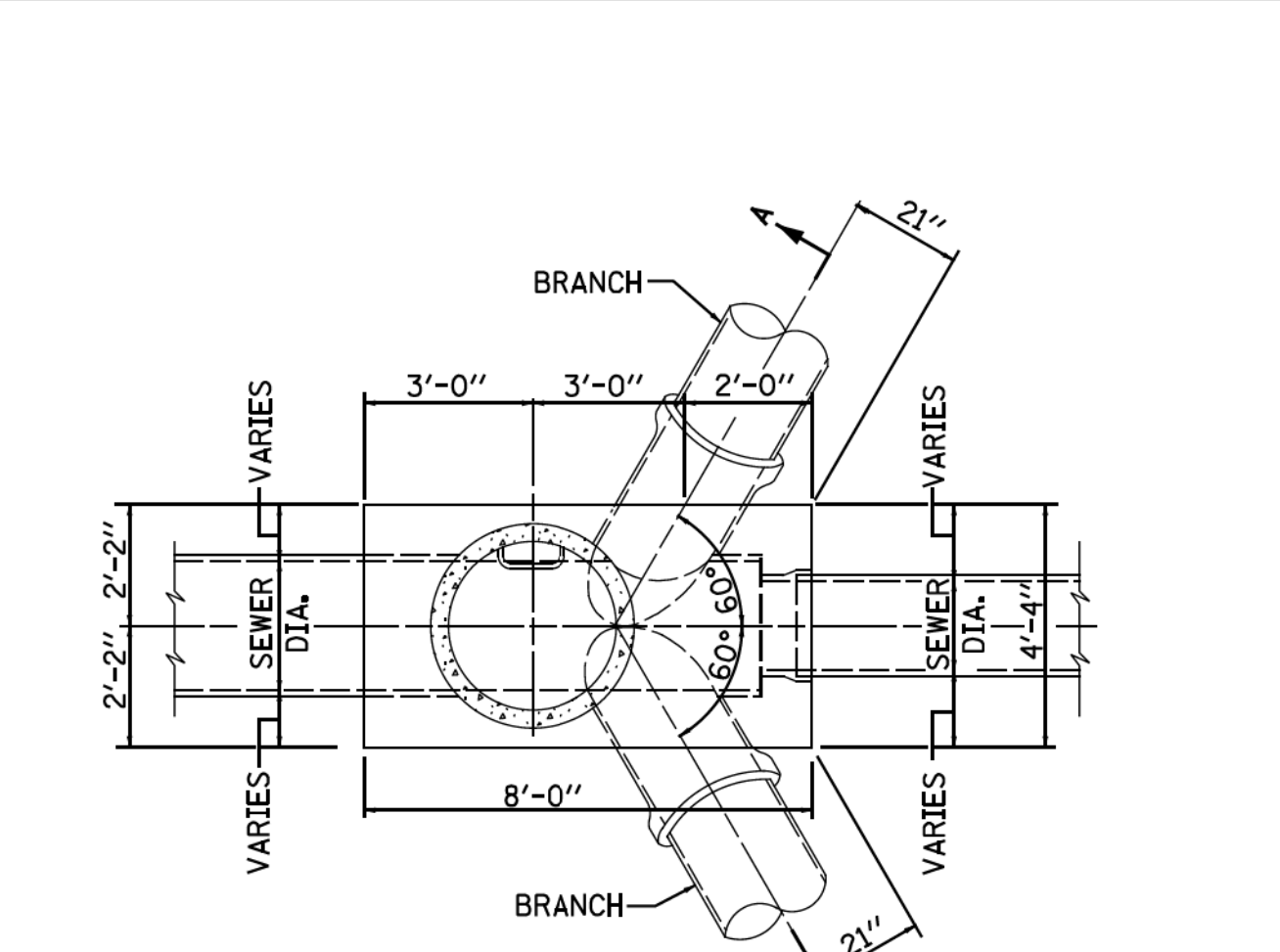
Not To Scale



SECTION A-A
TYPE "B" MANHOLE
FOR SEWERS 36" DIA. & 30" DIA.

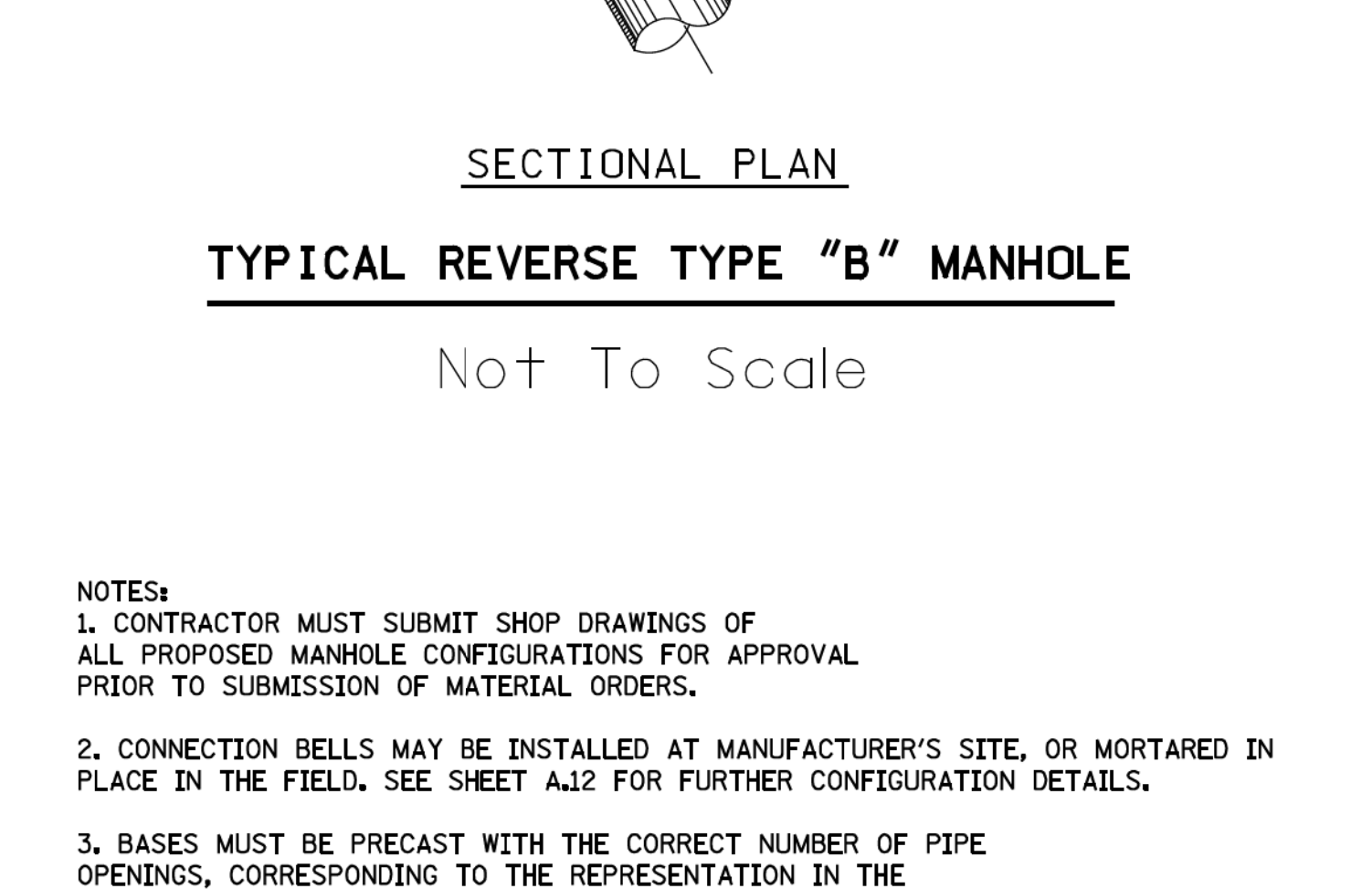
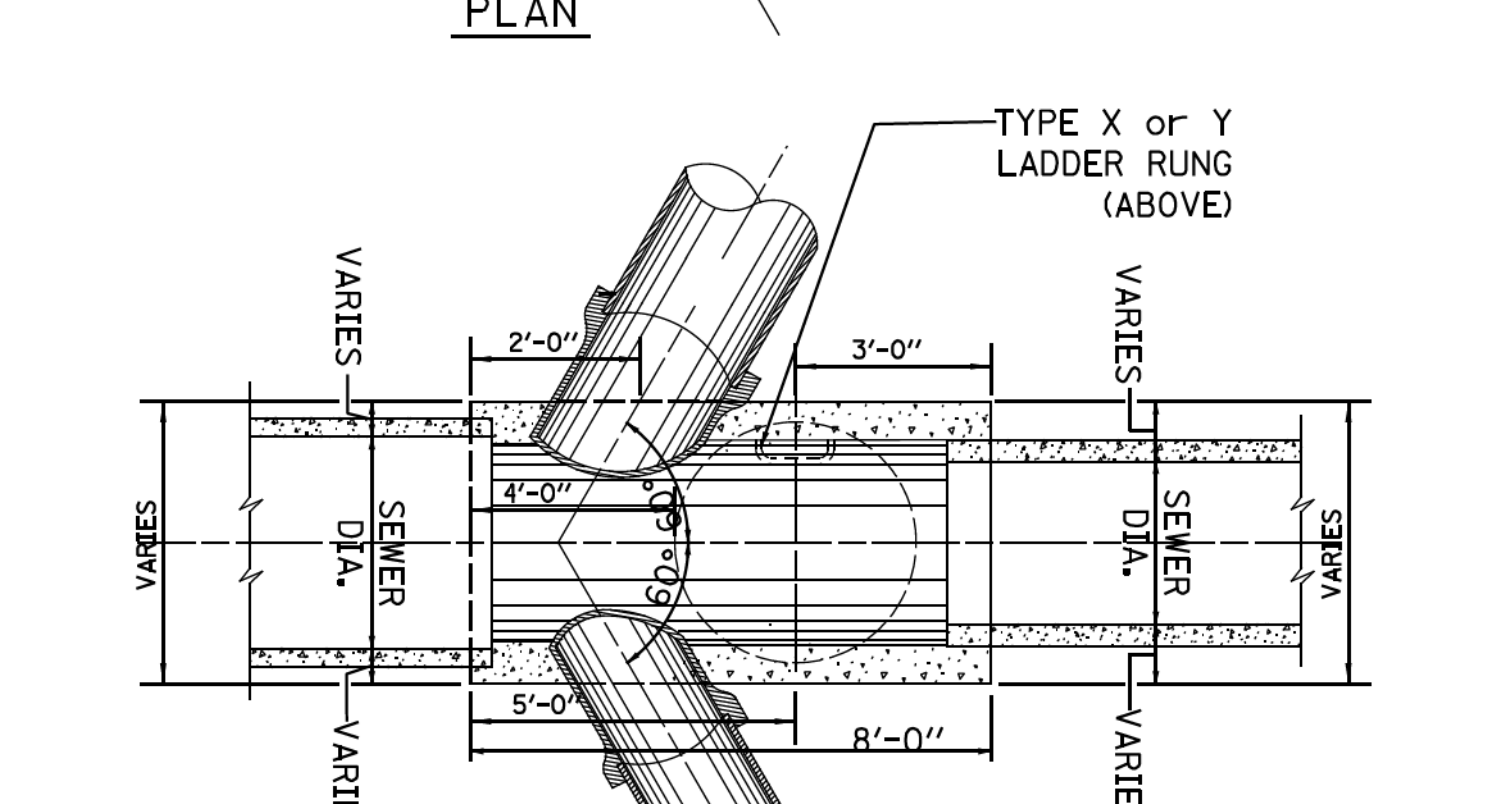
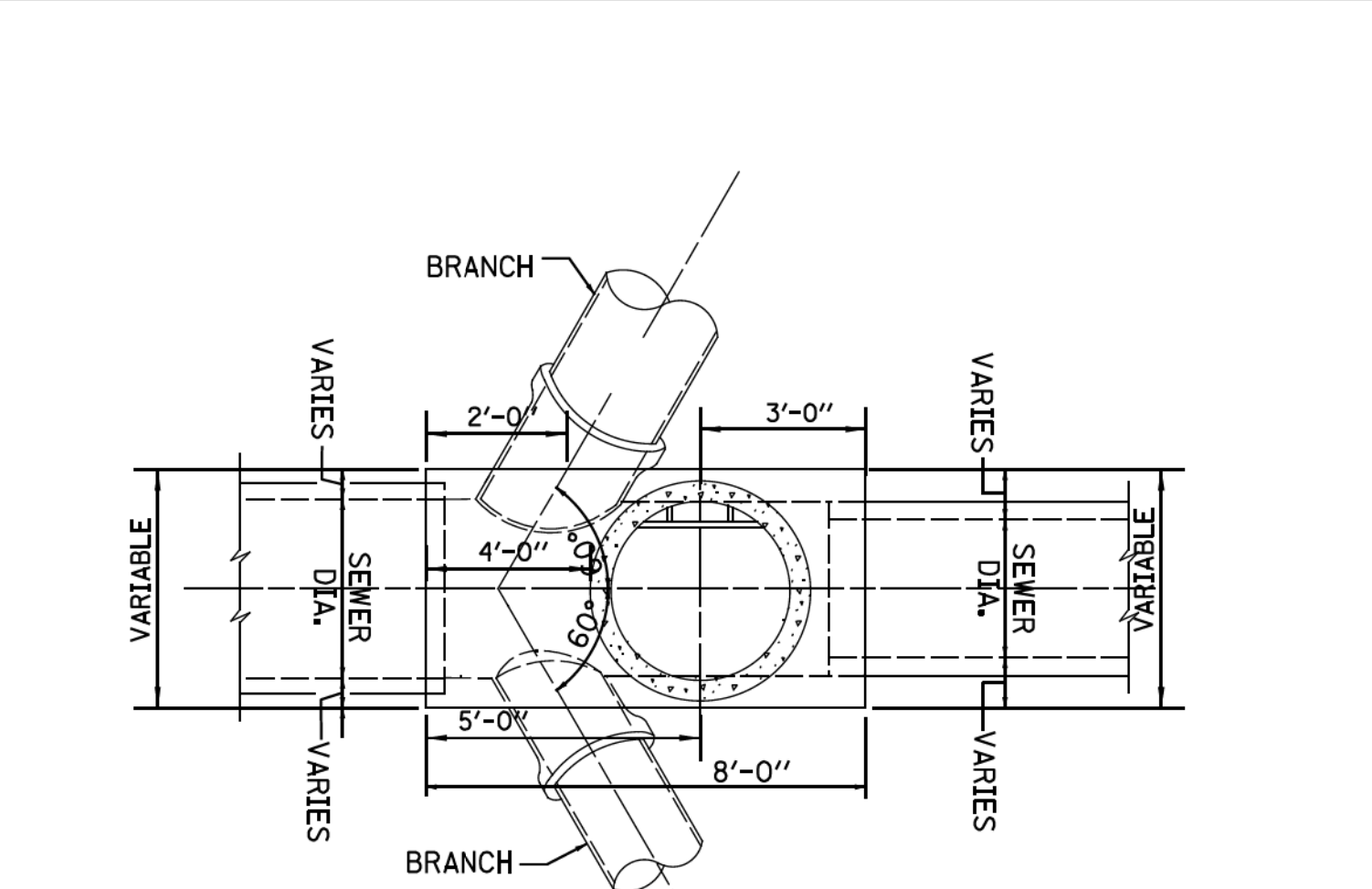
Not To Scale

Addendum 03,
12/02/24
New Sheet



SECTION A-A
TYPE "B" MANHOLE
FOR SEWERS 24" DIA. & SMALLER

Not To Scale



TYPICAL REVERSE TYPE "B" MANHOLE

Not To Scale

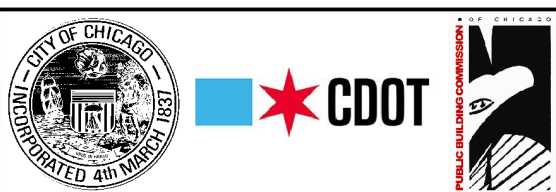
- NOTES:
1. CONTRACTOR MUST SUBMIT SHOP DRAWINGS OF ALL PROPOSED MANHOLE CONFIGURATIONS FOR APPROVAL PRIOR TO SUBMISSION OF MATERIAL ORDERS.
 2. CONNECTION BELLS MAY BE INSTALLED AT MANUFACTURER'S SITE, OR MORTARED IN PLACE IN THE FIELD. SEE SHEET A.J2 FOR FURTHER CONFIGURATION DETAILS.
 3. BASES MUST BE PRECAST WITH THE CORRECT NUMBER OF PIPE OPENINGS, CORRESPONDING TO THE REPRESENTATION IN THE PLAN AND PROFILE SHEETS.
 4. PATCHING, BRICKING, OR OTHER MATERIAL METHODS OF CLOSING UNUSED HOLES WILL NOT BE ACCEPTED.
 5. 6" MINIMUM GRANULAR EMBEDMENT UNDER ALL PRECAST MANHOLE BASES
 6. ALL PIPE AND FITTINGS 24 INCHES IN DIAMETER AND LARGER MUST BE CLASS III, IV AND V REINFORCED CONCRETE PIPE AS SPECIFIED IN THE SPECIFICATIONS FOR "REINFORCED CONCRETE CULVERT STORM DRAIN, AND SEWER PIPE," A.S.T.M. DESIGNATION C76, TABLE III, IV AND V, WALL B OR WALL C WITH CIRCULAR OR ELLIPTICAL REINFORCEMENT

STANDARD REVISIONS	
DATE	DESCRIPTION
9/19/17	APPROVED PLAN

PERCENT COMPLETE	DATE
30	
60	
75	
90	
100	
BULLETIN	

CITY OF CHICAGO DEPARTMENT OF WATER MANAGEMENT BUREAU OF ENGINEERING SERVICES		DRAWN: <input type="checkbox"/> DESIGNED: <input type="checkbox"/> A.10 CHECKED: <input type="checkbox"/> REVIEWED: <input type="checkbox"/>
TYPE "B" MANHOLE		OF _____ PN _____

MODEL: Default
FILE NAME: C:\CH2021\20210473\Design\00\Project_16_102.tbl S:\WPA_102.tbl S:\sh-standards and details_01.dgn
CDWM_Details.cel 6/25/2020 9:49:19 AM



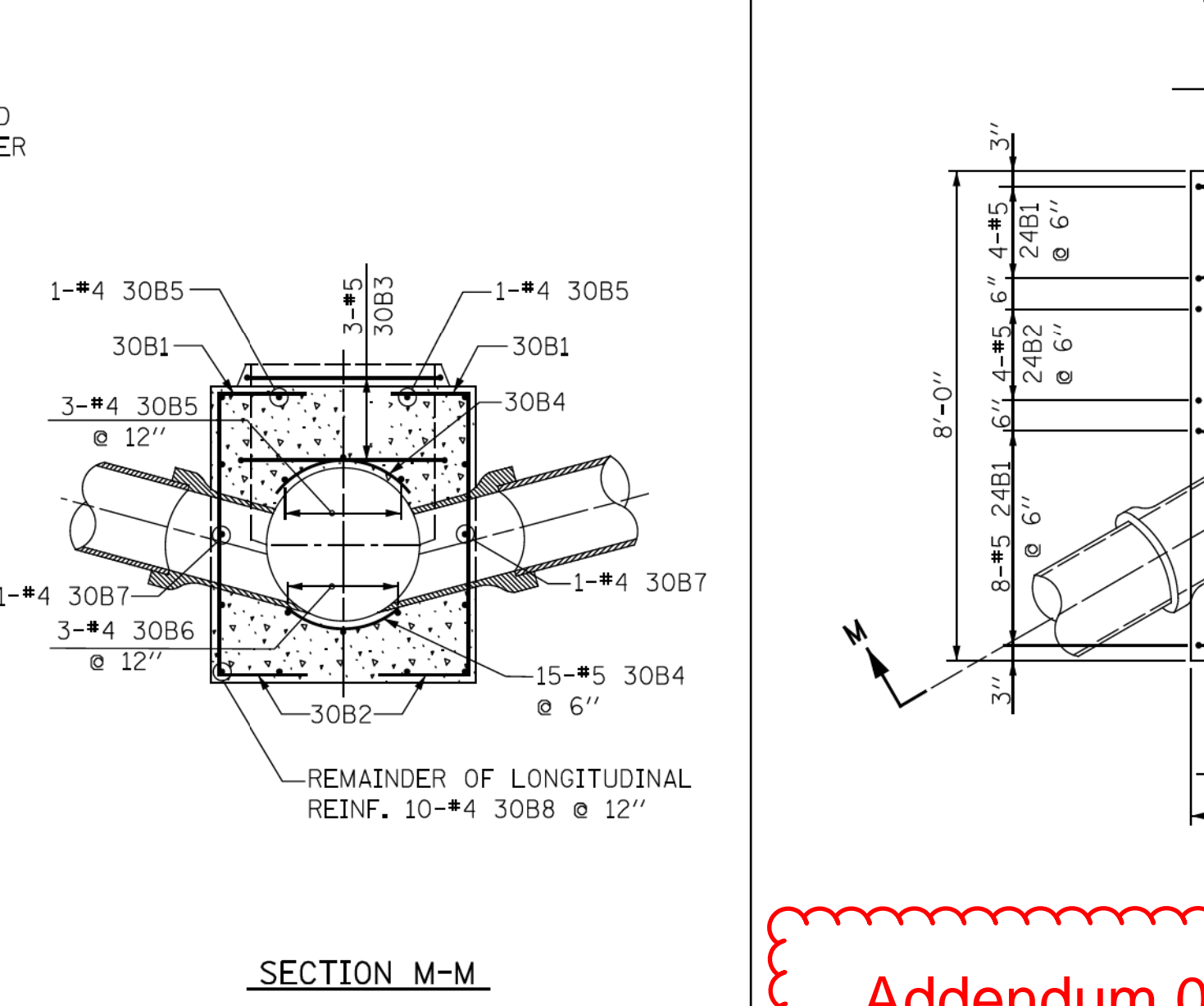
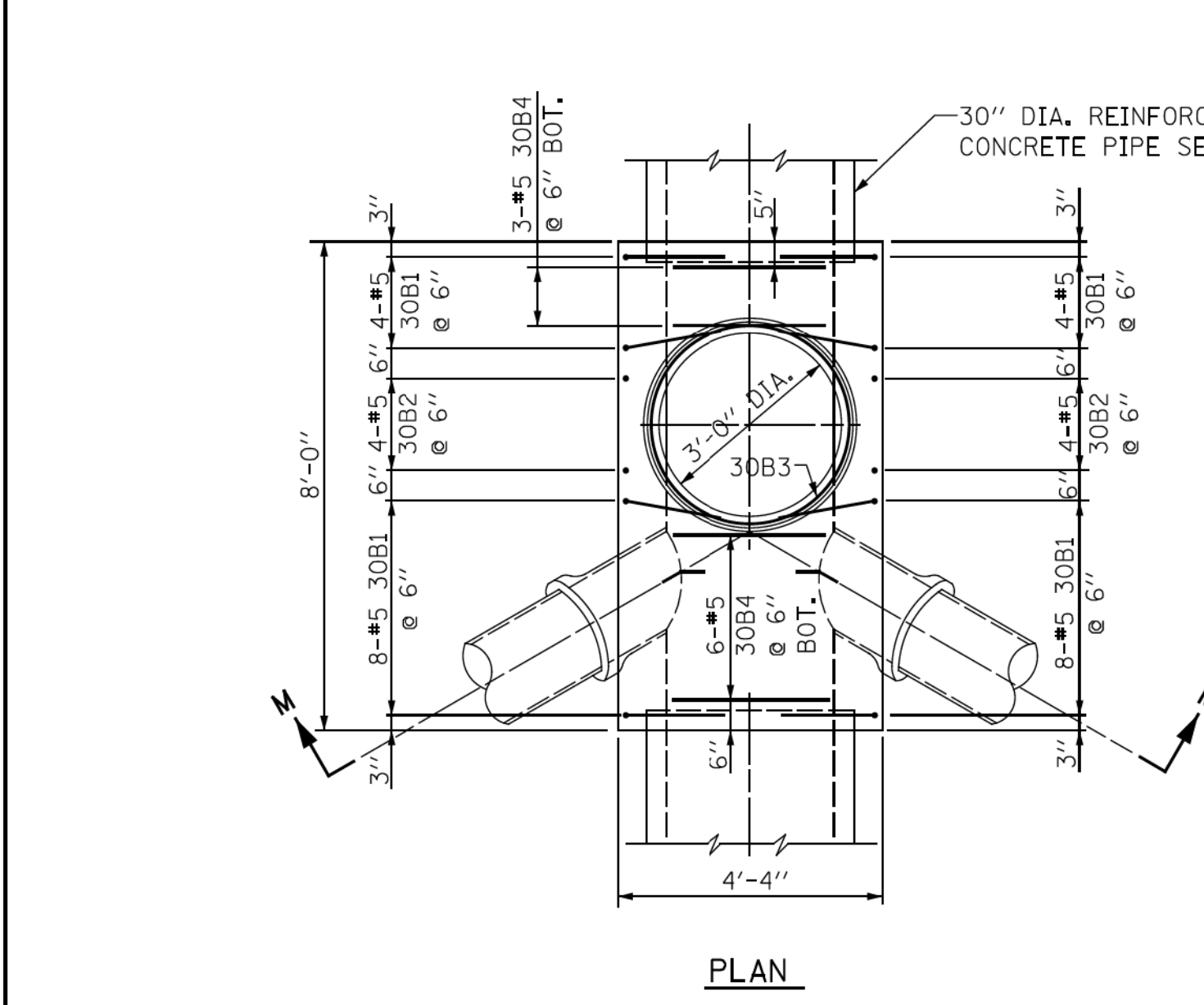
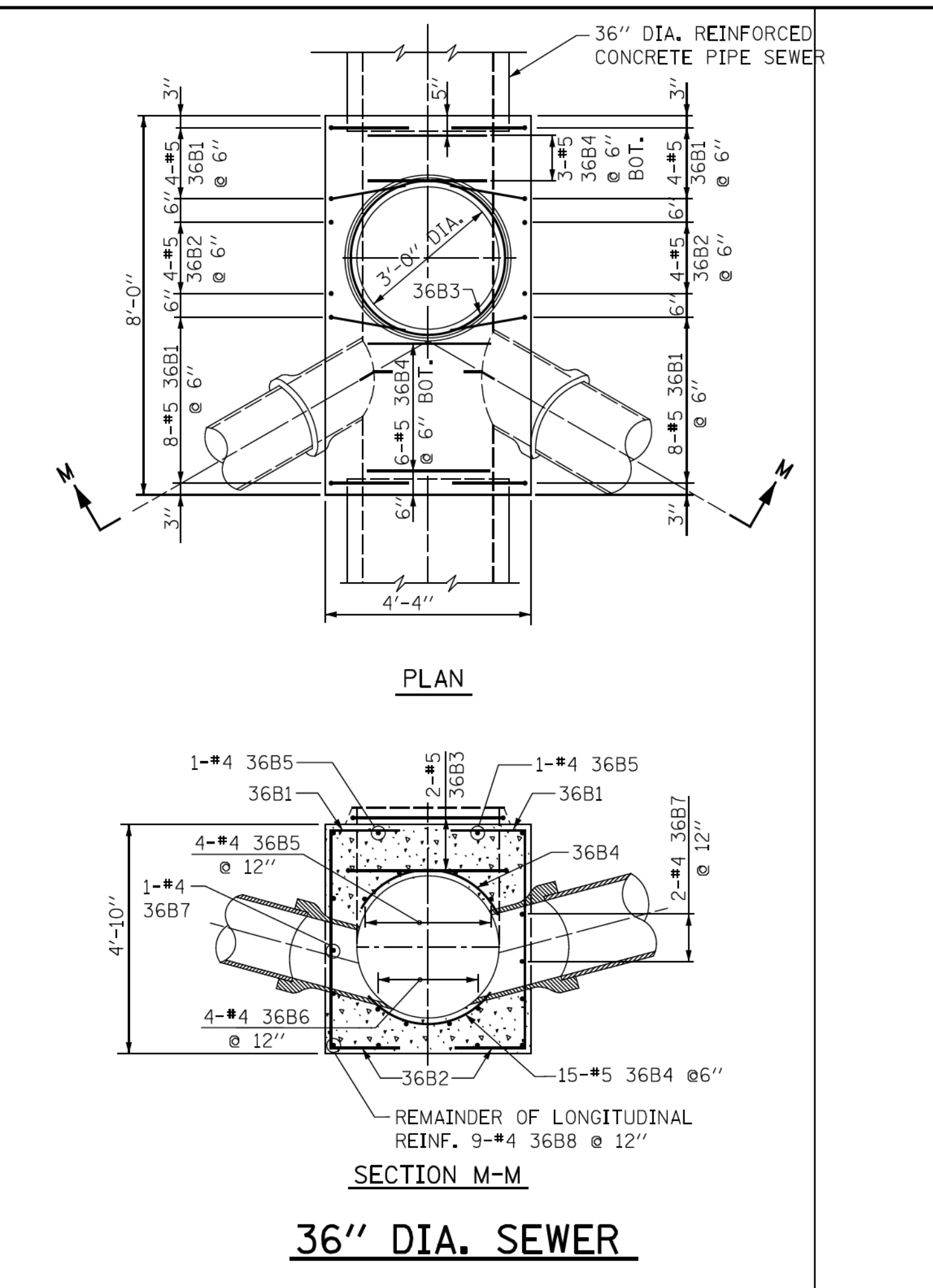
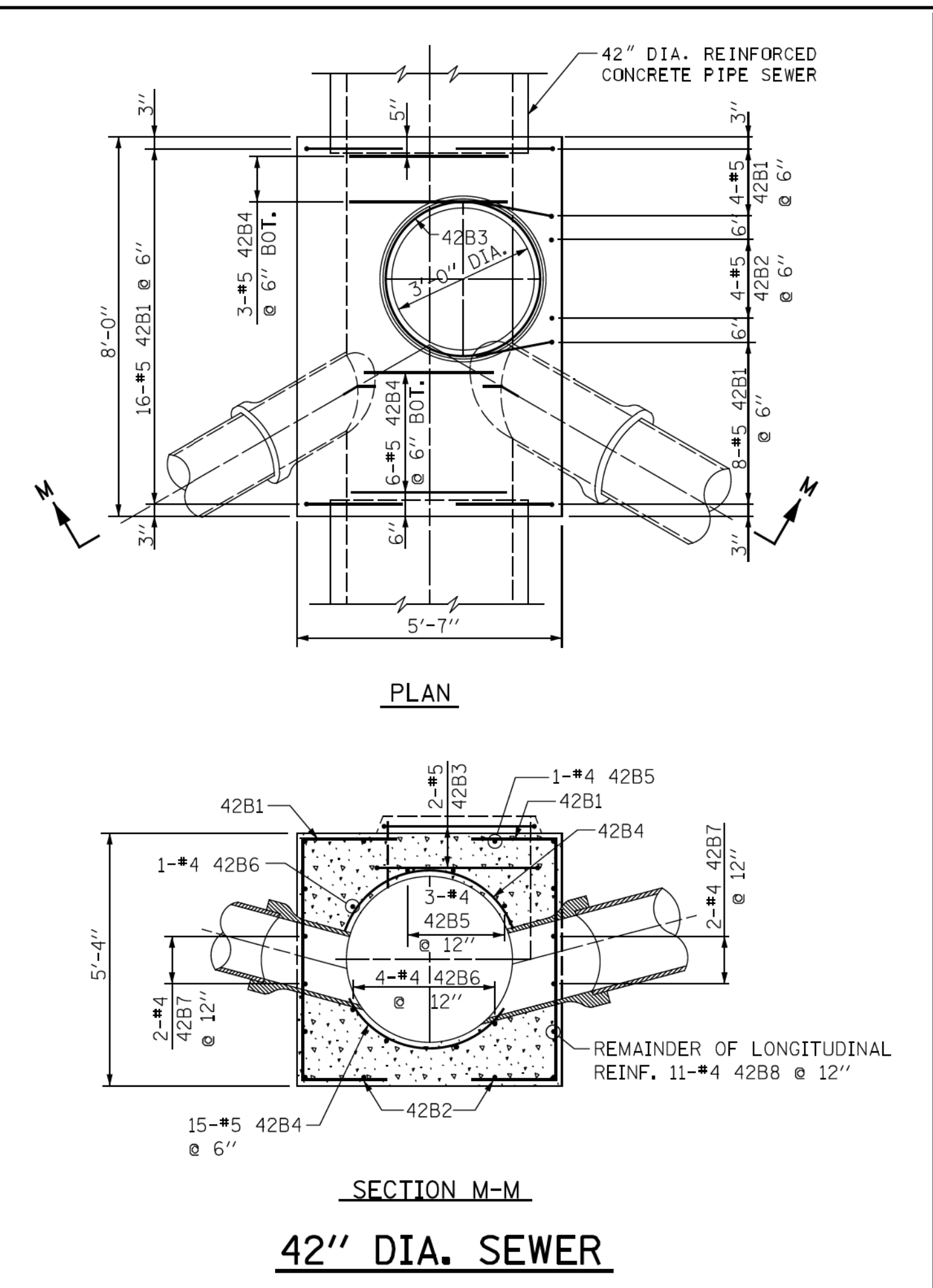
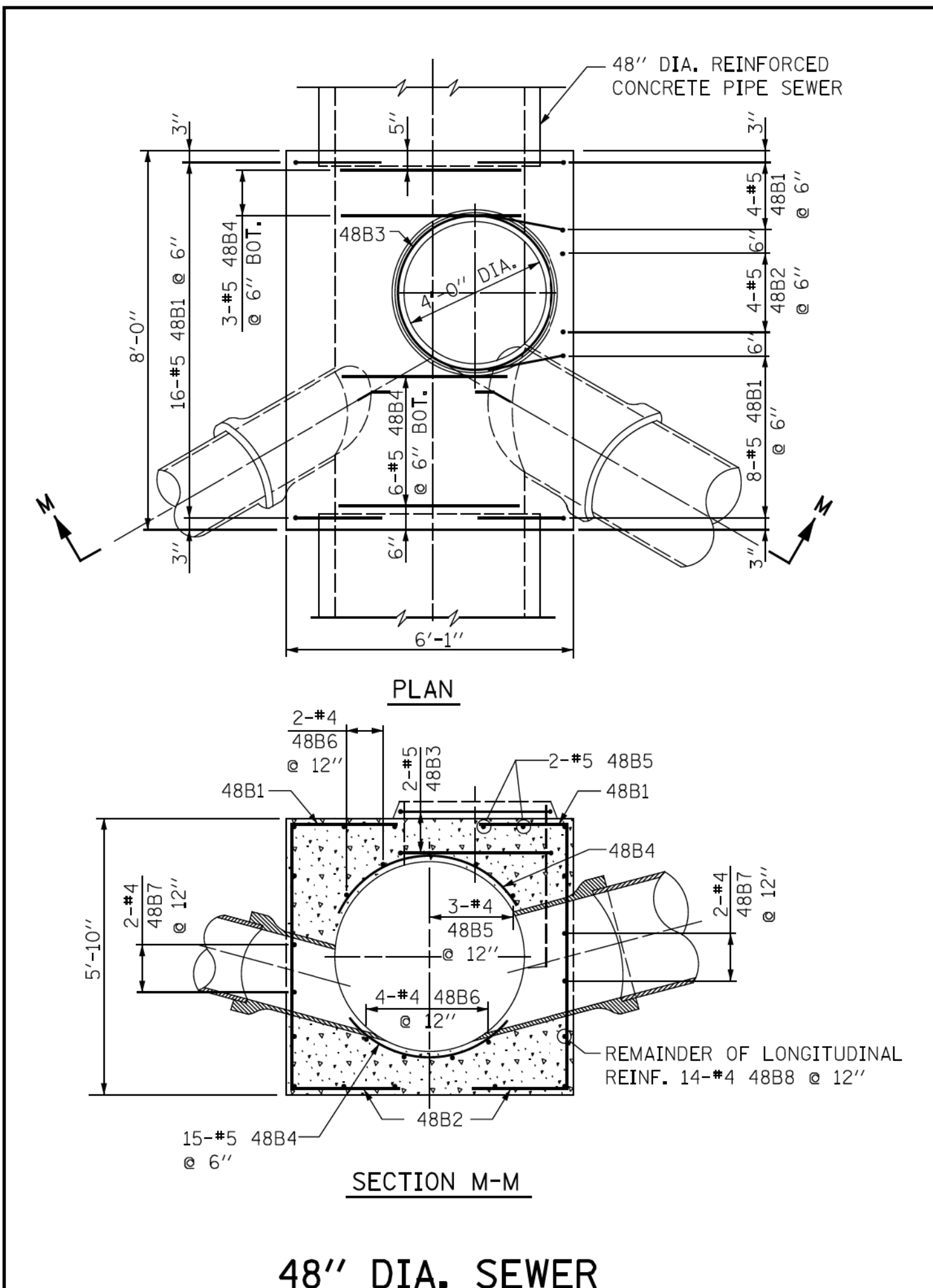
USER NAME = 2138	DESIGNED - JO	REVISED -
PLOT SCALE = 20.0000' / in.	DRAWN - MA	REVISED -
PLOT DATE = 12/2/2024 - 2:20:42 PM	CHECKED - TNS	REVISED -
	DATE - 12/2/2024	ISSUE FOR BID - 11/06/2024

CITY OF CHICAGO
DEPARTMENT OF TRANSPORTATION

CDWM SEWER DETAIL

SCALE: 1"=20' SHEET OF SHEETS STA. TO STA.

F.A. RTE.	SECTION	COUNTY	TOTAL SHEETS	SHEET NO.
			31	31A
CONTRACT NO. C1616				
ILLINOIS FED. AID PROJECT				



- NOTES:**
- CONTRACTOR MUST SUBMIT SHOP DRAWINGS OF ALL PROPOSED MANHOLE CONFIGURATIONS FOR APPROVAL PRIOR TO SUBMISSION OF MATERIAL ORDERS.
 - CONNECTION BELLS MAY BE INSTALLED AT MANUFACTURER'S SITE, OR MORTARED IN PLACE IN THE FIELD. SEE SHEET A.11 FOR FURTHER CONFIGURATION DETAILS.
 - BASES MUST BE PRECAST WITH THE CORRECT NUMBER OF PIPE OPENINGS, CORRESPONDING TO THE REPRESENTATION IN THE PLAN AND PROFILE SHEETS.
 - PATCHING, BRICKING, OR OTHER MATERIAL METHODS OF CLOSING UNUSED HOLES WILL NOT BE ACCEPTED.
 - ALL PIPE AND FITTINGS 24 INCHES IN DIAMETER AND LARGER MUST BE CLASS III, IV AND V REINFORCED CONCRETE PIPE AS SPECIFIED IN THE SPECIFICATIONS FOR "REINFORCED CONCRETE CULVERT STORM DRAIN, AND SEWER PIPE," A.S.T.M. DESIGNATION C76, TABLE III, IV AND V, WALL B OR WALL C WITH CIRCULAR OR ELLIPTICAL REINFORCEMENT

Addendum 03,
12/02/24
New Sheet

STANDARD REVISIONS		PERCENT COMPLETE	DATE	CITY OF CHICAGO DEPARTMENT OF WATER MANAGEMENT BUREAU OF ENGINEERING SERVICES	DRAWN BY RESIGNED CHECKED BY REVIEWED	SHEET NO. A.11
DATE	DESCRIPTION					
9/19/17	revision	30		REINFORCEMENT FOR TYPE "B" MANHOLE BASES	OF	PN
		60				
		75				
		90				
		100				
BULLETIN						

MODEL: Default
FILE NAME: C:\CH2021\20210473\Design\00\Project_16_102204_S1\WPA_102204_S1-sh-Standard.s and Detail_01.dgn
CDWM_Details.cpl 6/25/2020 9:29:14 AM



USER NAME = 2138	DESIGNED - JO	REVISED -
PLOT SCALE = 20.0000" / in.	DRAWN - MA	REVISED -
PLOT DATE = 12/2/2024 - 2:21:23 PM	CHECKED - TNS	REVISED -
	DATE - 12/2/2024	ISSUE FOR BID - 11/06/2024

**CITY OF CHICAGO
DEPARTMENT OF TRANSPORTATION**

CDWM SEWER DETAIL

SCALE: 1"=20' SHEET OF SHEETS STA. TO STA.

F.A. RTE.	SECTION	COUNTY	TOTAL SHEETS	SHEET NO.
		COOK	31	31B
CONTRACT NO. C1616				
ILLINOIS FED. AID PROJECT				