



# PUBLIC BUILDING COMMISSION of Chicago

**Brandon Johnson**

Mayor

**Ray Giderof**

Acting Executive Director





# HOUSEKEEPING ITEMS

## While we wait...

### Please **MUTE** your computers and/or cellphones

- Press \*6 to unmute (if asked to speak)

### Please **CHANGE** your screen name

- Use 'Your Name (Company Name (or Initials))'  
EXAMPLE: Patricia Montenegro (PBC)

### Please **ADD** your name to Chat

- Use 'Your Name|Company Name (or Initials)'  
EXAMPLE: Patricia Montenegro (PBC)

### Please **WAIT** for Q&A to ask questions

- Q&A session will be at the end of each meeting
- Feel free to use the 'Chat' feature







**Chicago Department of Transportation  
Capital Program  
Alleys (Various Locations) – Package 2  
C1610**

**Pre-Bid and Technical Review Meeting**  
July 10, 2024 at 2:00pm

# AGENDA

Introductions

---

Procurement Details

---

Compliance

---

Technical Review

---

Q&A





# Introductions

# INTRO

PBC

---

CDOT & Partners

---

General Contractors

---

Sub-Contractors/Suppliers

---





# Procurement Details

## PROJECT OVERVIEW

### Project Locations

- Project No. 22163A – N. Moody Ave. – (Ward 38)
- Project No. 22163B – W. Touhy Ave. – (Ward 49)
- Project No. 22163C – W. Cullom Ave. – (Ward 47)
- Project No. 22163D – N. Lotus Ave. – (Ward 45)
- Project No. 22163E – N. Sawyer Ave. – (Ward 35)
- Project No. 22163F – W. School St. – (Ward 30)
- Project No. 22163G – W. George St. – (Ward 35)
- Project No. 22163H – W. Eastwood Ave. – (Ward 38)
- Project No. 22163I – W. Argyle St. – (Ward 45)



## PROJECT OVERVIEW

### General Scope of Work:

The program includes reconstruction of alley sewers, subgrade and pavement utilizing recycled construction materials and methods implemented by the City of Chicago, full depth alley pavement reconstruction of City of Chicago alleys. In addition, the Work includes proper handling and disposal of onsite material, portland cement concrete base course, hot-mix asphalt, surface course, sewer and drainage structures, sewer cleaning and televising, vortex restrictors, concrete curb and gutter, concrete sidewalks and ADA Ramps various depths, concrete driveways, concrete garage aprons, concrete alleys, premolded rubber speed humps, permeable concrete block pavers, bedding & void opening aggregates for permeable concrete block pavers, geotechnical fabric, topsoil, and hydraulic seeding.

Contractor will be required to prepare a Phasing and Logistics Plan for review and approval by CDOT and PBC, prior to the mobilization and commencement of any Work. On site construction work at each alley location must be completed within 45 calendar days from commencement.

## PROJECT OVERVIEW

### Time of Completion

#### E. Time of Completion

Substantial Completion must be achieved no later than November 29, 2024. Schedule Milestones must be completed as follows:

Milestone Descriptions	Milestone Dates
<b>Schedule Milestone #1: Mobilization</b> <ul style="list-style-type: none"><li>Pre-Construction, including Construction Submittals, Material and Equipment Procurement, Schedule Preparation, Mobilization, Utility Coordination, etc.</li></ul> (Start no sooner than August 1, 2024)	8/31/2024
<b>Substantial Completion</b> <ul style="list-style-type: none"><li>Alley reconstruction and associated work.</li></ul> (Start no sooner than July 31, 2024)	11/29/2024

### Liquidated Damages

- **\$500.00 per day** – For failure to achieve Substantial Completion
- **\$500.00 per day** - For failure to achieve Schedule Milestone Date(s)



# Procurement Details

## AVAILABILITY OF DOCUMENTS

### PBC Current Opportunities Page

<https://www.pbcchicago.com/opportunities/cdotalleys-package2/>

### Online Planroom

[Cross Rhodes Print & Technologies Planroom](#)

### Printer Contact Information

Cross Rhodes Reprographics, Inc. d/b/a

Cross Rhodes Print & Technologies

50 Eisenhower Lane North

Lombard, Illinois 60148

Contact Name: Kristy Weber

Telephone Number: (630) 963-4700

E-Mail: [orders@x-rhodes.com](mailto:orders@x-rhodes.com)

#### BOOK 1

- Introduction
- General Project Overview
- Submission Requirements

##### HIGHLIGHTS

- Bid Form
- MBE/WBE/EEO Goals
- Community Area Map

#### BOOK 2

- Standard Terms and Conditions for Contracts

#### BOOK 3

- Technical Specifications

+ CONSTRUCTION  
DRAWINGS

# Procurement Details

## AVAILABILITY OF DOCUMENTS

### Assist Agencies

<https://www.pbcchicago.com/doing-business/assist-agencies/>



#### PUBLIC BUILDING COMMISSION OF CHICAGO'S ASSIST AGENCIES

Assist Agencies are comprised of Chamber of Commerce and Not-for-Profit agencies that represent the interests of small, minority- and/or women-owned businesses. If your agency would like to be added to the PBC's Assist Agencies list, please send an email to [patricia.montenegro@cityofchicago.org](mailto:patricia.montenegro@cityofchicago.org).

**African American Contractors Association**  
PO Box #19670  
Chicago, IL 60619  
Omar Shareef  
312-915-5960  
aacanafassoc@gmail.com  
www.aacanafi.org

**Black Contractors United**  
155 North Michigan Avenue  
Suite 300  
Chicago, IL 60601  
Shynetta Dockery  
773-617-5672  
bcu@blackcontractorsunited.com  
blackcontractorsunited.com

**CANDO Corporation**  
1633 S Michigan Ave  
Chicago, IL 60615  
LaVerne Hall  
(312) 488-9338  
LHall@candocorp.net

**Chatham Business Association: Small Business Development, Inc.**  
800 E 78th St  
Chicago, IL 60619  
Melinda Kelly  
(773) 994-5006  
melindakelly@cbaworks.org  
cbaworks.org

**Chicago Cook Workforce Partnership**  
69 W Washington Street  
Suite 2860  
Chicago, IL 60602  
Marissa Lewis  
mlewis@chicookworks.org  
(312) 603-0200  
chicookworks.org

**Chicago Minority Supplier Development Council**  
216 W Jackson Boulevard  
Suite 600 Chicago, IL 60606  
Debra Jennings-Johnson  
(312) 755-8880  
info@ChicagoMSDC.org  
chicagoMSDC.org

**Chicago Urban League**  
4510 S Michigan Ave, 3rd Floor  
Chicago, IL 60653  
Kelly Evans  
(773) 451-3547  
kevans@chiul.org  
chiul.org

**Chicago Women in Trades**  
2444 W 16th St  
Chicago, IL 60608  
Jayne Vellinga  
(312) 942-1444  
jvellinga@cwit2.org  
chicagowomenintradess2.org

**ConstructConnect**  
3825 Edwards Road, #800  
Cincinnati, OH 45209  
Amanda Beyer  
(513) 458-5837, Extension 5108336  
amanda.beyer@constructconnect.com  
ConstructConnect.com

**Construction Business Development Center at Prairie State College**  
202 S Halsied St  
Chicago Heights, IL 60411  
Cathy Svetanoff  
(708) 709-3568  
cvsvetanoff@prairiestate.edu  
prairiestate.edu

**Federation of Women Contractors**  
4210 W Irving Park Rd  
Chicago, IL 60641  
Jaemie Neely  
(312) 360-1122  
info@fwcchicago.com  
fwcchicago.com

**HIRE360 Chicago**  
2301 S Lake Shore Drive  
Lakeside Center, Chicago, IL 60616  
Deborah Whitaker  
(312) 575-2500  
dwhitaker@hire360chicago.com  
bids@hire360chicago.com

**Hispanic American Construction Industry Association**  
650 W Lake St, #415  
Chicago, IL 60661  
Ivette Trevino  
(312) 575-0389  
itrevino@haciaworks.org  
haciaworks.org

**Illinois Black Chamber of Commerce**  
411 Hamilton Blvd, #1404  
Peoria, IL 61602  
Larry Ivory & Kanyatta Fisher  
(309) 740-4430  
larryivory@illinoisblackchamber.org,  
kfisher@ibcc.org  
illinoisblackchamber.org

**Rainbow/PUSH Coalition**  
930 E 50th St  
Chicago, IL 60615  
John Mitchell  
(773) 256-2766  
jmitchell@rainbowpush.org  
rainbowpush.org

**South Shore Chamber, Inc.**  
1750 E 71st St  
Chicago, IL 60649  
Tonya Trice  
(773) 955-9508  
ttrice@southshorechamberinc.org  
southshorechamberinc.org



**Women's Business Development Center**  
8 S Michigan Ave, #400  
Chicago, IL 60603  
Donna Beasley  
(312) 853-3477  
dbeasley@wbdc.org  
wbdc.org

**U.S. Minority Contractors Association**  
1250 Grove Ave, #200  
Barrington, IL 60010  
Larry Bullock  
(847) 852-5010  
larry.bullock@usminoritycontractors.org  
usminoritycontractors.org

**Women Construction Owners & Executives**  
308 Circle Ave  
Forest Park, IL 60130  
Mary Kay Monaghan  
(708) 366-1250  
mkm@mkmservices.com  
wcoesa.org



## TECH REVIEW MEETING

### Date/Time

July 10, 2024 at 2:30 p.m.

(Immediately following this meeting)

## SITE VISIT

None has been scheduled.

### Notwithstanding

- Failure of the Bidders to become familiar with the Project shall not relieve or alter the Bidder's responsibility for completing the Work as required by the Contract Documents.

# Procurement Details

## REQUEST FOR INFORMATION (RFI'S)

### Sole Point of Contact

Patricia Montenegro, Contract Officer

[patricia.montenegro@cityofchicago.org](mailto:patricia.montenegro@cityofchicago.org)

### Deadline

Current: Friday, July 19, 2024 by 4:00 p.m.

### Addenda

None issued to date



# Procurement Details

## BID DUE DATE/TIME

### Due Date/Time

Tuesday, July 30, 2024 at 11:00 a.m.

*(Subject to Change via Addendum)*

### Virtual Meeting Details

**NOTE:** The Bid Opening will be streamed **LIVE** and will be **RECORDED** and **AVAILABLE** on our website for viewing on PBC's Home Page [www.pbcchicago.com](http://www.pbcchicago.com) and on the Current Opportunity page for this project found here: <https://www.pbcchicago.com/opportunities/cdotalleys-package2/>

## BID SUBMISSION REQUIREMENTS

### Electronic Submission

- **One** complete copy of bid document
- Original Signatures ([blue ink](#)) or Digital Signature
- Include Bid Bond
- Include Master Bid Form (Master Bid Tab, ALL NINE Schedule of Prices, Award Criteria sheet) in **EXCEL and PDF** format separately within email

NOTE: The pdf documents should be searchable PDF form and not a scanned copy.

- Email to: [bids@pbcchicago.com](mailto:bids@pbcchicago.com) **AND** [patricia.montenegro@cityofchicago.org](mailto:patricia.montenegro@cityofchicago.org)

### If Hardcopy Submission Needed

- *Bidders who are unable to submit their bids electronically may request instruction for submitting a “hard copy” of their bid in writing to the Contract Officer: Patricia Montenegro at: [patricia.montenegro@cityofchiago.org](mailto:patricia.montenegro@cityofchiago.org)*



## PRE-AWARD MEETING

### Date/Time

Wednesday, July 31, 2024 at 9:30 a.m. (Virtual)  
(Subject to Change via Addendum)

## NOTICE OF AWARD

### Anticipated Schedule

- Anticipated release of the Notice of Award (NOA) is [August 2024](#) following the PBC Board of Commissioners Meeting
- Successful General Contractor will be required to provide compliant Certificate of Insurance and Payment and Performance Bond within 7 days of NOA issuance



# Book 1 & 2 Highlights



# Highlights

## Budget, Staffing, and Additional Requirements

- Estimated Construction Budget (Book 1, Page 2) – \$5,100,000 - \$5,600,000
- Mandatory Project Staffing (Book 1, Page 4)
- Scheduling Software Requirements (Book 1, Page 4)
- Liquidated Damages (Book 1, Page 4)
- Prevailing Wage Rates (Book 1, Page 5 and Page 56)

# Highlights

## Joint Venture Opportunities

- Schedule B – Joint Venture Affidavit
- (Book 1, Page 41)
  - ❖ JV Agreement
  - ❖ Certification Letter

### SCHEDULE B - Joint Venture Affidavit (1 of 3)

*This form is not required if all joint venturers are MBE/Non-MBE or WBE/Non-WBE firms. In such case, however, a written joint venture agreement among the MBE/Non-MBE or WBE/Non-WBE firms should be submitted. Each MBE/WBE joint venturer must also attach a copy of their current certification letter.*

A. Name of joint venture \_\_\_\_\_

B. Address of joint venture \_\_\_\_\_  
\_\_\_\_\_

C. Phone number of joint venture \_\_\_\_\_

D. Identify the firms that comprise the joint venture

\_\_\_\_\_  
\_\_\_\_\_

1. Describe the role(s) of the MBE/WBE firm(s) in the joint venture. (Note that a "clearly defined portion of work" must here be shown as under the responsibility of the MBE/WBE firm.)

\_\_\_\_\_  
\_\_\_\_\_  
\_\_\_\_\_

2. Describe very briefly the experience and business qualifications of each non-MBE/WBE joint venturer.

\_\_\_\_\_  
\_\_\_\_\_  
\_\_\_\_\_

E. Nature of joint venture's business

\_\_\_\_\_  
\_\_\_\_\_

F. Provide a copy of the joint venture agreement.

G. Ownership: What percentage of the joint venture is claimed to be owned by MBE/WBE? \_\_\_\_\_%

H. Specify as to:

1. Profit and loss sharing \_\_\_\_\_%

2. Capital contributions, including equipment \_\_\_\_\_%

3. Other applicable ownership interests, including ownership options or other agreements which restrict ownership or control.

\_\_\_\_\_



# Highlights

## THE BID FORM

<b>PROJECT NAME:</b>	Chicago Department of Transportation ('CDOT') - Alleys (Various Locations) Package 2		
<b>LOCATION:</b>	Various Locations		
<b>CONTRACT NO:</b>	C1610		
<b>PROJECT NO(S):</b>	22163A-I (9 Locations)		
<b>FIRM NAME:</b>			
<b>BID FORM</b>			
Bidders MUST use the Excel File available to bidders from the Cross Rhodes Print & Technologies Planroom: ( <a href="http://www.x-rhodesplanroom.com">www.x-rhodesplanroom.com</a> ) or the PBC Website: ( <a href="https://pbcchicago.com/opportunities/cdotalleys-package2/">https://pbcchicago.com/opportunities/cdotalleys-package2/</a> ) to ensure accurate calculations for the Total Base Bid and Total Award Criteria. Please follow instructions on the Bid Form.			
<b>MOODY</b>	<b>LINE</b>	<b>DESCRIPTION</b>	<b>AMOUNT</b>
		22163A - Moody	
	1	Base Work Only	\$ -
	2	Commission's Contract Contingency	\$ 172,000.00
	3	Sitework Allowance	\$ 50,000.00
4	<b>TOTAL BASE BID</b>	<b>\$ 222,000.00</b>	
	Accepted by the Commission		<input type="checkbox"/>
<b>TOUHY</b>	<b>LINE</b>	<b>DESCRIPTION</b>	<b>AMOUNT</b>
		22163B - Touhy	
	5	Base Work Only	\$ -
	6	Commission's Contract Contingency	\$ 82,000.00
	7	Sitework Allowance	\$ 25,000.00
8	<b>TOTAL BASE BID</b>	<b>\$ 107,000.00</b>	
	Accepted by the Commission		<input type="checkbox"/>
<b>CULLOM</b>	<b>LINE</b>	<b>DESCRIPTION</b>	<b>AMOUNT</b>
		22163C - Cullom	
	9	Base Work Only	\$ -
	10	Commission's Contract Contingency	\$ 60,000.00
	11	Sitework Allowance	\$ 25,000.00
12	<b>TOTAL BASE BID</b>	<b>\$ 85,000.00</b>	
	Accepted by the Commission		<input type="checkbox"/>

# Highlights

## THE BID FORM

NOTES/INSTRUCTIONS		
Light Gray	Base Work Only	Base Work Only automatically populates from each Schedule of Prices Worksheet (Line 68)
Light Blue	Contingency(ies)	Amount is fixed and will automatically calculate to determine Total Base Bid (Total of All Alleys)
Light Yellow	Allowance(s)	Amount is fixed and will automatically calculate to determine Total Base Bid (Total of All Alleys)
Maroon	Total Base Bid	Equals Line 1 through 36. Total Base Bid automatically populates.
Blue	Total Award Criteria Figure	Based on Line 37 (Total Base Bid figure). Total Award Criteria Figure (Line 38) automatically populates from Award Criteria Figure Worksheet.

>	<u>Master Bid Tab</u>	Award Criteria Figure	22163A Moody	22163B Touhy	22163C Cullom	22163D Lotus	22163E Sawyer	22163F School	...	+	:	◀
---	-----------------------	-----------------------	--------------	--------------	---------------	--------------	---------------	---------------	-----	---	---	---



**Each Alley has a separate tab (9 TOTAL)**

**Enter your unit pricing for ALL NINE (9) Alleys**

**The Master Bid Form will automatically TOTAL**

# Highlights

## THE BID FORM – SCHEDULE OF PRICES

<b>SCHEDULE OF PRICES</b> CHICAGO DEPARTMENT OF TRANSPORTATION ("CDOT") CAPITAL PROGRAM - ALLEYS (VARIOUS LOCATIONS) - PACKAGE 2 LOCATION: W. TOUHY AVENUE/W. ESTES AVENUE/N. GLENWOOD AVENUE/N. SHERIDAN ROAD CDOT PROJECT NO.: B-3-163/PBC PROJECT NO.: 22163B PBC CONTRACT: C1610 Bidder's pricing for each line item should carry its share of the costs of work, plus its share of overhead and profit. Bidders should avoid nominal pricing for some lines and enhanced pricing for other lines. Bids that the PBC considers to be materially unbalanced will be rejected.							
Line	Code Number	Description	Unit	Estimated Quantity	Unit Price	Cost	
1	*****	EARTH EXCAVATION (SOIL TO CCDD FACILITY)	CU YD	78		\$0.00	
2	*****	EARTH EXCAVATION (SOIL TO LANDFILL)	CU YD	540		\$0.00	
3	44000100	PAVEMENT REMOVAL	SQ YD	45		\$0.00	
4	*****	DRIVEWAY AND ALLEY RETURN PAVEMENT REMOVAL	SQ YD	69		\$0.00	
5	44000300	CURB REMOVAL	LIN FT	103		\$0.00	
6	44000500	COMBINATION CURB AND GUTTER REMOVAL	LIN FT	113		\$0.00	
7	44000600	SIDEWALK REMOVAL	SQ FT	337		\$0.00	
8	CDOT4400020	ALLEY PAVEMENT REMOVAL	SQ YD	1589		\$0.00	
9	*****	GARAGE APRON REMOVAL	SQ FT	984		\$0.00	
10	20700220	HOT-MIX ASPHALT SURFACE REMOVAL, VARIABLE DEPTH	SQ YD	0		\$0.00	
11	31101100	POROUS GRANULAR EMBANKMENT (CA-1)	CU YD	0		\$0.00	
12	20800150	SUB-BASE GRANULAR MATERIAL, TYPE B	CU YD	371		\$0.00	
64	*****	REMOVE AND RELOCATE SIGN PANEL AND POLE ASSEMBLY	EACH	0		\$0.00	
65	*****	HIGH-EARLY-STRENGTH PORTLAND CEMENT CONCRETE BASE COURSE 7"	SQ YD	0		\$0.00	
66	550Z0164C	STORM SEWERS, REINFORCED CONCRETE PIPE, TYPE 2, 30 IN.	LIN FT	0		\$0.00	
67	*****	CIP CONCRETE REDUCER	CU YD	0		\$0.00	
68	<b>TOTAL FOR 22163B/B-3-163 - TOUHY</b>					<b>\$</b>	<b>-</b>

Enter your unit pricing **HERE**

Sheet will automatically **TOTAL HERE**





# Highlights

## THE BID FORM – MASTER BID TOTAL & ADDT'L INFO

LINE	DESCRIPTION	TOTAL AMOUNTS
37	GRAND TOTAL BASE BID - ALL ALLEYS (Total of Lines 4, 8, 12, 16, 20, 24, 28, 32, and 36)	\$ 1,030,000.00
38	GRAND TOTAL AWARD CRITERIA FIGURE - ALL ALLEYS	\$ 1,030,000.00

**SURETY INFORMATION**  
(Provide Legal Name and address of Surety)

Name: \_\_\_\_\_  
Address: \_\_\_\_\_

**BIDDER'S INFORMATION**

Firm Name: \_\_\_\_\_  
Date: \_\_\_\_\_

Enter your Surety & Firm Information HERE

The TOTAL from ALL ALLEYS  
will automatically populate  
HERE

# Highlights

PROJECT NAME: Chicago Department of Transportation ('CDOT') - Alleys (Various Locations) Package 2  
 LOCATION: Various Locations  
 CONTRACT NO: C1610  
 PROJECT NO(S): 22163A-I (9 Locations)

## AWARD CRITERIA FIGURE FORMULA

	FORMULA
Line 1. (Based on Grand Total Base Bid)	\$1,030,000.00
Line 2. Minority Journeyman (Maximum figure 0.70)	
Line 3. Multiply Line 2 by Line 1 by 0.04	\$0.00
	\$1,030,000.00
Line 4. Minority Apprentice (Maximum figure 0.70)	
Line 5. Multiply Line 4 by Line 1 by 0.03	\$0.00
	\$1,030,000.00
Line 6. Minority Laborer (Maximum figure 0.70)	
Line 7. Multiply Line 6 by Line 1 by 0.01	\$0.00
	\$1,030,000.00
Line 8. Female Journeyman (Maximum figure 0.15)	
Line 9. Multiply Line 8 by Line 1 by 0.04	\$0.00
	\$1,030,000.00
Line 10. Female Apprentice (Maximum figure 0.15)	
Line 11. Multiply Line 10 by Line 1 by 0.03	\$0.00
	\$1,030,000.00
Line 12. Female Laborer (Maximum figure 0.15)	
Line 13. Multiply Line 12 by Line 1 by 0.01	\$0.00
	\$1,030,000.00
Line 14. Total of Lines 3, 5, 7, 9, 11, and 13	\$0.00
Line 15. Total Award Criteria	\$1,030,000.00
<b>TOTAL AWARD CRITERIA (Line 15)</b>	<b>\$1,030,000.00</b>

Accepted by the Commission

### BIDDER'S INFORMATION

Firm Name: \_\_\_\_\_  
 Date: \_\_\_\_\_

### NOTES/INSTRUCTIONS

- Prior to submitting your bid electronically, please do the following:
  - Ensure Lines 2, 4, 6, 8, 10, and 12 in the Formula column and the Bidder's Information section have been populated.
  - Save the file.
  - Convert the file to PDF.
  - Include copy of the Award Criteria Figure worksheet within the scanned copy of the bid.
  - Attach the PDF version, along with the scanned copy of the bid.
  - Send email to: bids@pbchicago.com and patricia.montenegro@cityofchicago.org.
- Line 1. (Based on Total Base Bid) automatically populates from Bid Form.
- Bidder is to populate Lines 2, 4, 6, 8, 10, and 12 (fields shaded Light Green).
- Lines 2, 4, 6, 8, 10, and 12 are to be entered in decimals. (ie 5% participation = 0.05, 15% participation = 0.15, 50% participation = .50)
- Line 15. TOTAL AWARD CRITERIA automatically populates.

# AWARD CRITERIA FIGURE



# Highlights

## BASIS OF AWARD

(Book 1, Page 8)

- Award will be made to the Responsible Bidder submitting the **Lowest Grand Total Award Criteria Figure (Line 38 of Bid Form)** whose corresponding Grand Total Base Bid (Line 13 of Bid Form) is within the Available Funds for each street/avenue and is otherwise responsive to all requirements of the Contract Documents.
- Firms are required to **fill out the entire BID FORM** to be considered responsive.
- The Commission reserves the right to reject any and all bids wherever such rejection is in the best interest of the Commission.
- Bids that the PBC considers to be materially unbalanced will be rejected.





# Compliance



## MBE/WBE PARTICIPATION

### MBE/WBE Goals

26%, MBE

6%, WBE

### MBE/WBE Certifications

- City of Chicago
- Cook County

### MBE/WBE Special Conditions

Book 2, Article 23

#### Compliance: Certification

PBC ensures that only certified and experienced firms perform the required services.

**MBE or WBE firms must be certified with the City of Chicago and/or Cook County to be counted as an MBE/WBE firm by the PBC.**



## Award Criteria Figure

Maximum 70%

Minority Journeyworker,  
Apprentice, and;  
Laborer

Maximum 15%

Female Journeyworker,  
Apprentice, and;  
Laborer

## City Residency & Community Hiring

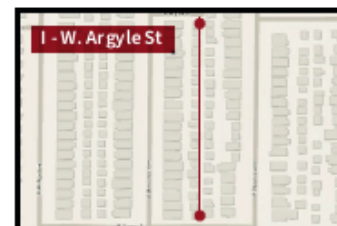
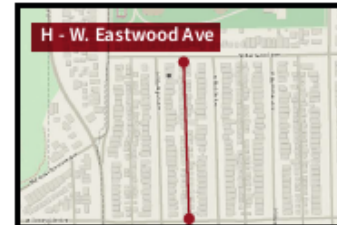
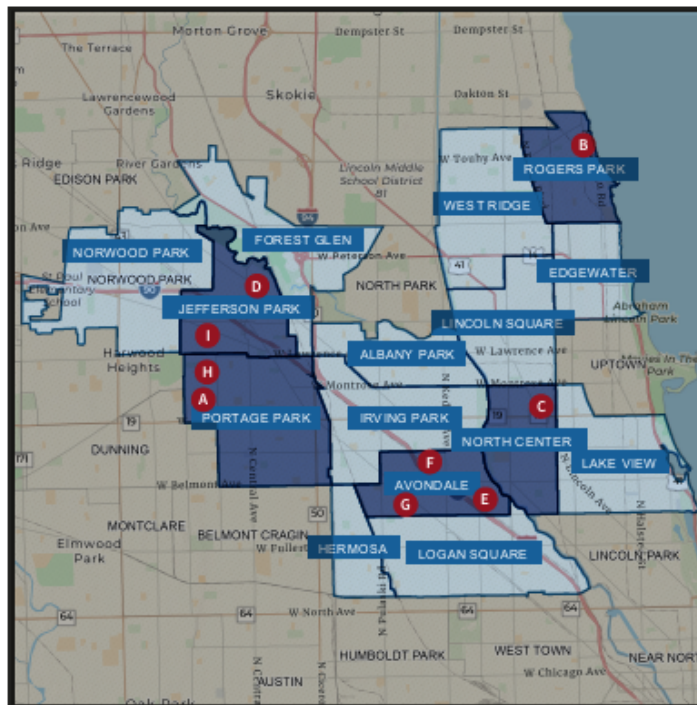
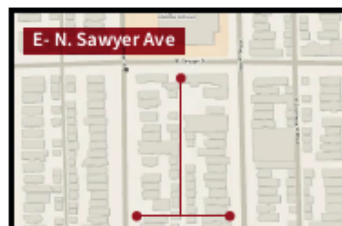
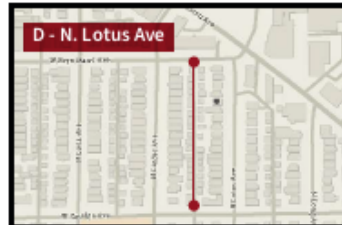
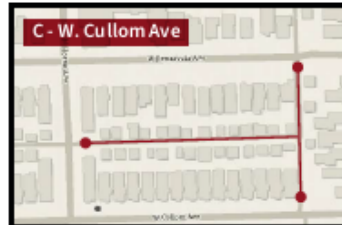
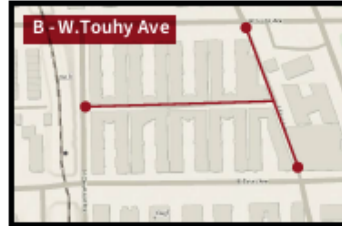
PBC encourages the creation of career opportunities for residents of a project's surrounding community areas, both in the construction trades as well as skilled and unskilled workers.

- ☑ **Community hiring goal:** at least **7.5%** of project labor performed by community residents
- ☑ **City residency goal:** at least **50%** of project labor performed by residents of the city of Chicago





# Compliance



## Community Hiring MAP

### CDOT CAPITAL PROGRAM - ALLEYS (VARIOUS LOCATIONS) - PACKAGE 2

- Project location
- Project Area
- Community Areas



## MBE/WBE COMPLIANCE

### Documentation and Monitoring

- B2Gnow: MBE/WBE Compliance monitoring
- Established Business, Manufacturers, Suppliers, and Brokers
- Schedule D
- Schedule C

# Compliance

**PUBLIC BUILDING COMMISSION OF CHICAGO**

**SCHEDULE D - Affidavit of General Contractor Regarding MBE/WBE Participation (1 of 2)**

Name of Project: \_\_\_\_\_

STATE OF ILLINOIS    }  
                                  } SS  
COUNTY OF COOK    }

In connection with the above-captioned contract, I HEREBY DECLARE AND AFFIRM that I am the

\_\_\_\_\_ Title and duly authorized representative of

\_\_\_\_\_ Name of General Contractor whose address is

in the City of \_\_\_\_\_, State of \_\_\_\_\_ and that I have personally reviewed the material and facts submitted with the attached Schedules of MBE/WBE participation in the above-referenced Contract, including Schedule C and Schedule B (if applicable), and the following is a statement of the extent to which MBE/WBE firms will participate in this Contract if awarded to this firm as the Contractor for the Project.

Name of MBE/WBE Contractor	Type of Work to be Done in Accordance with Schedule C	Dollar Credit Toward MBE/WBE Goals	
		MBE	WBE
		\$	\$
		\$	\$
		\$	\$
		\$	\$
		\$	\$
		\$	\$
		\$	\$
		\$	\$
<b>Total Net MBE/WBE Credit</b>		<b>\$</b>	<b>\$</b>
<b>Percent of Total Base Bid</b>		<b>%</b>	<b>%</b>

The General Contractor may count toward its MBE/WBE goal a portion of the total dollar value of a contract with a joint venture equal to the percentage of the ownership and control of the MBE/WBE partner.

## Schedule D

**PUBLIC BUILDING COMMISSION OF CHICAGO**

**SCHEDULE D - Affidavit of General Contractor Regarding MBE/WBE Participation (2 of 2)**

The Undersigned will enter into a formal agreement for the above work with the above-referenced MBE/WBE firms, conditioned upon performance as Contractor of a Contract with the Commission, and will do so within five (5) business days of receipt of a notice of Contract award from the Commission.

Additionally, the Undersigned certifies to the best of its knowledge and belief that it, its principals and any subcontractors used in the performance of this contract, meet the Agency requirements and have not violated any City or Sister Agency policy, codes, state, federal or local laws, rules or regulations and have not been subject to any debarment, suspension or other disciplinary action by any government agency. Additionally, if at any time the Contractor becomes aware of such information, it must immediately disclose it to the Commission.

BY:

\_\_\_\_\_ Name of Contractor (Print)

\_\_\_\_\_ Signature

\_\_\_\_\_ Date

\_\_\_\_\_ Name (Print)

\_\_\_\_\_ Phone

IF APPLICABLE:

BY:

\_\_\_\_\_ Joint Venture Partner (Print)

\_\_\_\_\_ Signature

\_\_\_\_\_ Date

\_\_\_\_\_ Name (Print)

\_\_\_\_\_ Phone/FAX

MBE \_\_\_\_ WBE \_\_\_\_ Non-MBE/WBE \_\_\_\_



# Compliance

## Schedule C

### PUBLIC BUILDING COMMISSION OF CHICAGO

#### SCHEDULE C - Letter of Intent from MBE/WBE (1 of 2) To Perform As Subcontractor, Subconsultant, and/or Material Supplier

Name of Project: \_\_\_\_\_

Project Number: \_\_\_\_\_

FROM:

\_\_\_\_\_ MBE \_\_\_\_\_ WBE \_\_\_\_\_  
(Name of MBE or WBE)

TO:

\_\_\_\_\_ and Public Building Commission of Chicago  
(Name of Bidder)

The undersigned intends to perform work in connection with the above-referenced project as (check one):

\_\_\_\_\_ a Sole Proprietor                      \_\_\_\_\_ a Corporation  
\_\_\_\_\_ a Partnership                              \_\_\_\_\_ a Joint Venture

The MBE/WBE status of the undersigned is confirmed by the attached Letter of Certification, dated \_\_\_\_\_, In addition, in the case where the undersigned is a Joint Venture with a non-MBE/WBE firm, a Schedule B, Joint Venture Affidavit, is provided.

The undersigned is prepared to provide the following described services or supply the following described goods in connection with the above-named project.

\_\_\_\_\_  
\_\_\_\_\_  
\_\_\_\_\_

The above-described services or goods are offered for the following price, with terms of payment as stipulated in the Contract Documents.

\_\_\_\_\_  
\_\_\_\_\_  
\_\_\_\_\_

### PUBLIC BUILDING COMMISSION OF CHICAGO

#### SCHEDULE C - Letter of Intent from MBE/WBE (2 of 2) To Perform As Subcontractor, Subconsultant, and/or Material Supplier

##### PARTIAL PAY ITEMS

For any of the above items that are partial pay items, specifically describe the work and subcontract dollar amount:

\_\_\_\_\_  
\_\_\_\_\_  
\_\_\_\_\_

If more space is needed to fully describe the MBE/WBE firm's proposed scope of work and/or payment schedule, attach additional sheet(s).

##### SUB-SUBCONTRACTING LEVELS\*

\_\_\_\_\_ % of the dollar value of the MBE/WBE subcontract will be sublet to non-MBE/WBE contractors.  
\_\_\_\_\_ % of the dollar value of the MBE/WBE subcontract will be sublet to MBE/WBE contractors.

**\*If MBE/WBE subcontractor will not be sub-subcontracting any of the work described in this Schedule, a zero (0) must be filled in each blank above. If more than 10% percent of the value of the MBE/WBE subcontractor's scope of work will be sublet, a brief explanation and description of the work to be sublet must be provided.**

The Undersigned (Contractor) will enter into a formal agreement for the above work with the Bidder, conditioned upon its execution of a contract with the Public Building Commission of Chicago, and will do so within five (5) working days of receipt of a notice of Contract award from the Commission.

Additionally, the Undersigned certifies to the best of its knowledge and belief that it, its principals and any subcontractors used in the performance of this contract, meet the Agency requirements and have not violated any City or Sister Agency policy, codes, state, federal or local laws, rules or regulations and have not been subject to any debarment, suspension or other disciplinary action by any government agency. Additionally, if at any time the Contractor becomes aware of such information, it must immediately disclose it to the Commission.

BY:

\_\_\_\_\_  
Name of MBE/WBE Firm (Print)

\_\_\_\_\_  
Date

\_\_\_\_\_  
Phone

IF APPLICABLE:

BY:

\_\_\_\_\_  
Joint Venture Partner (Print)

\_\_\_\_\_  
Date

\_\_\_\_\_  
Phone

\_\_\_\_\_  
Signature

\_\_\_\_\_  
Name (Print)

\_\_\_\_\_  
Signature

\_\_\_\_\_  
Name (Print)

\_\_\_\_\_  
MBE \_\_\_\_\_ WBE \_\_\_\_\_ Non-MBE/WBE \_\_\_\_\_



# PBC CONTACT

**Patricia Montenegro**

[patricia.montenegro@cityofchicago.org](mailto:patricia.montenegro@cityofchicago.org)





# Technical Review



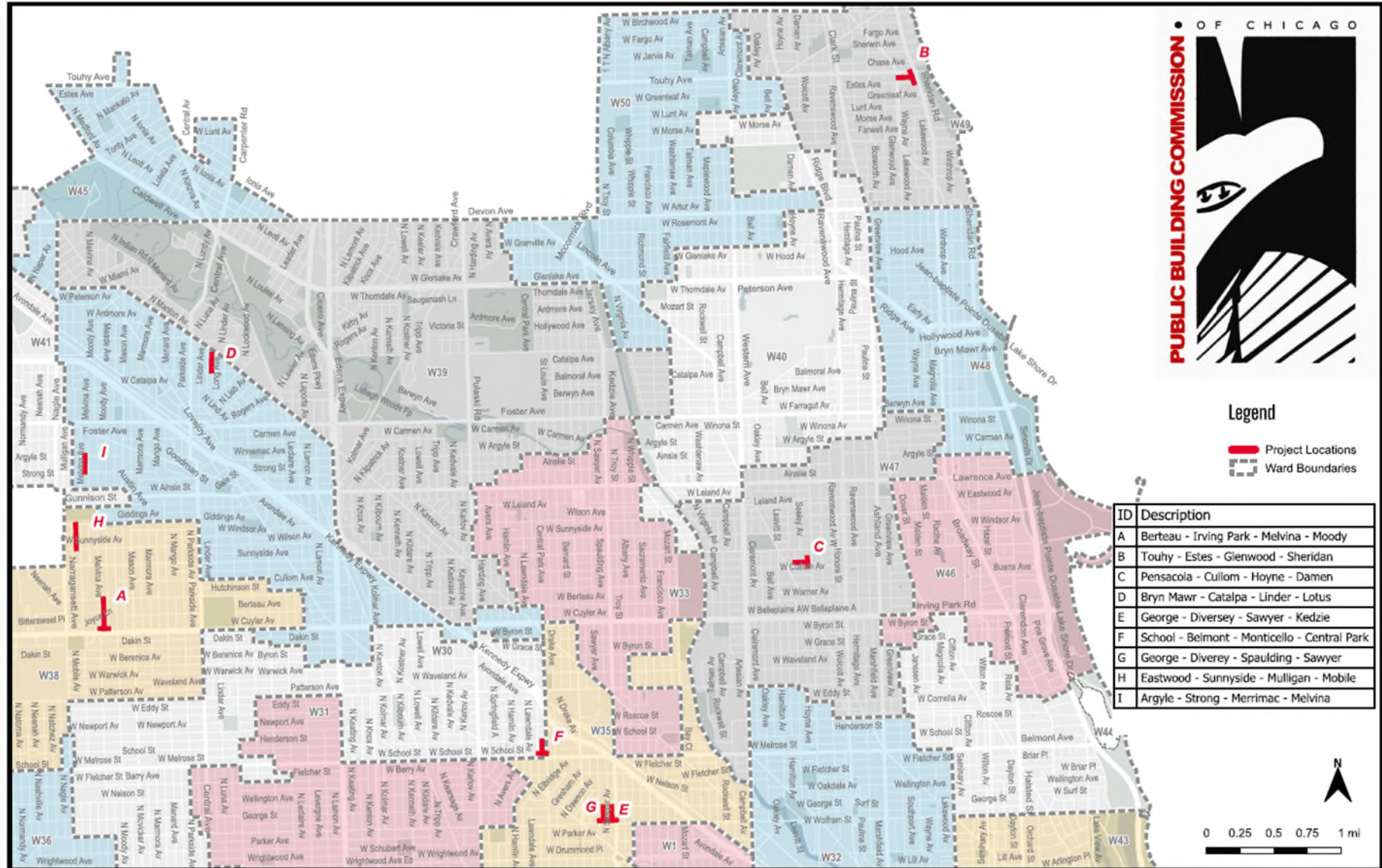
# Project Overview

## Project Locations

- **A** - Berteau - Irving Park; Melvina - **Moody**
- **B** - **Touhy** – Estes; Glenwood – Sheridan
- **C** - Pensacola – **Cullom**; Hoyne – Damen
- **D** - Bryn Mawr – Linder; **Lotus** – Catalpa
- **E** - George – Diversey; **Sawyer** – Kedzie
- **F** - **School** – Belmont; Monticello – Central Park
- **G** - **George** – Diversey; Spaulding – Sawyer
- **H** - **Eastwood** – Sunnyside; Mulligan – Mobile
- **I** - **Argyle** – Strong; Merrimac – Melvina

## Project Overview

- Existing Conditions
- Proposed Conditions
- Special Considerations





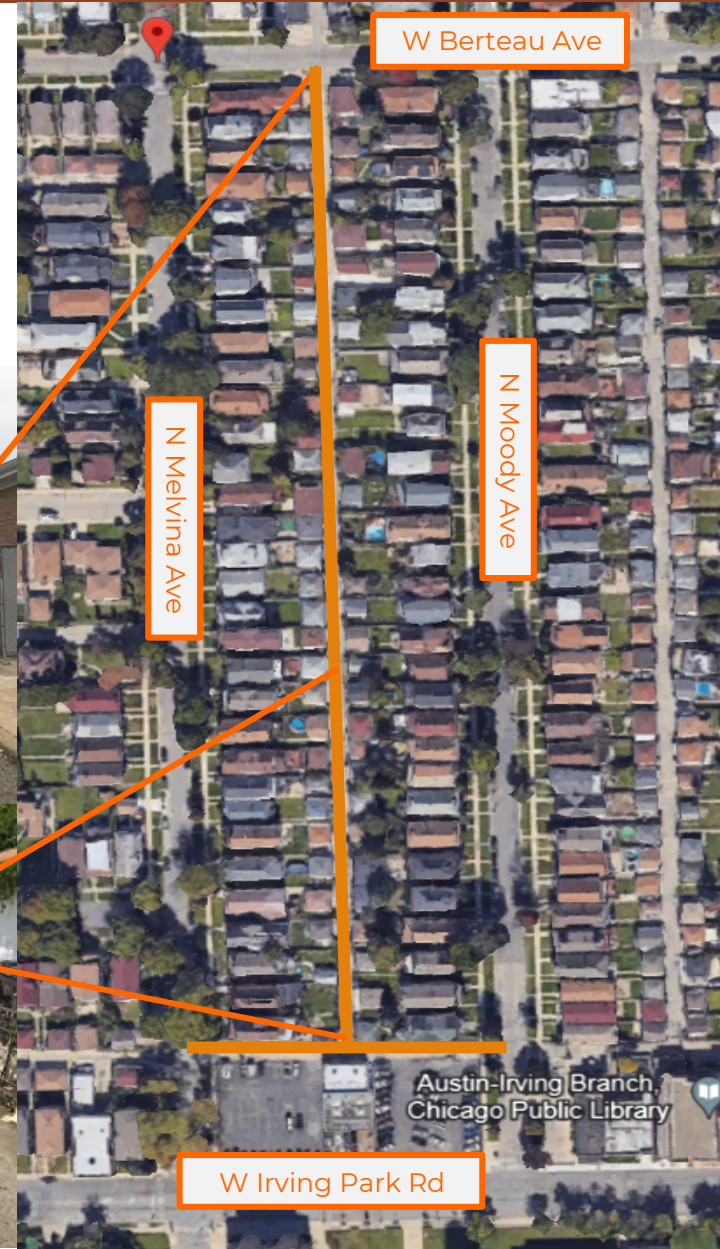
# Project Overview

## Project Locations

- **Berteau - Irving Park; Melvina - Moody**

### ▪ Existing Conditions

- Deteriorating pavement
- Utility poles located within the existing ROW
- Mix of residential and commercial use
- Non-special waste (benzene) required
- Existing 3" circle trough for drainage



## Project Overview

- Existing Conditions
- Proposed Conditions





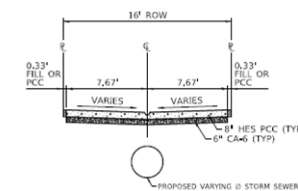
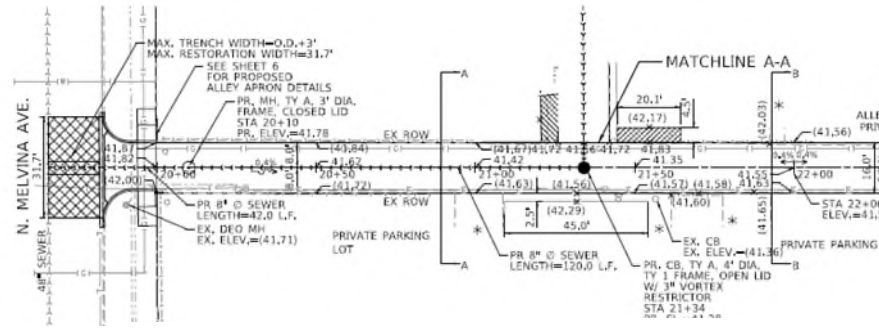
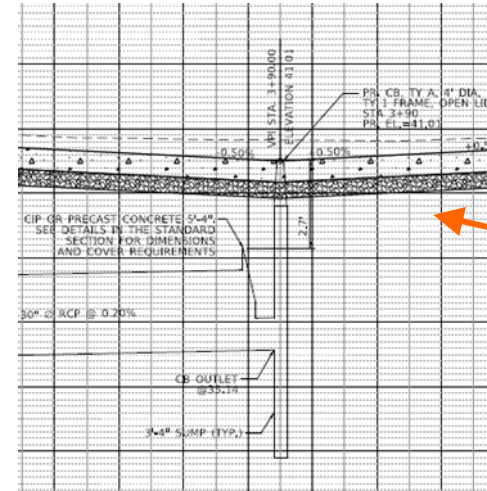
# Project Overview

## Project Locations

- Berteau - Irving Park; Melvina - Moody

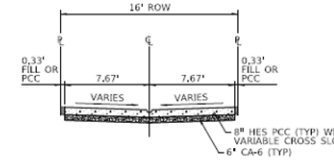
- **Proposed Conditions**

- 8" (~323') and 30" (~633') storm sewer will be installed
- Adding Catch Basins throughout the alley
- High points are established at STA. 4+70 and STA. 22+00 to assist in drainage



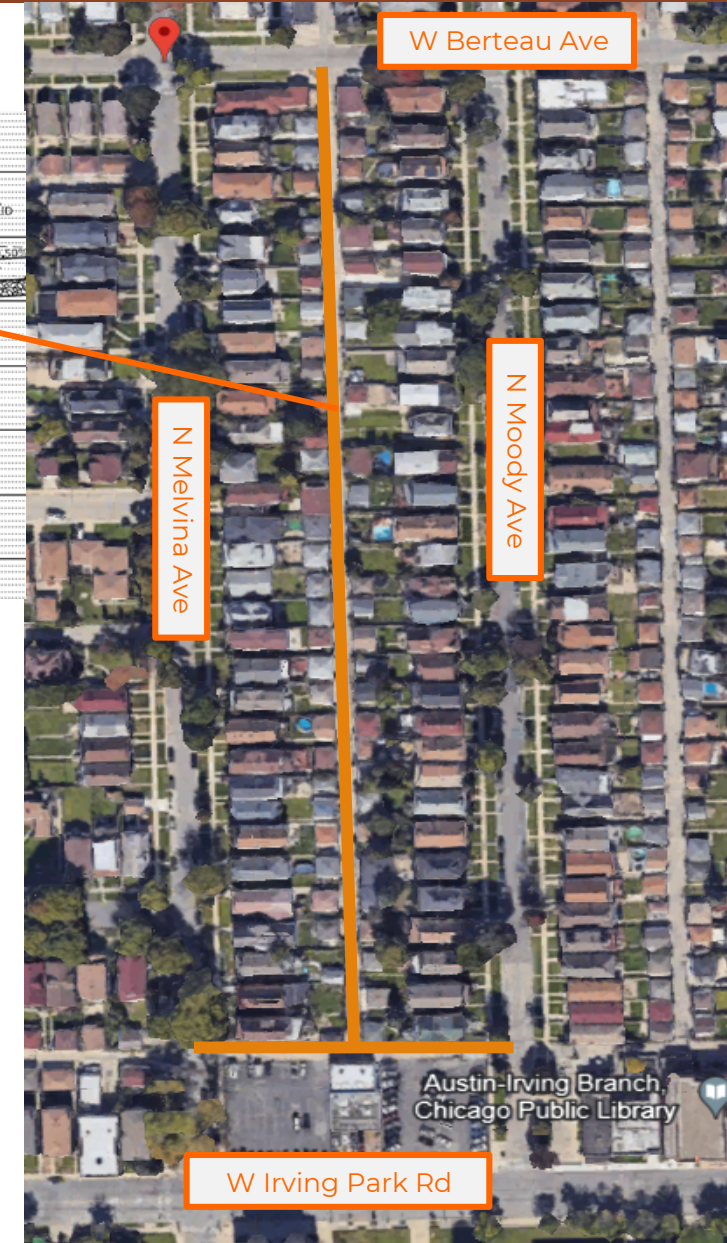
PROPOSED TYPICAL CROSS SECTION A-A

STA. 0+00 TO STA. 1+00  
STA. 1+00 TO STA. 3+90  
STA. 5+40 TO STA. 11+23  
STA. 20+00 TO STA. 21+34



PROPOSED TYPICAL CROSS SECTION B-B

STA. 3+90 TO STA. 5+40



## Project Overview

- Existing Conditions
- **Proposed Conditions**



# Project Overview

## Project Locations

- Berteau - Irving Park; Melvina - Moody
- **Touhy – Estes; Glenwood – Sheridan**



### ▪ Existing Conditions

- Deteriorating pavement and speed humps
- Utility poles and dumpsters located within ROW
- Existing stairs to building entrances adjacent to alley
- Existing 6" sewer connected to sewer on Estes to remain

## Project Overview

- Existing Conditions
- Proposed Conditions





# Project Overview

## Project Locations

- Berteau - Irving Park; Melvina - Moody
- **Touhy – Estes; Glenwood – Sheridan**

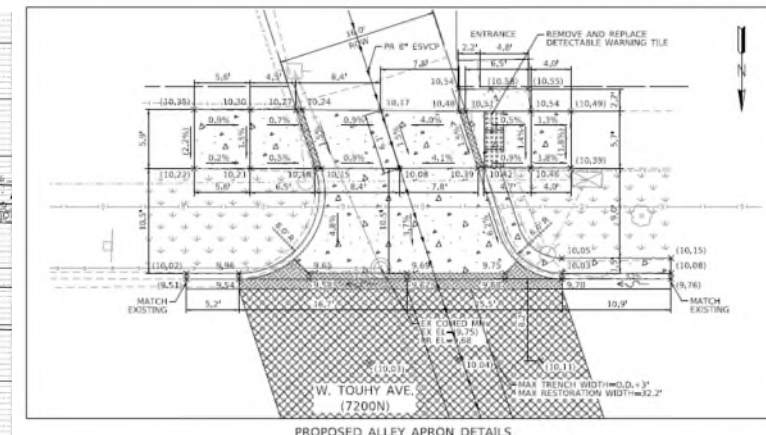
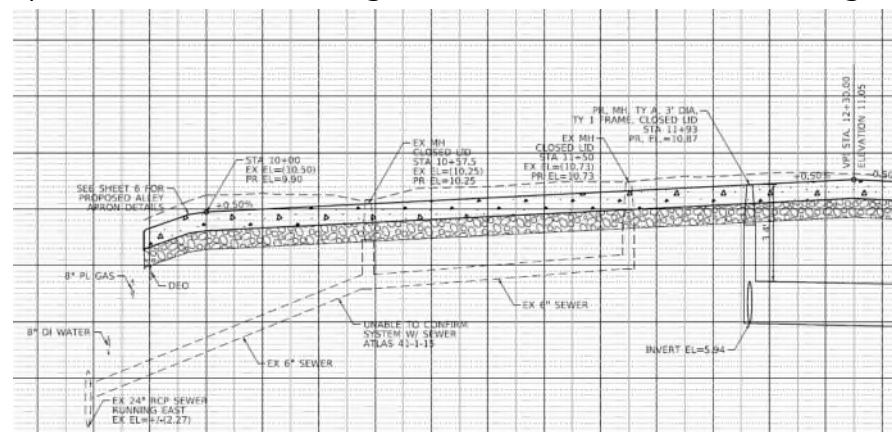


### Proposed Conditions

- 18" ESVCP (~635'), and 8" ESCVP (~575') connected to 15" sewer on Touhy
- Adding Catch Basins and Manholes throughout the alley
- No proposed connection to existing sewer from alley to Estes
- Alley apron at Glenwood in good condition, match existing

## Project Overview

- Existing Conditions
- **Proposed Conditions**



# Project Overview

## Project Locations

- Berteau - Irving Park; Melvina - Moody
- Touhy - Estes; Glenwood - Sheridan
- **Pensacola - Cullom; Hoyne - Damen**



## Project Overview

- **Existing Conditions**
- Proposed Conditions

### Existing Conditions

- Deteriorating pavement
- Sheet flow for N-S alley with 3" key cut
- Existing apron on Pensacola in good condition, match back of sidewalk
- Utility poles located within the existing ROW





# Project Overview

## Project Locations

- Berteau - Irving Park; Melvina - Moody
- Touhy – Estes; Glenwood – Sheridan
- **Pensacola – Cullom; Hoyne – Damen**



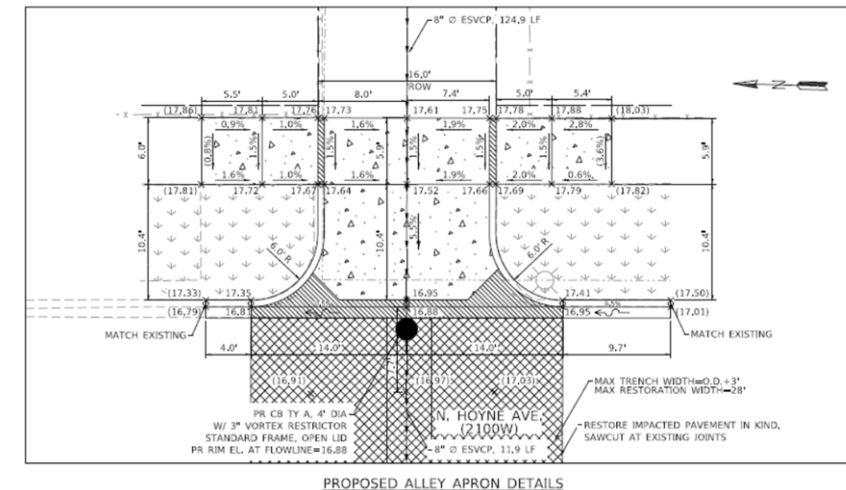
## Project Overview

- Existing Conditions
- **Proposed Conditions**



### Proposed Conditions

- Deteriorating pavement
- 8" ESVCP (~333') installed along part of E-W alley connected to existing 24" RCP sewer on Hoyne
- Adding Catch Basins and Manholes throughout E-W alley with 3" circle trough to assist in sheet flow



# Project Overview

## Project Locations

- Berteau - Irving Park; Melvina - Moody
- Touhy - Estes; Glenwood - Sheridan
- Pensacola - Cullom; Hoyne - Damen
- **Bryn Mawr - Linder; Lotus - Catalpa**

### Existing Conditions

- Deteriorating pavement
- Existing utility poles located within the existing ROW
- Existing 102" brick sewer on Catalpa Ave not included in scope of project



## Project Overview

- **Existing Conditions**
- Proposed Conditions



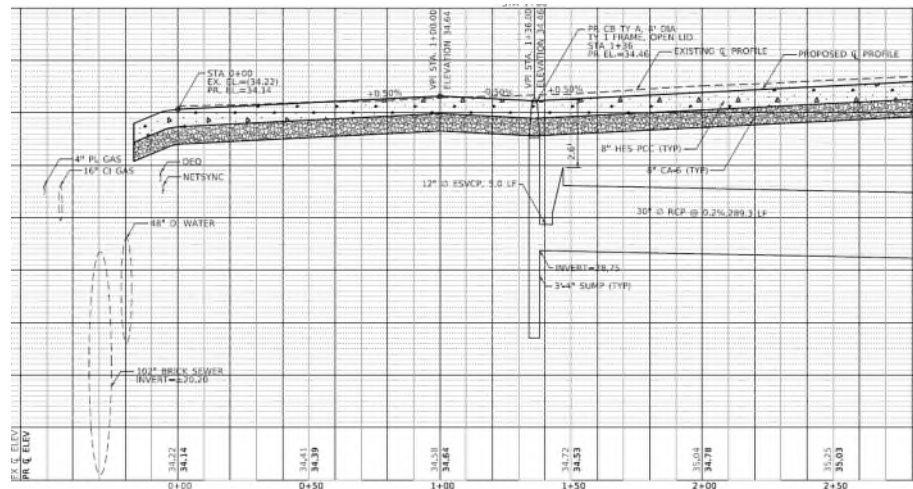
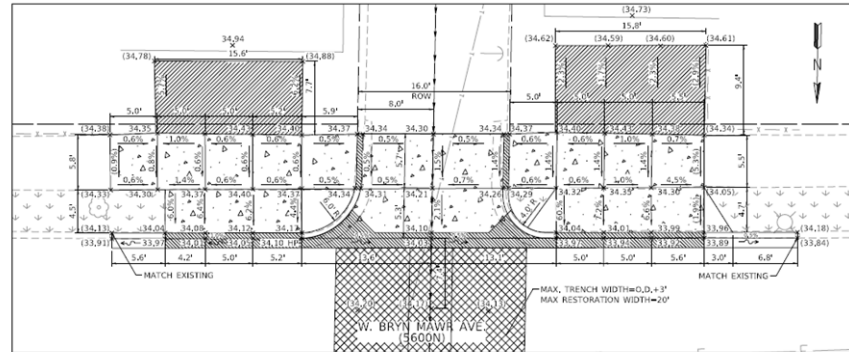
# Project Overview

## Project Locations

- Berteau - Irving Park; Melvina - Moody
- Touhy - Estes; Glenwood - Sheridan
- Pensacola - Cullom; Hoyne - Damen
- **Bryn Mawr - Linder; Lotus - Catalpa**

### Proposed Conditions

- 30" RCP (~289'), 8" ESVCP (~174') connected to existing 24" sewer on Bryn Mawr, partial sheet flow south to Catalpa
- Adding Catch Basins throughout the alley
- No connection to existing brick sewer on Catalpa



## Project Overview

- Existing Conditions
- **Proposed Conditions**



# Project Overview

## Project Locations

- Berteau - Irving Park; Melvina - Moody
- Touhy - Estes; Glenwood - Sheridan
- Pensacola - Cullom; Hoyne - Damen
- Bryn Mawr - Linder; Lotus - Catalpa
- **George - Diversey; Sawyer - Kedzie**

### Existing Conditions

- Deteriorating pavement and speed humps
- Existing utility poles located within the existing ROW
- Existing 3" key cut for drainage
- Non-special waste areas identified



## Project Overview

- **Existing Conditions**
- Proposed Conditions



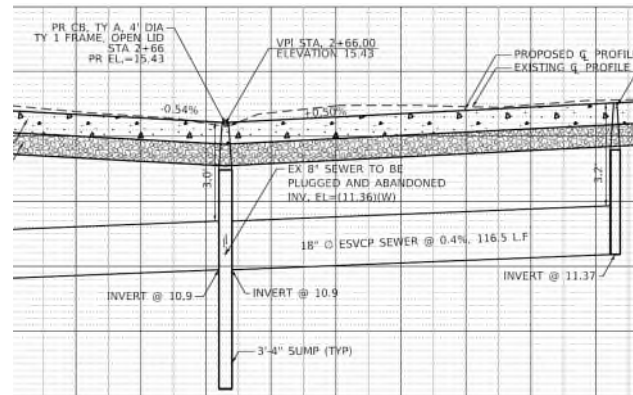
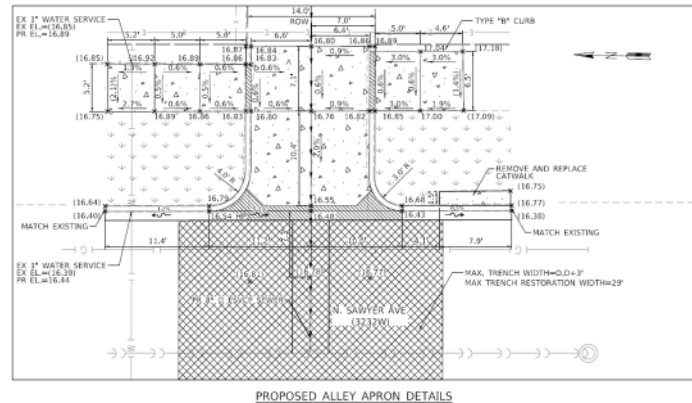
# Project Overview

## Project Locations

- Berteau - Irving Park; Melvina - Moody
- Touhy - Estes; Glenwood - Sheridan
- Pensacola - Cullom; Hoyne - Damen
- Bryn Mawr - Linder; Lotus - Catalpa
- **George - Diversey; Sawyer - Kedzie**

### Proposed Conditions

- 8" (~163') ESVCP & 18" ESCVP (~385') sewers connected to existing 15" sewer at Sawyer Ave
- 1 CB at Sta. 2+66 to be removed/replaced
- Existing 8" sewer to be abandoned



## Project Overview

- Existing Conditions
- **Proposed Conditions**





# Project Overview

## Project Locations

- Berteau - Irving Park; Melvina - Moody
- Touhy - Estes; Glenwood - Sheridan
- Pensacola - Cullom; Hoyne - Damen
- Bryn Mawr - Linder; Lotus - Catalpa
- George - Diversey; Sawyer - Kedzie
- **School - Belmont; Monticello - Central Park**

### Existing Conditions

- Deteriorating pavement and speed humps
- Sheet flow for E-W alley
- Existing 3" key cut in part of N-S alley
- Utility poles, fences and buildings located within the existing ROW



## Project Overview

- Existing Conditions
- Proposed Conditions



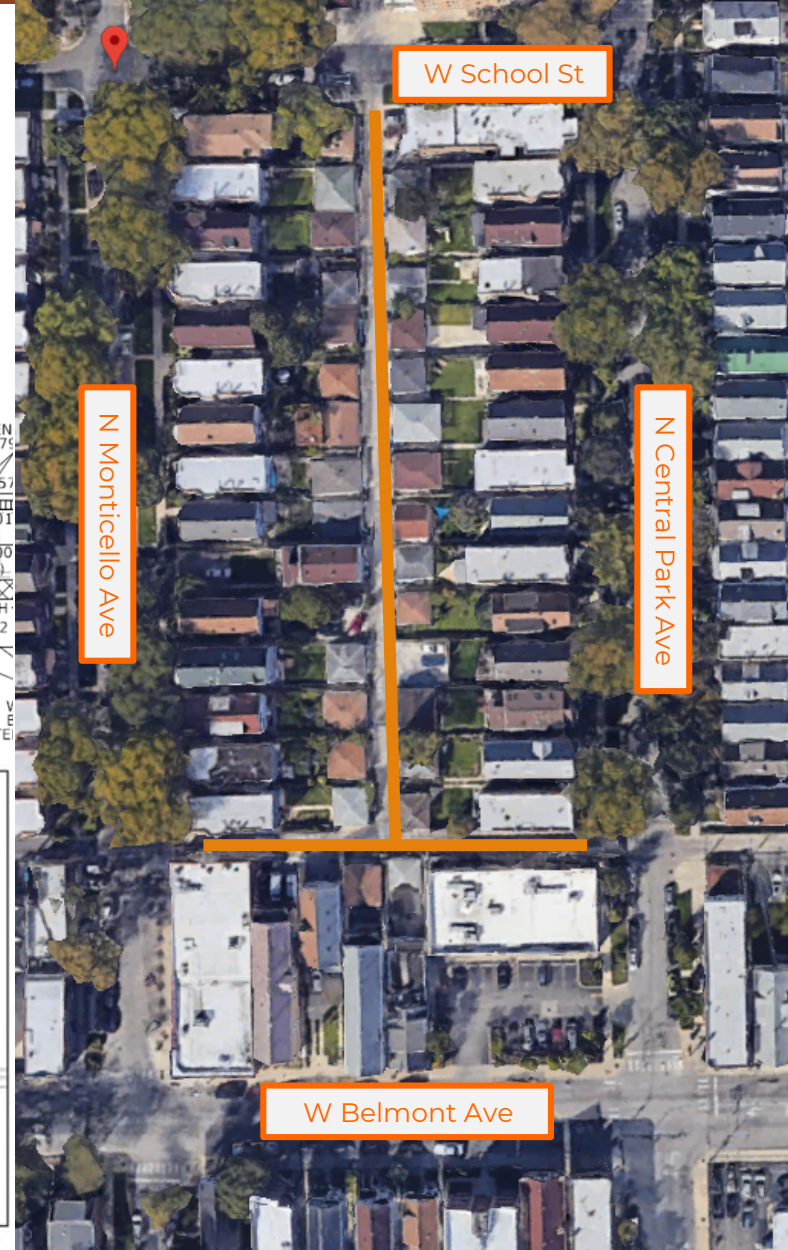
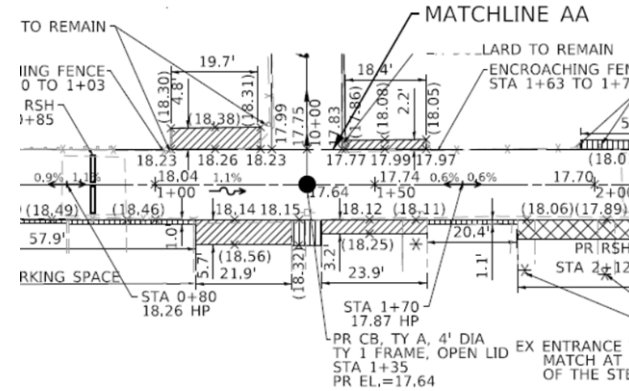
# Project Overview

## Project Locations

- Berteau - Irving Park; Melvina - Moody
- Touhy - Estes; Glenwood - Sheridan
- Pensacola - Cullom; Hoyne - Damen
- Bryn Mawr - Linder; Lotus - Catalpa
- George - Diversey; Sawyer - Kedzie
- **School - Belmont; Monticello - Central Park**

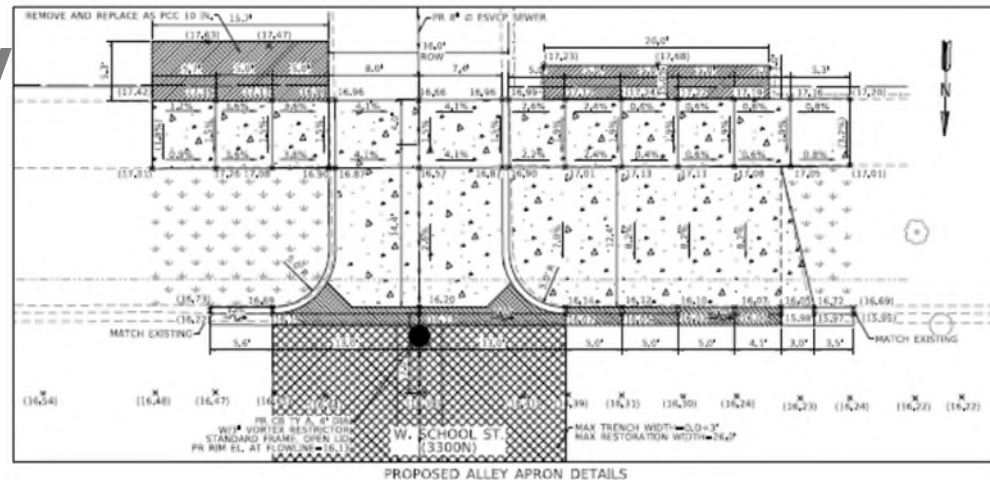
### Proposed Conditions

- Sheet flow for E-W alley
- 8" ESVCP (~471') in N-S alley connected to existing 15" Sewer on School St
- Adding Catch Basins and Manholes throughout N-S alley



## Project Overview

- Existing Conditions
- **Proposed Conditions**





# Project Overview

## Project Locations

- Berteau - Irving Park; Melvina - Moody
- Touhy - Estes; Glenwood - Sheridan
- Pensacola - Cullom; Hoyne - Damen
- Bryn Mawr - Linder; Lotus - Catalpa
- George - Diversey; Sawyer - Kedzie
- School - Belmont; Monticello - Central Park
- **George - Diversey; Spaulding - Sawyer**

### Existing Conditions

- Deteriorating pavement
- Sheet flow for east leg of E-W alley
- Existing 3" key cut in part of N-S alley
- Utility poles located within the existing ROW



## Project Overview

- **Existing Conditions**
- Proposed Conditions



# Project Overview

## Project Locations

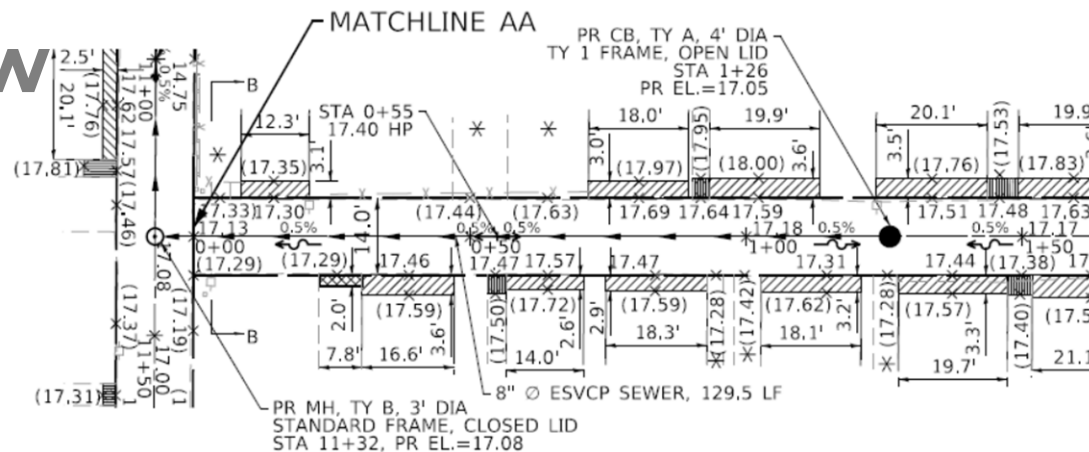
- Berteau - Irving Park; Melvina - Moody
- Touhy – Estes; Glenwood – Sheridan
- Pensacola – Cullom; Hoyne – Damen
- Bryn Mawr –Linder; Lotus – Catalpa
- George – Diversey; Sawyer – Kedzie
- School – Belmont; Monticello – Central Park
- **George – Diversey; Spaulding – Sawyer**

### Proposed Conditions

- Sheet flow for east leg of E-W alley and north end of N-S alley with proposed 3" circle trough
- 8" ESVCP (~251') to existing 15" sewer on Spaulding
- Adding Catch Basins and Manholes throughout N-S and west leg of E-W alley

## Project Overview

- Existing Conditions
- **Proposed Conditions**



# Project Overview

## Project Locations

- Berteau - Irving Park; Melvina - Moody
- Touhy - Estes; Glenwood - Sheridan
- Pensacola - Cullom; Hoyne - Damen
- Bryn Mawr - Linder; Lotus - Catalpa
- George - Diversey; Sawyer - Kedzie
- School - Belmont; Monticello - Central Park
- George - Diversey; Spaulding - Sawyer
- **Eastwood - Sunnyside; Mulligan - Mobile**

### Existing Conditions

- Deteriorating pavement
- Existing Brick Manhole on Eastwood Ave to be removed and replaced
- Utility poles located within the existing ROW



## Project Overview

- **Existing Conditions**
- Proposed Conditions



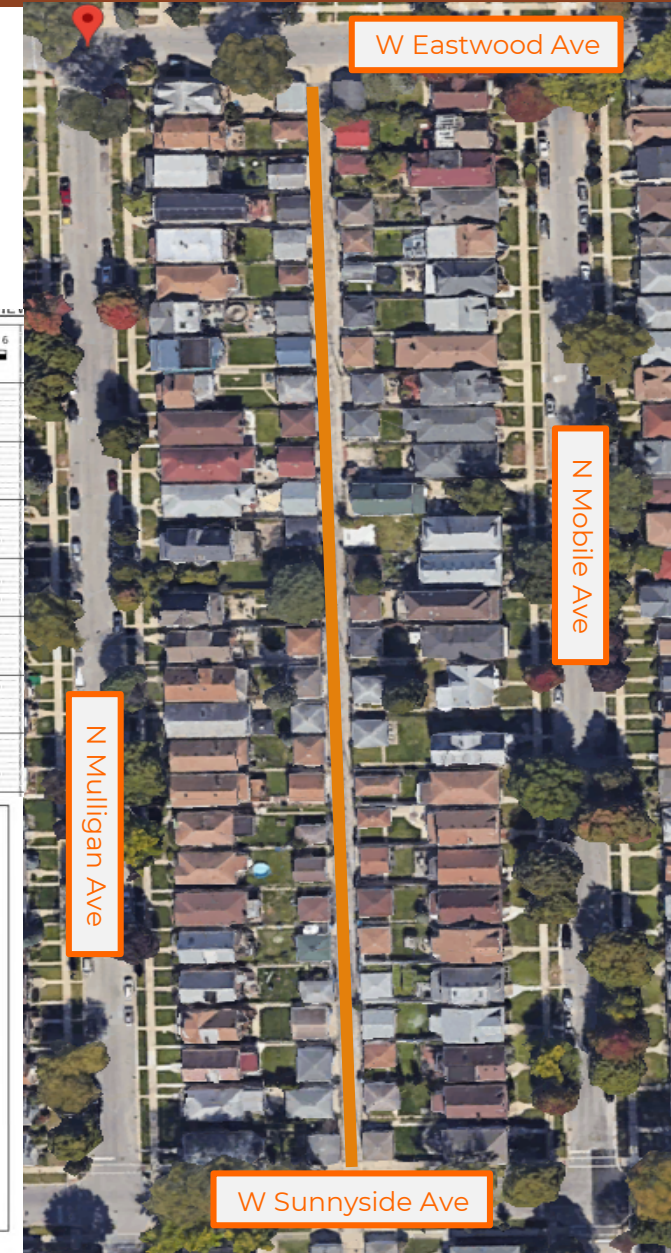
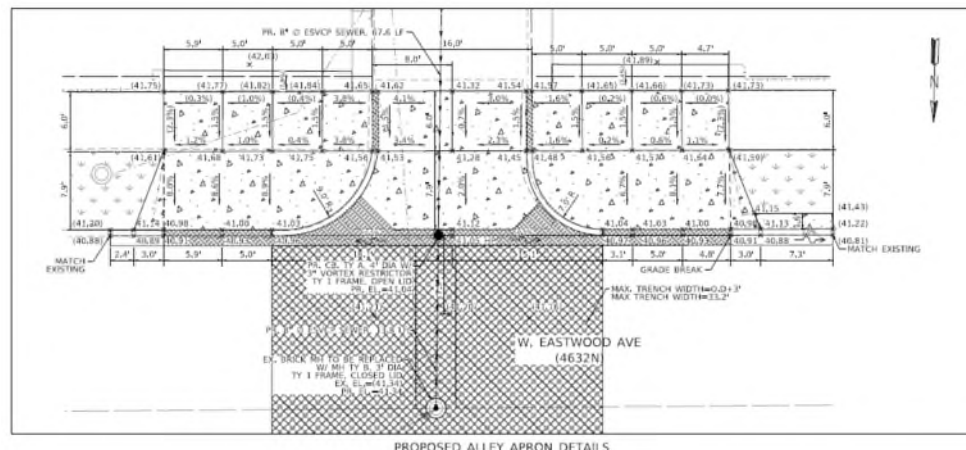
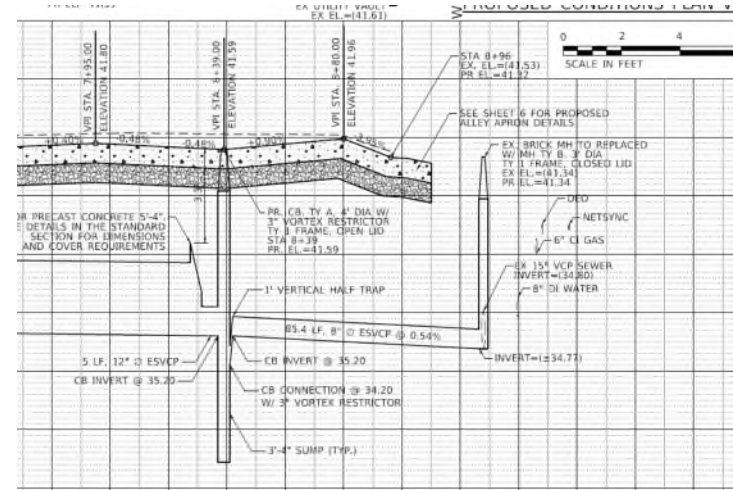
# Project Overview

## Project Locations

- Berteau - Irving Park; Melvina - Moody
- Touhy - Estes; Glenwood - Sheridan
- Pensacola - Cullom; Hoyne - Damen
- Bryn Mawr - Linder; Lotus - Catalpa
- George - Diversey; Sawyer - Kedzie
- School - Belmont; Monticello - Central Park
- George - Diversey; Spaulding - Sawyer
- **Eastwood - Sunnyside; Mulligan - Mobile**

### Proposed Conditions

- 18" ESVCP (~577'), 30" RCP (~165'), and 8" ESVCP (~85') to existing 15" sewer on Eastwood
- Existing brick MH to be replaced with TY. B, 3' MH
- Adding Catch Basins throughout the alley



## Project Overview

- Existing Conditions
- **Proposed Conditions**



# Project Overview

## Project Locations

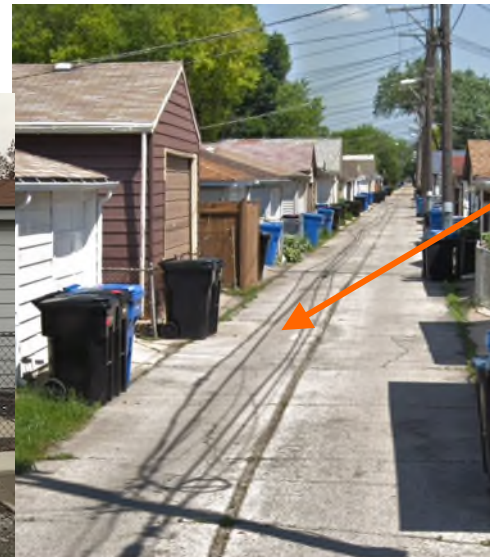
- Berteau - Irving Park; Melvina - Moody
- Touhy - Estes; Glenwood - Sheridan
- Pensacola - Cullom; Hoyne - Damen
- Bryn Mawr - Linder; Lotus - Catalpa
- George - Diversey; Sawyer - Kedzie
- School - Belmont; Monticello - Central Park
- George - Diversey; Spaulding - Sawyer
- Eastwood - Sunnyside; Mulligan - Mobile
- **Argyle - Strong; Merrimac - Melvina**

## Project Overview

- **Existing Conditions**
- Proposed Conditions

### ▪ Existing Conditions

- Deteriorating pavement and some water ponding
- Utility poles located within the existing ROW
- Existing 3" key cut
- Construction Work Caution Area (CWCA) present for 191' starting 140' north of Strong. Construction Worker Inhalation (mercury) from ground surface to approximately 4 feet bgs





# Project Overview

## Project Locations

- Berteau - Irving Park; Melvina - Moody
- Touhy - Estes; Glenwood - Sheridan
- Pensacola - Cullom; Hoyne - Damen
- Bryn Mawr - Linder; Lotus - Catalpa
- George - Diversey; Sawyer - Kedzie
- School - Belmont; Monticello - Central Park
- George - Diversey; Spaulding - Sawyer
- Eastwood - Sunnyside; Mulligan - Mobile
- **Argyle - Strong; Merrimac - Melvina**

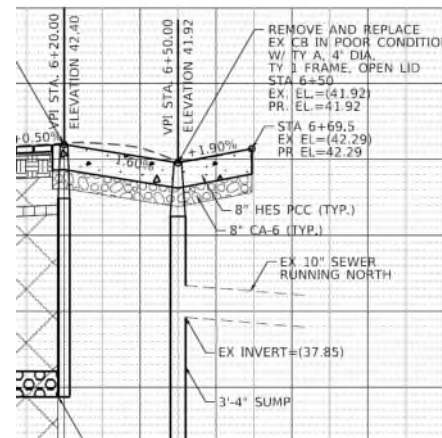
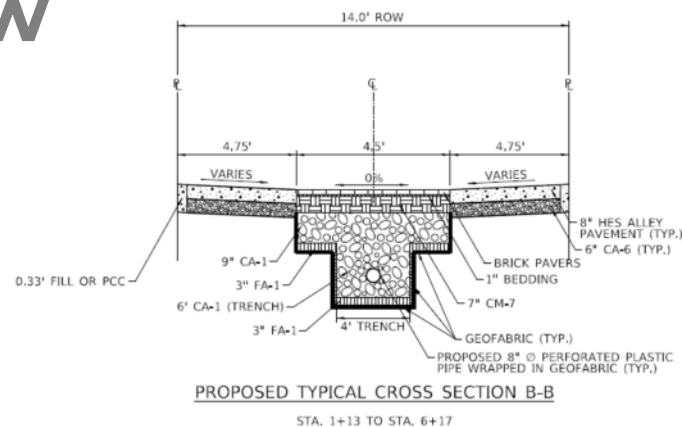
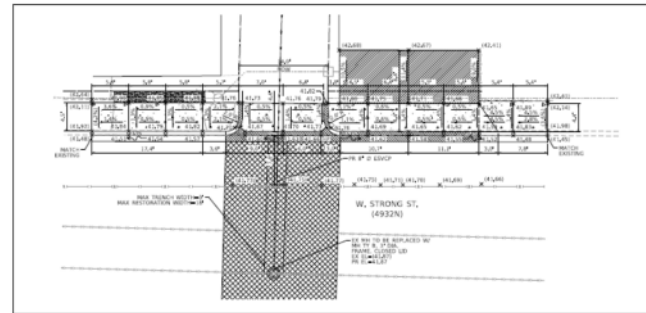
## Project Overview

- Existing Conditions
- **Proposed Conditions**



### Proposed Conditions

- 8" Perforated Plastic Pipe with permeable pavers is proposed drainage solution for majority of length of alley
- 8" ESVCP (~134') proposed to connect alley sewer to existing 30" sewer on Strong
- Adding Catch Basins and Manholes throughout the alley
- CB at Argyle to be removed and replaced





# Q & A