



ALL CONSTRUCTION GROUP

**ADDENDUM NO.:** 02  
**PROJECT NAME:** North Park Village (NPV) Administration-Building C (Bid Package 1 – Campus Signage)  
**PROJECT NO.:** 04038  
**DATE OF ISSUE:** 6/13/2023

---

## **NOTICE OF CHANGES, MODIFICATIONS, OR CLARIFICATIONS TO CONTRACT DOCUMENTS**

The following changes, modifications, or clarifications are hereby incorporated and made an integral part of the Contract Documents. Unless clearly expressed otherwise by this Addendum, all terms and conditions defined in the original Contract Documents shall continue in full force and effect and shall have the same meaning in this Addendum. Issued Addenda represent responses/clarifications to various inquiries. Contractors shall be responsible for including all associated labor/material costs in its bid. Drawings/specifications corresponding to inquiry responses will be issued with the Issue for Construction Documents, upon issuance of building permit.

**ITEM NO. 1: CHANGE TO KEY DATES**  
**Change 1** None

**ITEM NO. 2: REVISIONS TO BOOK 1 – INSTRUCTIONS TO BIDDERS**  
None

**ITEM NO. 3: REVISIONS TO BOOK 2 – STANDARD TERMS AND CONDITIONS**  
None

**ITEM NO. 4: REVISIONS TO TECHNICAL SPECIFICATIONS & DRAWINGS**  
**Change 1** Revised Cover Sheet – Updated Title  
**Change 2** Revised A-900 General Notes - added note 13 for mechanically fastened signage letters.  
**Change 3** Added Existing signage reference images added to A-900.

**ITEM NO. 5: REQUESTS FOR INFORMATION**  
**Question 1** Addendum 1 indicates 3/4" thick (raised letters). Are these letters aluminum or acrylic?

**Answer:** Letters are to be Aluminum, as indicated on Detail 2/A-901

**Question 2** Can these raised letters be adhesive mounted?

**Answer:** No, the letters should be mechanically fastened. See added General Note 13/A-900

**Question 3** The cost for 3/4" thick letters is expensive. Is a message list available for each sign so we get an exact count of the number of letters that will need to be purchased?

**Answer:** Bidders should refer to Details 3 and 6 on Sheet A-902 for typical character counts for Building and Wayfinding Signage respectively.

**Question 4** The “Map Sign” and the “Wayfinding Signs” have straight round posts. The “Main Entry” sign has tapered round posts. Does the designer have a specifics source for the “Main Entry” sign posts?

**Answer:** No. Post dimensions are referenced on sheet A-901.

**Question 5** Are “Building Sign” posts round?

**Answer:** No, tapered triangular shape, with flat top, as indicated on Detail 4/A-902.

**Question 6** Are the signs non-illuminated?

**Answer:** Signs are illuminated by new in ground lighting, as indicated on 1/A-900.

**Question 7** It looks like we are required to remove the existing signs and the sign foundations. Do you have shop drawings for the existing signs that show the current foundations?

**Answer:** The Team does not have shop drawing or legacy drawing information available. Photos of existing signage to be removed have been added to Sheet A-900.

**Question 8** How is the map art handled for the “Map Sign”? Will the sign graphics be digitally printed?

**Answer:** The Design Team does not take exception to digital printing for the Map Graphic on the Map Sign. Samples should be provided for selection as part of the submittal process.

**Question 9** Who will provide the map art for the “Map Sign”?

**Answer:** The Design Team will provide the Vector Artwork during submittal phase.

**Question 10** Do we need to include sign permits?

**Answer:** Yes. Provide all permits as indicated in Book 1 Section V.A.2 and Section C.12.

**Question 11** Is a Bid Bond required?

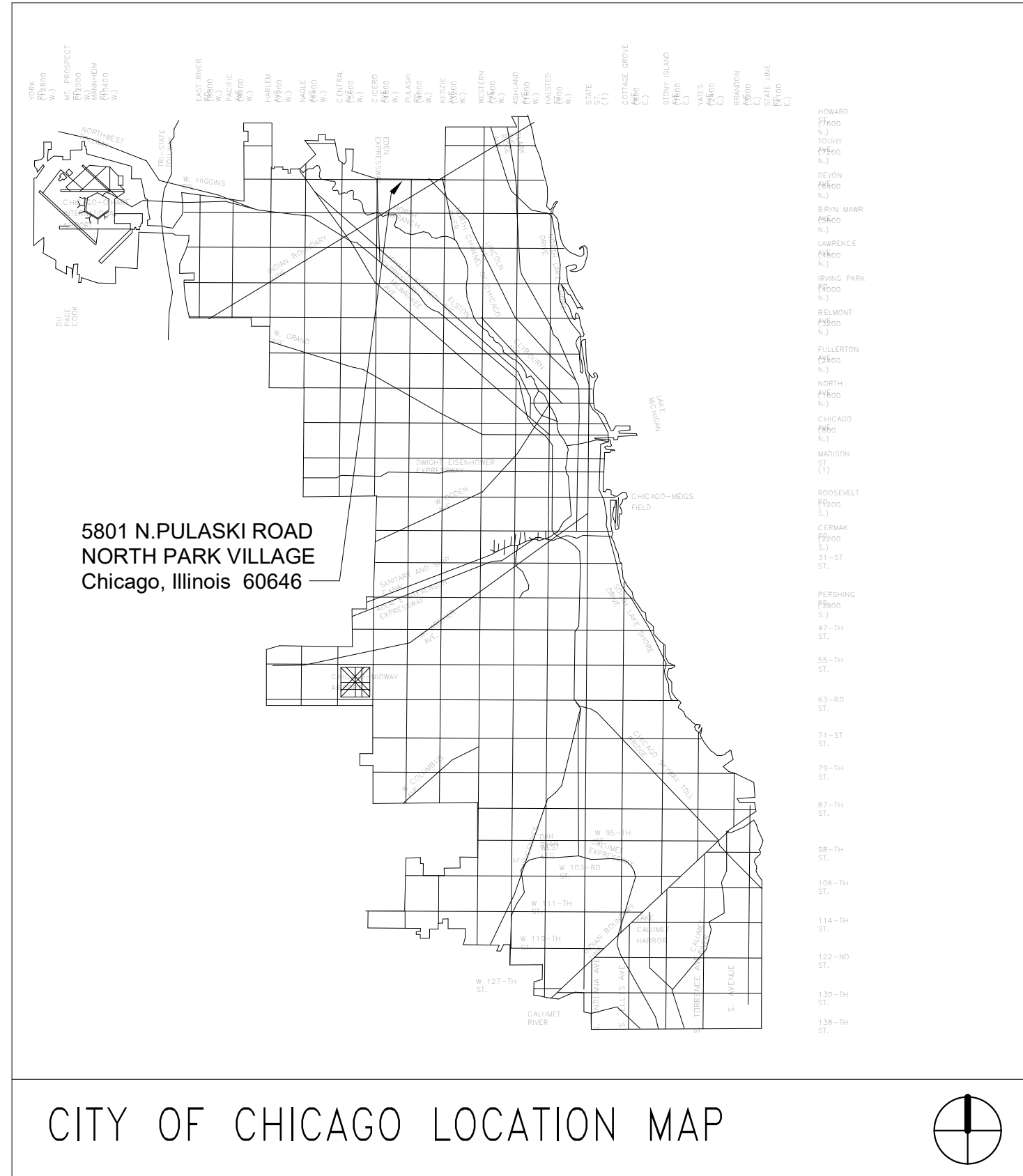
**Answer:** Yes. Reference Book 1 Instructions To Bidders, Section III, Item No. 3.

**Question 12** Do we need to include a Performance / Payment Bond?

**Answer:** Yes. Reference Book 2 Sample Project Agreement, Article VI.6.2

**END OF ADDENDUM NO. 02**





# NORTH PARK VILLAGE

5801 N. PULASKI  
CHICAGO, ILLINOIS 60646  
PBC PROJECT NUMBER 04038



**PUBLIC BUILDING COMMISSION OF CHICAGO**

CITY OF CHICAGO  
BRANDON JOHNSON, MAYOR

PUBLIC BUILDING COMMISSION OF CHICAGO  
CARINA E. SÁNCHEZ, EXECUTIVE DIRECTOR

ASSETS, INFORMATION, AND SERVICES, CITY OF CHICAGO  
SANDRA BLAKEMORE - COMMISSIONER

## CAMPUS SIGNAGE PACKAGE

### ADDENDUM # 2

2023.06.13

### ARCHITECT OF RECORD

KOO LLC  
55 W Wacker Dr, Ste 600C  
Chicago, IL 60601  
P: 312.235.0920

### MEP ENGINEER

IMEG  
225 W Washington St, Ste 2700  
Chicago, IL 60606  
P: 312.294.0501

**PROJECT DESCRIPTION:**

**SITE SIGNAGE PACKAGE FOR NORTH PARK VILLAGE  
INCLUDING NEW WAY FINDING SIGNAGE AND  
LIGHTING**

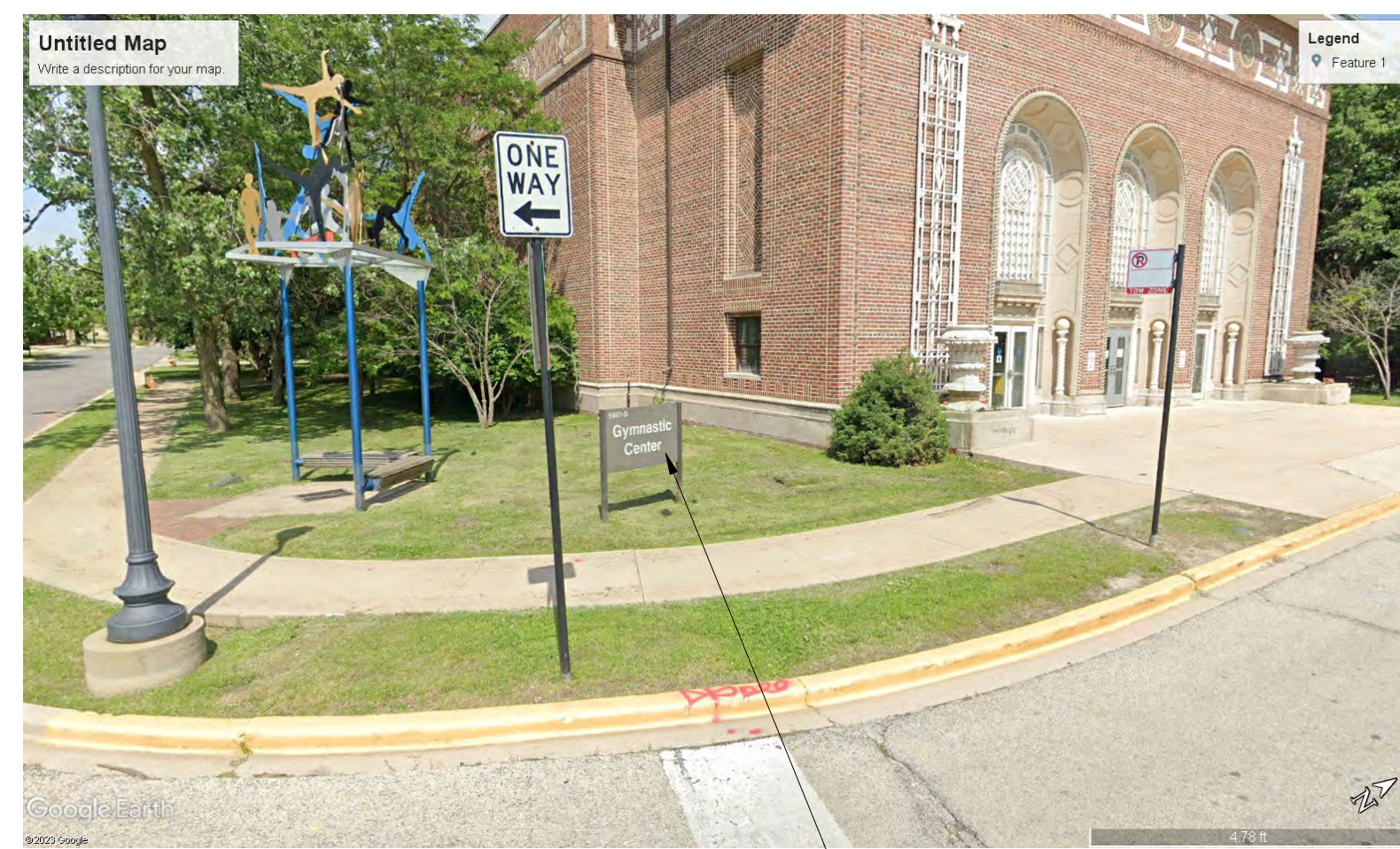
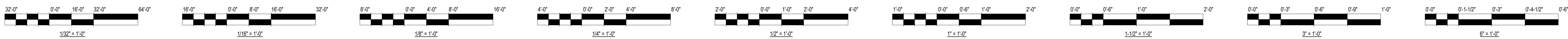


SIGNAGE SHEET INDEX	
#	Name

ARCHITECTURE	
A-90	COVER
A-900	CAMPUS SIGNAGE PLAN
A-901	ENTRY SIGNAGE DETAILS
A-902	MAP, BUILDING AND WAYFINDING SIGNAGE DETAILS
Grand total: 4	







EXISTING BUILDING SIGNAGE TO BE REMOVED

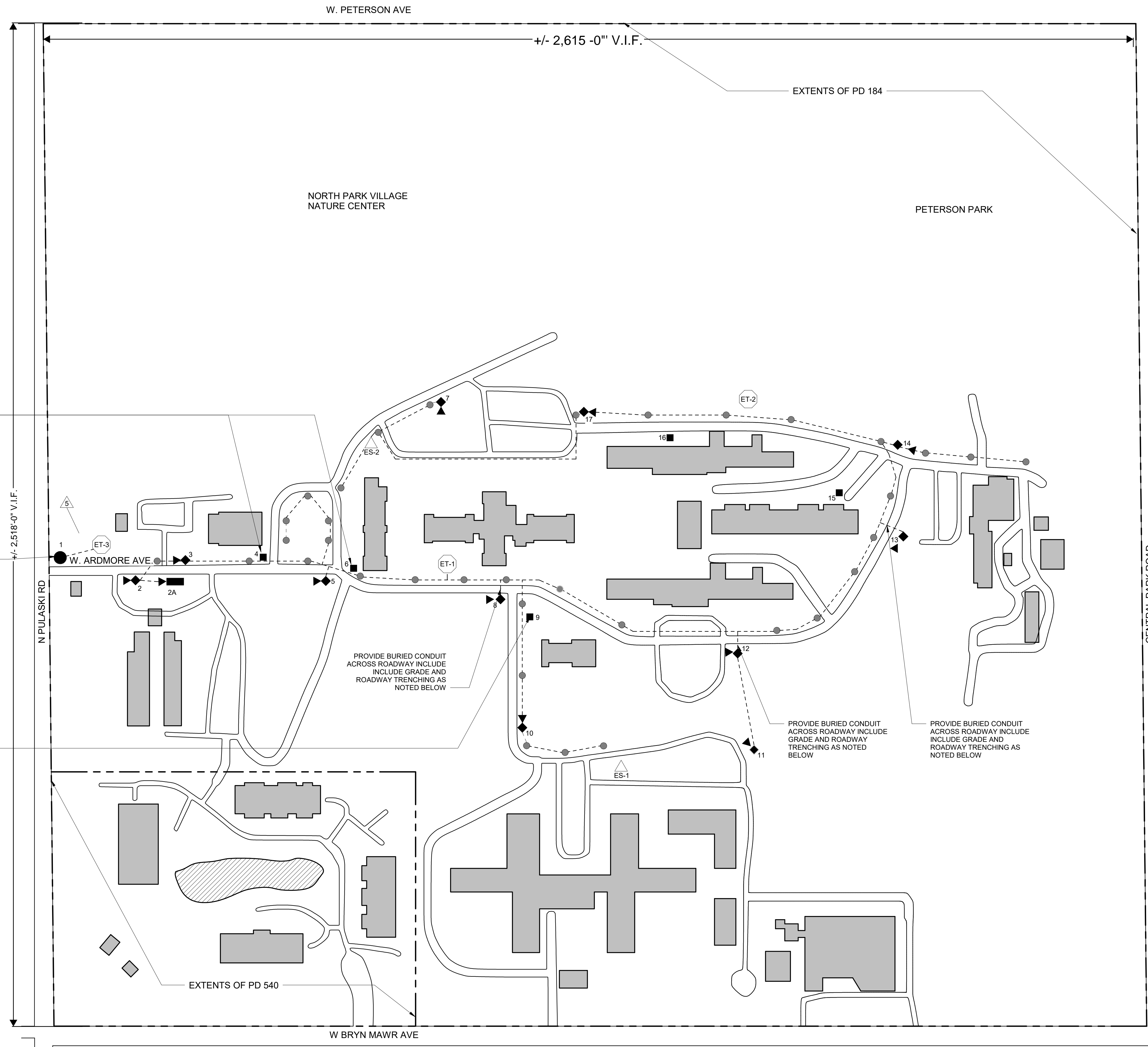


EXISTING WAYFINDING SIGNAGE TO BE REMOVED



EXISTING WAYFINDING SIGNAGE TO BE REMOVED

2 - EXISTING SIGNAGE REFERENCE IMAGES



GENERAL NOTES:

- THE INTENT OF THIS SIGNAGE PACKAGE IS TO BE USED BY THE CM@R AND A SIGNAGE VENDOR TO DOCUMENT, PROCURE AND INSTALL SIGNAGE AND RELATED SITE WORK AS REQUIRED. THESE SHOULD NOT BE CONSIDERED CONSTRUCTION DOCUMENTS.
- ALL ITEMS ARE TO BE NEW UNLESS NOTED OTHERWISE.
- WHERE ELEMENTS ARE REMOVED FROM EXISTING CONSTRUCTION, PATCH, REPAIR, AND REFINISH SURFACES TO REMAIN TO MATCH ADJACENT SURFACES.
- CM@R TO PROVIDE GRADE AND ROADWAY TRENCHING AND BACKFILL AS REQUIRED TO ACCOMMODATE LIGHTING CONDUIT.
- ALL SIGNAGE SUPPORTS, POSTS, AND RELATED ITEMS TO BE ENGINEERED BY THE SIGNAGE PROVIDER.
- CM@R TO PROVIDE SUBMITTALS FOR REVIEW BY AOR, PBC AND OTHER END USERS AS REQUIRED:
  - A. SUBMITTALS REQUIRED
  - B. SIGNAGE MATERIAL, LETTERING AT FULL SCALE, FINISH AND COLOR SAMPLES
  - C. SIGNAGE SHOP DRAWINGS AND SIGNAGE SCHEDULE (INCLUDING PLANS, ELEVATIONS AND DETAILS AT MIN. 1/2" = 1'-0" SCALE) FOR EACH BUILDING AND WAYFINDING SIGN
  - D. SIGNAGE ENGINEERING CALCULATIONS SIGNED AND SEALED BY A STRUCTURAL ENGINEER LICENSED IN THE STATE OF ILLINOIS
  - E. LIGHT FIXTURE PRODUCT DATA
  - F. ELECTRICAL PRODUCT AND METER DATA AS NOTED BELOW
  - G. WARRANTY INFORMATION FOR SIGNS, LIGHT FIXTURES AND RELATED ITEMS
- CM@R TO VERIFY IN FIELD ALL DIMENSIONS AND LOCATIONS, AND NOTIFY THE ARCHITECT AND PBC OF ANY DISCREPANCIES PRIOR TO PROCEEDING WITH THE WORK.
- ALL EXISTING CAMPUS SIGNAGE AND RELATED CONSTRUCTION TO BE REMOVED BY CM@R.
- CM@R TO COORDINATE WITH PBC REGARDING RETURNING OR DISPOSAL OF EXISTING SIGNS TO BE REMOVED.
- CM@R AND SIGNAGE VENDOR TO PROCURE ALL REQUIRED PERMITS.
- DO NOT SCALE DRAWINGS.
- ALL SIGNAGE PAINTED ALUMINUM BACK PANELS TO BE CUSTOM COLOR A. ALL PAINTED ALUMINUM POSTS AND TRIM TO BE CUSTOM COLOR B. ALL PAINTED LETTERING TO BE COLOR C.
- SIGNAGE PROVIDER TO ENGINEER AND PROVIDE ALUMINUM BACK PANELS IN SUITABLE THICKNESS AS REQUIRED FOR SIGNAGE SIZE AND LETTERING.
- ALL SIGNAGE LETTERS TO BE MECHANICALLY FASTENED.

ELECTRICAL NOTES:

- POWER TO THE NEW ILLUMINATED SITE SIGNAGE LOCATIONS, AS DEPICTED WITHIN THE PROVIDED ILLUSTRATIONS, SHALL BE FED FROM THE EXISTING SITE LIGHTING CIRCUITS WITHIN THE VICINITY OF THE SIGN. EXISTING CONDUIT AND WIRE SHALL BE EXTENDED TO THE NEW SIGN LOCATIONS AND JUNCTION BOXES/HAND-HOLES SHALL BE PROVIDED AS DETERMINED DURING INSTALLATION. EXACT CONDUIT ROUTING SHALL BE FIELD VERIFIED BY THE ELECTRICAL CONTRACTOR AND COORDINATED WITH THE SITE OPERATOR. WIRE SIZES SHALL BE INCREASED AS REQUIRED TO ENSURE VOLTAGE DROP DOES NOT EXCEED 3% AT ANY POINT IN THE BRANCH CIRCUIT. PRIOR TO ANY ELECTRICAL WORK, THE CM@R SHALL CONFIRM THE SITE LIGHTING VOLTAGE AND METER ALL AFFECTED SITE LIGHTING CIRCUITS, TO VERIFY THE SPARE CAPACITY REQUIRED FOR THE NEW ILLUMINATED SIGNS IS AVAILABLE FOR USE. THIS METERED INFORMATION SHALL BE PROVIDED TO THE EOR FOR FINAL APPROVAL.

1 BUILDING SIGNAGE CAMPUS PLAN  
NOT TO SCALE

- LEGEND
- BUILDING SIGN
  - ◆ WAYFINDING SIGN WITH IN-GRADE LIGHTING, SEE BELOW.
  - MAIN ENTRY SIGN WITH IN-GRADE LIGHTING, SEE BELOW.
  - MAP SIGNAGE WITH IN-GRADE LIGHTING, SEE BELOW.
  - ▲ GROUND LIGHTING POINTING AT SIGNAGE LTS - Ligna™ UOD-50001 ODESSA
  - ⊙ EXISTING SITE LIGHTING ON TRANSFORMER 1
  - ⊙ EXISTING SENIOR LIVING SIGN WITH STREET LIGHT ADJACENT
  - ⊙ EXISTING TRANSFORMER
  - - - CONDUIT ROUTING, ESTIMATED LOCATION



**NORTH PARK VILLAGE**  
5801 N. PULASKI RD.  
CHICAGO, IL 60646  
ASSETS, INFORMATION AND SERVICES  
CITY OF CHICAGO, COMMISSIONER SANDRA BLAKEMORE

Architect of Record:  
KOO LLC  
55 WACKER DR.  
STE 600C  
CHICAGO, IL 60601  
312-235-0920 PH

IMEG  
Chicago, IL  
Structural/MEP Engineers of Record

Mark	Description	Date
3	SIGNAGE PACKAGE	04/28/23
4	SIGNAGE PACKAGE	05/02/23
5	ADDENDUM #1	07/23
6	ADDENDUM #2	08/13/23

PBC Project Name: NORTH PARK VILLAGE  
PBC Contract No.: 04036  
Project No.: 2139

CAMPUS SIGNAGE PLAN