



PUBLIC BUILDING COMMISSION OF CHICAGO

GARVY ELEMENTARY SCHOOL ADDITION





PUBLIC BUILDING COMMISSION OF CHICAGO

GARVY ELEMENTARY SCHOOL ADDITION

WELCOME

JUILE ANN MCGLADE,
PRINCIPAL,
GARVY ELEMENTARY SCHOOL



PUBLIC BUILDING COMMISSION OF CHICAGO

GARVY ELEMENTARY SCHOOL ADDITION

REMARKS

BRIAN DOHERTY,
ALDERMAN 41ST WARD



PUBLIC BUILDING COMMISSION OF CHICAGO

GARVY ELEMENTARY SCHOOL ADDITION

AGENDA

WELCOME

JULIE ANN MCGLADE, *PRINCIPAL, GARVY ELEMENTARY SCHOOL*

REMARKS

BRIAN DOHERTY, *41ST WARD ALDERMAN, CITY OF CHICAGO*

INTRODUCTIONS

JOSE ALVAREZ, *OFFICER, CPS*

BUILDING DESIGN

LEONA KETTERL, *DEPUTY DIRECTOR FOR EDUCATION DESIGN, PBC*

QUESTION AND ANSWER



PUBLIC BUILDING COMMISSION OF CHICAGO
GARVY ELEMENTARY SCHOOL ADDITION

PBC PRESENTATION ON
BUILDING DESIGN


LEONA KETTERL
DEPUTY DIRECTOR FOR EDUCATION DESIGN, PBC

PUBLIC BUILDING COMMISSION OF CHICAGO

GARVY ELEMENTARY SCHOOL ADDITION

Garvy School - 5225 N. Oak Park



Proposed Site 

Ward Boundary 



PUBLIC BUILDING COMMISSION OF CHICAGO

GARVY ELEMENTARY SCHOOL ADDITION





PUBLIC BUILDING COMMISSION OF CHICAGO

GARVY ELEMENTARY SCHOOL ADDITION



PUBLIC BUILDING COMMISSION OF CHICAGO

GARVY ELEMENTARY SCHOOL ADDITION





PUBLIC BUILDING COMMISSION OF CHICAGO

GARVY ELEMENTARY SCHOOL ADDITION





PUBLIC BUILDING COMMISSION OF CHICAGO

GARVY ELEMENTARY SCHOOL ADDITION



PUBLIC BUILDING COMMISSION OF CHICAGO

GARVY ELEMENTARY SCHOOL ADDITION





PUBLIC BUILDING COMMISSION OF CHICAGO

GARVY ELEMENTARY SCHOOL ADDITION





PUBLIC BUILDING COMMISSION OF CHICAGO

GARVY ELEMENTARY SCHOOL ADDITION





PUBLIC BUILDING COMMISSION OF CHICAGO

GARVY ELEMENTARY SCHOOL ADDITION



©2004 James Steinkamp: Steinkamp/Ballogg Photography



©2004 James Steinkamp: Steinkamp/Ballogg Photography



PUBLIC BUILDING COMMISSION OF CHICAGO

GARVY ELEMENTARY SCHOOL ADDITION





PUBLIC BUILDING COMMISSION OF CHICAGO

GARVY ELEMENTARY SCHOOL ADDITION

PROJECT PROGRAM:

Existing Building:

- 52,054 SF
- 18 Classrooms
- Library
- Gymnasium
- Administrative Suite

New Addition:

- 32,644 SF
- 11 Classrooms
- 1 Science Lab

Green Roof:




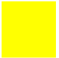
- 21% of Existing roof & New Addition roof area
- 54% of New Addition roof area only

PUBLIC BUILDING COMMISSION OF CHICAGO

GARVY ELEMENTARY SCHOOL ADDITION

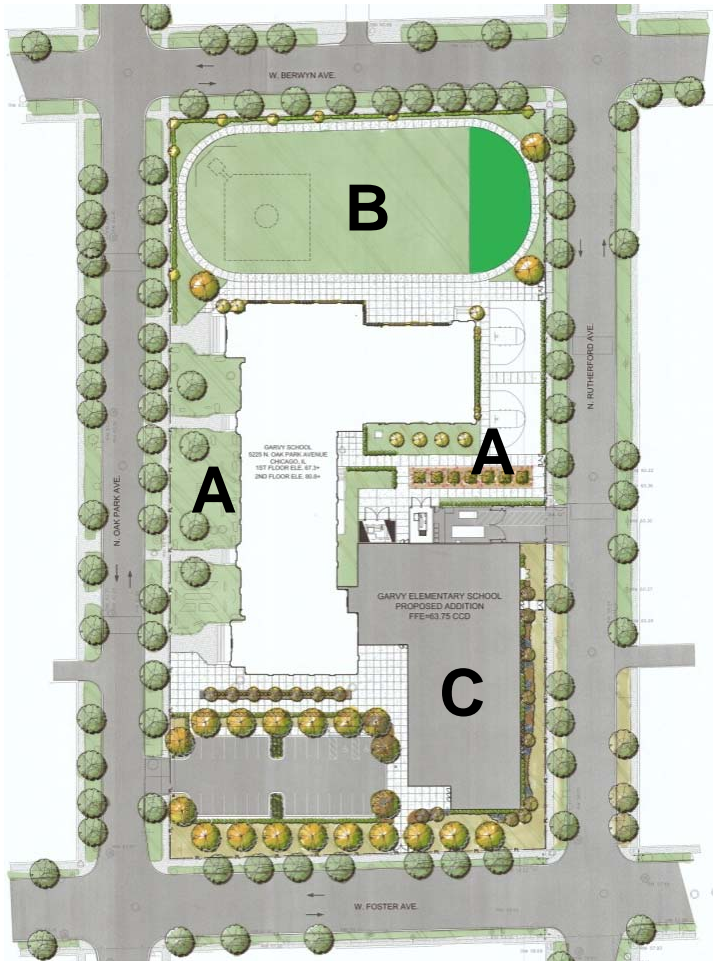


Proposed Logistics

-  Existing Structures
-  Existing Modulares
-  Temporary Modulares (TBD by CPS)
-  Addition

PUBLIC BUILDING COMMISSION OF CHICAGO

GARVY ELEMENTARY SCHOOL ADDITION



- A** Outdoor learning gardens
- B** Flexible green spaces
- C** Green roof

SITE PLAN

PUBLIC BUILDING COMMISSION OF CHICAGO

GARVY ELEMENTARY SCHOOL ADDITION

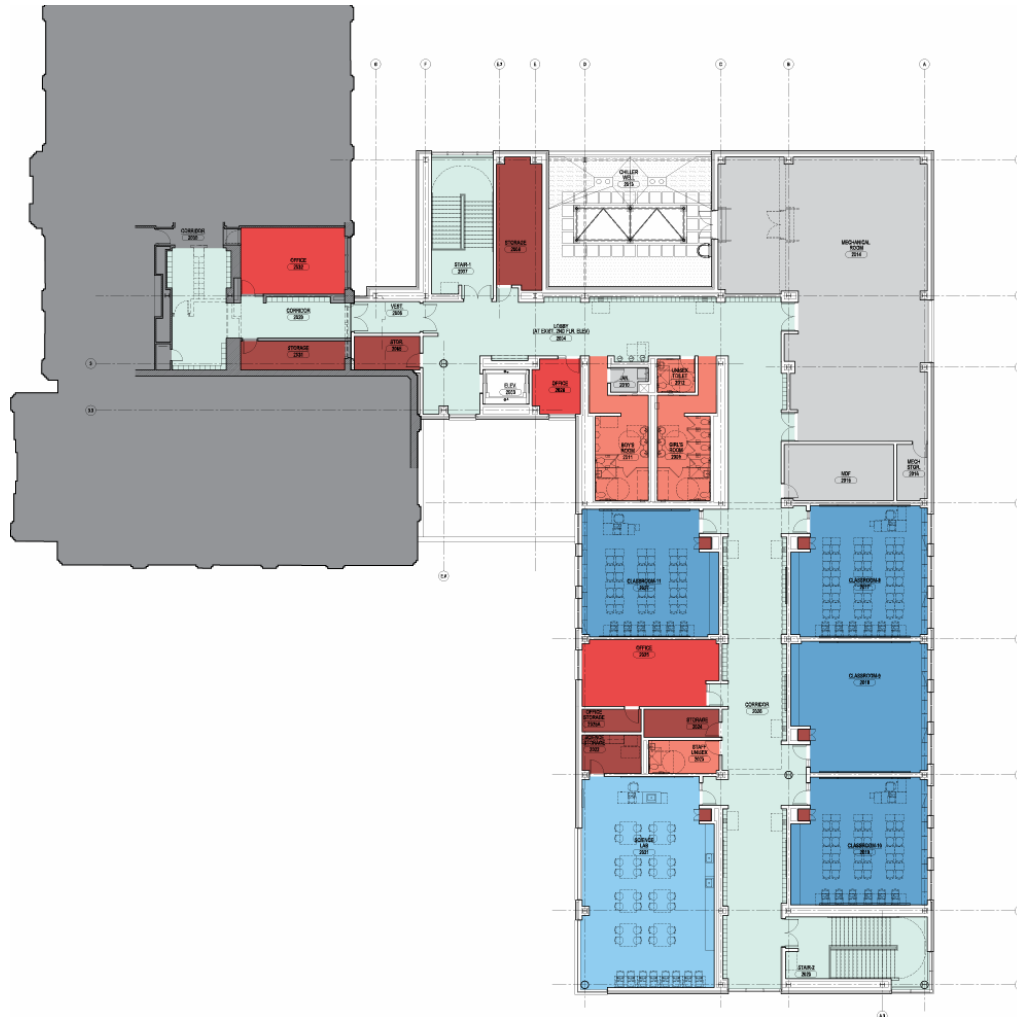


- CLASSROOM
- SCIENCE LAB
- CIRCULATION
- STORAGE
- RESTROOM
- OFFICE
- MECHANICAL

FIRST FLOOR

PUBLIC BUILDING COMMISSION OF CHICAGO

GARVY ELEMENTARY SCHOOL ADDITION

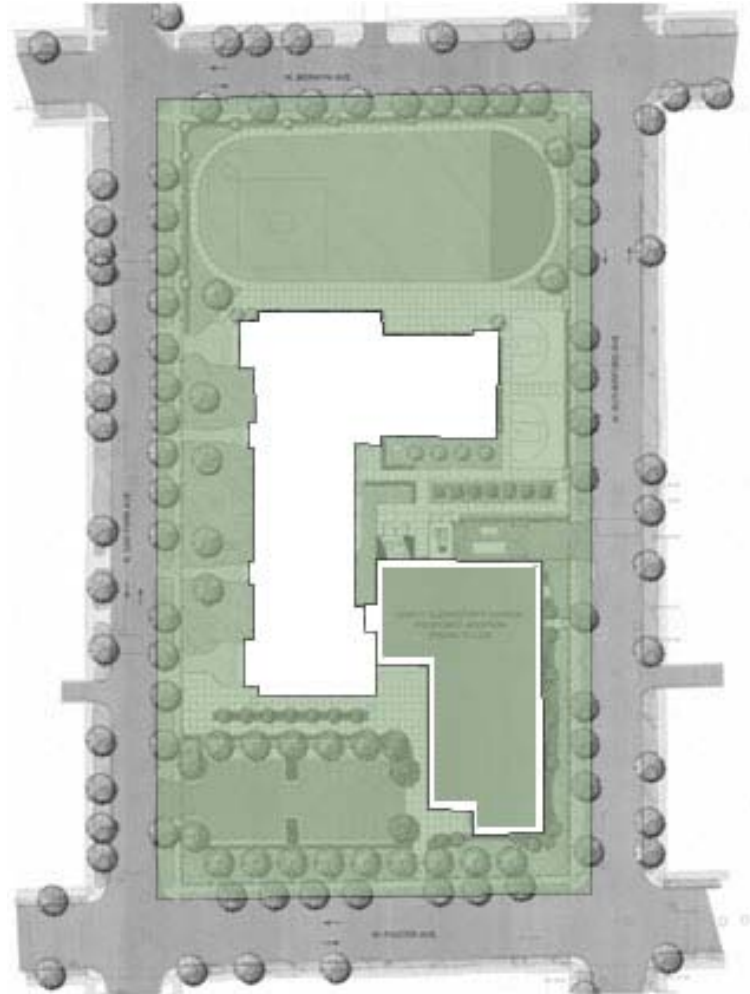


- CLASSROOM
- SCIENCE LAB
- CIRCULATION
- STORAGE
- RESTROOM
- OFFICE
- MECHANICAL

SECOND FLOOR

PUBLIC BUILDING COMMISSION OF CHICAGO

GARVY ELEMENTARY SCHOOL ADDITION



GREEN ROOF PLAN



PUBLIC BUILDING COMMISSION OF CHICAGO

GARVY ELEMENTARY SCHOOL ADDITION



WEST ELEVATION



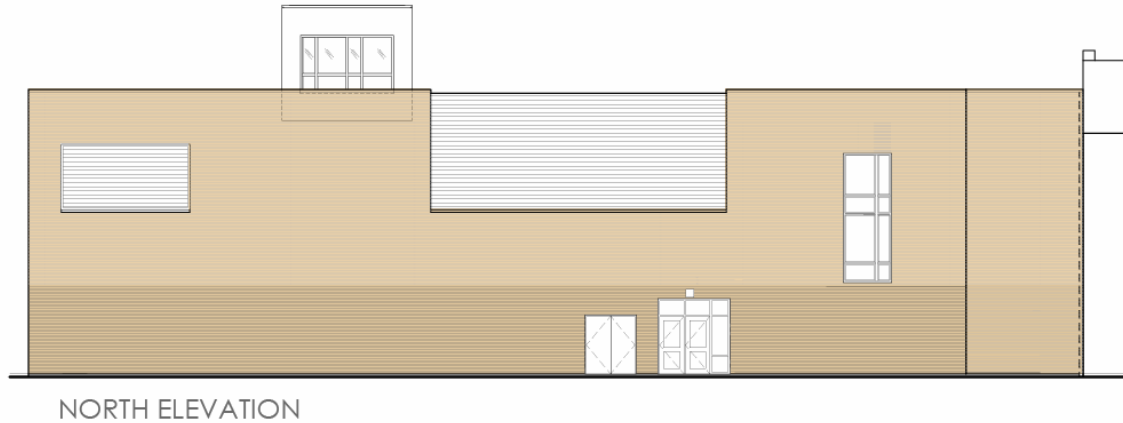
EAST ELEVATION

Garvy West and East Elevations



PUBLIC BUILDING COMMISSION OF CHICAGO

GARVY ELEMENTARY SCHOOL ADDITION



Garvy South and North Elevations



PUBLIC BUILDING COMMISSION OF CHICAGO

GARVY ELEMENTARY SCHOOL ADDITION

PROJECT DEVELOPMENT SCHEDULE:

MARCH 2009	PROJECT FORMULATION REQUEST SENT FROM CPS TO PBC
JUNE 2009	PRELIMINARY DESIGN WORK COMPLETE
APRIL 7, 2010	COMMUNITY MEETING
APRIL 2010	DESIGN COMPLETE & REQUEST TO CPS FOR AUTHORITY TO BID
3 MONTH DURATION	PROCUREMENT PROCESS & AWARD RECOMMENDATION FOR PBC BOARD APPROVAL
18 MONTH DURATION	CONSTRUCTION BY PBC & FURNITURE, FIXTURES & EQUIPMENT BY CPS



PUBLIC BUILDING COMMISSION OF CHICAGO

GARVY ELEMENTARY SCHOOL ADDITION

Commitment to Sustainable Development for the Environment

- Diversion of construction waste from landfills
- Utilization of recycled materials in construction
- Green roofs
- Enhanced natural light
- Solar-powered features
- High efficiency heating and cooling systems
- Low flow/low consumption water usage
- Responsible landscaping
- Aggressive stormwater management



PUBLIC BUILDING COMMISSION OF CHICAGO

GARVY ELEMENTARY SCHOOL ADDITION

Commitment to Economic Sustainability Programs for the Community

- Programs Include:
 - Bid incentives for the employment of apprentices
 - Bid incentives for the employment of minority and female workers
 - Contract provisions that require at least 50% of the labor force be residents of the City of Chicago.
 - Contract provisions with regard for community hiring, helping to employ those closest to the work at hand
 - Contract provisions that require minority- and women-owned business participation

PUBLIC BUILDING COMMISSION OF CHICAGO

GARVY ELEMENTARY SCHOOL ADDITION



QUESTION & ANSWER